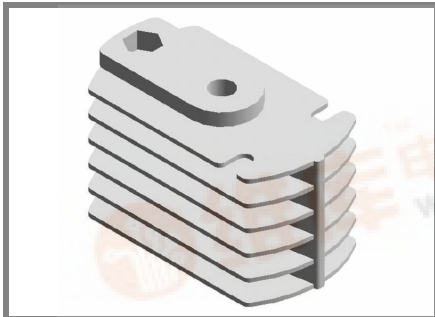


K 1,1



Heatsink

Standard lengths	n	b / d Ø mm	R _{thca} natural cooling K/W	R _{thca} (V _{air} /t) forced air cooling K/W	w kg
K 1,1 - M 16			1,1 (50W)	0,36 (140 m ³ /h)	0,7

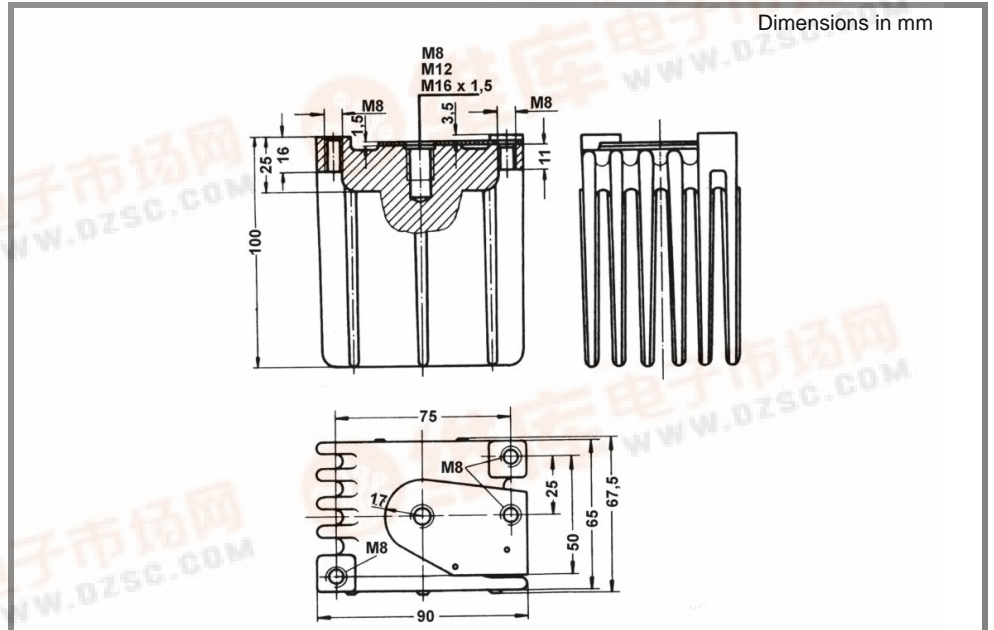
For stud devices

K 1,1

Publish Data

Features

- Intended for stud mounted devices
- Mounting points are provided for additional accessories
- DIN standard series



General profile dimensions :- K1,1 (weight = 0,7 kg)

K 1,1

