

4 SPACES (INCLUDES DASH)

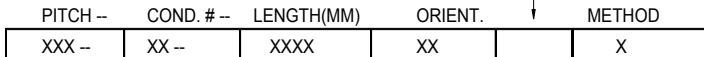
3 SPACES (INCLUDES DASH)

4 SPACES

2 SPACES

1 SPACE

1 SPACE
SEPARATING
ORIENT & METHOD



1-99

1-9999 (0000 = BULK)
NO DECIMAL
POINT (ONLY
ACCURATE
TO 1MM OR
.0394")

B-KL
SEE DETAIL

-(dash) or A
-(dash) = Standard,
A = Margin punch.
Margin punch on
.5mm pitch only (see pg 2)

050 = 0.50MM(0.0197")F=.14",B=.236",WIRE=3x11 (ONLY PITCH W/MARGIN PUNCH OPTION)

062 = 0.625MM(0.0246")F=.14",B=.236",WIRE=3x16

100 = 1.00MM(0.0394")F=.14",B=.236",WIRE=3x26

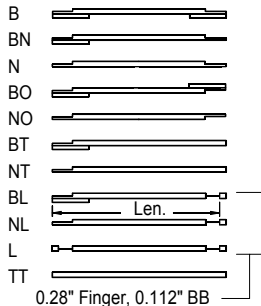
125 = 1.25MM(0.0492")F=.17",B=.294",WIRE=3x31.5

127 = 1.27MM(0.050")F=.20",B=.294",WIRE=3x26

254 = 2.54MM(0.100")F=.24",B=.394",WIRE=3x62

STANDARD INSULATION FOR THIS P/N=T1694(2x1.5)
STANDARD BACKER MAT'L FOR THIS P/N=5 MIL THICK

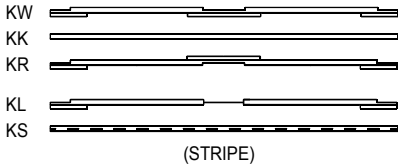
REVISIONS			
LTR	DESCRIPTION	DATE	APPRVD
---	INITIAL RELEASE	4/8/99	BLB
A	ADDED BN & L TO PG1 & KBN & KRN TO PG2	6/23/99	BLB
B	ADDED KN & KNO TO PG2	7/16/99	BLB
C	ADDED PS REFERENCE NOTE FOR .5MM PITCH CABLE	6/20/01	BLB
D	CHANGED REV TO METHOD - OR A	6/29/01	BLB
E	CHANGED FIGURE SHEET SPAN & WIDTH DIMENSIONS	4/14/03	BLB



=15 TOTAL SPACES

TOLERANCES		MATERIAL		P ARLEX CORPORATION 7 INDUSTRIAL WAY SALEM, NH 03079		
XXX ±	DR	BRYCE BUDROW	DATE	LAMINATED CABLE DIVISION		
XX ±	CHK		4/8/99	Parlex standard pin for T1694(2x1.5) 3 mil thick wire & 5 mil thick backer mat'l.		
ANGLES ±	ENG	BRYCE BUDROW	4/8/99	SIZE	FSCM	Rev.
	APPD			B	18377	PS-704
				SCALE	1:1	SHEET 1 OF 2

KW=BULK ROLL W/BACKER & FINGER
 KK=BULK ROLL
 KR=BULK ROLL W/BACKER & FINGER OS
 KL=BULK ROLL W/LAP SOLDER & FINGER W/BACKER
 KS=BULK ROLL W/STRIPE DOWN OUTER EDGE

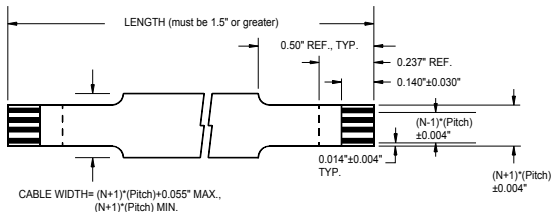


KBN BACKER EVER OTHER WINDOW (SAME SIDE)

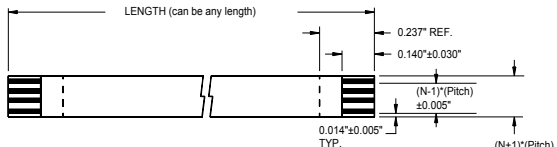
KRN BACKER EVER OTHER WINDOW (OPP. SIDE)

KN BULK W/NO BACKERS

KNO BULK W/NO BACKERS OPP SIDE



METHOD A (margin punch/available in .5mm pitch only)



METHOD -(dash) (no punch/available in all pitches)

		MATERIAL		P ARLEX CORPORATION 7 INDUSTRIAL WAY SALEM, NH 03079 LAMINATED CABLE DIVISION	
TOLERANCES		DR BRYCE BUDROW	DATE 4/8/99	Parlex standard pin for T1684(2x1.5), 3 mil thk wire & 5 mil thk backer matl.	
XXX ±		CHK			
XX ±		ENG BRYCE BUDROW	4/8/99	SIZE B	FSCM 18377
ANGLES ±		APPD		PS-704	
				SCALE 1:1	Rev. E
				SHEET 2 OF 2	