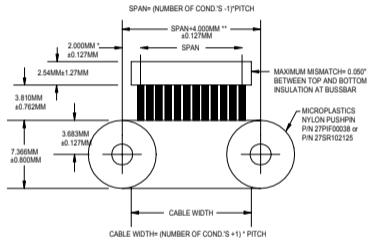


## CABLE DETAILS

CONDUCTOR TO CONDUCTOR SPACING:  
0.0394"±0.005" UNLESS SPECIFIED  
INSULATION: 0.002" THICK POLYESTER  
CONDUCTORS: 0.003" X 0.028" FLAT TINNED COPPER  
STRAIN RELIEF: 0.003" THICK POLYESTER  
RATING: AWM STYLE 20666, 105°C, VW-1

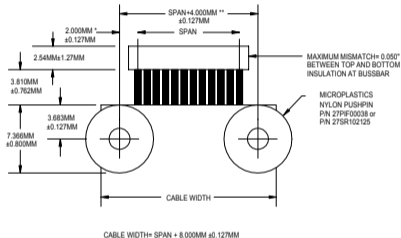
REVISIONS			
LTR	DESCRIPTION	DATE	APPROV
-	INITIAL RELEASE	6/1/98	
A	ADDED NYLON PUSHPIN DETAILS	6/3/98	
B	ADDED SPECIAL DENOTATIONS FOR 2.54MM PITCH	9/10/98	
C	CHANGED RECOMMENDED HOLE DIAM. TO 2.44MM	1/8/02	C.D.
D	CHANGED PUSHPIN DETAIL TO "NON-SLOTTED"	3/20/02	C.D.
E	CHANGED HOLE DIM. & ADDED ANOTHER PIN	5/1/03	B.B.
F	ADDED 1.27MM PITCH TO HOLE SPACING NOTES	6/4/04	B.B.

### LAMINATED STRIP STRAIN RELIEF



DIMENSIONS WITH SPECIAL DENOTATION:  
FOR 2.54MM & 1.27MM PITCH CABLES ONLY;  
DIMENSION WITH \* TO BE 4.000MM±1.27MM  
DIMENSION WITH \*\* TO BE SPAN+8.000MM±1.27MM

### WIDE MARGIN STRAIN RELIEF

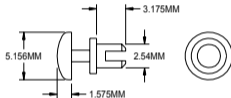


MATERIAL		<b>P</b> ARLEX CORPORATION One Parlex Place Methuen, Ma 01844  LAMINATED CABLE DIVISION								
TOLERANCES						DR	C.Dobens	DATE	6/1/98	
XXX ±	.XX ±	CHK		DESCRIPTION OF TERMINATION OF STANDARD ALS CABLE ON 1.00MM PITCH						
		ENG	C.Dobens			DATE	6/1/98			
ANGLES	±	APPD		SIZE	<b>B</b>	FSCM	<b>18377</b>	PS-592	Rev.	F
				SCALE	4:1			SHEET 1 OF	2	

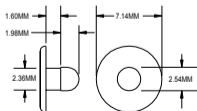
# RECOMMENDED PUSHPINS

REVISIONS			
LTR	DESCRIPTION	DATE	APPROV
-	INITIAL RELEASE	6/1/98	
A	ADDED NYLON PUSHPIN DETAILS	6/3/98	
B	ADDED SPECIAL DENOTATIONS FOR 2.54MM PITCH	9/10/98	
C	CHANGED RECOMMENDED HOLE DIAM. TO 2.44MM	1/8/02	C.D.
D	CHANGED PUSHPIN DETAIL TO "NON-SLOTTED"	3/20/02	C.D.
E	CHANGED HOLE DIM. & ADDED ANOTHER PIN	5/1/03	B.B.
F	ADDED 1.27MM PITCH TO HOLE SPACING NOTES	6/4/04	B.B.

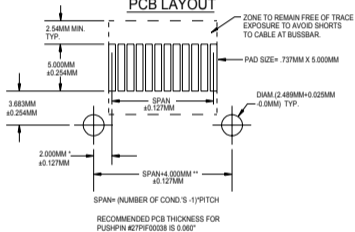
**NYLON PUSHPIN DETAILS**  
MICROPLASTICS P/N 27SR102125



**NYLON PUSHPIN DETAILS**  
MICROPLASTICS P/N 27PIF00038



**RECOMMENDED  
PCB LAYOUT**



TOLERANCES	MATERIAL		<b>P</b> ARLEX CORPORATION One Parlex Place Methuen, Ma 01844  LAMINATED CABLE DIVISION	
	DR	DATE		
	XXX ±	C.Dobens	6/1/98	DESCRIPTION OF TERMINATION OF STANDARD ALS CABLE ON 1.00MM PITCH
	XX ±	CHK		
ANGLES ±	APPD		SIZE <b>B</b> FSCM <b>18377</b>	PS-592 Rev. F
			SCALE 4:1	SHEET 2 OF 2