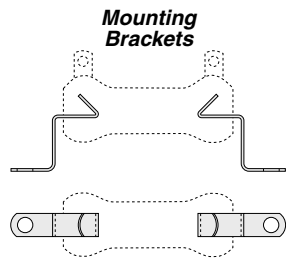
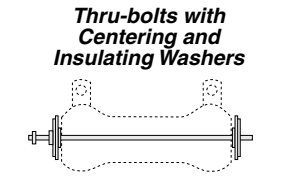


Resistor Mounting Hardware

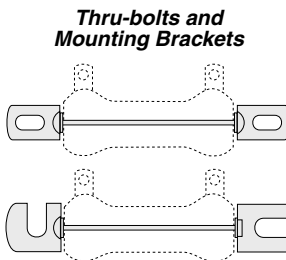
For 200, 210, and 270 Series Resistors



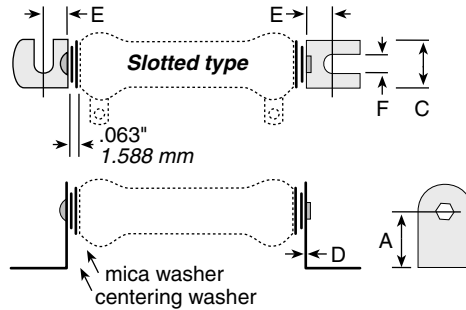
Mounting Brackets



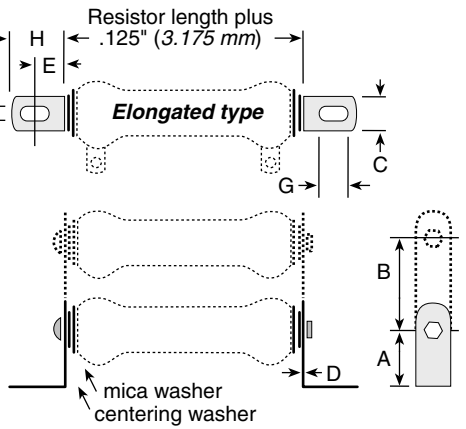
Thru-bolts with Centering and Insulating Washers



Thru-bolts and Mounting Brackets



Slotted type



Elongated type

THRU-BOLTS AND MOUNTING BRACKETS

Sturdy plated steel brackets, along with thru-bolts, centering washers and insulating washers (included), allow for secure mounting of 210 type and 270 type resistors. Mounting brackets are available in either slotted (one with end-slot/one with side-slot) or elongated styles.

Type	Dimensions							
	A	B	C	D	E	F	G	H
Slotted								
6101—	0.781"	—	0.75"	0.031"	0.438"	0.25"	—	—
6104—	0.781"	—	0.75"	0.031"	0.438"	0.25"	—	—
6110—	1"	—	1.125"	0.063"	0.813"	0.313"	—	—
Elongated								
6120—	1"	—	0.5"	0.031"	0.422"	0.219"	.438	.750
6126—	1.5"	—	1.25"	0.063"	0.438"	0.281"	.563	.875
6127—	1.5"	2"	1.25"	0.063"	0.438"	0.281"	.563	.875
6128—	1.5"	2"	1.25"	0.063"	0.438"	0.281"	.563	.875
6129—	1.5"	2"	1.25"	0.063"	0.438"	0.281"	.563	.875

Part No. Slotted	Elongated	No. of resistors per Bkt.	Resistor Size	Resistor Type
—	✓ 6120-D-1.75	1	12W	210/270
✓ 6101-2	✓ 6120-K-2	1	25W	210/270
✦ 6101-4	✓ 6120-K-4	1	50W	210/270
✓ 6101-6	—	1	75W	210
✦ 6104-6.5	—	1	100W	210/270
✦ 6110-8.5	✦ 6126-P-8.5	1	175W	210/270
—	✦ 6127-P-8.5	2	175W	210/270
—	✦ 6128-P-8.5	3	175W	210/270
—	✓ 6129-P-8.5	4	175W	210/270
✓ 6110-10.5	—	1	225W	210/270

- ✦ = Most popular Standard values
- ✓ = Standard values
- ✦ = Non-Standard values subject to minimum handling charge per item

MOUNTING BRACKETS

Brackets fit inside cores of 200, 210 and 270 type resistors and remain in place by spring tension. Standard brackets are plated steel and have no suffix to part number. Spring steel brackets are indicated with an "S" suffix following part number.

Part number	Spring steel	Mtg screw size (max.)	For resistors (power ratings)
✦ 5	✦ 5S	6	8, 12 watt
✓ 7	✦ 7S	6	20 watt
✦ 9	✦ 9S	6	25, 50, 75 watt
✦ 12	✦ 12S	10	100 watt
✦ 18	✦ 18S	10	175, 225 watt

THRU BOLTS

Thru-Bolts, with centering mica insulating washers, permit perpendicular mounting of 200, 210 and 270 type resistors to panels up to 0.25" thick.

Part No.	Bolt size Length	No.	For resistors (power rating)
✦ 7PA5	1.75"	8	8 watt
✦ 7PA10	2.5"	8	12 watt
✦ 7PA20	2.75"	8	20 watt
✦ 7PA25	2.75"	10	25 watt
✦ 7PA50	4.75"	10	50 watt
✦ 7PA75	6.75"	10	75 watt
✦ 7PA100	7.313"	10	100 watt
✦ 7PA160	9.5"	0.25"	175 watt
✦ 7PA200	11.5"	0.25"	225 watt

WASHERS

Metal Centering

Part No. *	Diameter Outer	Diameter Inner	For max. screw size	For resistors (power ratings)
✦ 6000	0.563"	0.190	#10	25, 50, 75 watt
✦ 6001	0.75"	0.190	#10	100 watt
✦ 6003	1.125"	0.250	0.25"	175, 225 watt

Mica insulating

Part No. *	Diameter Outer	Diameter Inner	For resistors (power ratings)
✦ 6010	0.75"	0.063"	25, 50, 75 watt
✦ 6011†	0.75"	0.313"	25, 50, 75 watt
✦ 6012	1"	0.063"	100 watt
✓ 6013†	1"	0.5"	100 watt
✦ 6014	1.25"	0.063"	core 1" O.D. x 0.625" I.D.
✦ 6015†	1.25"	0.625"	core 1" O.D. x 0.625" I.D.
✓ 6016	1.5"	0.063"	175, 225 watt
✦ 6017†	1.5"	0.75"	175, 225 watt

† Use with centering washers.

ADJUSTABLE LUGS FOR 210 SERIES

One standard screwdriver type adjustable lug is supplied with each unit.

Two types of lugs can be ordered separately: standard or with a silver contact button; both types are available with a screwdriver type lug.

Resistor core diam. (in. / mm)	Standard part numbers	
	Standard	Silver
0.313 / 7.94	✦ 2115	✦ 2116
0.563 / 14.3	✦ 2121	✓ 2123
0.750 / 19.05	✦ 2125	✦ 2127
1.125 / 28.58	✓ 2133	✦ 2135

Double thumb screw Lug

(Part Number 2160) The double thumb screw adjustable lug permits easier adjustment and less chance of damage to resistance wire. Available for 1.125" cores only.

Resistor Mounting Hardware

For 210 Type And 270 Type Resistors

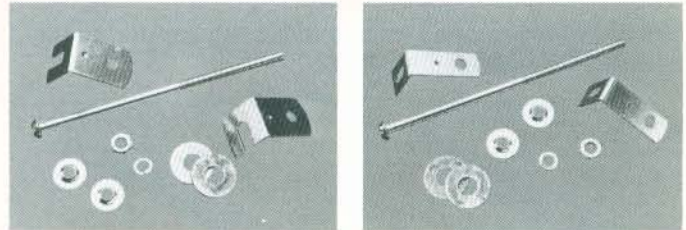
• Mounting Brackets

Brackets fit inside cores of 210 Type and 270 Type Resistors and remain in place by spring tension. Standard brackets are plated steel and have no suffix to part number. Spring steel brackets are indicated with an "S" suffix following part number.



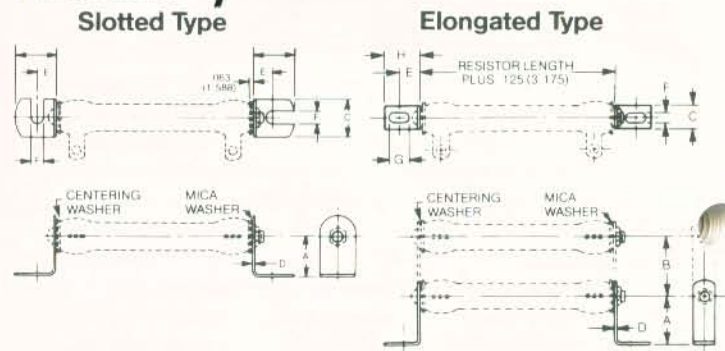
• Thru-Bolts and Mounting Brackets

Sturdy plated steel brackets, along with thru-bolts, centering washers and insulating washers (included), allow for secure mounting of 210 Type and 270 Type Resistors. Mounting brackets are available in either slotted (one with end-slot/one with side-slot) or elongated styles.



Part No.		Mtg. Screw Size (Max.)	For Resistors (Power Ratings)
Std.	Spring Steel		
5	5S	6	12 Watt
9	9S	6	25; 50; 75 Watt
12	12S	10	100 Watt
18	18S	10	175; 225 Watt

• Dimensions



• Thru-Bolts

Thru-Bolts, with centering and Mica Insulating Washers, permit perpendicular mounting of 210 Type and 270 Type Resistors to panels up to 1/4" thick.

Part No.	Bolt Size		For Resistors (Power Ratings)
	Length	No.	
7PA10	2 1/2 in.	8	12 Watt
7PA25	2 3/4 in.	10	25 Watt
7PA50	4 3/4 in.	10	50 Watt
7PA75	6 3/4 in.	10	75 Watt
7PA100	7 5/16 in.	10	100 Watt
7PA160	9 1/2 in.	1/4"	175 Watt
7PA200	11 1/2 in.	1/4"	225 Watt

Type	Dimensions						
	Slotted	A	B	C	D	E	F
6101-	2 5/32	—	3/4	1/32	7/16	1/4	1/4
6104-	2 5/32	—	3/4	1/32	7/16	1/4	1/4
6110-	1	—	1 1/8	1/16	13/16	5/16	5/16
Elongated	A	B	C	D	E	F	
6120-	1	—	1/2	1/32	2 7/64	7/32	7/32
6126-	1 1/2	—	1 1/4	1/16	7/16	9/32	9/32
6127-	1 1/2	2	1 1/4	1/16	7/16	9/32	9/32
6128-	1 1/2	2	1 1/4	1/16	7/16	9/32	9/32
6129-	1 1/2	2	1 1/4	1/16	7/16	9/32	9/32

• Washers Only

Metal Centering

Part No.	Diameter (in.)		For Max. Screw Size	For Resistors (Power Ratings)
	Outer	Inner		
6000	9/16	.190	#10	25; 50; 75 Watt
6001	3/4	.190	#10	100 Watt
6003	1 1/8	.250	1/4"	175; 225 Watt

Mica Insulating

Part No.	Diameter (in.)		For Resistors (Power Ratings)
	Outer	Inner	
6010	3/4	3/16	25; 50; 75 Watt
6011*	3/4	5/16	25; 50; 75 Watt
6012	1	3/16	100 Watt
6013*	1	1/2	100 Watt
(6014)	1 1/4	3/16	Core 1" O.D. x 5/8" I.D.
6015*	1 1/4	5/8	Core 1" O.D. x 5/8" I.D.
6016	1 1/2	3/16	175; 225 Watt
6017*	1 1/2	3/4	175; 225 Watt

*Use with centering washers

Part No.		Number of Resistors Per BKT Assm.	Resistor Size	Resistor Type
Slotted	Elongated			
—	6120-D-1 3/4	1	12W	210/270
6101-2	6120-K-2	1	25W	210/270
6101-4	6120-K-4	1	50W	210/270
6101-6	—	1	75W	210
6104-6 1/2	—	1	100W	210/270
6110-8 1/2	6126-P-8 1/2	1	175W	210/270
—	6127-P-8 1/2	2	175W	210/270
—	6128-P-8 1/2	3	175W	210/270
—	6129-P-8 1/2	4	175W	210/270
6110-10 1/2	—	1	225W	210/270