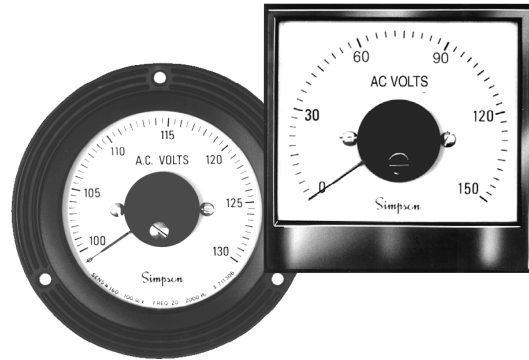




250° Long Scale Style

- More Than Double the Standard Scale Length
- Zero Adjust from Front Panel
- Two Popular Sizes: 3-1/2", 4-1/2"
- Round or Rectangular Case Styles
- 63% of Full Scale Accuracy



Model Number	Size	Meter Movement
2543	3-1/2"	Rectifier
2143L	3-1/2"	Rectifier
2544	4-1/2"	Rectifier

Look to the 250° Long Scale analog meters for a full 250° readability that provides more than double the scale length of the standard 90° or 100° movements. Simpson's 250° panel meters are designed for applications that require high-resolution readings - all in a compact and attractive design. They are rectifier type, self-shielded, moving coil instruments with non-magnetic pivots and spring-backed jewels.

The movement construction allows the meter to be mounted on steel panels. These easy-to-read meters are

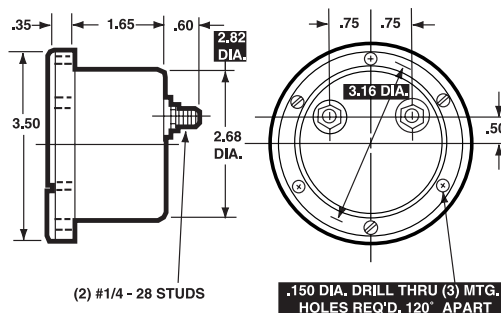
available in either sealed round metal or in molded rectangular phenolic cases with glass windows. The zero adjust is conveniently located on the external front portion of the meter.

Two different standard sizes of 3-1/2" and 4-1/2" are available in selected voltage ranges. This style meter is ideal for other electrical functions. See "Function Reference Table."

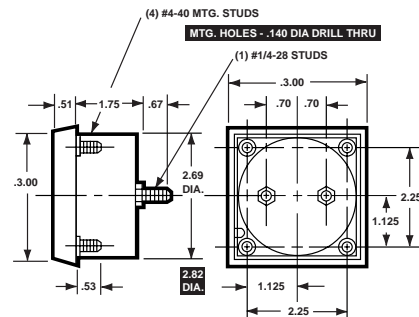
Dimensions and Compatibility

3-1/2"-Model 2543

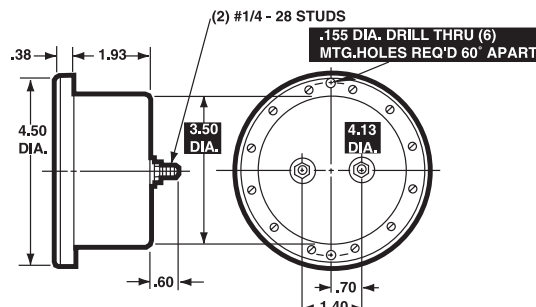
1 = Panel Meter Cut-out Dimensions



4-1/2"-Model 2143L



4-1/2" Model 2544



Specifications

Accuracy:	±3% full scale (F.S.)	Resistance:	±15%
Movement:	Rectifier type, self-shielding	Case:	Models 2543 & 2544: Metal
Suspension:	Pivot and Jewel		Model 2143L: Black phenolic
Tracking:	3%		
Shielding:	Calibration is unaffected by magnetic panel mounting.	Operating Temperature:	-4°F to +149°F (-20°C to +65°C)
Response Time:	1.5 seconds maximum	Pointer:	Red, knife-edge
Overload (1 sec.):	10 times F.S.	Scale Length:	Model 2543 & 2143L: 4.77" (121.16mm)
Overload (Continuous):	1.5 times F.S.		Model 2544: 6.54" (166.0mm)
Repeatability:	2%		
Dial:	Sharp clear scale. Each dial arc is calibrated to track the specific type of movement used.	Net Weight:	Model 2543 & 2143L: 8oz (230g)
			Model 2544: 9oz (260g)

Ordering Information

AC Voltmeters Rectifier Type, Self-Shielding

Range	Approx. Impedance (Ohms) @ 60Hz	Model/Size and Catalog Number		
		3-1/2" Model 2543	3-1/2" Model 2143L	4-1/2" Model 2544
0-10	2000Ω/V	17990	< >	17995
0-30		< >	17915	< >
0-150		17978	17916	17988
0-300		17979	19717	17989

< > Available on special order.

Function Reference Table

For your convenience, the table below lists Long Scale models for other electrical monitoring functions with page number reference.

Function	Section	Page
AC Current	E	25
DC Current	E	65
DC Voltage	E	85

Engineer's Notes

[illegible]