

Embedded Power for Business-Critical Continuity

DS850-9

850 Watts 48V

Distributed Power System

Distributed Power Bulk Front-End
Total Output Power: 850 Watts
+3.3vdc Stand-by Output
Wide Range Input voltage: 90 - 264VAC



Rev. 02.01.06
DS850-9
1 of 4

Special Features

- Active Power Factor Correction
- EN61000-3-2 Harmonic Compliance
- Active AC Inrush Control
- 1U X 2U Form Factor
- 15.4W/ in³
- +48Vdc Output
- +3.3vdc Stand-By (5V standby - consult factory)
- No Minimum Load Required
- Hot Plug Operation
- N + 1 Redundant
- Internal OR'ing Fets
- Active Current Sharing (10 - 100% load)
- Built-in Cooling Fans (40mm x 28mm)
- I²C Communication Interface Bus
- EERPOM for FRU Data
- Red/Green Bi-Color LED Status
- Internal Fan Speed Control
- Fan Fail Tach Output Signal
- INTEL, SSI Std. Logic Timing
- INTEL, SSI Std. FRU Data Format
- One Year Warranty

Safety

UL/cUL 60950 (UL Recognized)
NEMKO+ CB Report EN60950



Electrical Specifications

Input	
Input range	90-264 VAC (wide range)
Frequency	47-63 Hz, single phase AC
Inrush current	55A maximum inrush current
Efficiency	>82% typical at full load, high line
Conducted EMI	FCC Subpart J EN55022 Class B
Radiated EMI	FCC Subpart J EN55022 Class B
Power factor	0.99 typical
Leakage current	1.40mA @ 240VAC
Hold up time	20ms minimum
Output	
Main DC voltage	+48V @ 17.5A
Stand-By	+3.3vsb @ 6A (5V @ 4vsb available)
Adjustment range	Factory Set, no pot adjustments
Regulation	+48Vdc; +5%/-5% +3.3vsb; +5%/-5%
Over current	+48Vdc; 19.2A - 26.3A latches off if overcurrent lasts over 1 second, otherwise it is auto recovery. +3.3vsb, 9A max (hiccup mode)
Over voltage	+48Vdc; 52.8 - 57.6vdc +3.3vsb; 3.76 - 4.30vdc
Under voltage	+48Vdc; 36 - 43.2V (latch off)
Turn-on delay	2 Second max, 20 - 200mS, Monotonic Rise
+48VOutput Rise Time	20 - 200mS, Monotonic Rise



Logic Control

PS_SEATED	TTL logic LOW if power supply is seated into system connector. This is a short pin. A logic HIGH if the PSU is removed.
PWR GOOD	Active TTL HiGH when output is within regulation limits.
AC OK	A LOW logic level if the input voltage is within allowable limits. A TTL logic HIGH level, and a 5mS early warning signal before 48.0v DC output loss of regulation.
Temp OK	A TTL logic HIGH, when operating within allowable temperature range.
PS_INHIBIT/PS_KILL	This signal is connected to a short pin on the PSU When left open power supply operation will be inhibited. When the power supply is inserted into the system, this pin will be pull low by the system and turn the power supply on only after all other power supply pins have seated.

Environmental Specifications

Operating temperature:	-10° to 50°C ; 50% power derating at 70°C
Storage temperature:	-40°C to +85°C
Altitude, operating	10,000ft.
Electromagnetic susceptibility / Input transients:	-EN61000-3-2, -3-3 -EN61000-4-2, 4.3, 4-4, -4-5, 4-11 Level -EN55024:1998
RoHS & lead-free compliant (no tantalum caps.)	
Humidity:	20 to 90% RH, non-condensing
Shock and vibration specifications	complies with Astec Std. Specifications, Q3205
MTBF (Demonstrated)	500K Hrs at full load, 40°C

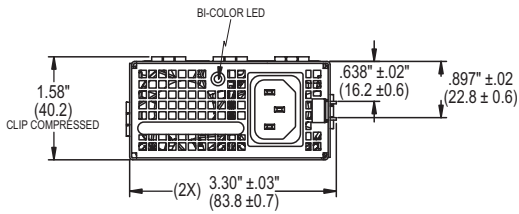
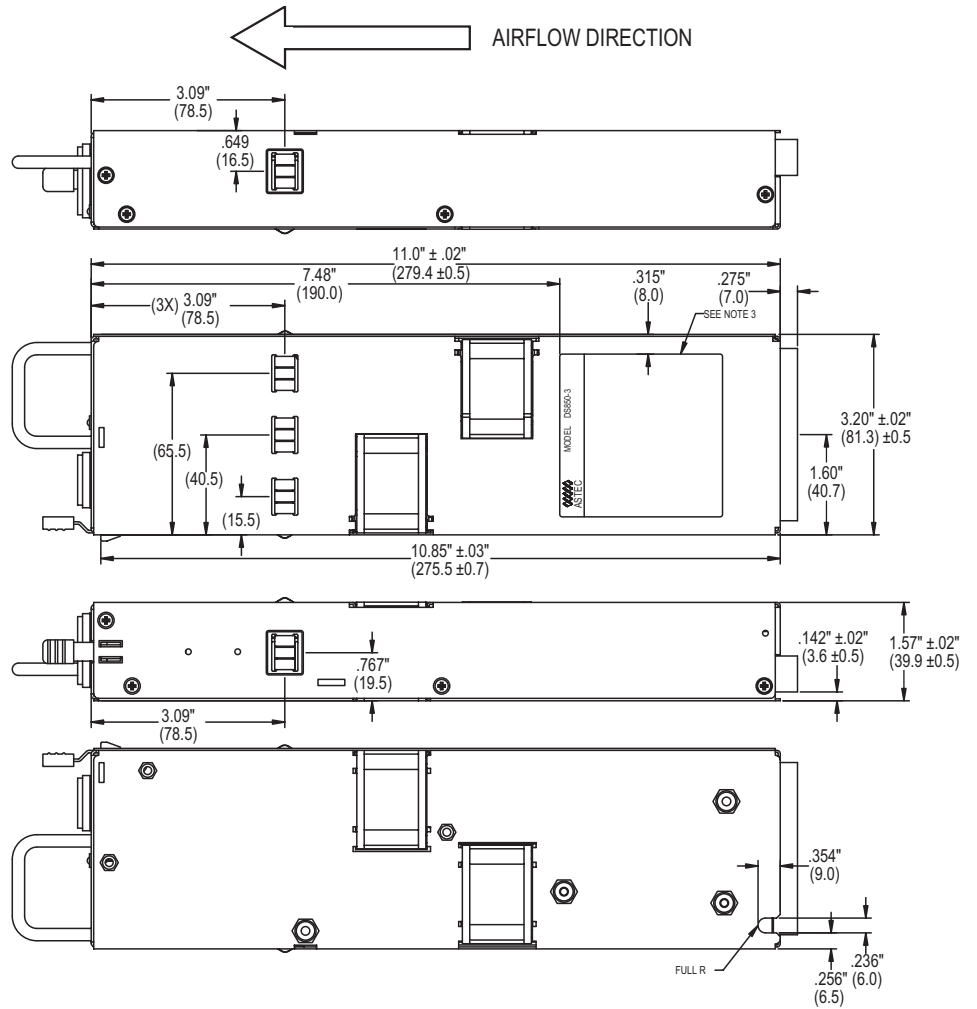
Ordering Information

Output	Nominal Output Voltage Set Point	Set Point Tolerance	Total Regulation	Minimum Current	Maximum Current	Output Ripple P/P
DS850-9	48.0vdc 3.3vsb*	±0.2% ±1%	±5% ±5%	0A 0A	17.5A 6.0A	480mV 50mV

* For 5vsb, consult marketing.

Mechanical Drawing

Condition	LED Status
+3V3SB-ON; +48VOUT-OFF; AC PRESENT	Blinking Green
+3V3SB-ON; +48VOUT-ON	Solid Green
+48V_OCP, +48V_UVP, +120VP	Blinking Red
FAN_FAULT, OTP, 3V3 OCP/UVP	Solid Red



DC Output Connector Pinout Assignment

Male connector as viewed from the rear of the supply:

D1	D2	D3	D4	D5	D6						
C1	C2	C3	C4	C5	C6	PB1	PB2	PB3	PB4	PB5	PB6
B1	B2	B3	B4	B5	B6						
A1	A2	A3	A4	A5	A6						

P1 - Power Supply Side

1. FCI Power Blade 51721 series
51721-10002406AA

2. Molex Power Connector
SD-87667 series
87667-7002

Mating Connector (System side)

1. FCI Power Blade
51741-10002406CC
Strait Pins

2. FCI Power Blade
51761-10002406AA
Right Angle

Pin	Signal Name
PB 1	+48V RETURN
PB 2	+48V RETURN
PB 3	+48V RETURN
PB 4	+48V
PB 5	+48V
PB 6	+48V
A1	PS_ON
A2	+48V RMT SENSE RETURN
A3	TEMP_OK
A4	PS_SEATED (Power Supply Seated)
A5	+3V3 STAND-BY
A6	+3V3SB RETURN
B1	AC_OK (AC Input Present)
B2	+48V RMT SENSE
B3	+48V CURRENT SHARE
B4	PS_INHIBIT
B5	+3V3 STAND-BY
B6	+3V3SB RETURN
C1	SDA (I2C Data Signal)
C2	SCL (I2C Clock Signal)
C3	POWER GOOD
C4	FAN FAIL (Fan Fail Signal)
C5	+3V3 STAND-BY
C6	+3V3SB RETURN
D1	A0 (I2C Address BIT 0 Signal)
D2	A1 (I2C Address BIT 1 Signal)
D3	S_INT (Alarm)
D4	+3V3 STAND-BY RMT SENSE
D5	+3V3 STAND-BY
D6	+3V3SB RETURN

Astec Power

5810 Van Allen Way
Carlsbad, CA 92008
USA
Telephone: +1 760 930 4600
Facsimile: +1 760 930 0698
Technical Support: +1 888 41 ASTEC
or +1 407 241 2752

Waterfront Business Park
Merry Hill, Dudley
West Midlands, DY5 1LX
United Kingdom
Telephone: +44 (0) 1384 842 211
Facsimile: +44 (0) 1384 843 355

Units 2111-2116, Level 21
Tower 1, Metroplaza
223, Hing Fong Road
Kwai Fong, New Territories
Hong Kong
Telephone: +852 2437 9662
Facsimile: +852 2402 4426

For global contact, visit:

www.astecpower.com
technicalsupport@astec.com

While every precaution has been taken to ensure accuracy and completeness in this literature, Astec Power assumes no responsibility, and disclaims all liability for damages resulting from use of this information or for any errors or omissions.

Printed in USA

Emerson Network Power.

The global leader in enabling
business-critical continuity.

- AC Power
- Connectivity
- DC Power
- **Embedded Power**
- Inbound Power
- Integrated Cabinet Solutions
- Outside Plant
- Precision Cooling
- Site Monitoring and Services

EmersonNetworkPower.com