

Dual High Speed $\pm 75V$ 2.5A Ultrasound Pulser

Features

- ▶ HVCMOS technology for high performance
- ▶ High density integration ultrasound transmitter
- ▶ 0 to $\pm 75V$ output voltage
- ▶ $\pm 2.5A$ source and sink current in PW mode
- ▶ $\pm 800mA$ source and sink current in CW mode
- ▶ Up to 20MHz operation frequency
- ▶ Matched delay times
- ▶ 1.2V to 5.0V CMOS logic interface
- ▶ Over temperature sensing
- ▶ Under voltage protections
- ▶ Built-in output drain bleed resistors

Applications

- ▶ Portable medical ultrasound imaging
- ▶ Piezoelectric transducer drivers
- ▶ NDT ultrasound equipment
- ▶ Pulse waveform generator

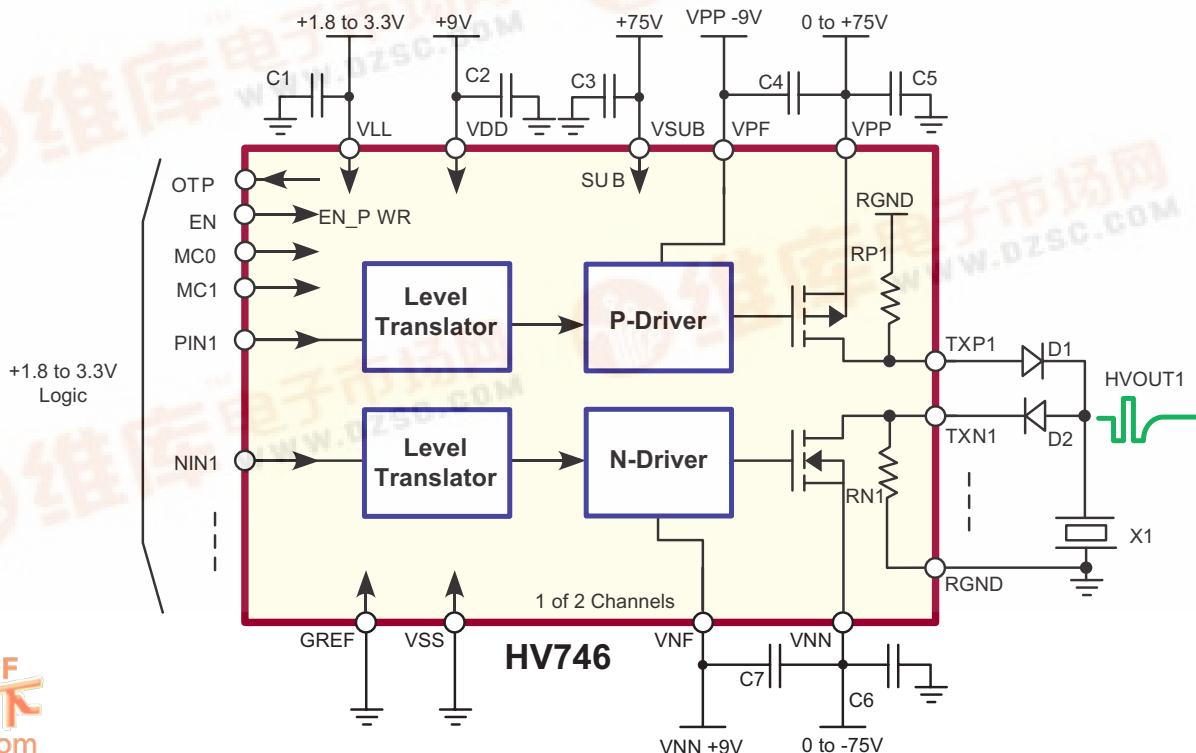
General Description

The Supertex HV746 is a dual-channel monolithic high voltage high-speed pulse generator. It is designed for portable medical ultrasound applications. This high voltage and high-speed integrated circuit can also be used for other piezoelectric, capacitive or MEMS sensor in ultrasonic nondestructive detection and sonar ranger applications.

The HV746 consists of controller logic interface circuit, level translators, MOSFET gate drives and high current power P-channel and N-channel MOSFETs as the output stage for each channel. A 2-bit mode control is provided that allows the maximum output current to be reduced for power saving.

The output stages of each channel are designed to provide peak output currents over $\pm 3.6A$ for pulsing, when in mode 4, with up to $\pm 75V$ swings. When in mode 1, all the output stages drop the peak current to $\pm 800mA$ for low-voltage CW mode operation to save power consumption of the IC. The P and N type of power FETs gate drivers are supplied by two floating 9.0VDC power supplies reference to V_{PP} and V_{NN} . This direct coupling topology of the gate drivers not only saves two high voltage capacitors per channel, but also makes the PCB layout easier.

Typical Application Circuit



Ordering Information

Device	Package Options
	48-Lead QFN 7x7mm body, 1.0mm height (max), 0.5mm pitch
HV746	HV746K6-G

-G indicates package is RoHS compliant ("Green")

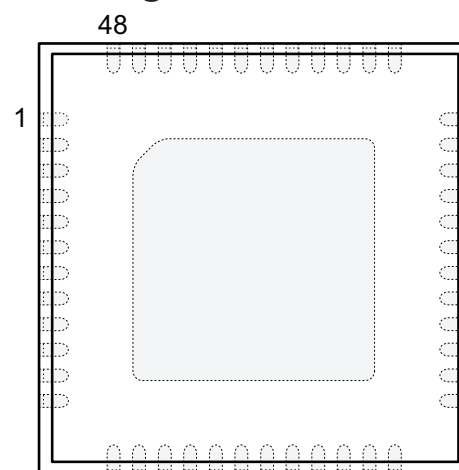


Absolute Maximum Ratings

Parameter	Value
V_{SS} , Power supply reference	0V
V_{LL} , Positive logic supply	-0.5V to +7V
V_{DD} , Positive logic and level translator supply	-0.5V to +14V
$(V_{PP} - V_{PF})$ Positive floating gate drive supply	-0.5V to +14V
$(V_{NF} - V_{NN})$ Negative gate floating drive supply	-0.5V to +14V
$(V_{PP} - V_{NN})$ Differential high voltage supply	+180V
V_{PP} , High voltage positive supply	-0.5V to +95V
V_{NN} , High voltage negative supply	+0.5V to -95V
All logic input PIN, NIN and EN pin voltages	-0.5V to +7.0V
OTP, over temperature protection output	-0.5V to +7.0V
$(V_{SUB} - V_{SS})$ Substrate to V_{SS} voltage difference	+180V
$(V_{PP} - TXP_X)$ V_{PP} to TXP_X voltage difference	+180V
$(V_{SUB} - TXP_X)$ Substrate to TXP_X voltage difference	+180V
$(TXN_X - V_{NN})$ TXN_X to V_{NN} voltage difference	+180V
dV_{PP}/dt , HV positive supply maximum slew rate	25V/ μ s
dV_{NN}/dt , HV negative supply maximum slew rate	25V/ μ s
Storage temperature	-65°C to 150°C
Thermal resistance, θ_{JA} (4-layer, 1oz, 4x3in. 9-via PCB)	29°C/W
Thermal resistance, θ_{JC}	0.5°C/W

Absolute Maximum Ratings are those values beyond which damage to the device may occur. Functional operation under these conditions is not implied. Continuous operation of the device at the absolute rating level may affect device reliability. All voltages are referenced to device ground.

Pin Configuration



48-Lead QFN (K6)
(Top View)

Package Marking

• HV746K6
LLLLLLLLL
YYWW
AAA CCC

L = Lot Number
YY = Year Sealed
WW = Week Sealed
A = Assembler ID
C = Country of Origin
— = "Green" Packaging

48-Lead QFN (K6)

Power-Up Sequence

1	V_{SUB}
2	V_{LL} with logic signal low
3	V_{DD}
4	$(V_{PP} - V_{PF})$ and $(V_{NF} - V_{NN})$
5	V_{PP} and V_{NN}
6	Logic control signals go to hi

Power-Down Sequence

1	Logic control signals go to low
2	V_{PP} and V_{NN}
3	$(V_{PP} - V_{PF})$ and $(V_{NF} - V_{NN})$
4	V_{DD}
5	V_{LL}
6	V_{SUB}

Operating Supply Voltages and Current (2 Channel Active)

(Operating conditions, unless otherwise specified, $V_{SS} = 0V$, $V_{LL} = +3.3V$, $V_{DD} = +9.0V$, $V_{PP} - V_{PF} = +9.0V$, $V_{NN} - V_{NF} = -9.0V$, $V_{PP} = +75V$, $V_{NN} = -75V$, $T_A = 25^\circ C$)

Sym	Parameter	Min	Typ	Max	Units	Conditions
V_{LL}	Logic voltage reference	1.2	1.8 to 3.3	5.0	V	---
V_{DD}	Internal voltage supply	8.0	9.0	12	V	---
V_{PF}	P-FET gate driver supply	$(V_{PP} - 12)$	$(V_{PP} - 9.0)$	$(V_{PP} - 8.0)$	V	Floating driver voltage supplies.
V_{NF}	N-FET gate drive supply	$(V_{NN} + 8.0)$	$(V_{NN} + 9.0)$	$(V_{NN} + 12)$	V	
V_{SUB}	IC substrate voltage	V_{DD}	V_{PP}	+75	V	Must connect to the most positive potential of the IC.
V_{PP}	Positive HV supply	0	-	+75	V	---
V_{NN}	Negative HV supply	-75	-	0	V	---
SR_{MAX}	Slew rate limit of V_{PP} , V_{NN}	-	-	25	V/ms	Built-in slew rate detection protection.
I_{LL}	V_{LL} Current EN = Low	-	35	120	μA	---
I_{DDQ}	V_{DD} Current EN = Low	-	15	-	μA	---
I_{DDEN}	V_{DD} Current EN = High	-	0.75	2.0	mA	f = 0MHz
I_{DDEN}	V_{DD} Current MODE = 4	-	0.75	-		f = 5.0MHz, continuous, no loads
I_{DDENCW}	V_{DD} Current MODE = 1	-	2.0	-		
I_{PPQ}	V_{PP} Current EN = Low	-	10	25	μA	---
I_{PPEN}	V_{PP} Current MODE = 4	-	250	-	mA	f = 5.0MHz, continuous, no loads
I_{PPENCW}	V_{PP} Current MODE = 1	-	170	-		
I_{NNQ}	V_{NN} Current EN = Low	-	15	30	μA	---
I_{NNEN}	V_{NN} Current MODE = 4	-	250	-	mA	f = 5.0MHz, continuous, no loads
I_{NNENCW}	V_{NN} Current MODE = 1	-	170	-		
I_{PFQ}	V_{PF} Current EN = Low	-	10	25	μA	---
I_{PFEN}	V_{PF} Current MODE = 4	-	50	-	mA	f = 5.0MHz, continuous, no loads
I_{PFENCW}	V_{PF} Current MODE = 1	-	12	-		
I_{NFQ}	V_{NF} Current EN = Low	-	20	30	μA	---
I_{NFEN}	V_{NF} Current MODE = 4	-	25	-	mA	f = 5.0MHz, continuous, no loads
I_{NFENCW}	V_{NF} Current MODE = 1	-	12	-		

Under Voltage and Over Temperature Protection

Sym	Parameter	Min	Typ	Max	Units	Conditions
V_{PULL_UP}	Open drain pull-up voltage	-	-	5.0	V	---
V_{UVDD}	V_{DD} threshold	4.5	-	6.0	V	---
V_{UVLL}	V_{LL} threshold	0.8	0.9	1.0	V	---
V_{UVVF}	V_{PP} , V_{NF} threshold	4.5	-	6.0	V	---
V_{OL_OTP}	OTP flag output low voltage	-	-	1.0	V	$V_{LL} = 3.3V$, OTP = Active, $I_{PULL-UP} = 1.0mA$
I_{OTP}	Max. open drain output current	-	1.0	-	mA	$V_{LL} = 3.3V$, OTP = Active, $I_{PULL-UP} = 1.0mA$
T_{OTP}	Over temperature threshold	95	110	125	$^\circ C$	If over temperature occurs, OTP low and all TX outputs will be HiZ.
T_{HYS}	OTP output reset hysteresis	-	7.0	-	$^\circ C$	

DC Electrical Characteristics

(Operating conditions, unless otherwise specified, $V_{SS} = 0V$, $V_{LL} = +3.3V$, $V_{DD} = +9.0V$, $V_{PP} - V_{PF} = +9.0V$, $V_{NN} - V_{NF} = -9.0V$, $V_{PP} = +75V$, $V_{NN} = -75V$, $T_A = 25^\circ C$)

Output P-Channel MOSFET, TXP (Mode 4)

Sym	Parameter	Min	Typ	Max	Units	Conditions
I_{OUT}	Output saturation current	2.5	3.6	-	A	---
R_{ON}	Channel resistance	-	4.0	-	Ω	$I_{SD} = 100mA$
C_{OSS}	Output capacitance	-	200	-	pF	$V_{DS} = 25V$, $f = 1.0MHz$

Output N-Channel MOSFET, TXN (Mode 4)

Sym	Parameter	Min	Typ	Max	Units	Conditions
I_{OUT}	Output saturation current	2.5	3.6	-	A	---
R_{ON}	Channel resistance	-	3.75	-	Ω	$I_{SD} = 100mA$
C_{OSS}	Output capacitance	-	80	-	pF	$V_{DS} = 25V$, $f = 1.0MHz$

MOSFET Drain Bleed Resistor

Sym	Parameter	Min	Typ	Max	Units	Conditions
$R_{P/N1-4}$	Output bleed resistance	5.0	7.5	10	k Ω	---
P_{RO}	Bleed resistors power limit	-	-	80	mW	---

Logic Inputs

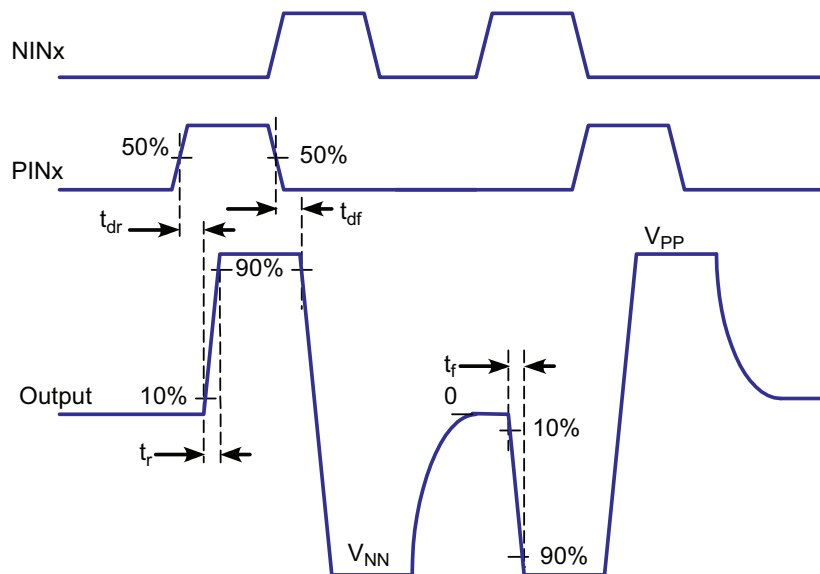
Sym	Parameter	Min	Typ	Max	Units	Conditions
V_{IH}	Input logic high voltage	$(V_{LL} - 0.4)$	-	V_{LL}	V	---
V_{IL}	Input logic low voltage	0	-	0.4	V	---
I_{IH}	Input logic high current	-	-	10	μA	---
I_{IL}	Input logic low current	-10	-	-	μA	---
C_{IN}	Input logic capacitance	-	-	10	pF	---

AC Electrical Characteristics

(Operating conditions, unless otherwise specified, $V_{SS} = 0V$, $V_{LL} = +3.3V$, $V_{DD} = +9.0V$, $V_{PP} - V_{PF} = +9.0V$, $V_{NN} - V_{NF} = -9.0V$, $V_{PP} = +75V$, $V_{NN} = -75V$, $T_A = 25^\circ C$)

Sym	Parameter	Min	Typ	Max	Units	Conditions
t_r	Output rise time	-	18	-	ns	330pF//2.5k Ω load
t_f	Output fall time	-	18	-	ns	
f_{OUT}	Output frequency range	-	-	20	MHz	100 Ω resistor load
HD2	Second harmonic distortion	-	-28	-	dB	
t_{EN}	Enable time	-	180	500	μs	
t_{DIS}	Disable time	-	2.8	10	μs	
t_{dr}	Delay time on inputs rise	-	22	-	ns	
t_{df}	Delay time on inputs fall	-	22	-	ns	
t_{dm}	Delay on mode change	-	2.5	10	ns	
Δt_{delay}	$ t_{dr} - t_{df} $ delay time matching	-	± 2.0	-	ns	
t_j	Delay jitter on rise or fall	-	15	-	ns	$V_{PP}/V_{NN} = +/-25V$, input t_r 50% to HV _{OUT} t_r or t_f 50%, with 330pF//2.5k Ω load

Switching Time Diagram



Drive Mode Control Table

Mode	MC1	MC0	I_{SC} (A)	$R_{ON P}$ (Ω)	$R_{ON N}$ (Ω)
1	0	0	0.82	18	17
2	0	1	1.16	13	12
3	1	0	1.94	7.5	7.0
4	1	1	3.6	4.0	3.8

Note:

- $V_{PP}/V_{NN} = \pm 75V$, $V_{DD} = (V_{PP} - V_{PP}) = (V_{NF} - V_{NN}) = +9.0V$
- I_{SC} is current into 1.0Ω to GND
- R_{on} calculated from V_{OUT} into 100Ω load

Truth Table (Mode = X)

Logic Inputs			Output	
EN	PIN_x	NIN_x	TXP_x	TXN_x
1	0	0	OFF	OFF
1	1	0	ON	OFF
1	0	1	OFF	ON
1	1	1	ON*	ON*
0	X	X	OFF	OFF

Note:

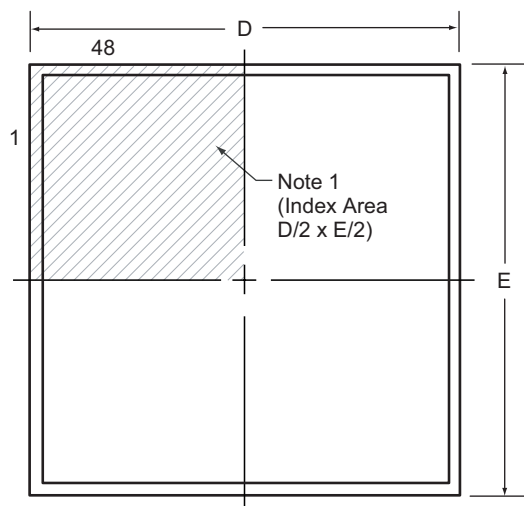
- * Not allowed, may damage IC.

Pin Description

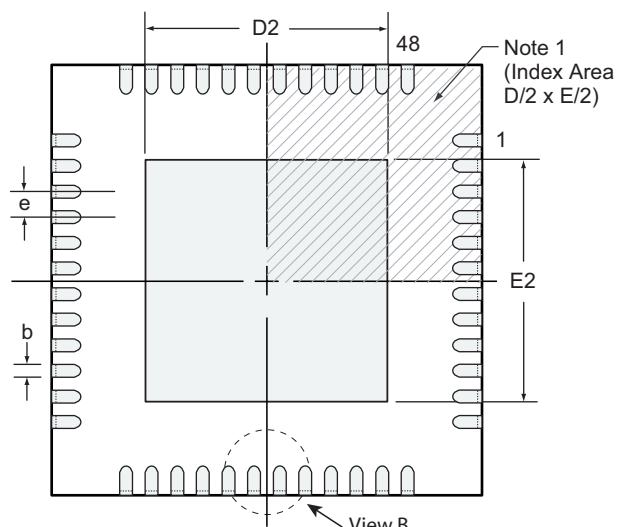
Pin #	Name	Function
1	VDD	Positive internal voltage supply (+9.0V).
2	VSS	Power supply return (0V).
3	PIN1	Input logic control of high voltage output P-FET of channel 1, Hi = ON, Low = OFF.
4	NIN1	Input logic control of high voltage output N-FET of channel 1, Hi = ON, Low = OFF.
5, 6, 7, 8	N/C	Not Connected
9	PIN2	Input logic control of high voltage output P-FET of channel 2, Hi = ON, Low = OFF.
10	NIN2	Input logic control of high voltage output N-FET of channel 2, Hi = ON, Low = OFF.
11	VSS	Power supply return (0V).
12	VDD	Positive internal voltage supply (+9.0V).
13	OTP	Over temperature protection output, open N-FET drain, active low if IC temperature >110°C.
14	MC1	Output current mode control pins, see Drive Mode Control Table.
15	MC0	
16	VSUB	Substrate of the IC, All VSUB pins must connect to the most positive potential of the IC externally.
17	VPF	P-FET gate driver floating power supply, $(V_{PP} - V_{PF}) = +9.0V$.
18,19, 20	VPP	Positive high voltage power supply (+75V).
21, 22, 23	VNN	Negative high voltage power supply (-75V).
24	VNF	N-FET gate driver floating power supply, $(V_{NF} - V_{NN}) = +9.0V$.
25	VSUB	Substrate of the IC, all VSUB pins must connect to the most positive potential of the IC externally.
26	RGND	Bleed resistors common return ground.
27	TXN2	Output N-FET drain (open drain output) for channel 2.
28		
29	TXP2	Output P-FET drain (open drain output) for channel 2.
30		
31	TXN1	Output N-FET drain (open drain output) for channel 1.
32		
33	TXP1	Output P-FET drain (open drain output) for channel 1.
34		
35	RGND	Bleed resistors common return ground.
36	VSUB	Substrate of the IC, all VSUB pins must connect to the most positive potential of the IC externally.
37	VNF	N-FET gate driver floating power supply, $(V_{NF} - V_{NN}) = +9.0V$.
38, 39, 40	VNN	Negative high voltage power supply (-75V).
41, 42, 43	VPP	Positive high voltage power supply (+75V).
44	VPF	P-FET gate driver floating power supply, $(V_{PP} - V_{PF}) = +9.0V$.
45	VSUB	Substrate of the IC, all VSUB pins must connect to the most positive potential of the IC externally.
46	EN	Chip power enable Hi = ON, Low = OFF.
47	GREF	Logic low reference, logic ground (0V).
48	VLL	Logic Hi voltage reference input (+3.3V).
Thermal Pad (VSUB)		Substrate bottom is internally connected to the central thermal pad on the bottom of package. It must be connected to VSUB, the most positive potential of the IC externally.

48-Lead QFN Package Outline (K6)

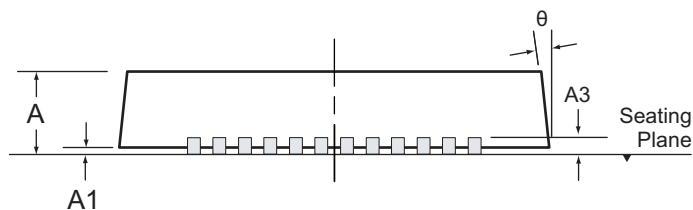
7x7mm body, 1.0mm height (max), 0.50mm pitch



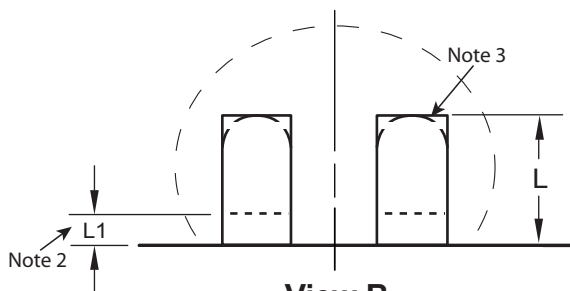
Top View



Bottom View



Side View



View B

Notes:

1. Details of Pin 1 identifier are optional, but must be located within the indicated area. The Pin 1 identifier may be either a mold, or an embedded metal or marked feature.
2. Depending on the method of manufacturing, a maximum of 0.15mm pullback (L1) may be present.
3. The inner tip of the lead may be either rounded or square.

Symbol	A	A1	A3	b	D	D2	E	E2	e	L	L1	θ	
Dimension (mm)	MIN	0.80	0.00	0.20 REF	0.18	6.85	2.25	6.85	2.25	0.50 BSC	0.30	0.00	0°
	NOM	0.90	0.02		0.25	7.00	4.70	7.00	4.70		0.40	-	-
	MAX	1.00	0.05		0.30	7.15	5.25	7.15	5.25		0.50	0.15	14°

JEDEC Registration MO-220, Variation VKKD-2, Issue K, June 2006.

Drawings are not to scale.

(The package drawing(s) in this data sheet may not reflect the most current specifications. For the latest package outline information go to <http://www.supertex.com/packaging.html>.)

Supertex inc. does not recommend the use of its products in life support applications, and will not knowingly sell its products for use in such applications, unless it receives an adequate "product liability indemnification insurance agreement". **Supertex** does not assume responsibility for use of devices described and limits its liability to the replacement of the devices determined defective due to workmanship. No responsibility is assumed for possible omissions or inaccuracies. Circuitry and specifications are subject to change without notice. For the latest product specifications, refer to the **Supertex** website: <http://www.supertex.com>.