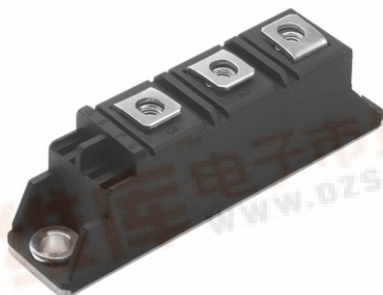


**VSKCS301/045P**

Vishay High Power Products

Schottky Rectifier, 300 A**ADD-A-PAK****PRODUCT SUMMARY**

$I_{F(AV)}$	300 A
-------------	-------

MECHANICAL DESCRIPTION

The Generation 5 of ADD-A-PAK module combine the excellent thermal performance obtained by the usage of direct bonded copper substrate with superior mechanical ruggedness, thanks to the insertion of a solid copper baseplate at the bottom side of the device.

The Cu baseplate allow an easier mounting on the majority of heatsink with increased tolerance of surface roughness and improved thermal spread.

The Generation 5 of ADD-A-PAK module is manufactured without hard mold, eliminating in this way any possible direct stress on the leads.

The electrical terminals are secured against axial pull-out: they are fixed to the module housing via a click-stop feature already tested and proved as reliable on other Vishay HPP modules.

FEATURES

- 175 °C T_J operation
- Low forward voltage drop
- High frequency operation
- Guard ring for enhanced ruggedness and long term reliability
- UL pending
- Totally lead (Pb)-free, RoHS compliant
- Designed and qualified for industrial level

**RoHS**
COMPLIANT**DESCRIPTION**

The VSKCS301.. Schottky rectifier common cathode has been optimized for low reverse leakage at high temperature. The proprietary barrier technology allows for reliable operation up to 175 °C junction temperature.

Typical applications are in high current switching power supplies, plating power supplies, UPS systems, converters, freewheeling diodes, welding, and reverse battery protection.

MAJOR RATINGS AND CHARACTERISTICS

SYMBOL	CHARACTERISTICS	VALUES	UNITS
$I_{F(AV)}$	Rectangular waveform	300	A
V_{RRM}		45	V
I_{FSM}	$t_p = 5 \mu s$ sine	16 000	A
V_F	150 Apk, $T_J = 125^\circ C$	0.65	V
T_J	Range	- 55 to 175	$^\circ C$

VOLTAGE RATINGS

PARAMETER	SYMBOL	VSKCS301/045P	UNITS
Maximum DC reverse voltage	V_R	45	V
Maximum working peak reverse voltage	V_{RWM}		



VSKCS301/045P

Vishay High Power Products Schottky Rectifier, 300 A



ABSOLUTE MAXIMUM RATINGS							
PARAMETER		SYMBOL	TEST CONDITIONS		VALUES	UNITS	
Maximum average forward current	per module	$I_{F(AV)}$	50 % duty cycle at $T_C = 109\text{ }^{\circ}\text{C}$, rectangular waveform		300	A	
	per leg				150		
Maximum peak one cycle non-repetitive surge current		I_{FSM}	5 μs sine or 3 μs rect. pulse	Following any rated load condition and with rated V_{RRM} applied	16 000		
			10 ms sine or 6 ms rect. pulse		3200		
Non-repetitive avalanche energy		E_{AS}	$T_J = 25\text{ }^{\circ}\text{C}$, $I_{AS} = 21\text{ Amps}$, $L = 1\text{ mH}$		202		mJ
Repetitive avalanche current (per leg)		I_{AR}	Current decaying linearly to zero in 1 μs Frequency limited by T_J maximum $V_A = 1.5 \times V_R$ typical		30		A

ELECTRICAL SPECIFICATIONS						
PARAMETER	SYMBOL	TEST CONDITIONS		VALUES	UNITS	
Maximum forward voltage drop	$V_{FM}^{(1)}$	150 A	$T_J = 25\text{ }^{\circ}\text{C}$	0.79	V	
		300 A		1.09		
		150 A	$T_J = 125\text{ }^{\circ}\text{C}$	0.65		
		300 A		0.91		
Maximum reverse leakage curent	$I_{RM}^{(1)}$	$T_J = 25\text{ }^{\circ}\text{C}$	$V_R = \text{Rated } V_R$	10	mA	
		$T_J = 125\text{ }^{\circ}\text{C}$		90		
Maximum junction capacitance	C_T	$V_R = 5\text{ V}_{DC}$ (test signal range 100 kHz to 1 MHz) $25\text{ }^{\circ}\text{C}$		5200	pF	
Typical series inductance	L_S	From top of terminal hole to mounting plane		7.0	nH	
Maximum voltage rate of change	dV/dt	Rated V_R		10 000	V/ μs	
RMS insulation voltage	V_{INS}	50 Hz, circuit to base, all terminals shorted (1 s)		3500	V	

Note

(1) Pulse width < 500 μs

THERMAL - MECHANICAL SPECIFICATIONS				
PARAMETER	SYMBOL	TEST CONDITIONS	VALUES	UNITS
Maximum junction and storage temperature range	T _J , T _{Stg}		- 55 to 175	°C
Maximum thermal resistance, junction to case per leg	R _{thJC}	DC operation	0.45	°C/W
Maximum thermal resistance, case to heatsink	R _{thCS}	Mounting surface, smooth and greased	0.1	
Approximate weight			110	g
			4	oz.
Mounting torque ± 10 %	to heatsink		5	Nm
	busbar		4	
Case style		JEDEC	TO-240AA	

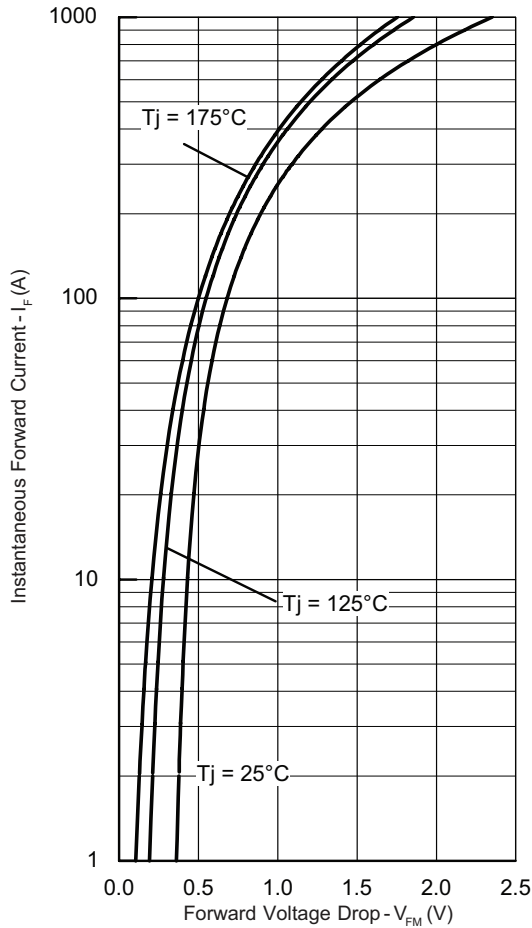


Fig. 1 - Maximum Forward Voltage Drop Characteristics

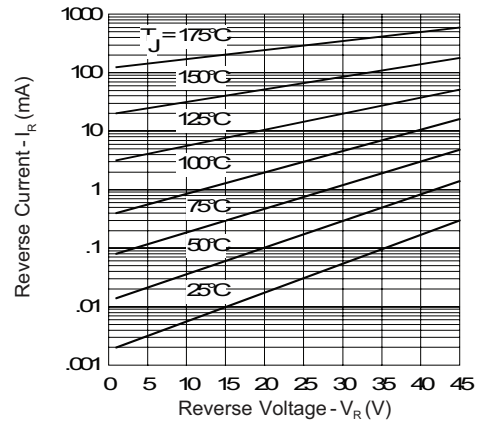


Fig. 2 - Typical Values of Reverse Current vs. Reverse Voltage

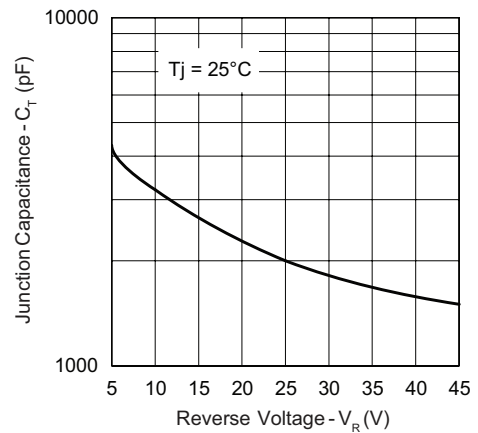


Fig. 3 - Typical Junction Capacitance vs. Reverse Voltage

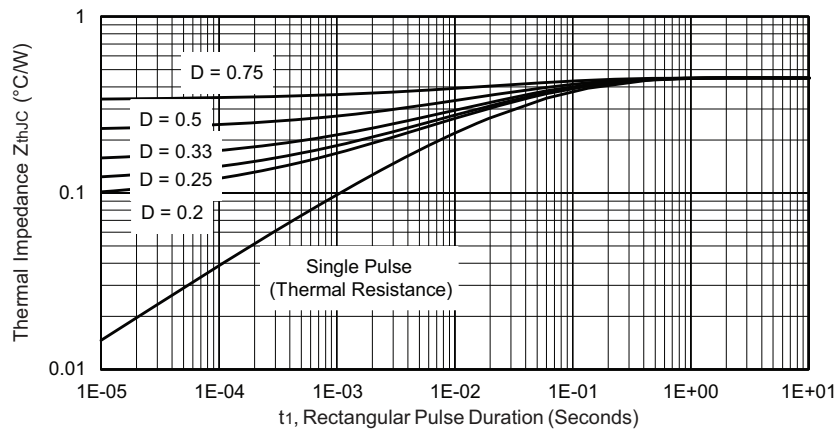


Fig. 4 - Maximum Thermal Impedance Z_{thJC} Characteristics

VSKCS301/045P

Vishay High Power Products Schottky Rectifier, 300 A

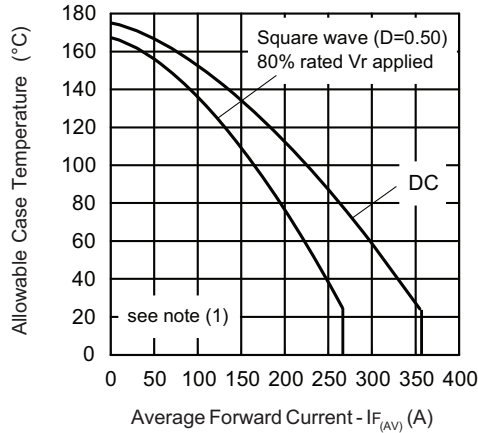


Fig. 5 - Maximum Allowable Case Temperature vs. Average Forward Current

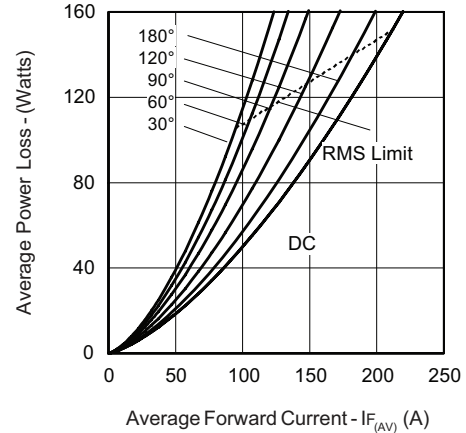


Fig. 6 - Forward Power Loss Characteristics

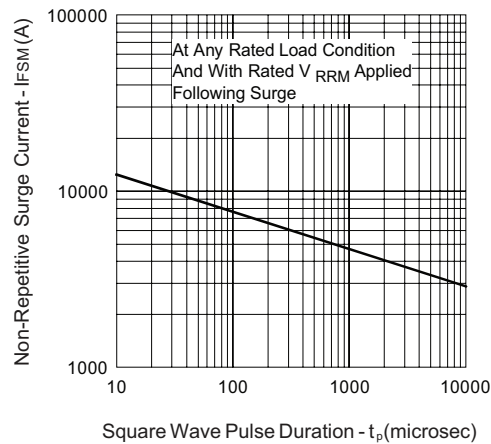


Fig. 7 - Maximum Non-Repetitive Surge Current

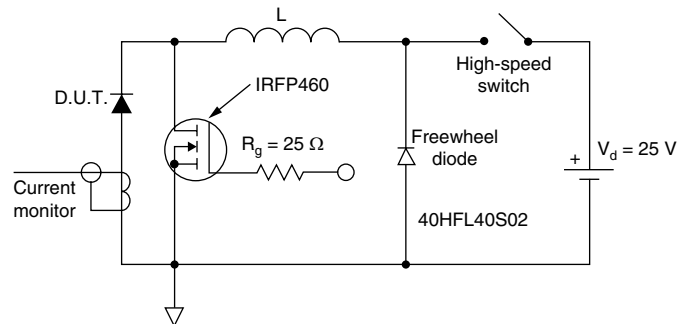


Fig. 8 - Unclamped Inductive Test Circuit

Note

- (1) Formula used: $T_C = T_J - (P_d + P_{dREV}) \times R_{thJC}$;
 P_d = Forward power loss = $I_{F(AV)} \times V_{FM}$ at $(I_{F(AV)}/D)$ (see fig. 6);
 P_{dREV} = Inverse power loss = $V_{R1} \times I_R (1 - D)$; I_R at $V_{R1} = 80\%$ rated V_R



VSKCS301/045P

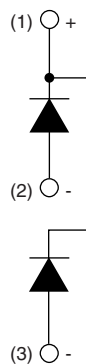
Schottky Rectifier, 300 A Vishay High Power Products

ORDERING INFORMATION TABLE

Device code	VS	KC	S	30	1	/	045	P
	①	②	③	④	⑤		⑥	⑦

- 1** - Vishay HPP
- 2** - Circuit configuration:
KC = ADD-A-PAK - 2 diodes/common cathode
- 3** - S = Schottky diode
- 4** - Average rating (x 10)
- 5** - Product silicon identification
- 6** - Voltage rating (045 = 45 V)
- 7** - Lead (Pb)-free

CIRCUIT CONFIGURATION



LINKS TO RELATED DOCUMENTS	
Dimensions	http://www.vishay.com/doc?95174



Disclaimer

All product specifications and data are subject to change without notice.

Vishay Intertechnology, Inc., its affiliates, agents, and employees, and all persons acting on its or their behalf (collectively, "Vishay"), disclaim any and all liability for any errors, inaccuracies or incompleteness contained herein or in any other disclosure relating to any product.

Vishay disclaims any and all liability arising out of the use or application of any product described herein or of any information provided herein to the maximum extent permitted by law. The product specifications do not expand or otherwise modify Vishay's terms and conditions of purchase, including but not limited to the warranty expressed therein, which apply to these products.

No license, express or implied, by estoppel or otherwise, to any intellectual property rights is granted by this document or by any conduct of Vishay.

The products shown herein are not designed for use in medical, life-saving, or life-sustaining applications unless otherwise expressly indicated. Customers using or selling Vishay products not expressly indicated for use in such applications do so entirely at their own risk and agree to fully indemnify Vishay for any damages arising or resulting from such use or sale. Please contact authorized Vishay personnel to obtain written terms and conditions regarding products designed for such applications.

Product names and markings noted herein may be trademarks of their respective owners.