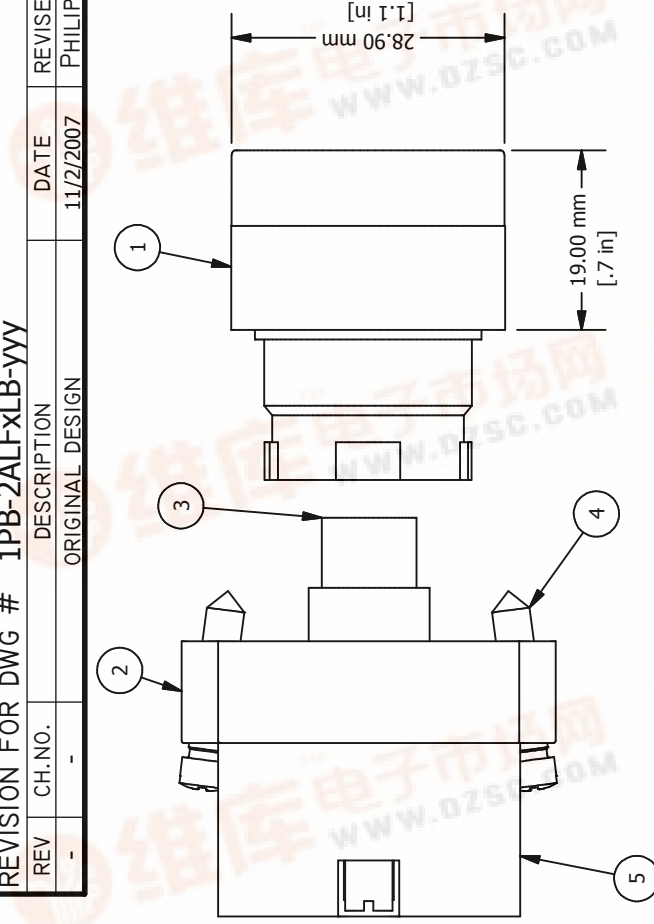


REVISION FOR DWG # 1PB-2ALFXLB-YYY

REV	CH.NO.	DESCRIPTION	DATE	REVISED BY
-	-	ORIGINAL DESIGN	11/2/2007	PHILIPP E.

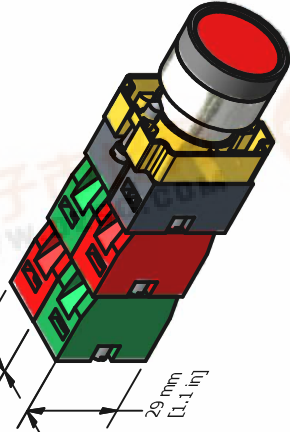
查询2ALF1LB-012供应商



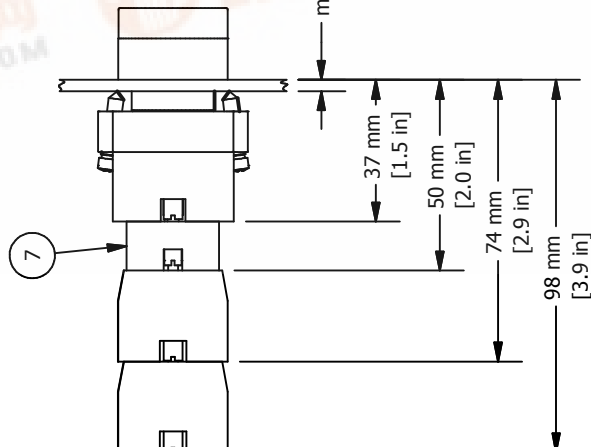
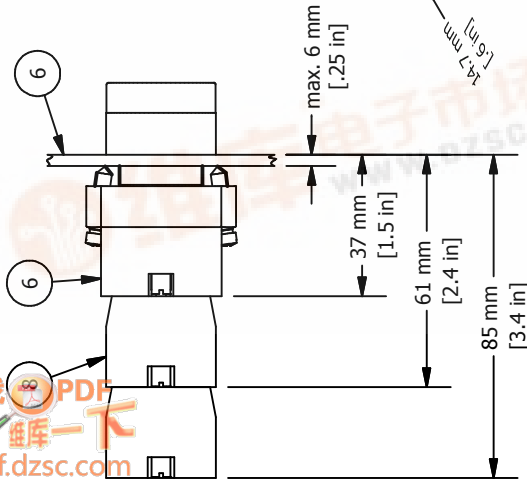
\* = Selector Switch is supplied with mounting bracket, bulb holder and LED (ITEM 1,2,3,4 and 5)  
 \*\* = Switch Contacts must be ordered separately

ITEM DESCRIPTION	CAT. NO.	COLOR	MIN. QTY.	MAX. QTY.
LED Illuminated Metal	2ALF1LB-yyy	White	1	1
Selector Switch (Flush, Momentary)	2ALF3LB-yyy	Green	1	1
	2ALF4LB-yyy	Red	1	1
	2ALF5LB-yyy	Amber	1	1
	2ALF6LB-yyy	Blue	1	1
	2ALF7LB-yyy	Clear	1	1
	2ALF8LB-yyy	Yellow	1	1
Mounting Bracket	2BRK	-	1	1
LED Bulb	MCB9xyyy	-	1	1
Mounting Bracket Screws	incl. in 2BRK	-	2	2
Bulb Holder	2LHB	-	1	1
Panel	-	-	-	-
Maintained Action mechanism	2PPM	Black	1	1
	S1	Green	1	1
	S2	Red	1	1
	S3	Green/Black	1	1
Switch Contacts	S4	Red/Black	1	1

yyy = Voltage	
012	= 12V AC/DC
024	= 24V AC/DC
048	= 48V AC/DC
110	= 110V AC/DC
230	= 230V AC
230D	= 230V DC



Up to **four** switch contacts can be installed.



For maintained action use Cat. No. 2PPM (ITEM 7)

AND IS A CONFIDENTIAL DISCLOSURE WITHOUT CONSIDERATION OTHER THAN THE BORROWER'S AGREEMENT THAT IT SHALL NOT BE REPRODUCED, COPIED, LENT OR DISPOSED OF DIRECTLY OR INDIRECTLY NOR USED FOR ANY PURPOSE OTHER THAN THAT FOR WHICH IT IS SPECIFICALLY FURNISHED.

This Drawing is the property of **Altech Corp.**  
 35 Royal Road  
 Flemington, NJ 08822-6000  
 (908) 806-9400  
 Fax (908) 806-9490

TERMINAL	TOLERANCE
A	= ±1 mm
X	= ±0.5 mm
.XX	= ±0.2 mm
L	= - mm

TITLE 22 mm LED Illuminated Metal Flush Momentary Operator  
 2ALFXLB-YYY (x= color, yyy=voltage)

DRAWN BY: Philip Ernstberger	11/2/2007	DRAWING NO.:	REV.:
CHECKED BY: Laszlo Gyorgypal	11/2/2007	1PB-2ALFXLB-YYY	-
RELEASED BY: Laszlo Gyorgypal	11/2/2007	SCALE:	SHEET: 1 OF: 1