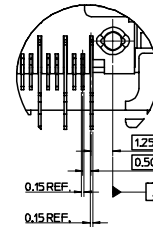
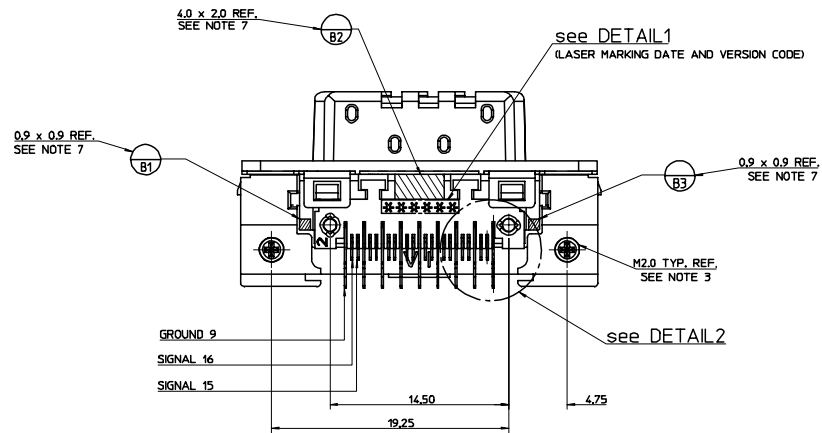
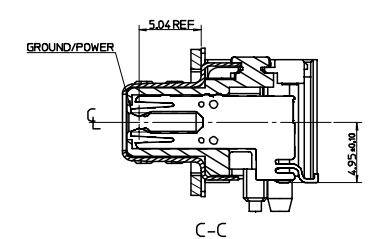
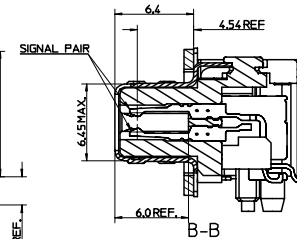
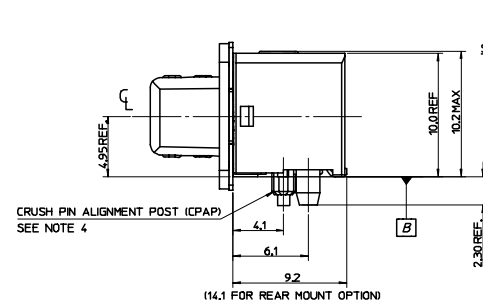
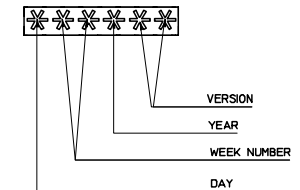




DETAIL2  
Scale 7:1



DETAIL1  
Scale 10:1



- NOTES:
1. PRODUCT SPECIFICATION PS-91525-001
  2. PACKAGING SPECIFICATION PK-91525-002 (TRAY) AND PK-91525-004 (TAPE AND REEL)
  3. SCREW THREAD M2.0 X 0.4 PITCH TAPPED THROUGH, RECOMMENDED SCREW THREAD M2 X 0.4 PITCH, LENGTH 8mm, WITH A PAN HEAD, RECOMMENDED TORQUE 0.3 Nm, MAX.
  4. CPAP USED TO ALIGN THE SOLDER TAILS WITH THE PCB SOLDER PADS.
  5. RECEPTACLE CONTACTS 127um MIN NICKEL ALL OVER  
CONTACT AREA 0.10 um MIN GOLD OVER 0.76 um MIN PALLADIUM NICKEL  
SMT AREA 3 um MIN TIN
  6. PICK AND PLACE AREA FOR VACUUM PICK UP
  7. PCB DATUM B = B1 + B2 + B3
  8. FOR 12X PARTS PLEASE REFER TO SD-91629-004

ORIGINAL RELEASE EC NO: E2005-0626 DRAWN BY: DWALSH CHECKED BY: KDELANEY APPR: JWALLACE DATE: 2005/02/25	DESCRIPTION CRYCO: DWALSH APPR: JWALLACE DATE: 2005/02/25	QUALITY SYMBOLS  ▽=0 ▽=0	GENERAL TOLERANCES (UNLESS SPECIFIED)			DIMENSION STYLE MM ONLY		SCALE 5:1	DESIGN UNITS METRIC	 THIRD ANGLE PROJECTION
					DRAWN BY	DATE	TITLE			
			4 PLACES ±---		DWALSH	04.10.15	LANELINK F CONN 4X JACKCREW VERSION WITH EMI SHIELD OPTION			
			3 PLACES ±---		CHECKED BY	DATE	MOLEX INCORPORATED			
			2 PLACES ±0.1		KDELANEY	04.10.21				
			1 PLACE ±0.2		APPROVED BY	DATE				
			ANGULAR ± 2 °		JWALLACE	04.10.28	 MOLEX INCORPORATED			
					MATERIAL NO.		DOCUMENT NO.		SHEET NO.	
			DRAFT WHERE APPLICABLE MUST REMAIN WITHIN DIMENSIONS		SEE SHEET 4		SD-91803-001		1 OF 4	
			SIZE 1		THIS DRAWING CONTAINS INFORMATION THAT IS PROPRIETARY TO MOLEX INCORPORATED AND SHOULD NOT BE USED WITHOUT WRITTEN PERMISSION					

GROUND (9)

$\phi 2.2 \pm 0.05$  TYP.  
(P.T.H.)

CONNECTOR MOUNTING AREA

4.80 REF.  
SEE NOTES

INNER SURFACE  
OF MACHINE PANEL

EDGE OF P.C.B.

see DETAIL 6

22.75

19.25  $\pm 0.05$  TYP.

14.5  $\pm 0.05$

14.00

0.50

8.25

4.75  $\pm 0.05$  TYP.

see DETAIL 3

CRUSH PIN ALIGNMENT HOLES

5.70  $\pm 0.2$   
(P.C.B. THICKNESS)

12 SOLDER POSTS†

10.1  $\pm 0.2$   
(4 SOLDER POSTS)

3.9  $\pm 0.05$  (x2)

4.6  $\pm 0.05$  TYP.

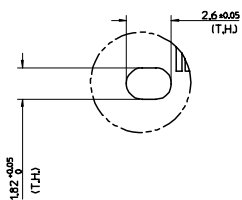
5.9  $\pm 0.05$  (x2)

6.7  $\pm 0.05$  TYP.

9.7

SIGNAL 16

SIGNAL 15



This mechanical drawing illustrates a connector assembly with the following specifications:

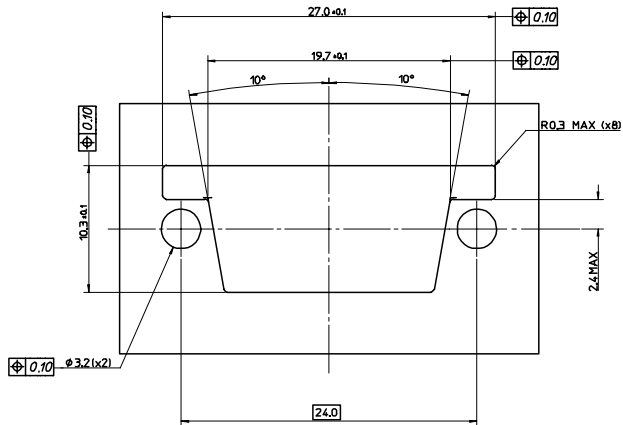
- Overall Width:**  $\Phi 0.05 A$  (TYP.)
- Pin Pitch:** 150 PITCH
- Pin Spacing:** 0.310  $\pm 0.005$  TYP.
- Pin Diameter:** 0.5
- Pin Length:** 2.6  $\pm 0.005$  TYP.
- Pin Thickness:** 2.6  $\pm 0.005$  TYP.
- Ground Feature:** GROUND 1
- Signal Features:** SIGNAL 1 and SIGNAL 2
- Feature Diameter:**  $\phi 1.82 \pm 0.05$  (T.H.)
- Feature Length:** 1.25
- Feature Width:** 0.05

NOTES:

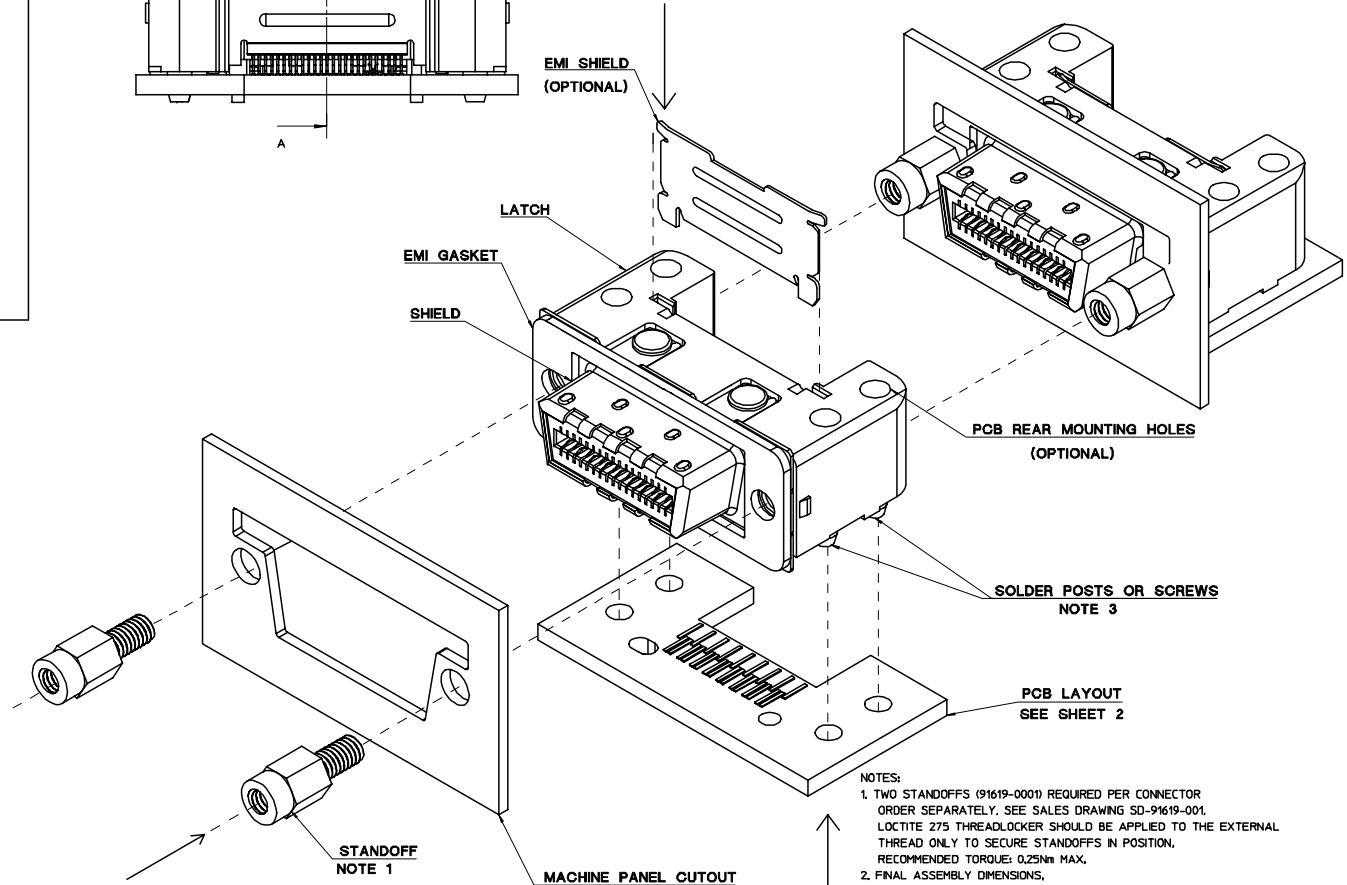
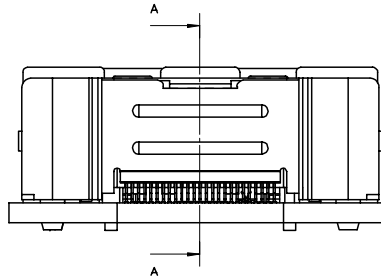
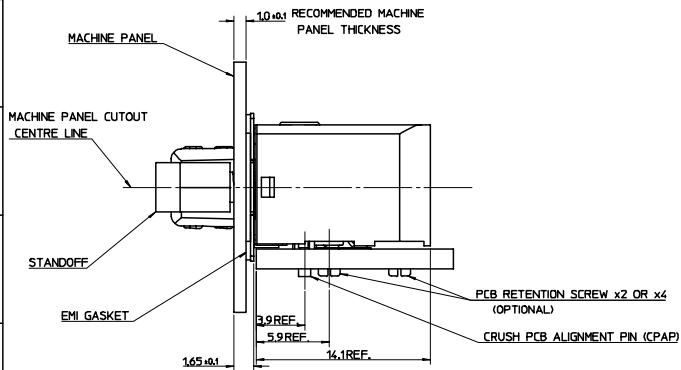
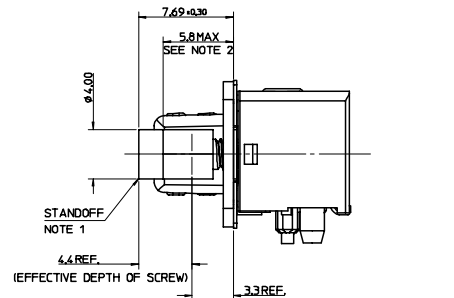
1. AREAS OUTLINED TO BE FREE OF COMPONENTS
2. ALL HOLE SIZES ARE FINISHED HOLE SIZES.
3. FOR ANY UNSPECIFIED DIMENSIONS OR NOTES SEE SHEET 1
4. RECOMMENDED PCB THICKNESSES: 1.6 TO 2.10mm INCLUSIVE.  
LONGER SOLDER POSTS AVAILABLE FOR OTHER PCB THICKNESSES.  
FOR FURTHER INFORMATION PLEASE CONTACT LOCAL SALES OFFICE.
5. THE DESIGN CAN ACCOMMODATE DIFFERENT VALUES OF THIS DIMENSION  
BY VARYING THE EMI GASKET THICKNESS.  
FOR FURTHER INFORMATION PLEASE CONTACT LOCAL SALES OFFICE.

<div>SEE SHEET 1</div> <div>EC NO: E2005-0626</div> <div>DWG NO: 200510273</div> <div>CHKD: DWK/KELANEY</div> <div>APPR: WALLACE</div> <div>200510273</div> <div>A</div>	QUALITY SYMBOLS	GENERAL TOLERANCES (UNLESS SPECIFIED)		DIMENSION STYLE MM ONLY		SCALE 8:1	DESIGN UNITS METRIC	THIRD ANGLE PROJECTION												
	<div>▽=0</div> <div>▽=0</div>	<table><tr><th>mm</th><th>INCH</th></tr><tr><td>4 PLACES +---+---+</td><td>---</td></tr><tr><td>3 PLACES +---+---+</td><td>---</td></tr><tr><td>2 PLACES +0.1 +---+</td><td>---</td></tr><tr><td>1 PLACE +0.2 +---+</td><td>---</td></tr><tr><td colspan="2">ANGULAR ± 2°</td></tr></table>	mm	INCH	4 PLACES +---+---+	---	3 PLACES +---+---+	---	2 PLACES +0.1 +---+	---	1 PLACE +0.2 +---+	---	ANGULAR ± 2°		<div>DRAWN BY DWALSH</div> <div>DATE 04, 10, 15</div> <div>CHECKED BY KDELANEY</div> <div>DATE 04, 10, 21</div> <div>APPROVED BY DATE 04, 10, 28</div>	TITLE LANELINK F CONN 4X JACKCREW VERSION WITH EMI SHIELD OPTION MOLEX INCORPORATED				
	mm	INCH																		
	4 PLACES +---+---+	---																		
3 PLACES +---+---+	---																			
2 PLACES +0.1 +---+	---																			
1 PLACE +0.2 +---+	---																			
ANGULAR ± 2°																				
	MATERIAL NO. SEE SHEET 4		DOCUMENT NO. SD-9803-001		SHEET NO. 2 OF 4															
	DRAFT WHERE APPLICABLE MUST REMAIN WITHIN DIMENSIONS		SIZE 1 THIS DRAWING CONTAINS INFORMATION THAT IS PROPRIETARY TO MOLEX INCORPORATED AND SHOULD NOT BE USED WITHOUT WRITTEN PERMISSION																	

# RECOMMENDED MACHINE PANEL CUTOUT



# STANDOFF ASSEMBLY WITHOUT OPTIONAL FEATURES

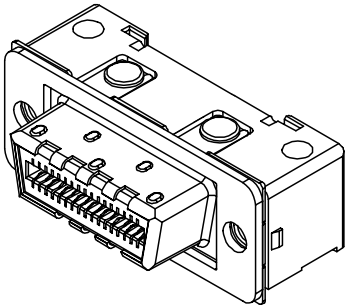
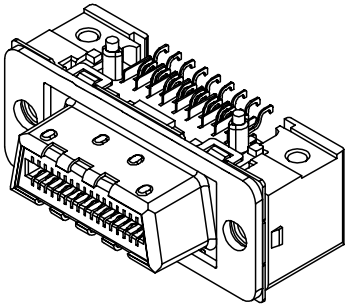


- NOTES:
1. TWO STANDOFFS (91619-0001) REQUIRED PER CONNECTOR ORDER SEPARATELY. SEE SALES DRAWING SD-91619-001. LOCITE 275 THREADLOCKER SHOULD BE APPLIED TO THE EXTERNAL THREAD ONLY TO SECURE STANDOFFS IN POSITION. RECOMMENDED TORQUE: 0.25Nm MAX.
  2. FINAL ASSEMBLY DIMENSIONS, PCB RETENTION OPTIONS:
    - 2 OR 4 SCREWS, (4 FOR REAR MOUNT OPTION)
    - 2 OR 4 SOLDER POSTS, (4 FOR REAR MOUNT OPTIONS).
  3. EMI SHIELD IS TO BE ASSEMBLED TO CONNECTOR AFTER REFLOW (OPTIONAL). FOR DETAILS OF EMI SHIELD SEE SALES DRAWING SD-91789-001
  4. RECOMMENDED SCREW THREAD M2 X 0.4 PITCH, LENGTH 8mm, WITH A PAN HEAD. RECOMMENDED TORQUE 0.3 Nm, MAX.
  5. REFER TO SHEET 1 FOR ALL UNSPECIFIED DIMENSIONS.

QUALITY SYMBOLS		GENERAL TOLERANCES (UNLESS SPECIFIED)		DIMENSION STYLE		SCALE		DESIGN UNITS		THIRD ANGLE PROJECTION	
				MM ONLY		5:1		METRIC			
▽=0		4 PLACES ±---		DRAWN BY		DATE		TITLE			
▽=0		3 PLACES ±---		DWALSH		04.10.15		LANELINK F CONN 4X			
		2 PLACES ±0.1		CHECKED BY		DATE		JACKCREW VERSION			
		1 PLACE ±0.2		KDELANEY		04.10.21		WITH EMI SHIELD OPTION			
		ANGULAR ± 2 °		APPROVED BY		DATE		MOLEX INCORPORATED			
				JWALLACE		04.10.28		MATERIAL NO.		DOCUMENT NO.	
								SD-91803-001		SHEET NO.	
										3 OF 4	

**4X JACKSCREW I/O**

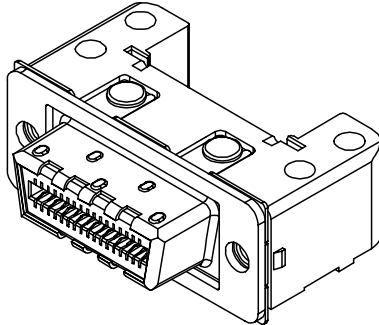
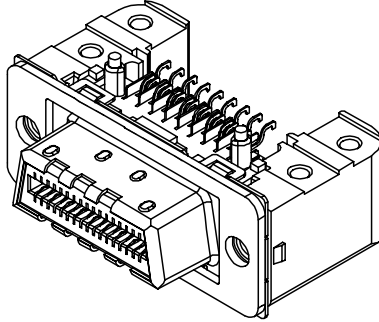
REAR MOUNTS	NO
SOLDER POSTS	NO



PART NO.	PACKAGING
91803-0410	TRAY
91803-8410	TAPE AND REEL

**4X JACKSCREW I/O**

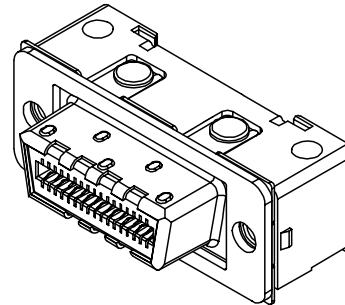
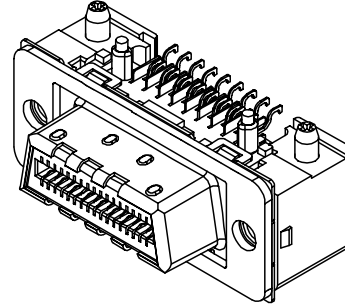
REAR MOUNTS	YES
SOLDER POSTS	NO



PART NO.	PACKAGING
91803-0412	TRAY
91803-8412	TAPE AND REEL

**4X JACKSCREW I/O**

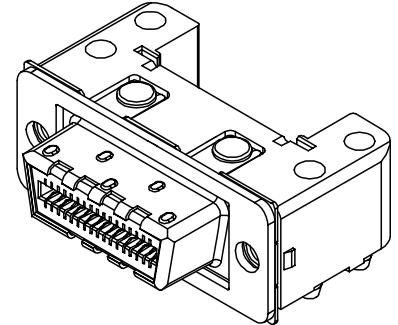
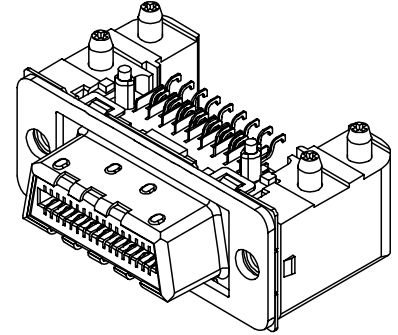
REAR MOUNTS	NO
SOLDER POSTS	2



PART NO.	PACKAGING
91803-0414	TRAY
91803-8414	TAPE AND REEL

**4X JACKSCREW I/O**


REAR MOUNTS	YES
SOLDER POSTS	4



PART NO.	PACKAGING
91803-0416	TRAY
91803-8416	TAPE AND REEL

**NOTES:**

1. REFER TO SHEET 1 FOR ALL UNSPECIFIED DIMENSIONS.
2. REFER TO SHEET 2 FOR PCB LAYOUT
3. REFER TO SHEET 3 FOR RECOMMENDED ASSEMBLY COMPONENTS AND DIMENSIONS.
4. FOR 12X PARTS PLEASE REFER TO SD-91629-004

SEE SHEET 1 EC NO. E2003-0626 DRAWN BY: DWALSH CHKD: CHAD APPR: JWALLACE REV: A	QUALITY SYMBOLS ▽=0 ▽=0	GENERAL TOLERANCES (UNLESS SPECIFIED)		DIMENSION STYLE MM ONLY		SCALE 5:1	DESIGN UNITS METRIC	 THIRD ANGLE PROJECTION
		mm INCH		DRAWN BY DWALSH	DATE 04.10.15	TITLE LANELINK F CONN 4X JACKSCREW VERSION WITH EMI SHIELD OPTION		
		4 PLACES ±--- ±---		CHECKED BY KDELANEY	DATE 04.10.21	APPROVED BY JWALLACE		
		3 PLACES ±--- ±---		MATERIAL NO. 91803-4**		DOCUMENT NO. SD-91803-001		
		2 PLACES ±0.1 ±---		SIZE A1		THIS DRAWING CONTAINS INFORMATION THAT IS PROPRIETARY TO MOLEX INCORPORATED AND SHOULD NOT BE USED WITHOUT WRITTEN PERMISSION		
		1 PLACE ±0.2 ±---		DRAFT WHERE APPLICABLE MUST REMAIN WITHIN DIMENSIONS		SHEET NO. 4 OF 4		
		ANGULAR ± 2 °						