

FAN2564

300mA Low V_{IN} LDO for Digital Applications

Features

- Input Voltage 1.65V to 3.6V
- Guaranteed 300mA Output
- High Initial Output Voltage Accuracy: $\pm 1\%$
- Fixed Output Voltage options from 1.2V to 2.8V
- Very Low Dropout: 100mV at 300mA
- 45 μ A Quiescent Current at No Load
- Low Output Noise of 100 μ V_{RMS}
- Inrush Current Controlled to Less Than 500mA
- PSRR of 60dB at 1kHz
- 100 μ s Startup Time
- Stable with Ceramic Capacitors
- Thermal and Short-Circuit Protection
- 4-bump WLCSP, 0.5mm Pitch
- 6-pin 2 x 2mm UMLP

Description

The FAN2564 operates from a minimum input of 1.65V and provides outputs as low as 1.2V. Output current is guaranteed to 300mA, making this regulator ideal for digital loads.

The unique low input voltage capability and very low dropout make this device an ideal post regulator to a synchronous buck regulator. In this configuration, accurate low voltage regulation is provided without the inefficiencies typically related to linear regulators.

The enable pin can be used to initiate shutdown mode, where the operating current falls to an extremely low 10nA, typically.

The FAN2564 is designed to be stable with space-saving ceramic capacitors as small as 0402 case size.

The FAN2564 is available in 4-bump 0.5mm pitch wafer-level chip-scale package (WLCSP) and a 6-lead 2 x 2mm ultra-thin molded leadless package (UMLP).

Applications

- Post Regulator
- Cell Phones and Smart Phones
- WLAN, 3G, and 4G Data Cards
- PMP and MP3 Players

Typical Application Circuit

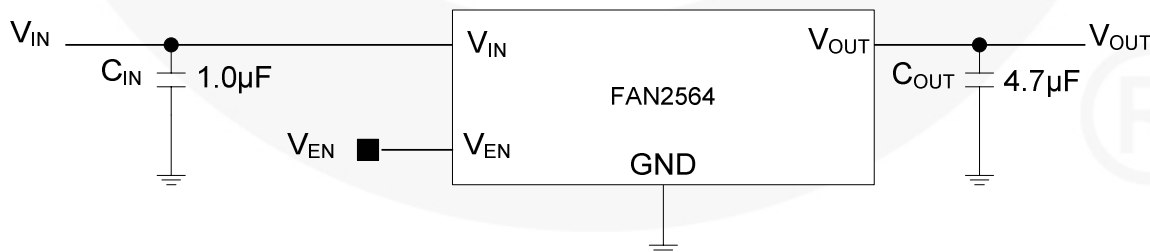


Figure 1. Typical Application Circuit

Ordering Information

| Part Number | Output Voltage ⁽¹⁾ | Temperature Range | Package | Eco Status | Packing Method |
|---------------|-------------------------------|-------------------|---------------------|------------|----------------|
| FAN2564UC12X | 1.2 | -40 to 85°C | WLCSP-4 0.5mm Pitch | Green | Tape and Reel |
| FAN2564UC13X | 1.3 | | | | |
| FAN2564UC15X | 1.5 | | | | |
| FAN2564UC18X | 1.8 | | | | |
| FAN2564UMP12X | 1.2 | -40 to 85°C | 6 Lead UMLP 2 x 2mm | RoHS | Tape and Reel |
| FAN2564UMP13X | 1.3 | | | | |
| FAN2564UMP15X | 1.5 | | | | |
| FAN2564UMP18X | 1.8 | | | | |

Notes:

 For Fairchild's definition of "green" Eco Status, please visit: http://www.fairchildsemi.com/company/green/rohs_green.html.

1. Other voltage options available upon request. Contact a Fairchild representative.

Block Diagram

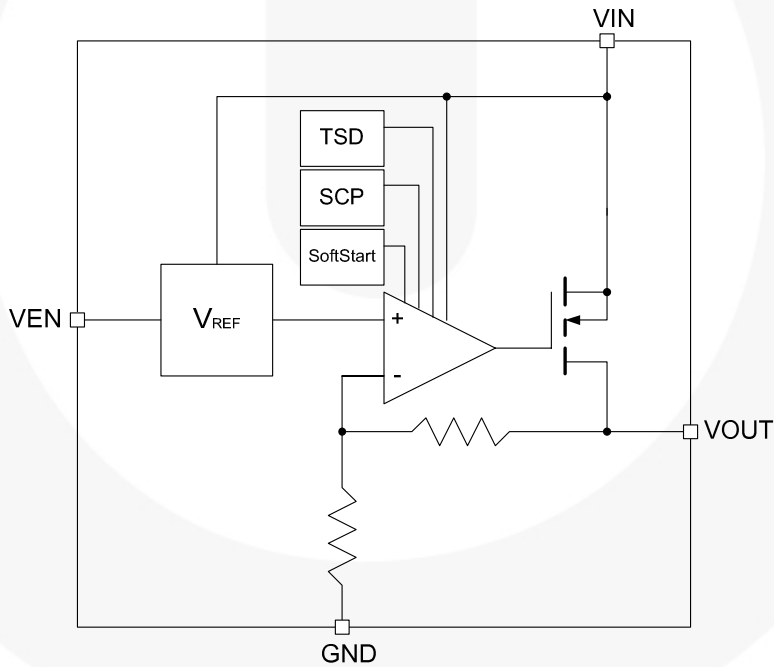


Figure 2. Block Diagram

Pin Configuration

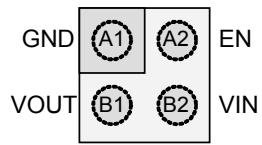


Figure 3. WLCSP Bumps Facing Down

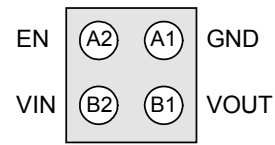


Figure 4. WLCSP, Bumps Facing Up

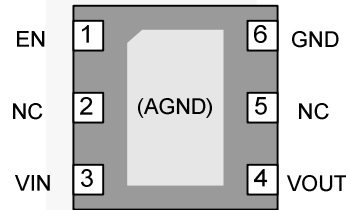


Figure 5. UMLP, Leads Facing Down

Pin Definitions

| Pin # | | Name | Description |
|-------|------|------|---|
| WLCSP | UMLP | | |
| A1 | 6 | GND | Ground. Power and IC ground. All signals are referenced to this pin. |
| B1 | 4 | VOUT | V_{OUT}. Connect to output voltage. |
| B2 | 3 | VIN | Input Voltage. Connect to input power source. |
| A2 | 1 | EN | Enable. The device is in shutdown mode when voltage to this pin is $<0.4V$ and enabled when $>0.95V$. |
| | 5 | NC | No connect. |
| | 2 | NC | No connect. |

Absolute Maximum Ratings

Stresses exceeding the absolute maximum ratings may damage the device. The device may not function or be operable above the recommended operating conditions and stressing the parts to these levels is not recommended. In addition, extended exposure to stresses above the recommended operating conditions may affect device reliability. The absolute maximum ratings are stress ratings only.

| Symbol | Parameter | Min. | Max. | Units | |
|-----------|--|--------------------------------------|----------|-------|----|
| V_{IN} | Input Voltage with Respect to GND | -0.3 | 4.5 | V | |
| | Voltage on Any Other Pin with Respect to GND | -0.3 | V_{IN} | V | |
| T_J | Junction Temperature | -40 | +150 | °C | |
| T_{STG} | Storage Temperature | -65 | +150 | °C | |
| T_L | Lead Temperature (Soldering 10 Seconds) | | +260 | °C | |
| ESD | Electrostatic Discharge Protection Level | Human Body Model per JESD22-A114 | 4 | | kV |
| | | Charged Device Model per JESD22-C101 | 2 | | |
| | | Machine Model per JESD22-A115 | 200 | | V |

Recommended Operating Conditions

The Recommended Operating Conditions table defines the conditions for actual device operation. Recommended operating conditions are specified to ensure optimal performance to the datasheet specifications. Fairchild does not recommend exceeding them or designing to Absolute Maximum Ratings.

| Symbol | Parameter | Min. | Typ. | Max. | Units |
|-----------|--------------------------------|------|------|------|---------|
| V_{CC} | Supply Voltage Range | 1.8 | | 3.6 | V |
| I_{OUT} | Output Current | 0 | | 300 | mA |
| C_{IN} | Input Capacitor | | 1.0 | | μ F |
| C_{OUT} | Output Capacitor | 1.0 | 4.7 | 10.0 | μ F |
| T_A | Operating Ambient Temperature | -40 | | +85 | °C |
| T_J | Operating Junction Temperature | -40 | | +125 | °C |

Thermal Properties

| Symbol | Parameter | Min. | Typ. | Max. | Units |
|---------------|---|-------|------|------|-------|
| Θ_{JA} | Junction-to-Ambient Thermal Resistance ⁽²⁾ | WLSCP | | 200 | °C/W |
| | | UMLP | | 49 | °C/W |

Note:

- Junction-to-ambient thermal resistance is a function of application and board layout. This data is measured with four-layer 2s2p boards in accordance to JESD51- JEDEC standard. Special attention must be paid not to exceed junction temperature $T_{J(max)}$ at a given ambient temperature T_A .

Electrical Characteristics

$V_{IN}^{(3)} = V_{OUT} + 0.5V$ or $1.8V$ (whichever is higher). $T_A = -40^{\circ}C$ to $+85^{\circ}C$, test circuit is Figure 1, typical values are at $T_A = 25^{\circ}C$, $I_{LOAD} = 1mA$, $V_{EN} = V_{IN}$, unless otherwise noted.

| Symbol | Parameter | Conditions | Min. | Typ. | Max. | Units |
|-------------------------------|---|---|--|----------|------|---------------|
| Power Supplies | | | | | | |
| V_{IN} | Input Voltage Range | | 1.65 | | 3.60 | V |
| I_{GND} | Ground Current | $I_{LOAD} = 0mA$ | | 45 | 75 | μA |
| | | $I_{LOAD} = 300mA$ | | 140 | 200 | μA |
| I_{SD} | Shutdown Supply Current | $V_{IN} = 3.6V$, $EN = GND$ | | 0.01 | 1.00 | μA |
| $V_{(EN)}$ | Enable High-level Input Voltage | | 0.95 | | | V |
| | Enable Low-level Input Voltage | | | | 0.4 | |
| $I_{(EN)}$ | Enable Input Leakage Current | $EN = GND$ | | 0 | | μA |
| | | $EN = V_{IN} = 3.6V$ | | 2.5 | 4.0 | |
| Regulation | | | | | | |
| I_{OUT} | Minimum Output Current | | 0 | | | mA |
| I_{OUT} | Maximum Output Current | | 300 | | | mA |
| V_{DO} | Dropout Voltage ⁽⁴⁾ | $I_{LOAD} = 300mA$ | | 100 | 160 | mV |
| ΔV_{OUT} | Output Voltage Accuracy | 1.8V | Over Full V_{IN} , I_{OUT} , at Room Temperature | -1.0 | 1.0 | % |
| | | 1.2V, 1.3V, 1.5V | | -1.5 | 1.5 | |
| | | 1.2V, 1.3V, 1.5V, 1.8V | Over Full V_{IN} , I_{OUT} , Tempera- ture Range | -2.5 | 2.5 | |
| $\Delta V_{OUTline}$ | Line Regulation | $V_{IN} = V_{OUT(NOM)} + 0.5V$ to $3.6V$, $I_{OUT} = 1mA$ | | 0.03 | 0.50 | %/V |
| $\Delta V_{OUTload}$ | Load Regulation | $I_{OUT} = 1mA$ to $300mA$ | | 10 | 60 | $\mu V/mA$ |
| I_{SCP} | Short-circuit Current Limit | | | 500 | 900 | mA |
| I_{SU} | Start-up Peak Current | EN Transition, LOW to HIGH | | 500 | 900 | mA |
| t_{ON} | Turn-on Time ⁽⁵⁾ | EN Transition, LOW to HIGH | | 100 | | μs |
| | Startup Overshoot ⁽⁵⁾ | $I_{OUT} = 1mA$ | | 0 | | % |
| TSD | Thermal Shutdown | Rising Temperature | | +160 | | $^{\circ}C$ |
| | | Hysteresis | | +30 | | $^{\circ}C$ |
| PSRR | Power Supply Rejection Ratio ⁽⁵⁾ | $f = 1kHz$ | | 60 | | dB |
| e_n | Output Noise Voltage ⁽⁵⁾ | 10Hz to 100kHz | | 100 | | μV_{RMS} |
| Timing Characteristics | | | | | | |
| Peak $\Delta V_{OUTline}$ | Line Transient Response ⁽⁵⁾ | 600mV, $t_{RISE} = t_{FALL} = 30\mu s$ | | ± 6 | | mV |
| Peak $\Delta V_{OUTload}$ | Load Transient Response ⁽⁵⁾ | 1mA-300mA-1mA, $t_{RISE} = t_{FALL} = 1\mu s$ | | ± 50 | | mV |

Note:

- V_{IN} voltage tolerance +/- 5%.
- Dropout voltage is the minimum input to output differential voltage needed to maintain V_{OUT} to within 5% of nominal value. This parameter is only specified for output voltages greater than or equal to 1.8V.
- This electrical specification is guaranteed by design.

Typical Performance Characteristics

Unless otherwise noted, $V_{IN} = V_{OUT(Nominal)} + 0.5V$ or $1.8V$ (whichever is greater), $V_{OUT} = 1.2V$, $C_{IN} = 1\mu F$, $C_{OUT} = 4.7\mu F$, and $T_A = 25^\circ C$.

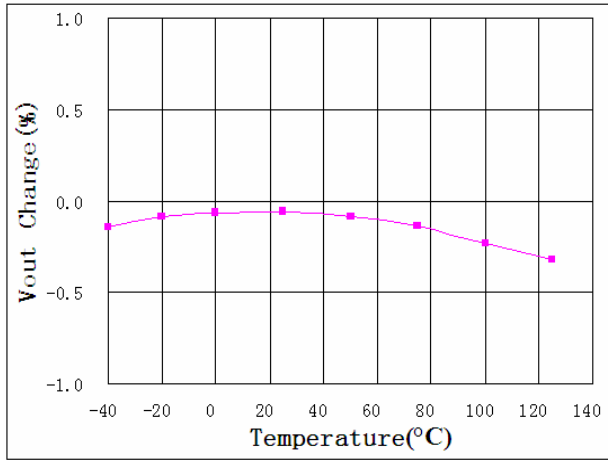


Figure 6. Output Voltage Change vs. Temperature

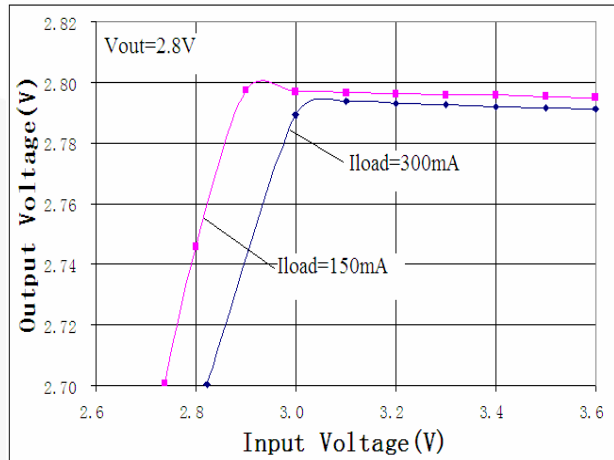


Figure 7. Output Voltage vs. Minimum Input Voltage

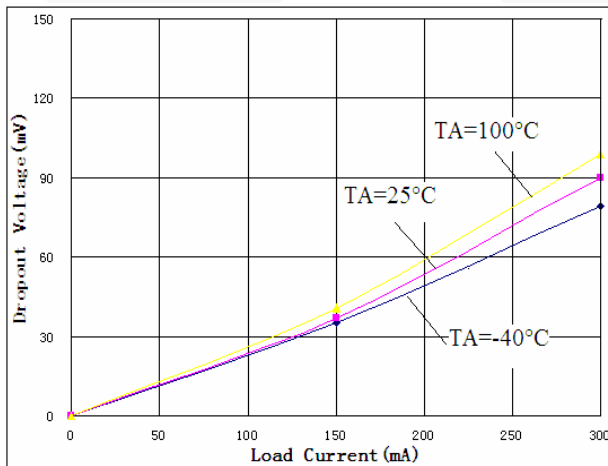


Figure 8. Dropout Voltage

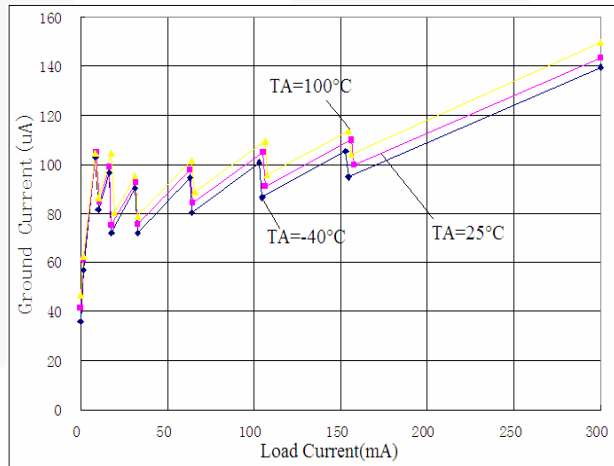


Figure 9. Ground Current vs. Load Current

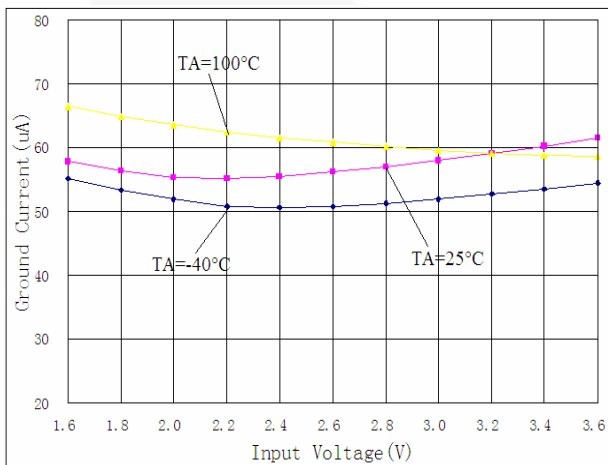


Figure 10. Ground Current vs. V_{IN} , $I_{LOAD} = 1mA$

Typical Performance Characteristics

Unless otherwise noted, $V_{IN} = V_{OUT(Nominal)} + 0.5V$ or $1.8V$ (whichever is greater), $V_{OUT} = 1.2V$, $C_{IN} = 1\mu F$, $C_{OUT} = 4.7\mu F$, and $T_A = 25^\circ C$.

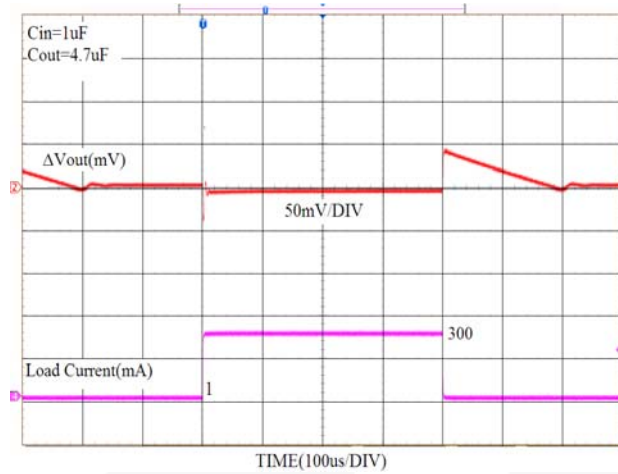


Figure 11. Load Transient, $V_{OUT} = 1.2V$

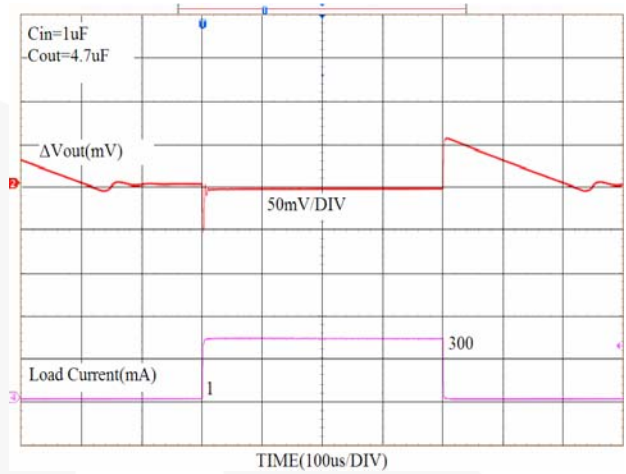


Figure 12. Load Transient, $V_{OUT} = 2.8V$

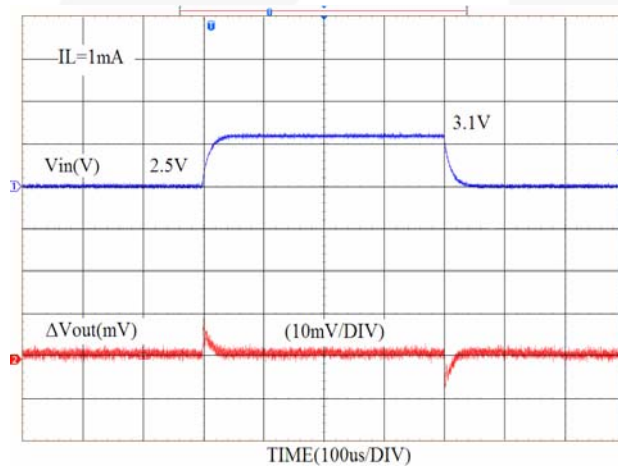


Figure 13. Line Transient, $I_{LOAD} = 1mA$

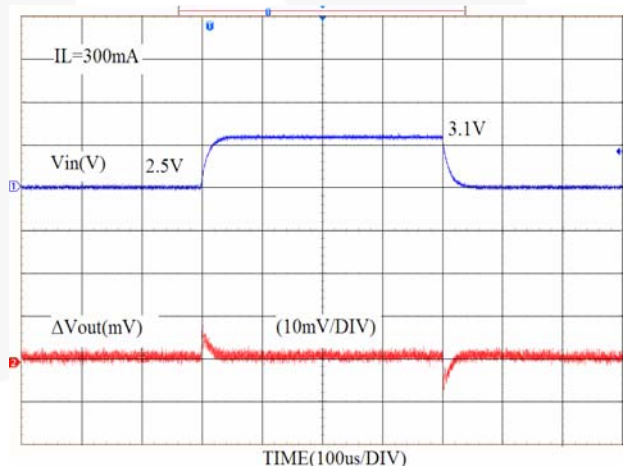


Figure 14. Line Transient, $I_{LOAD} = 300mA$

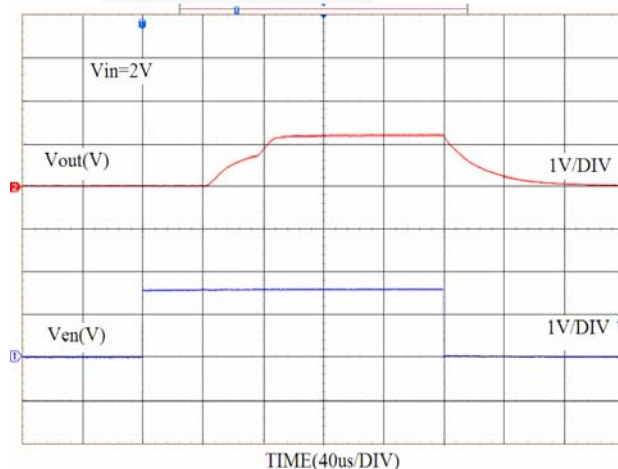


Figure 15. Enable Characteristics

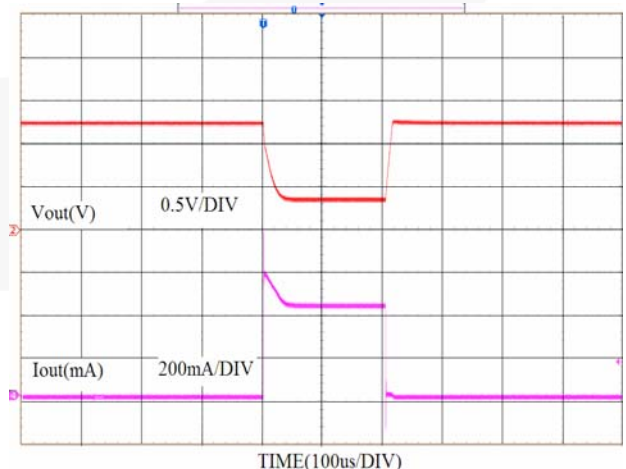


Figure 16. Short Circuit Current

Typical Performance Characteristics

Unless otherwise noted, $V_{IN} = V_{OUT(Nominal)} + 0.5V$ or $1.8V$ (whichever is greater), $V_{OUT} = 1.2V$, $C_{IN} = 1\mu F$, $C_{OUT} = 4.7\mu F$, and $T_A = 25^\circ C$.

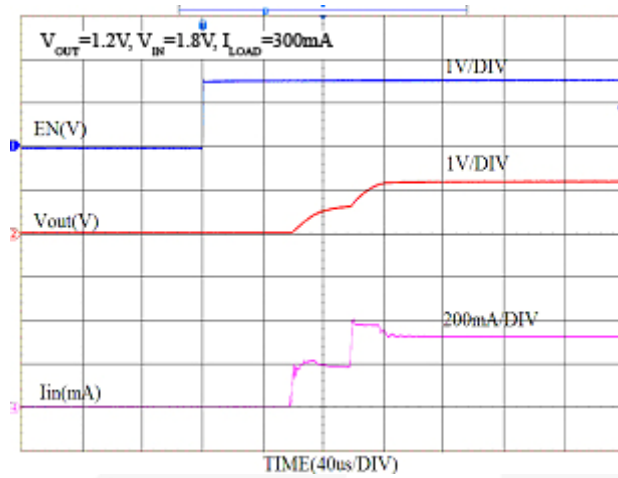


Figure 17. Inrush Current

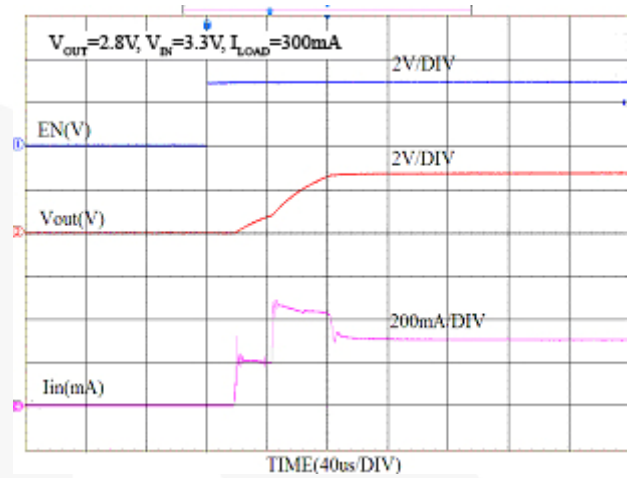


Figure 18. Inrush Current

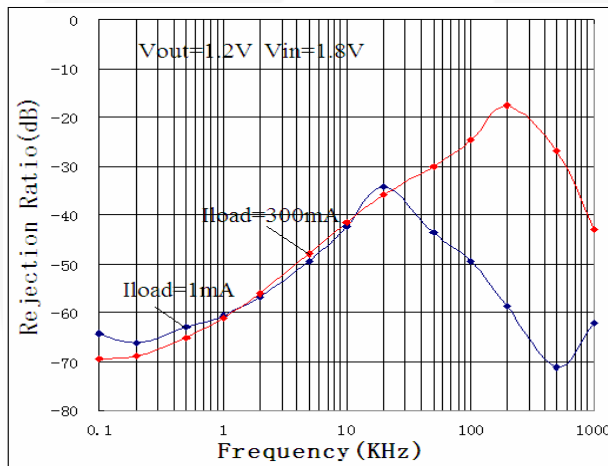


Figure 19. Power Supply Rejection Ratio

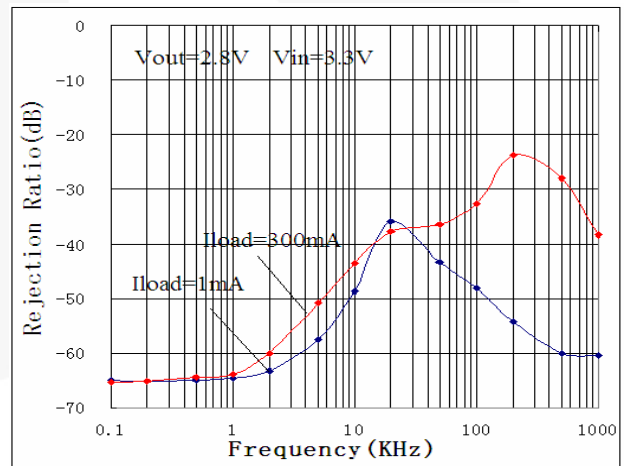


Figure 20. Power Supply Rejection Ratio

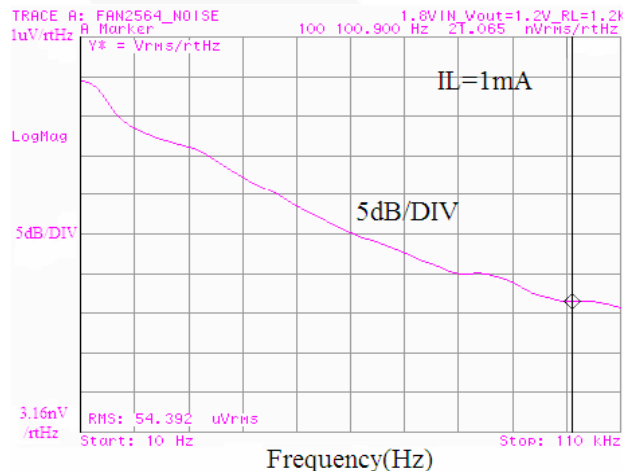


Figure 21. Noise Density

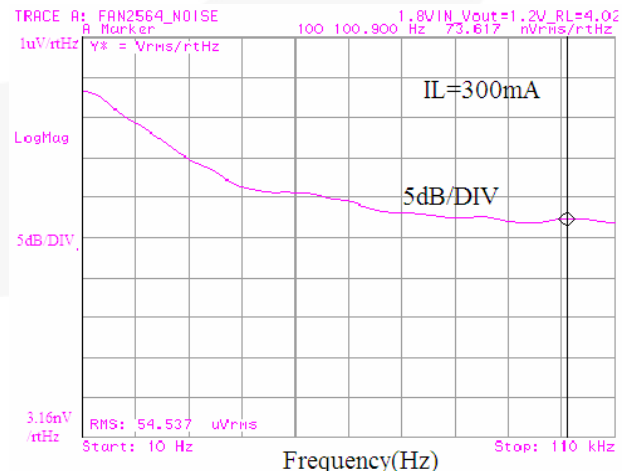


Figure 22. Noise Density

Application Information

Enable and Soft Start

A 1.4 MΩ pull-down resistor ensures the EN pin to be in LOW state when it is floating. The chip is in shut-down mode when EN pin is LOW.

To enable the chip, the EN pin needs to be raised higher than 0.95V. The output pin starts to charge up to the final voltage. On-chip soft-start circuitry limits the peak inrush current through VIN pin to less than the specified typical value of 500mA, regardless of C_{OUT} value and load conditions.

The startup time increases as V_{OUT}, C_{OUT}, and load increases, but meets the specified 100μs under the worst load and V_{OUT} conditions.

Short-Circuit and Thermal Protection

The output current is short-circuit protected. When a short-circuit fault occurs, the output current is automatically limited and V_{OUT} drops, depending on the actual short-circuit resistance.

Short-circuit fault or output overload may cause the die temperature to increase and exceed maximum ratings due to power dissipation. In such cases, depending upon the ambient temperature; V_{IN}, load current, and the junction-to-air thermal resistance (θ_{JA}) of the die; the device may enter thermal shutdown.

When the die temperature exceeds the shutdown limit temperature, the onboard thermal protection disables the output until the temperature drops below its hysteresis value, at which point the output is re-enabled and a new soft-start sequence occurs as described above.

Thermal Considerations

For best performance, the die temperature and the power dissipated should be kept at moderate values. The maximum power dissipated can be evaluated based on the following relationship:

$$P_{D(max)} = \left\{ \frac{T_{J(max)} - T_A}{\Theta_{JA}} \right\} \quad (1)$$

where T_{J(max)} is the maximum allowable junction temperature of the die and T_A is the ambient operating temperature. θ_{JA} is dependent on the surrounding PCB layout and can be improved by providing a heat sink of surrounding copper ground.

The addition of backside copper with through-holes, stiffeners, and other enhancements can also aid in reducing θ_{JA}. The heat contributed by the dissipation of other devices located nearby must be included in design considerations.

Capacitors Selection

The FAN2564 is stable with a wide range of capacitor values and sizes.

For loop stability, a 1μF input capacitor or bigger is recommended. Tolerance, temperature, and voltage coefficients of the capacitor must be considered to ensure effective capacitance stays around 1μF or above. There is no special requirement on its ESR value.

An output capacitor with an effective capacitance between 1μF and 10μF is required for loop stability. The ESR value should be within 5 to 100mΩ. 2.2μF or 4.7μF ceramic capacitors are recommended to ensure stability over the full temperature, input, and output voltage range of operation, such as those listed in Table 1.

Table 1. Recommended Capacitors

| Capacitance | Size | Vendor | Part Number |
|-------------|------|--------|--------------------|
| 1μF | 0603 | MURATA | GRM188R71C105KA120 |
| 2.2μF | 0603 | MURATA | GRM188R61A225KF340 |
| 2.2μF | 0402 | MURATA | GRM155R60J225ME15 |
| 4.7μF | 0603 | MURATA | GRM188C80G475KE19 |
| 4.7μF | 0402 | MURATA | GRM155R60G475M |

Layout Considerations

C_{IN} and C_{OUT} should be placed close to the device for optimal transient response and device behavior. A dedicated ground plane is recommended for proper GND connection.

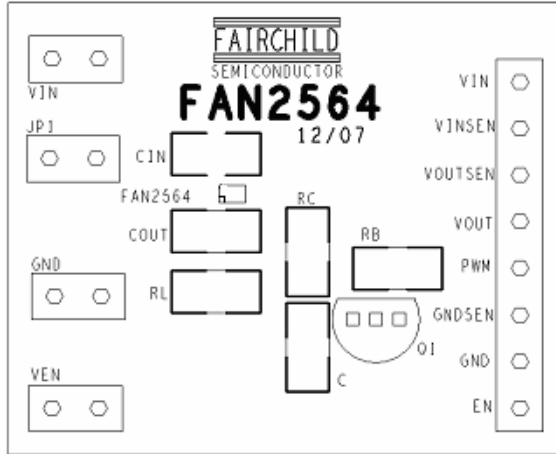


Figure 23. Assembly Diagram

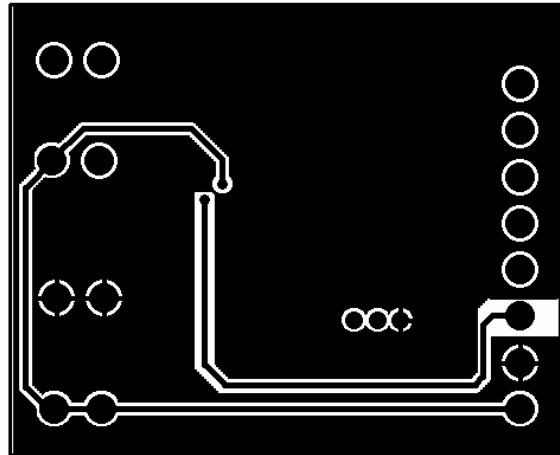


Figure 25. Bottom Layer

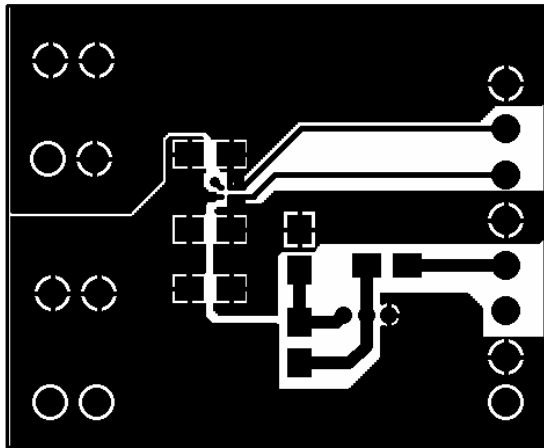


Figure 24. Top Layer



Physical Dimensions

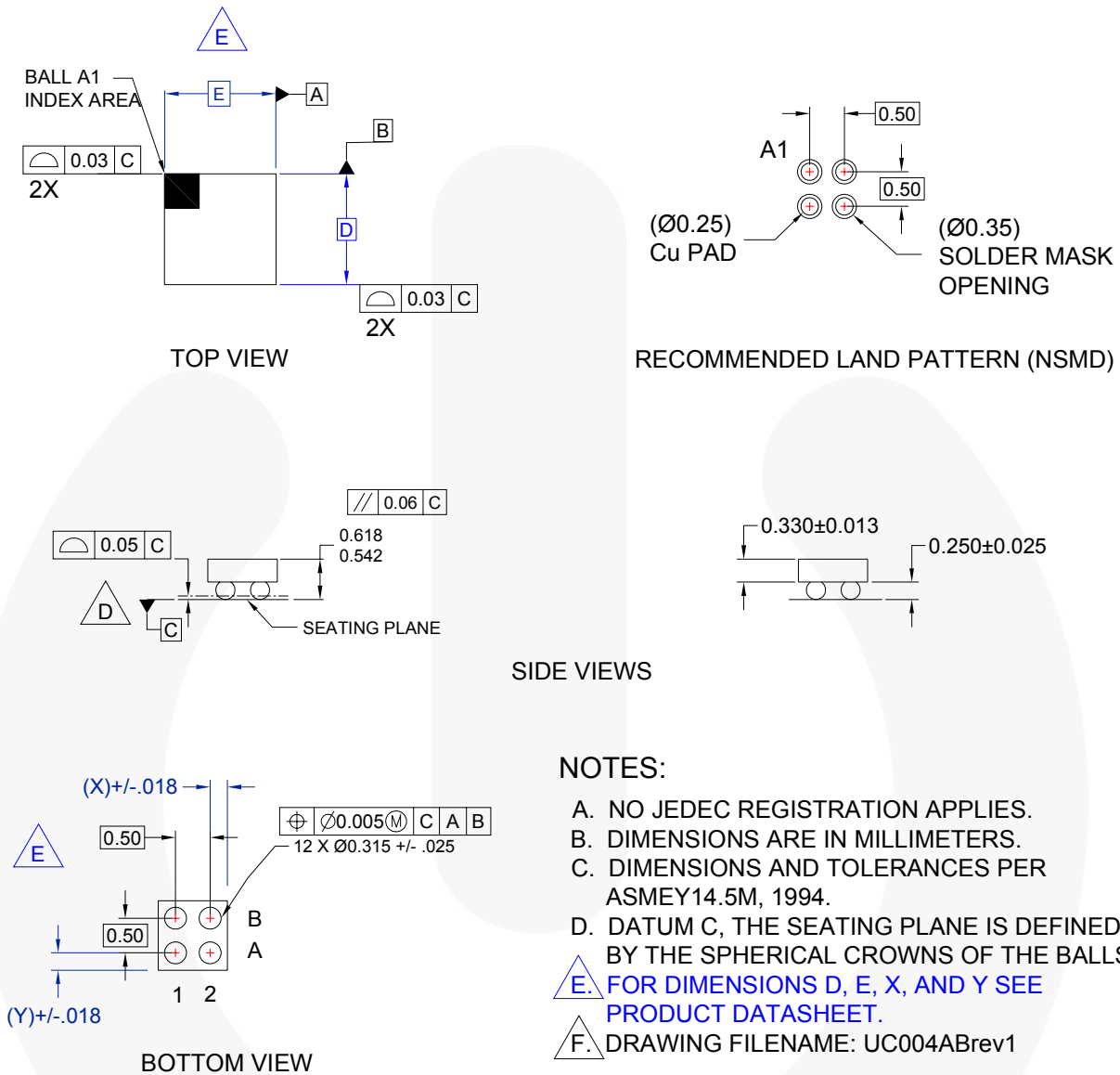


Figure 26. 4-Bump, Wafer-Level Chip-Scale Package (WLCSP), 0.5mm Pitch

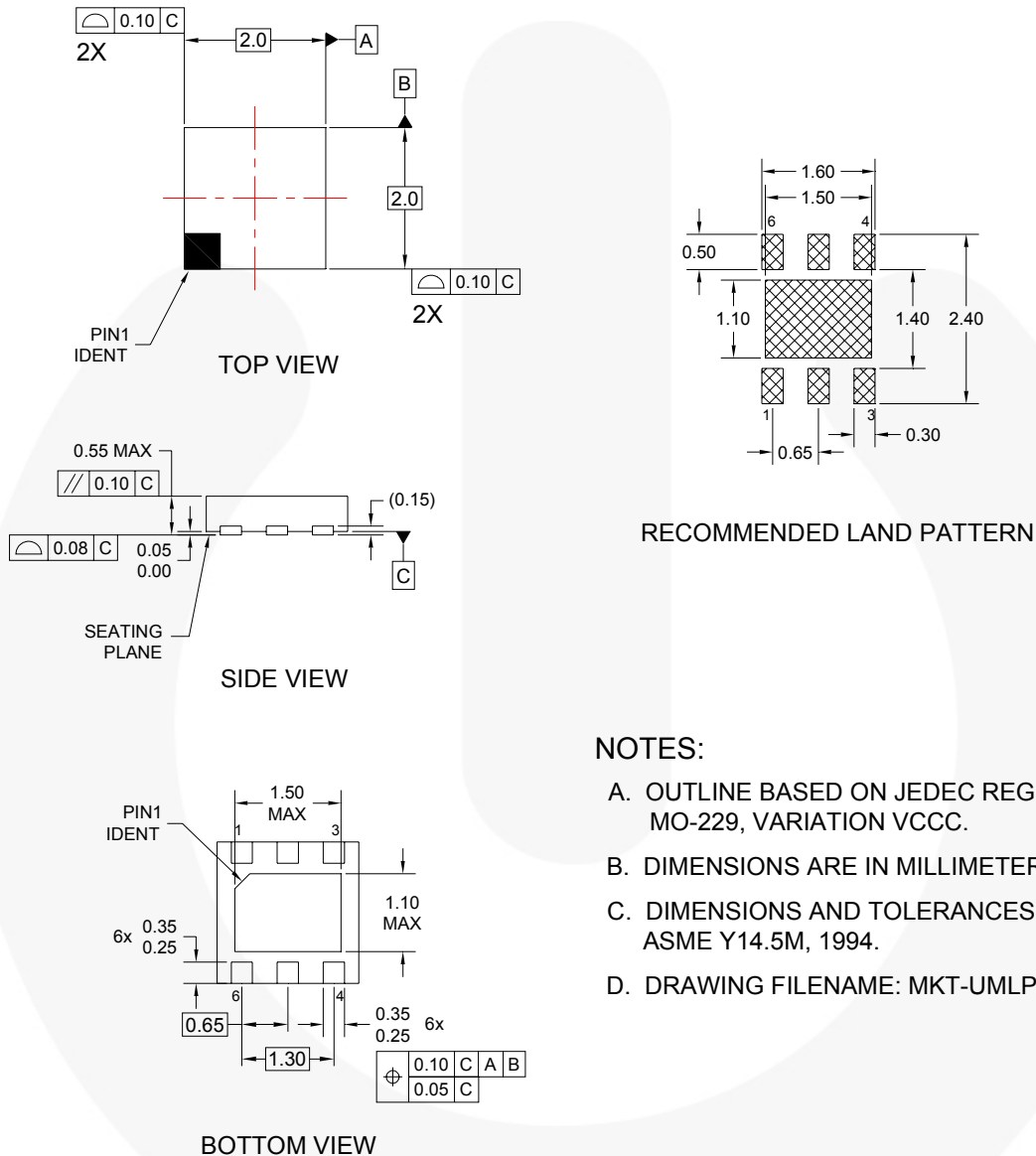
Product Specific Dimensions

| Product | D | E | X | Y |
|------------|---------------|---------------|-------|-------|
| FAN2564UCX | 1.41 +/-0.030 | 0.93 +/-0.030 | 0.215 | 0.455 |

Package drawings are provided as a service to customers considering Fairchild components. Drawings may change in any manner without notice. Please note the revision and/or date on the drawing and contact a Fairchild Semiconductor representative to verify or obtain the most recent revision. Package specifications do not expand the terms of Fairchild's worldwide terms and conditions, specifically the warranty therein, which covers Fairchild products.

Always visit Fairchild Semiconductor's online packaging area for the most recent package drawings:
<http://www.fairchildsemi.com/packaging/>.

Physical Dimensions



NOTES:

- OUTLINE BASED ON JEDEC REGISTRATION MO-229, VARIATION VCCC.
- DIMENSIONS ARE IN MILLIMETERS.
- DIMENSIONS AND TOLERANCES PER ASME Y14.5M, 1994.
- DRAWING FILENAME: MKT-UMLP06Crev1

Figure 27. 6-Pin, Ultrathin Molded Leadless Package (UMLP)

Package drawings are provided as a service to customers considering Fairchild components. Drawings may change in any manner without notice. Please note the revision and/or date on the drawing and contact a Fairchild Semiconductor representative to verify or obtain the most recent revision. Package specifications do not expand the terms of Fairchild's worldwide terms and conditions, specifically the warranty therein, which covers Fairchild products.

Always visit Fairchild Semiconductor's online packaging area for the most recent package drawings:
<http://www.fairchildsemi.com/packaging/>.



TRADEMARKS

The following includes registered and unregistered trademarks and service marks, owned by Fairchild Semiconductor and/or its global subsidiaries, and is not intended to be an exhaustive list of all such trademarks.

- | | | | |
|--------------------------|--------------------------|--------------------------------------|--|
| Build it Now™ | FRFET® | Programmable Active Droop™ | |
| CorePLUS™ | Global Power Resource SM | QFET® | |
| CorePOWER™ | Green FPST™ | QST™ | |
| CROSSVOLT™ | Green FPST™ e-Series™ | Quiet Series™ | |
| CTL™ | GTO™ | RapidConfigure™ | |
| Current Transfer Logic™ | IntelliMAX™ | ™ | |
| EcoSPARK® | ISOPLANAR™ | Saving our world, 1mW/W/W at a time™ | |
| EfficientMax™ | MegaBuck™ | SmartMax™ | |
| EZSWITCH™ * | MICROCOUPLER™ | SMART START™ | |
| ™ | MicroFET™ | SPM® | |
| ™ | MicroPak™ | STEALTH™ | |
| Fairchild® | MillerDrive™ | SuperFET™ | |
| Fairchild Semiconductor® | MotionMax™ | SuperSOT™.3 | |
| FACT Quiet Series™ | Motion-SPM™ | SuperSOT™.6 | |
| FACT® | OPTOLOGIC® | SuperSOT™.8 | |
| FAST® | OPTOPLANAR® | SupreMOS™ | |
| FastvCore™ | ™ | SyncFET™ | |
| FlashWriter® * | PDP SPM™ | ™ | |
| FPST™ | Power-SPM™ | The Power Franchise® | |
| F-PFST™ | PowerTrench® | | |
| | PowerXS™ | | |

* EZSWITCH™ and FlashWriter® are trademarks of System General Corporation, used under license by Fairchild Semiconductor.

DISCLAIMER

FAIRCHILD SEMICONDUCTOR RESERVES THE RIGHT TO MAKE CHANGES WITHOUT FURTHER NOTICE TO ANY PRODUCTS HEREIN TO IMPROVE RELIABILITY, FUNCTION, OR DESIGN. FAIRCHILD DOES NOT ASSUME ANY LIABILITY ARISING OUT OF THE APPLICATION OR USE OF ANY PRODUCT OR CIRCUIT DESCRIBED HEREIN; NEITHER DOES IT CONVEY ANY LICENSE UNDER ITS PATENT RIGHTS, NOR THE RIGHTS OF OTHERS. THESE SPECIFICATIONS DO NOT EXPAND THE TERMS OF FAIRCHILD'S WORLDWIDE TERMS AND CONDITIONS, SPECIFICALLY THE WARRANTY THEREIN, WHICH COVERS THESE PRODUCTS.

LIFE SUPPORT POLICY

FAIRCHILD'S PRODUCTS ARE NOT AUTHORIZED FOR USE AS CRITICAL COMPONENTS IN LIFE SUPPORT DEVICES OR SYSTEMS WITHOUT THE EXPRESS WRITTEN APPROVAL OF FAIRCHILD SEMICONDUCTOR CORPORATION.

As used herein:

1. Life support devices or systems are devices or systems which, (a) are intended for surgical implant into the body or (b) support or sustain life, and (c) whose failure to perform when properly used in accordance with instructions for use provided in the labeling, can be reasonably expected to result in a significant injury of the user.
2. A critical component in any component of a life support, device, or system whose failure to perform can be reasonably expected to cause the failure of the life support device or system, or to affect its safety or effectiveness.

ANTI-COUNTERFEITING POLICY

Fairchild Semiconductor Corporation's Anti-Counterfeiting Policy. Fairchild's Anti-Counterfeiting Policy is also stated on our external website, www.fairchildsemi.com, under Sales Support.

Counterfeiting of semiconductor parts is a growing problem in the industry. All manufacturers of semiconductor products are experiencing counterfeiting of their parts. Customers who inadvertently purchase counterfeit parts experience many problems such as loss of brand reputation, substandard performance, failed applications, and increased cost of production and manufacturing delays. Fairchild is taking strong measures to protect ourselves and our customers from the proliferation of counterfeit parts. Fairchild strongly encourages customers to purchase Fairchild parts either directly from Fairchild or from Authorized Fairchild Distributors who are listed by country on our web page cited above. Products customers buy either from Fairchild directly or from Authorized Fairchild Distributors are genuine parts, have full traceability, meet Fairchild's quality standards for handling and storage and provide access to Fairchild's full range of up-to-date technical and product information. Fairchild and our Authorized Distributors will stand behind all warranties and will appropriately address any warranty issues that may arise. Fairchild will not provide any warranty coverage or other assistance for parts bought from Unauthorized Sources. Fairchild is committed to combat this global problem and encourage our customers to do their part in stopping this practice by buying direct or from authorized distributors.

PRODUCT STATUS DEFINITIONS

Definition of Terms

| Datasheet Identification | Product Status | Definition |
|--------------------------|-----------------------|---|
| Advance Information | Formative / In Design | Datasheet contains the design specifications for product development. Specifications may change in any manner without notice. |
| Preliminary | First Production | Datasheet contains preliminary data; supplementary data will be published at a later date. Fairchild Semiconductor reserves the right to make changes at any time without notice to improve design. |
| No Identification Needed | Full Production | Datasheet contains final specifications. Fairchild Semiconductor reserves the right to make changes at any time without notice to improve the design. |
| Obsolete | Not In Production | Datasheet contains specifications on a product that is discontinued by Fairchild Semiconductor. The datasheet is for reference information only. |

Rev. 138