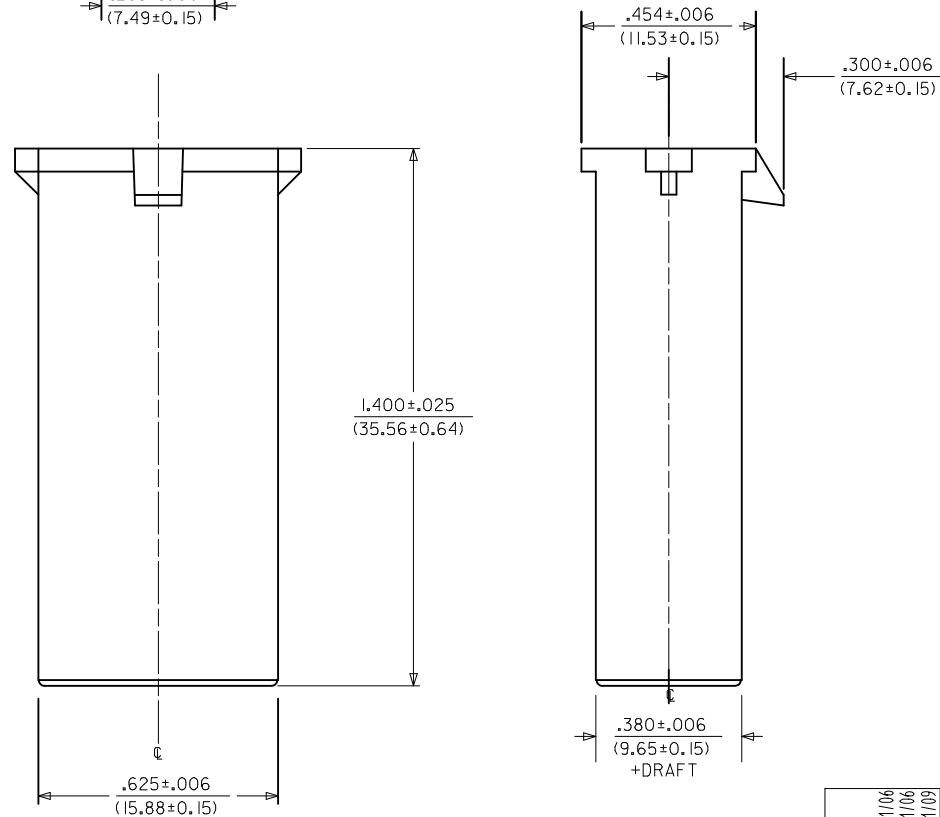
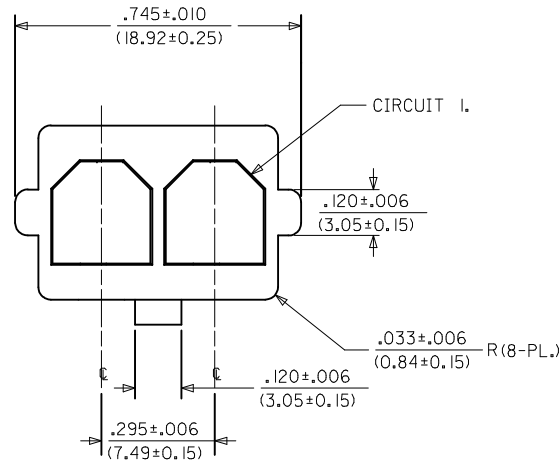


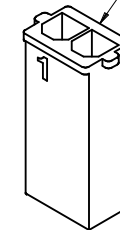
ITEM	NUMBER	MATERIAL	COLOR
	43680-2002	UL94V-0 NYLON	BLACK
	43680-1002	UL94V-2 NYLON	NATURAL (TRANSLUCENT)
	43680-3002	UL94V-2 NYLON, IEC 60335-1, GLOW WIRE CAPABLE	BLACK

NOTES:

1. MATERIAL: SEE CHART.
2. FINISH: NONE.
3. PRODUCT SPECIFICATION: PS-44441-9999.
4. PACKAGING: PK-43680-001.
5. THIS CONNECTOR HOUSING FOR USE WITH 43178-**** TERMINALS.
6. THIS CONNECTOR HOUSING WILL MATE TO 43335-***2, 43179-***2 AND 44441-***2 HOUSINGS.
7. PARTS CONFORM TO CLASS B REQUIREMENTS OF COSMETIC SPEC PS-45499-002.
- SOME PARTS MAY HAVE A BLEMISH NEAR THE GATE THAT DOES NOT AFFECT FUNCTIONALITY.



LOCKING NUB IS LOCATED HERE



43680-*002
(NO SCALE)

GATE BLEMISH EC NO: UCP2015-2359 DRWN: DFOX 2015/01/06 CHK: BANDERSON 2015/01/06 APPR: FSMITH 2015/01/09	DESCRIPTION REV E1	QUALITY SYMBOLS <div>▽=0</div> <div>▽=0</div> <div>▽=0</div>	GENERAL TOLERANCES (UNLESS SPECIFIED)		DIMENSION STYLE IN/MM		SCALE 4:1	DESIGN UNITS INCH	THIRD ANGLE PROJECTION
				mm	INCH	DRAWN BY CM	DATE 03/22/1996	TITLE 2-CIR. PLUG HOUSING .125/(3.18)X.020(1.51) SABRE - TPA molex	
			4 PLACES ± ---	± ---	CHECKED BY KBP	DATE 03/22/1998			
			3 PLACES ± ---	± .010	APPROVED BY FSMITH	DATE 2015/01/09			
			2 PLACES ± 0.25	± .014	MATERIAL NO.	DOCUMENT NO.			
			1 PLACE ± 0.35	± ---	SEE CHART	SD-43680-*002			
			0 PLACE ± ---	± ---	DRAFT WHERE APPLICABLE MUST REMAIN WITHIN DIMENSIONS		SHEET NO. 1 OF 1		
			ANGULAR ±1/2°		SIZE C		THIS DRAWING CONTAINS INFORMATION THAT IS PROPRIETARY TO MOLEX INCORPORATED AND SHOULD NOT BE USED WITHOUT WRITTEN PERMISSION		