

Fuseholders

For Micro™ Fuse or Pico® II Fuses

RoHS "Push-On" Retaining Nut Chassis Mount Type

QPL

Fuseholder will accept Littelfuse MICRO™ fuses and PICO® II fuses (rated to 5 amperes) with .025" diameter leads.

SPECIFICATIONS:

Electrical: Rated at 5 amperes for any voltage up to 125 volts.

Mounting: Maximum panel thickness is .09".

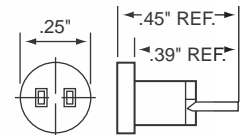
Molded Parts: Black Thermoset.

Terminals: Beryllium Copper, Silver-plated.

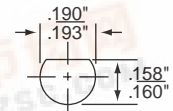
Ambient Temperature: -40°C to +125°C.

Hardware: "Push-On" retaining nut.

* Please refer to Fuseology section for information on proper fuseholder de-rating.



MOUNTING HOLE



FOR MICRO™ FUSE OR PICO® II FUSES

RoHS Vertical/Horizontal P.C. Board Mount Type

Fuseholder will accept Littelfuse MICRO™ fuses and PICO® II fuses (rated to 5 amperes) with .025" diameter leads.

SPECIFICATIONS:

Electrical: Rated at 5 amperes for any voltage up to 125 volts.

Molded Parts: White Thermoplastic.

Terminals: Copper Alloy.

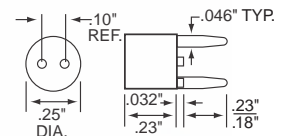
Ambient Temperature: -40°C to +100°C.

ORDERING INFORMATION:

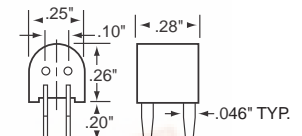
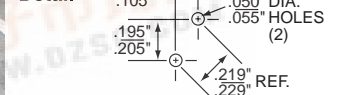
| Catalog Number | Terminal Plating | Mounting |
|----------------|---------------------|------------|
| 281 005 | Silver ¹ | Vertical |
| 281 008 | Tin | Vertical |
| 281 007 | Silver ¹ | Horizontal |
| 281 010 | Tin | Horizontal |

¹UL Recognized.

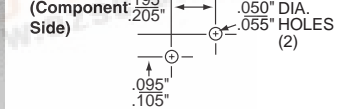
* Please refer to Fuseology section for information on proper fuseholder de-rating.



Circuit Board Mounting Detail



Circuit Board Mounting Detail (Component Side)



RoHS For LT-5™ and TRS® Fuses P.C. Board Mount Type

Fuse holder will accept Littelfuse LT-5™ and TRS® fuses up to 5 amperes.

SPECIFICATIONS:

Electrical: Rated at 5 amperes for any voltage up to 250 volts.

Molded Parts: Black Thermoplastic (UL 94VO).

Terminals: Tin-plated brass, gold inside.

ORDERING INFORMATION:

Catalog Number: 02800050

* Please refer to Fuseology section for information on proper fuseholder de-rating.

