

300 VOLT
UL STYLE 20184
RoHS COMPLIANT

FLAT CABLE

COLOR-CODED, TWIST-TO-FLAT CABLE

0.050" CENTERS

COLOR-CODED, TWIST-TO-FLAT CABLE APPLICATIONS:

- Easy Termination to 0.050" IDC Connectors
- For Situations Where Reduced Crosstalk is Necessary such as High Speed Data Transmissions in Computers, Cash Registers and Communications Equipment

CHARACTERISTICS

OPERATING TEMPERATURE:

- -20°C to 105°C

VOLTAGE RATING:

- 300 Volt

COLOR DESCRIPTION:

- Color Code: Brown, Red, Orange, Yellow, Green, Blue, Violet, Gray, White, Black, Tan (common), Repeats After 10 Conductors

PRODUCT DESCRIPTION:

- Conductor: Stranded Tinned Copper Conductors on 0.050" (1,27mm) Centers
- Insulation: PVC
- 0.007" Laminated Film for Stability
- Twisted Lengths: 18"
- Flat Lengths: 2"

SPECIFICATIONS

- Capacitance: 21 pF/ft (69 pF/m) Nom.
- Propagation Delay: 1.56 ns/ft (5,12m) 10 ns Rise Time Pulse
- Impedance: 100 Ohms Nom.
- Crosstalk: Nom. Between 2 Adjacent Signal Lines at 1 ns Rise Time Over 10 ft (3,05m) Length, Near End: 3.8%; Far End: 1.5%
- UL AWM Style 20184
- RoHS Compliant



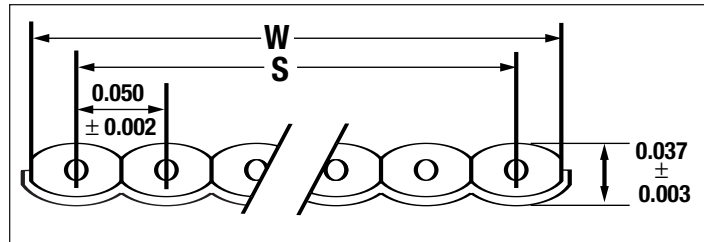
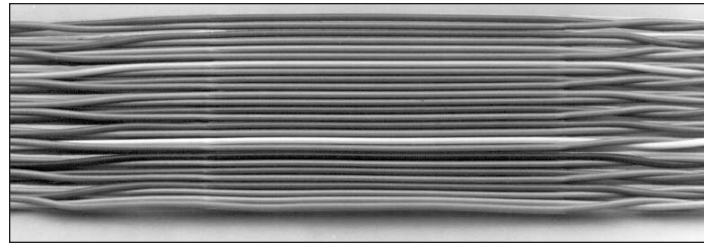
Recognized Component
 Underwriters Laboratories Inc.



Passes
 UL VW-1 Flame Test
 Underwriters Laboratories Inc.



RoHS
 Compliant



28 AWG (0,09mm²), 7/36 (7x0,13mm), Insulation Thickness: 0.010" (0,25mm)

Alpha Part No.	No. of Conductors (Pairs)	Nominal Overall Width (W) Inches	Nominal Overall Width (W) mm	Nominal Span (S) Inches	Nominal Span (S) mm
3586/26	26 (13)	1.300 ± 0.015	33,0 ± 0,38	1.250 ± 0.011	31,75 ± 0,28
3586/40	40 (20)	2.000 ± 0.020	50,8 ± 0,51	1.950 ± 0.015	49,53 ± 0,38
3586/50	50 (25)	2.500 ± 0.020	63,5 ± 0,51	2.450 ± 0.015	62,23 ± 0,38
3586/60	60 (30)	3.000 ± 0.020	76,2 ± 0,51	2.950 ± 0.015	74,93 ± 0,38

AVAILABILITY

- 100 ft (30,5m) put-ups, may contain multiple lengths

Web Site: www.alphawire.com
 Email: info@alphawire.com

Toll Free: 1-800-52 ALPHA • Telephone: 908-925-8000 • Fax: 908-925-6923
 Europe/UK Telephone: +44 (0) 1932 772422 • Europe/UK Fax: +44 (0) 1932 772433



337