

AYA Series



UL Recognized



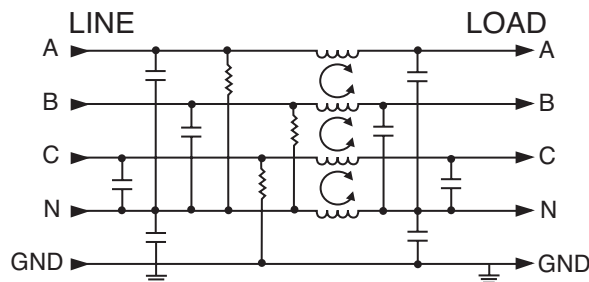
AYA6A

AYA Series

The AYA series filters are designed for 3-phase, four-wire, WYE wiring applications. These cost-effective filters help better protect electronic equipment in industrial applications.

The series offers filtering up to 63 amps maximum and is used in 3-phase, industrial applications such as uninterruptible power supplies and industrial control systems. The AYA series is designed to comply with current international standards.

Electrical Schematic



Specifications

Maximum leakage current, each line-to-ground

@ 120 VAC 60Hz	1.62mA
@ 250 VAC 50 Hz	2.82mA

Hipot rating (one minute):

line-to-ground	1500 VAC
line-to-line	1450 VDC

Operating frequency:

50/60 Hz

Operating voltage (max.):

440 VAC

Rated current:

16AYA6-A	16A
25AYA6-A	25A
36AYA6-A	36A
50AYA6-A	50A

Typical insertion loss in dB:

Line-to-ground in 50 ohm circuit

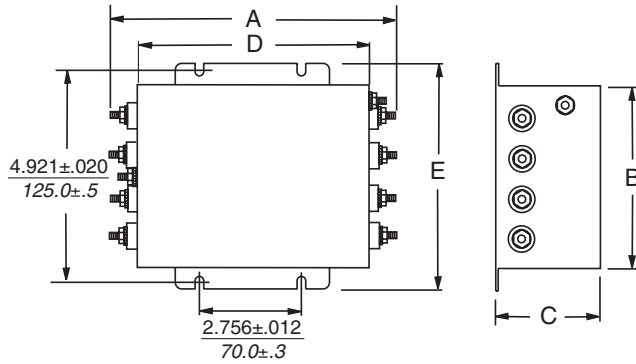
Current Rating	Frequency-MHz							
	.01	.05	.1	.5	1	5	10	30
16A	2	11	19	52	53	70	61	30
25A	2	12	19	46	49	64	54	27
36A	1	10	18	49	54	63	57	32
50A	1	8	14	43	47	63	53	29

Line-to-line in 50 ohm circuit

Current Rating	Frequency-MHz							
	.01	.05	.1	.5	1	5	10	30
16A	14	31	30	82	87	76	77	47
25A	20	36	38	85	81	68	69	33
36A	20	39	36	86	78	65	62	35
50A	20	30	38	85	82	67	66	38

AYA Series

Case Style



Terminals:

16/25:	8-32 (8)
Torque (Max.):	14 in.lb.
36:	10-32 (8)
Torque (Max.):	18 in.lb.
50:	1/4-20 (8)
Torque (Max.):	56 in.lb. ± 2 in.lb.

Case Dimensions

Part No.	A (max)	B (max)	C (max)	D (max)	E (max)
16/25	7.91	4.37	1.97	5.94	5.51
	201.0	111.0	50.0	151.0	140.0
36/50	7.91	4.37	2.56	5.94	5.51
	201.0	111.0	65.0	151.0	140.0

Part Numbers

- 16AYA6A
- 25AYA6A
- 36AYA6A
- 50AYA6A

Revised Since Last Printing