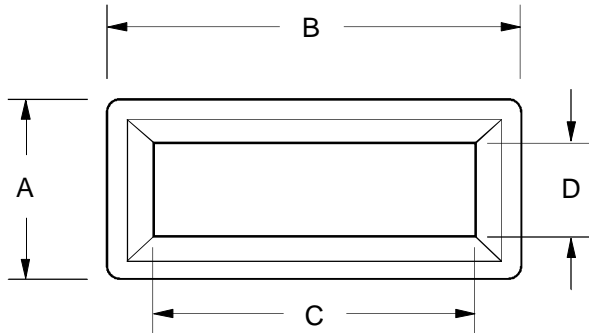


DMS Accessories Panel-Mounting Hardware

Purchase on-line at www.datel.com

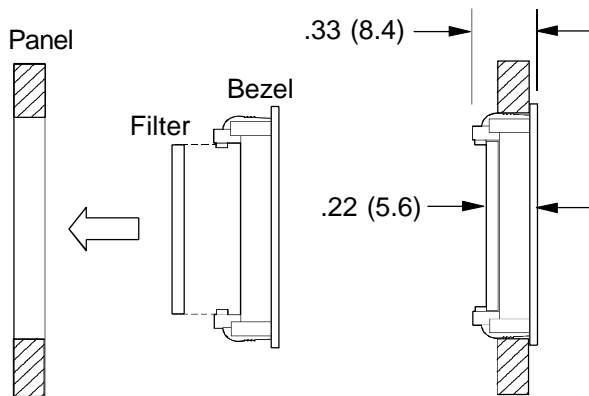
Snap-In Bezels for DMS-20PC/30PC/40PC Red LED Meters



Description: DATEL part numbers 39-2359620 (for DMS-30PC and DMS-40PC red LED meters) and 39-2359621 (for DMS-20PC red LED meters) can be used when DMS meters are mounted on a pc-board which is situated behind a panel. Both bezels are made of black ABS plastic and easily snap into appropriately-sized cutouts (see chart for cutout dimensions) in metal panels whose thickness is between 0.040"(1.0mm) and 0.125"(3.2mm).

Both bezels come with a snap-in, 0.030"(0.8mm) thick, red acrylic lens which provides excellent on/off contrast. For optimum digit clarity, the spacing between the meter's front surface and the lens should be less than 0.200"(5.1mm). See application Note 16 for more information on behind-the-panel mounting.

Bezel and Filter Installation



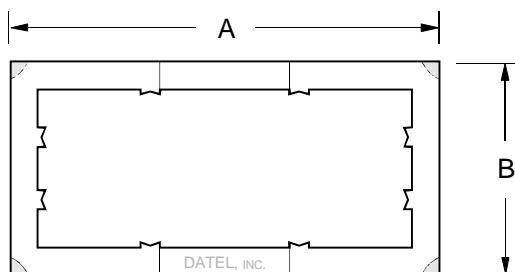
| Bezel Dimensions | A | B | C | D |
|-----------------------------|-----------------|-----------------|-----------------|-----------------|
| 39-2359621 DMS-20PC | 1.343 (34.1) | 1.906 (48.4) | 1.375 (34.9) | 0.812 (20.6) |
| 39-2359620 DMS-30PC/40PC | 1.343 (34.1) | 2.531 (64.3) | 2.0 (50.8) | 0.812 (20.6) |
| Cutout Dimensions | | | Height | Width |
| 39-2359621 DMS-20PC | | | 1.156 (29.4) | 1.750 (44.5) |
| 39-2359620 DMS-30PC/40PC | | | 1.156 (29.4) | 2.375 (60.3) |
| Filter Dimensions | | | Height | Width |
| 39-2359621 DMS-20PC | | | .875 (22.2) | 1.437 (36.5) |
| 39-2359620 DMS-30PC/40PC | | | .875 (22.2) | 2.087 (53.0) |

Dimensions: in. (mm)

Tolerances: ± 0.008 (± 0.2)

Filter Material is 0.030" (0.8) thick

Retaining Clips for DMS-20 and DMS-30/40



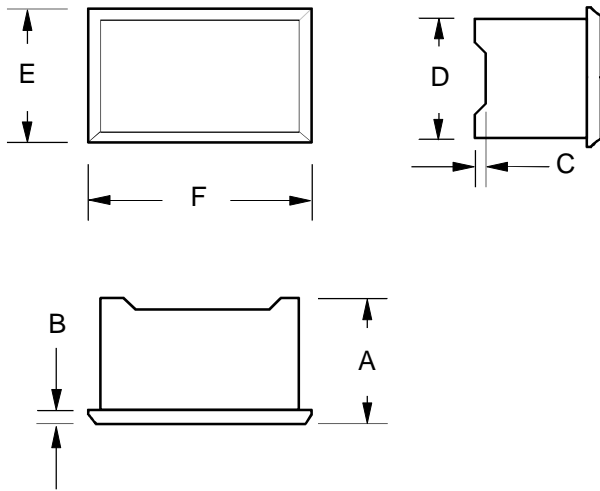
Description: Part numbers 39-2165110 (for all DMS-30/40 meters) and 39-2165105 (for all DMS-20 meters) metal retaining clips can be used as spares for damaged or lost clips and for securing blank cases to panels.

| Clip Dimensions | A | B |
|-------------------------|----------------|----------------|
| 39-2165105 DMS-20 | 1.71 (43.4) | 1.21 (30.7) |
| 39-2165110 DMS-30/40 | 2.50 (63.5) | 1.25 (31.8) |

Dimensions: in. (mm)

Tolerances: ± 0.02 (± 0.5)

Red Cases for DMS-20PC/30PC/40PC Applications



Panel Cutouts: See the Mechanical Specifications section of the DMS-20PC (data sheet number DS-0271) or DMS-30PC (data sheet number DS-0258) Series product data sheets for detailed panel cutout and panel mounting dimensions.

Description: DATEL part numbers 39-2359513 (DMS-30/40PC size) and 39-2359550 (DMS-20PC size) are the same red plastic cases used in DMS-30/40 and DMS-20PC red LED display meters. These "blank" cases can be utilized to cover unused cutouts in multiple-meter applications. They can also be used to achieve a uniform appearance in applications which combine a red LED DMS meter with a user-supplied red LED display. Both cases can be secured to the panel in the same manner as their meter counterparts, that is, with either 39-2165110 (for DMS-30/40's) and 39-2165105 (for DMS-20's) retaining clips, or with DMS-BZL1 (for DMS-30/40's) and DMS-BZL3 (for DMS-20's) bezel assemblies.

Both cases are made from 0.040" (1.0mm) thick red polycarbonate plastic and are supplied with a removable protective film on their front surface which reduces scratching during handling and installation.

| Case Dimensions | A | B | C | D | E | F |
|-------------------|--------|-------|-------|--------|--------|--------|
| 39-2359550 | 0.475 | 0.040 | 0.025 | 0.800 | 0.880 | 1.380 |
| DMS-20PC | (12.1) | (1.0) | (0.6) | (20.3) | (22.4) | (35.1) |
| 39-2359513 | 0.560 | 0.040 | 0.030 | 0.850 | 0.925 | 2.165 |
| DMS-30PC/40PC | (14.1) | (1.0) | (0.8) | (21.6) | (23.5) | (55.0) |

Dimensions: in. (mm)

Tolerances: ± 0.008 (± 0.2)

Cutout Adapter Plates for DMS-20/30/40 Meters

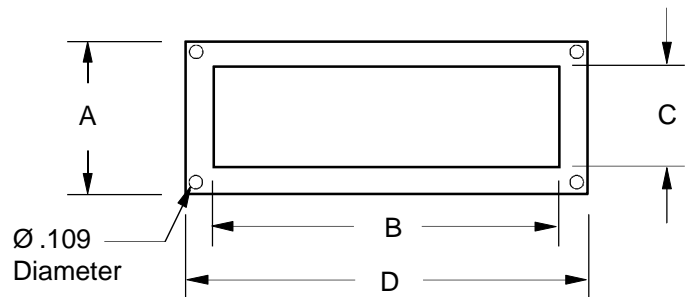
Description: DATEL offers two 0.020" (0.5mm) lexan adapter plates which, when used with DMS-BZL1 or DMS-BZL3 bezel assemblies, can compensate for irregular, less precise panel cutouts. These adapter plates can also be used to compensate for slightly larger cutouts when designing-in DATEL meters as alternate sources. 39-2359622 fits all DMS-30/40 meters and 39-2359623 fits all DMS-20 meters. As shown in the illustrations, the adapter plate is first placed around the meter's case and then the bezel assembly is installed in the normal manner using its factory-supplied hardware.

| Adapter Dimensions | A | B | C | D |
|--------------------|--------|--------|--------|--------|
| 39-2359623 | 1.290 | 1.315 | 0.815 | 1.850 |
| DMS-20 | (32.8) | (33.4) | (20.7) | (47.0) |
| 39-2359622 | 1.290 | 2.110 | 0.870 | 2.570 |
| DMS-30/40 | (32.8) | (53.6) | (22.1) | (65.3) |

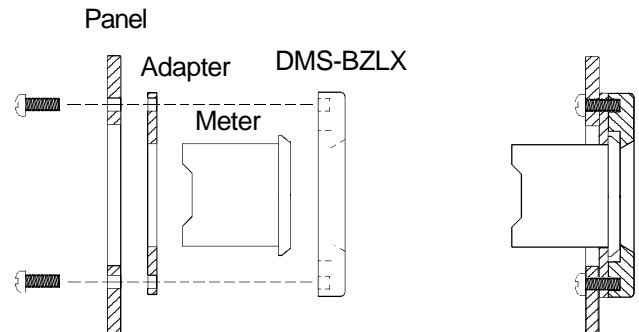
Dimensions: in. (mm)

Tolerances: ± 0.008 (± 0.2)

Adapter Plate is 0.020 (0.5) thick



Adapter Plate Installation



DATEL
INNOVATION and EXCELLENCE

DS-0427A 1/01

DATEL, Inc. 11 Cabot Boulevard, Mansfield, MA 02048-1151
Tel: (508) 339-3000 (800) 233-2765 Fax: (508) 339-6356
Internet: www.datel.com Email: sales@datel.com
Data sheet fax back: (508) 261-2857

DATEL (UK) LTD. Tadley, England Tel: (01256)-880444
DATEL S.A.R.L. Montigny Le Bretonneux, France Tel: 01-34-60-01-01
DATEL GmbH München, Germany Tel: 89-544334-0
DATEL KK Tokyo, Japan Tel: 3-3779-1031, Osaka Tel: 6-354-2025

DATEL makes no representation that the use of its products in the circuits described herein, or the use of other technical information contained herein, will not infringe upon existing or future patent rights. The descriptions contained herein do not imply the granting of licenses to make, use, or sell equipment constructed in accordance therewith. Specifications are subject to change without notice. The DATEL logo is a registered DATEL, Inc. trademark.