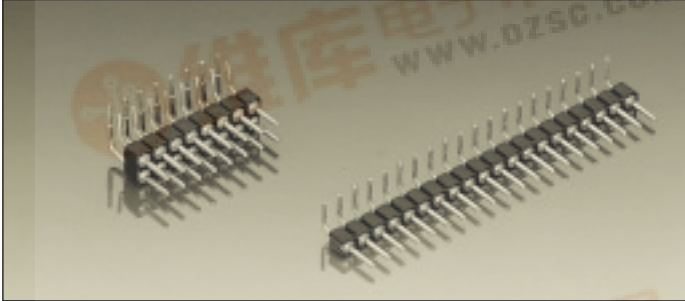


## Series 399 / 499

PCB connectors 2.54 mm

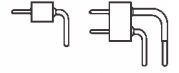
Single row / double row

Solder tail



### Right angle pin connectors, solder tail

Pin connectors with pins  $\varnothing$  0.47 mm



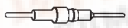


For corresponding connectors see pages 36 to 42 and 47, 48

#### New:

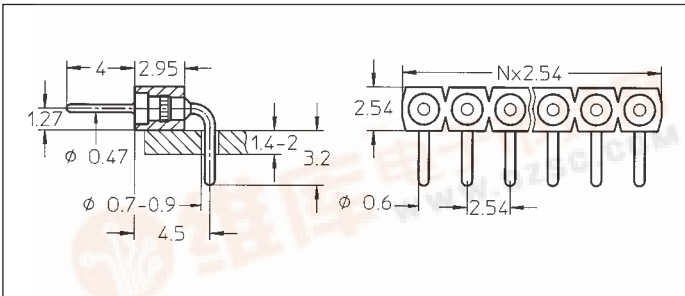
Pin connectors with selective plated precision screw machined pin, plating code Z1.

Connecting side 1: gold plated soldering/PCB side 2: tin plated

Platings	Sleeve 	Clip 	Pin 
10 90 Z1			0,25 $\mu$ m Au 5 $\mu$ m Sn Pb 1: 0,25 $\mu$ m Au 2: 5 $\mu$ m Sn Pb

### Ordering information

Replace **xx** with the number of poles, e.g. 499-93-2**xx**-10-009 for a double row version with 8 pins per row becomes: 499-93-2**16**-10-009



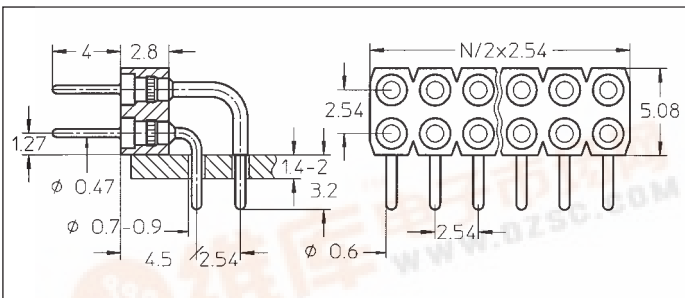
399-10-1xx-10-009

399-90-1xx-10-009

399-Z1-1xx-10-009

Right angle pin connector: single row

Availability from: 1 to 64 contacts  
Standard number of contacts 5, 6, 8, 10, 14, 16, 20, 21, 25, 30, 32, 48, 56, 60, 64



499-10-2xx-10-009

499-90-2xx-10-009

499-Z1-2xx-10-009

Right angle pin connector: double row

Availability from: 4 to 72 contacts  
Standard number of contacts 40, 44, 56, 64, 72