

Switch with IEC Connector Compact Size

# C Series



**UL Recognized  
CSA Certified  
VDE Approved**



## C Series

Two function power entry module combining a DPST switch and an IEC 320 power line connector. Compact packaging allows a smaller panel cutout with choice of snap-in or flange mounting. Available with general purpose filtering (F models - CFS, CFE), medical application filtering (H models - CHS, CHE) or unfiltered (CS, CE). Terminals allow for easy connection to any wiring scheme. Preconnected terminals from line to switch are available (B Models - CBS, CBE) for reducing OEM wiring time.

The medical versions (H models) are designed specifically for health care applications. Their extremely low leakage current allows compliance with UL544 and UL2601 as well as CSA22.2 health care specifications for use with both patient and non-patient care equipment.

## Specifications

### Hipot rating (one minute):

|                |          |
|----------------|----------|
| line-to-ground | 2250 VDC |
| line-to-line   | 1450 VDC |

### Operating frequency:

50/60 Hz

### Rated voltage:

250 VAC

### Rated current:

1-10A @120 VAC  
1-10A @250 VAC

### Operating voltages:

115/230 VAC

### Switch:

Double-insulated rated  
for 10,000 operations  
at full load.  
Amp inrush capability.

### Unfiltered Push-on Force:

18 lb/80 N

### Filtered models only:

Maximum leakage current, each line-to-ground

|          |                  |           |
|----------|------------------|-----------|
| F Models | @ 120 VAC 60 Hz: | .25 mA    |
|          | @ 250 VAC 50 Hz: | .40 mA    |
| H Models | @ 120 VAC 60 Hz: | 2 $\mu$ A |
|          | @ 250 VAC 50 Hz: | 5 $\mu$ A |

### Minimum insertion loss in dB:

Line-to-ground in 50 ohm circuit

| Current Rating  | 0.05 | 0.15 | 0.5 | 1  | 5  | 10 | 30 |
|-----------------|------|------|-----|----|----|----|----|
| <b>F Models</b> |      |      |     |    |    |    |    |
| 1A              | 10   | 26   | 46  | 48 | 46 | 47 | 46 |
| 3A              | 8    | 16   | 32  | 36 | 43 | 48 | 50 |
| 6A              | 4    | 11   | 22  | 27 | 36 | 41 | 50 |
| 10A             | 1    | 4    | 14  | 18 | 27 | 33 | 42 |

Line-to-line in 50 ohm circuit

| Current Rating  | 0.05 | 0.15 | 0.5 | 1  | 5  | 10 | 30 |
|-----------------|------|------|-----|----|----|----|----|
| <b>F Models</b> |      |      |     |    |    |    |    |
| 1A              | 1    | 3    | 13  | 28 | 62 | 67 | 42 |
| 3A              | 2    | 6    | 14  | 23 | 65 | 65 | 67 |
| 6A              | 2    | 6    | 14  | 27 | 46 | 48 | 58 |
| 10A             | 1    | 7    | 14  | 23 | 42 | 44 | 62 |

Line-to-ground in 50 ohm circuit

| Current Rating  | 0.05 | 0.15 | 0.5 | 1  | 5  | 10 | 30 |
|-----------------|------|------|-----|----|----|----|----|
| <b>H Models</b> |      |      |     |    |    |    |    |
| 1A              | 16   | 21   | 37  | 44 | 26 | 21 | 10 |
| 3A              | 9    | 14   | 31  | 32 | 26 | 24 | 14 |
| 6A              | 4    | 10   | 22  | 23 | 19 | 18 | 13 |
| 10A             | 2    | 6    | 10  | 15 | 11 | 11 | 9  |

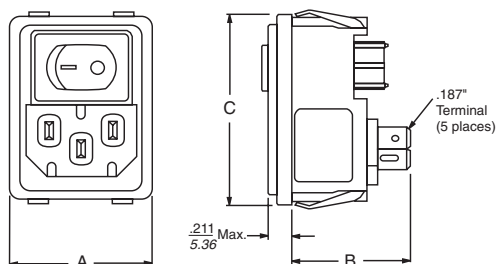
Line-to-line in 50 ohm circuit

| Current Rating  | 0.05 | 0.15 | 0.5 | 1  | 5  | 10 | 30 |
|-----------------|------|------|-----|----|----|----|----|
| <b>H Models</b> |      |      |     |    |    |    |    |
| 1A              | 1    | 6    | 13  | 29 | 38 | 42 | 26 |
| 3A              | 1    | 5    | 10  | 22 | 36 | 34 | 36 |
| 6A              | 1    | 5    | 14  | 20 | 31 | 33 | 37 |
| 10A             | 1    | 4    | 11  | 19 | 32 | 37 | 38 |

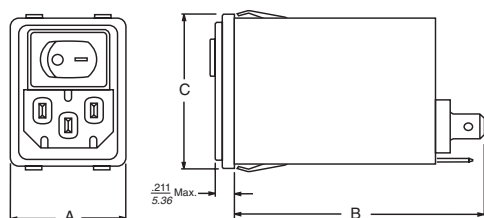
# C Series

## Case Styles

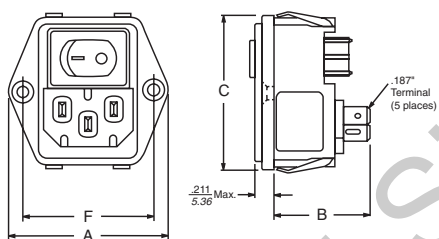
### CS, CBS\*



### CFS, CHS

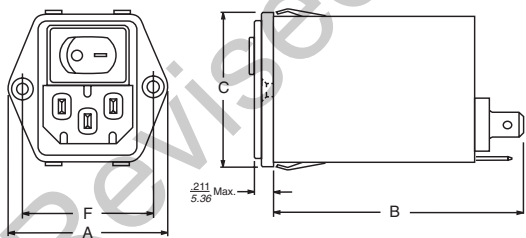


### CE, CBE\*



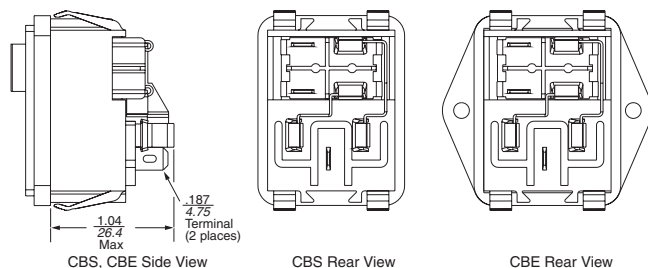
Mounting Holes: .13 [.33] Dia. (2) with .23 Dia. x 90° Counter sunk

### CFE, CHE



Mounting Holes: .13 [.33] Dia. (2) with .23 Dia. x 90° Counter sunk

### \*CBS, CBE Pre-Connected Terminals



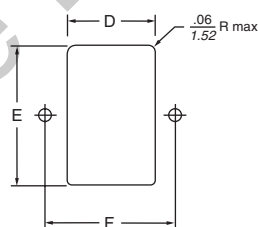
## Case Dimensions

| Part No. | A<br>(max)    | B<br>(max)    | C<br>(max)    | D<br>±.006<br>±.152 | E<br>±.006<br>±.152 | F<br>±.006<br>±.152 |
|----------|---------------|---------------|---------------|---------------------|---------------------|---------------------|
| CS, CBS  | 1.23<br>31.24 | .97<br>24.64  | 1.62<br>41.17 | 1.06<br>26.92       | 1.540<br>39.12      | —                   |
| CE, CBE  | 1.74<br>44.2  | .97<br>24.64  | 1.62<br>41.17 | 1.06<br>26.92       | 1.540<br>39.12      | 1.417<br>36.0       |
| CFS, CHS | 1.23<br>31.24 | 2.53<br>64.26 | 1.62<br>41.17 | 1.12<br>28.5        | 1.540<br>39.12      | —                   |
| CFE, CHE | 1.74<br>44.2  | 2.53<br>64.26 | 1.62<br>41.17 | 1.12<br>28.5        | 1.540<br>39.12      | 1.417<br>36.0       |

## Part Numbers

|        |        |        |        |
|--------|--------|--------|--------|
| 10CS1  | 10CE1  | 1CHS1  | 1CHE1  |
| 1CFS1  | 1CFE1  | 3CHS1  | 3CHE1  |
| 3CFS1  | 3CFE1  | 6CHS1  | 6CHE1  |
| 6CFS1  | 6CFE1  | 10CHS1 | 10CHE1 |
| 10CFS1 | 10CFE1 | 10CBS1 | 10CBE1 |

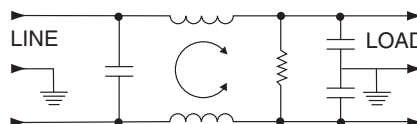
## Recommended Panel Cutout



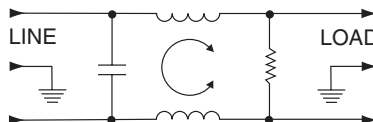
Panel Cutout for thickness of .031-.098 [.8-2.5]. Not recommended for plastic panels.  
For snap-in applications, the D sides of the cutout must have a .02 [.508] radius on the installation side. Snap-in models allow front mounting only.

## Electrical Schematics

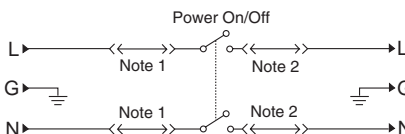
### F Models (CFS, CFE)



### H Models (CHS, CHE)



### B Models (CBS, CBE)



Note 1: Jumpers provided on CBS and CBE versions only.  
Note 2: Location of optional filter

Resistor location for reference only.