

T Series

High Performance
RFI Power Line Filters
for Switching Power Supplies



UL Recognized
CSA Certified
VDE Approved
SEV Approved*

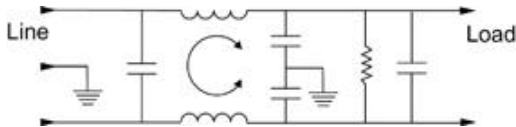
T Series

The T series RFI filters provide superior common-mode and premium differential-mode attenuation, exceeded only by that of Q series filters. This remarkable performance is available for current ratings up to 20 amps in package sizes smaller than comparable EP series filters. In fact, the 10-amp T is smaller than the 6-amp EP.

These filters are a size- and cost-effective choice for very noisy equipment that must meet the emission limits of FCC Parts 15 and 18 or EN55022, A-level. In some cases, these filters can even bring equipment into compliance with EN55022, B-level. This performance is accomplished with circuits that still meet the very low leakage current requirements of SEV, VDE portable equipment, and (120 Volt) UL544 nonpatient medical equipment.

Electrical Schematics

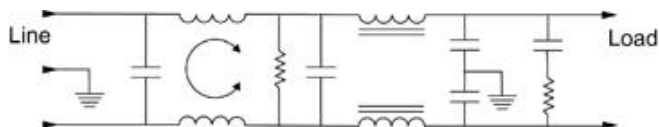
3ET & 6ET



10ET & 10VT



15ET & 15VT, 20ET & 20VT



Resistor location for reference only.



15A-T1

Specifications

Maximum leakage current, each line-to-ground	ET	VT
@ 120 VAC 60 Hz (3A, 6A, 10A)	.30 mA	.75 mA
@ 120 VAC 60 Hz (15A, 20A):	.30 mA	1.2 mA
@ 250 VAC 50 Hz (3A, 6A, 10A)	.50 mA	1.25 mA
@ 250 VAC 50 Hz (15A, 20A):	.50 mA	2.0 mA
Hipot rating (one minute):		
line-to-ground		2250 VDC
line-to-line		1450 VDC
Operating frequency:		50/60 Hz
Rated voltage:		120/250 VAC
Rated current:	@120 VAC	@ 250 VAC
3ET	3A	2.75A
6ET	6A	5A
10ET/10VT	10A	8A
15ET/15VT	15A	12A
20ET/20VT	20A	19A

Minimum insertion loss in dB:

Line-to-ground in 50 ohm circuit

Current Rating	Frequency-MHz										
	.01	.03	.05	.15	.5	1	2	5	10	20	30
ET											
3A	22	32	36	46	47	44	43	40	42	42	42
6A	16	26	30	41	47	44	43	43	40	42	42
10A	12	22	26	36	47	42	42	40	42	42	45
15A	8	17	22	31	43	44	44	42	47	52	43
20A	3	12	17	26	34	36	37	37	42	47	38
VT											
10A	12	22	26	38	52	50	50	50	50	50	50
15A	8	17	22	33	52	52	52	52	57	45	35
20A	3	12	17	29	42	47	50	51	55	40	30

Line-to-line in 50 ohm circuit

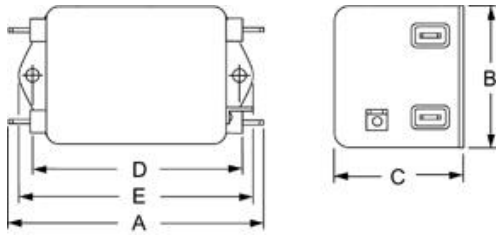
Current Rating	Frequency-MHz										
	.01	.03	.05	.15	.5	1	2	5	10	20	30
ET											
3A	3	1	30	61	70	70	70	50	50	50	55
6A	4	2	14	51	70	70	70	65	47	50	55
10A	7	12	17	52	70	70	70	65	55	50	60
15A	12	19	15	51	70	70	70	70	70	65	60
20A	10	17	13	51	70	70	70	70	67	65	60
VT											
10A	7	12	17	52	70	70	70	65	65	50	65
15A	12	19	15	51	70	70	70	70	70	65	60
20A	10	17	13	51	70	70	70	70	67	65	60

*Except all 15A & 20A Models, Style T7, and VT Models

Case Styles

Metric shown in italics.

T1

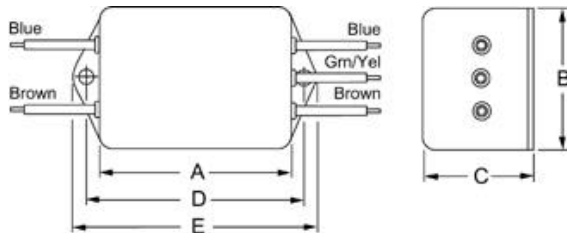


Typical dimensions

Terminals: $\frac{.250}{6.35}$ (5) Holes: $\frac{.07}{1.8}$ Dia.(4) Slot: $\frac{.07 \times .16}{1.8 \times 4.1}$

Mounting holes: $\frac{.188}{4.78}$ Dia. (2)

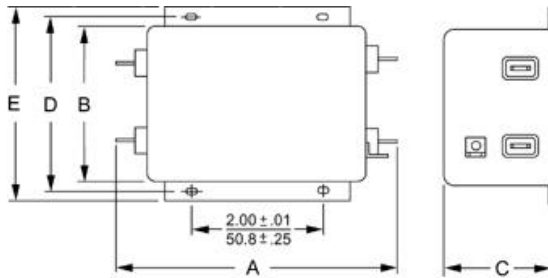
T3



Typical dimensions

Wire leads: $\frac{4.0}{101.6}$ Min. Mounting holes: $\frac{.188}{4.78}$ Dia. (2)

15A, 20A-T1

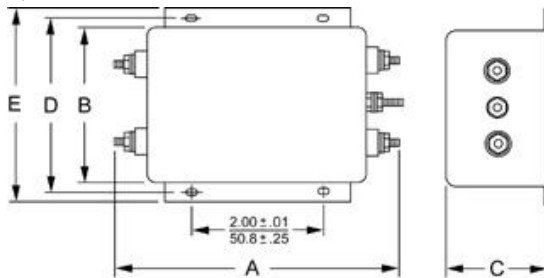


Typical dimensions

Terminals: $\frac{.250}{6.35}$ (5) Holes: $\frac{.07}{1.8}$ Dia.(4) Slot: $\frac{.07 \times .16}{1.8 \times 4.1}$

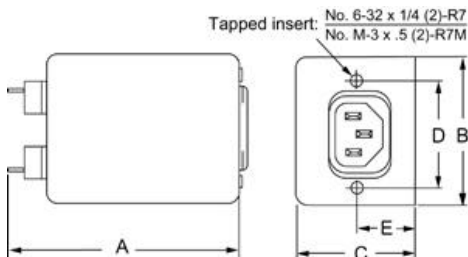
Mounting holes: $\frac{.203 \times .156}{5.16 \times 3.96}$ Dia. (4)

15A, 20A-T6



Terminals: No. 8-32 Torque 18 ± 2 in.lb.

T7



Tapped insert: No. 6-32 x 1/4 (2)-R7
No. M-3 x .5 (2)-R7M

Case Dimensions

Metric shown in italics.

Part No.	A (max)	B (max)	C (max)	D $\pm .015$ $\pm .38$	E (max)
3ET1, 6ET1	$\frac{3.56}{90.4}$	$\frac{2.15}{54.6}$	$\frac{1.81}{46.0}$	$\frac{2.938}{74.63}$	$\frac{3.38}{85.9}$
3ET3, 6ET3	$\frac{2.55}{64.8}$	$\frac{2.15}{54.6}$	$\frac{1.81}{46.0}$	$\frac{2.938}{74.63}$	$\frac{3.38}{85.9}$
3ET7, 6ET7	$\frac{3.52}{89.4}$	$\frac{2.25}{57.2}$	$\frac{1.78}{45.2}$	$\frac{1.575}{40.01}$	$\frac{0.63}{16.0}$ †
10ET1, 10VT1	$\frac{4.69}{119.1}$	$\frac{2.27}{57.7}$	$\frac{1.8}{45.7}$	$\frac{4.063}{103.2}$	$\frac{4.47}{113.5}$
10ET3, 10VT3	$\frac{3.69}{93.7}$	$\frac{2.27}{57.7}$	$\frac{1.8}{45.7}$	$\frac{4.063}{103.2}$	$\frac{4.47}{113.5}$
15ET1, 15VT1	$\frac{5.45}{138.4}$	$\frac{3.12}{79.2}$	$\frac{2.18}{55.4}$	$\frac{3.5}{88.9}$	$\frac{3.96}{100.6}$
20ET1, 20VT1	$\frac{5.45}{138.4}$	$\frac{3.12}{79.2}$	$\frac{2.18}{55.4}$	$\frac{3.5}{88.9}$	$\frac{3.96}{100.6}$
15ET6, 15VT6	$\frac{5.95}{151.1}$	$\frac{3.12}{79.2}$	$\frac{2.18}{55.4}$	$\frac{3.5}{88.9}$	$\frac{3.96}{100.6}$
20ET6, 20VT6	$\frac{5.95}{151.1}$	$\frac{3.12}{79.2}$	$\frac{2.18}{55.4}$	$\frac{3.5}{88.9}$	$\frac{3.96}{100.6}$

† $\frac{\pm .02}{\pm .5}$

Ordering Information

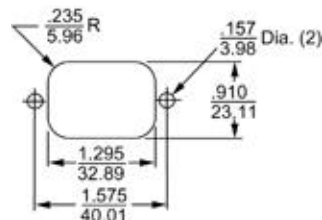
Consult your local Corcom sales representative for pricing.

Available Part Numbers

3ET1	10ET1	10VT1
3ET3	10ET3	10VT3
3ET7	15ET1	15VT1
6ET1	15ET6	15VT6
6ET3	20ET1	20VT1
6ET7	20ET6	20VT6

Line Cord No. GA400

Recommended Panel Cutout (T7 model)



Panel Cutout (Back mount)

Tolerance $\pm \frac{.005}{0.73}$