

With fuseholder 5x20 mm, with or without voltage selector (step switch)

Plug removal necessary for fuse replacement

new



Snap-in mounting
from front side
without voltage selector



Screw-on mounting
from rear side
without voltage selector



Screw-on mounting
from front side
with voltage selector



Description

- Panel Mount:
Screw-on version from front or rear side, snap-in version from front side
- 4 Functions:
Inlet Protection class I, Fuseholder for fuse-links 5 x 20 mm 1- or 2-pole, with or without voltage selector (step switch), Line filter in standard and medical version
- Quick connect terminals or wires
- Alternative: version without line filter [KEA](#)

Approvals

- VDE License Number: 40004665
- UL License Number: E76360

Characteristics

- Rear side mounting for efficient costsaving assembly
- Suitable for assembly in metal plated plastic housings
- All single elements are already wired
- Plug removal necessary for fuse-link replacement
- The fuse drawer "Fingergrasp" can be removed by hand
- For added safety "Extra-Safe" fuse drawers are available
- Fuse drawer meets requirements of medical standard IEC/EN 60601-1
- The fuseholder is accessible from the equipment front
- Qualified for use in equipment according IEC/EN 60950

Other versions on request

- Capacity CX 100 nF

References

[General Product Information](#)

Weblinks

[Approvals](#), [RoHS](#), [CHINA-RoHS](#), [e-Store](#), [SCHURTER-Stock-Check](#), [Distributor-Stock-Check](#)

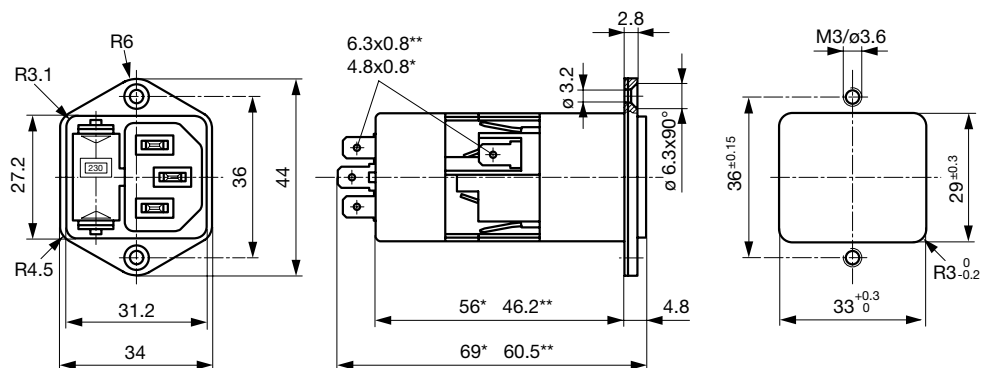
Technical Data

Ratings IEC	1 - 10A @ Ta 40 °C / 250 VAC; Hz 50
Ratings UL/CSA	1 - 10A @ Ta 40 °C / 125 VAC; 60Hz
Leakage Current	standard < 0.5 mA (250 V / 60 Hz) medical < 5 µA (250 V / 60 Hz)
Dielectric Strength	> 1.7 kVDC between L-N > 2.7 kVDC between L/N-PE Test voltage (2 sec)
Allowable Operation Temp.	-25 °C to 85 °C
Climatic Category	25/085/21 acc. to IEC 60068-1
Degree of Protection	from front side IP 40 acc. to IEC 60529
Protection Class	Suitable for appliances with protection class I acc. to IEC 61140
Terminal	Quick connect terminals or wires
Panel Thickness s	Screw-on: max 8 mm Mounting screw torque max 0.5 Nm Snap-in: 0.8 mm to 3 mm
Material: Housing	Thermoplastic, black, UL 94V-0

Appliance-Inlet /-Outlet	C14 acc. to IEC/EN 60320-1, UL 498, CSA C22.2 no. 42 (for cold condition) pin-temperature 70 °C, 10A, Protection class I
Fuseholder	1 or 2 pole, Shocksafe category PC2 acc. to IEC 60127-6, for fuse-links 5 x 20 mm
Rated Power Acceptance @ Ta 23 °C	5 x 20: 2W (1 pole)/ 1.6W (2-pole) per pole
Power Acceptance @ Ta > 23 °C	Admissible power acceptance at higher ambient temperature see derating curves
Voltage selector	optional, step, 3 digits
Line Filter	Standard and Medical Version, IEC 60939, IEC 60601-1, UL 1283, UL 544, EN 133 200, CSA C22.2 no. 8 Technical details
MTBF	> 1'700'000 h acc. to MIL-HB-217 F

Dimensions

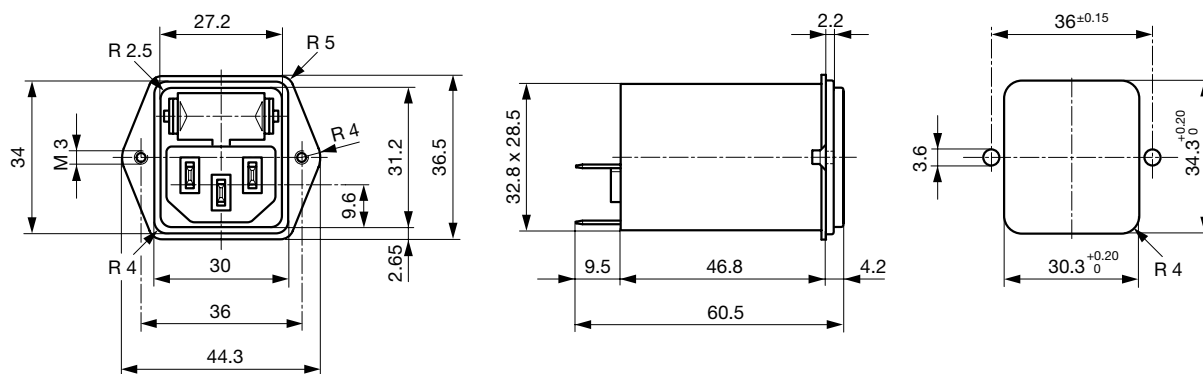
Screw-on mounting from front side



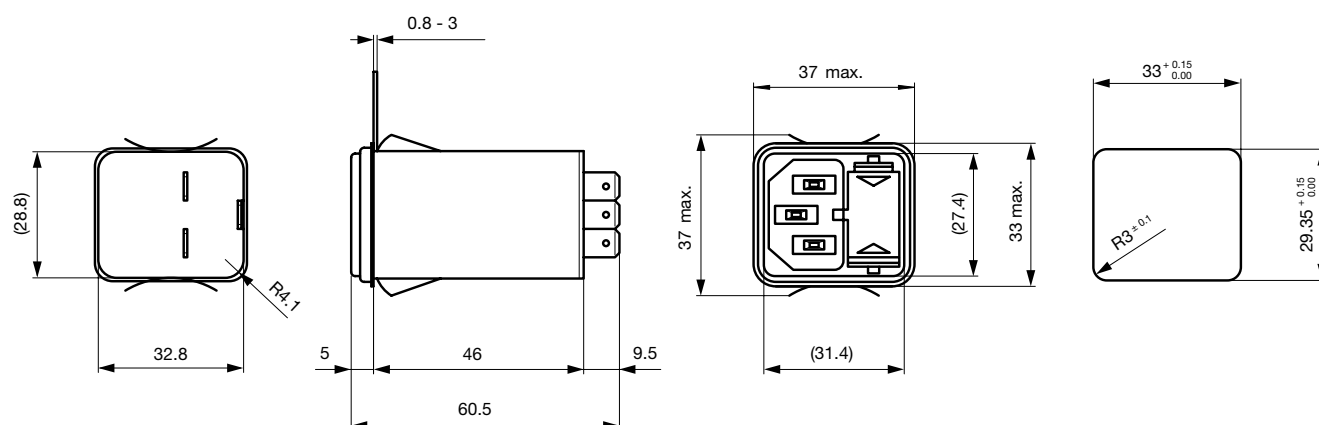
* with voltage selector

** without voltage selector

Screw-on mounting from rear side



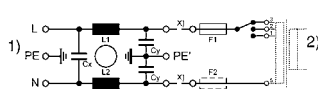
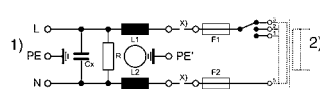
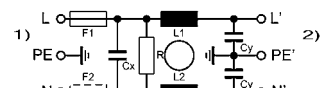
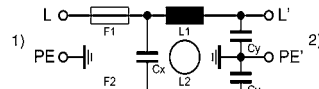
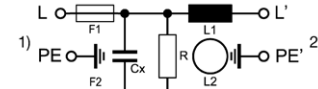
Snap-in mounting



Technical Data of Filter-Components

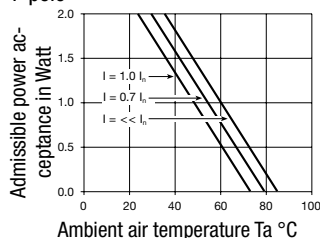
Rated Current [A]	Filter-Type	Inductances L [mH]	Capacitance CX [nF]	Capacitance CY [nF]	R [MΩ]
1	Standard Version	2 x 10	68	2.2	-
2	Standard Version	2 x 4	68	2.2	-
4	Standard Version	2 x 1.5	68	2.2	-
6	Standard Version	2 x 0.8	68	2.2	-
10	Standard Version	2 x 0.3	68	2.2	-
1	Medical Version (M5)	2 x 10	68	-	1
2	Medical Version (M5)	2 x 4	68	-	1
4	Medical Version (M5)	2 x 1.5	68	-	1
6	Medical Version (M5)	2 x 0.8	68	-	1
10	Medical Version (M5)	2 x 0.3	68	-	1
1	Medical Version (M80)	2 x 10	68	0.47	1
2	Medical Version (M80)	2 x 4	68	0.47	1
4	Medical Version (M80)	2 x 1.5	68	0.47	1
6	Medical Version (M80)	2 x 0.8	68	0.47	1
10	Medical Version (M80)	2 x 0.3	68	0.47	1

Diagrams

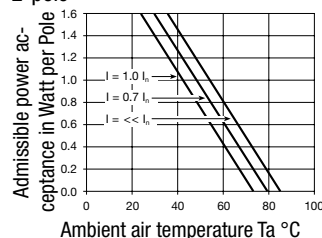
Standard version
with fuseholder 1- or 2-pole1) Line; 2) Load; x) external connection
to be made by the customerMedical version (M80)
with voltage selector1) Line; 2) Load; x) external connection
to be made by customerMedical version (M5)
with fuseholder 2-pole1) Line; 2) Load; x) external connection
to be made by the customerMedical version (M80)
without voltage selector1) Line
2) LoadStandard version
without voltage selector1) Line
2) LoadMedical version (M5)
without voltage selector1) Line
2) Load

Derating Curves

1-pole



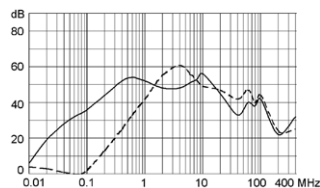
2-pole



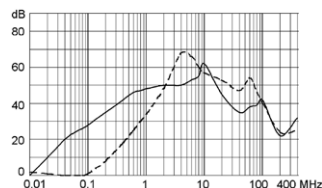
Attenuation Loss

Standard version

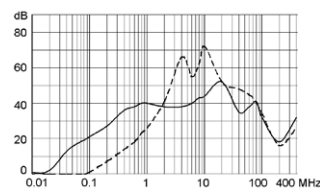
1 A



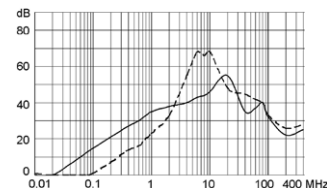
2 A



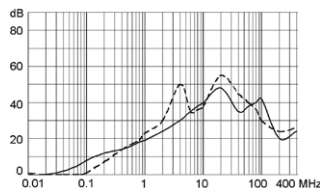
4 A



6 A

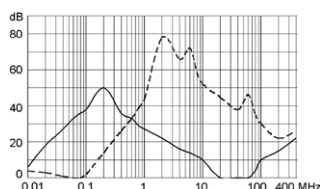


10 A

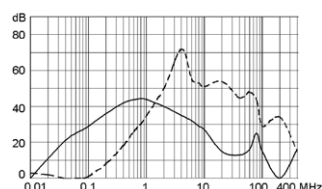


Medical version (M5)

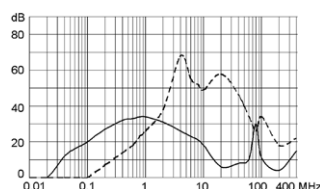
1 A



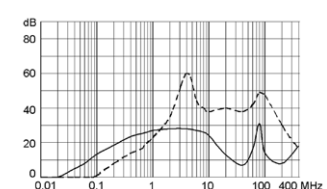
2 A



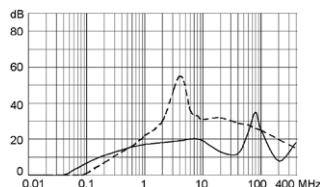
4 A



6 A



10 A

**Variants**[Distributor-Stock-Check](#) | [SCHURTER-Stock-Check](#) | [e-Store](#)

Fuse drawer must be ordered separately (see accessories).

Rated Current [A]	Filter-Type	Panel mounting	Mounting side	Fuseholder	Terminal	Voltage selector	Order Number
1	Standard Version	Snap-in	Front-Side	1 pole	Quick connect terminals	-	4301.6011
1	Standard Version	Snap-in	Front-Side	2-pole	Quick connect terminals	-	4301.6001
2	Standard Version	Snap-in	Front-Side	1 pole	Quick connect terminals	-	4301.6012
2	Standard Version	Snap-in	Front-Side	2-pole	Quick connect terminals	-	4301.6002
4	Standard Version	Snap-in	Front-Side	1 pole	Quick connect terminals	-	4301.6013
4	Standard Version	Snap-in	Front-Side	2-pole	Quick connect terminals	-	4301.6003
6	Standard Version	Snap-in	Front-Side	1 pole	Quick connect terminals	-	4301.6014
6	Standard Version	Snap-in	Front-Side	2-pole	Quick connect terminals	-	4301.6004
10	Standard Version	Snap-in	Front-Side	1 pole	Quick connect terminals	-	4301.6015
10	Standard Version	Snap-in	Front-Side	2-pole	Quick connect terminals	-	4301.6005
1	Standard Version	Screw-on	Front-Side	1 pole	Quick connect terminals	-	4301.5011
1	Standard Version	Screw-on	Front-Side	1 pole	Quick connect terminals	3 digits	4301.5051
1	Standard Version	Screw-on	Front-Side	2-pole	Quick connect terminals	-	4301.5001
1	Standard Version	Screw-on	Front-Side	2-pole	Quick connect terminals	3 digits	4301.5041
1	Standard Version	Screw-on	Rear-Side	1 pole	Flexible wire 18 AWG	-	4301.7311
1	Standard Version	Screw-on	Rear-Side	1 pole	Quick connect terminals	-	4301.7011

Rated Current [A]	Filter-Type	Panel mounting	Mounting side	Fuseholder	Terminal	Voltage selector	Order Number
1	Standard Version	Screw-on	Rear-Side	2-pole	Flexible wire18 AWG	-	4301.7301
1	Standard Version	Screw-on	Rear-Side	2-pole	Quick connect terminals	-	4301.7001
2	Standard Version	Screw-on	Front-Side	1 pole	Quick connect terminals	-	4301.5012
2	Standard Version	Screw-on	Front-Side	1 pole	Quick connect terminals	3 digits	4301.5052
2	Standard Version	Screw-on	Front-Side	2-pole	Quick connect terminals	-	4301.5002
2	Standard Version	Screw-on	Front-Side	2-pole	Quick connect terminals	3 digits	4301.5042
2	Standard Version	Screw-on	Rear-Side	1 pole	Quick connect terminals	-	4301.7012
2	Standard Version	Screw-on	Rear-Side	2-pole	Quick connect terminals	-	4301.7002
4	Standard Version	Screw-on	Front-Side	1 pole	Quick connect terminals	-	4301.5013
4	Standard Version	Screw-on	Front-Side	1 pole	Quick connect terminals	3 digits	4301.5053
4	Standard Version	Screw-on	Front-Side	2-pole	Quick connect terminals	-	4301.5003
4	Standard Version	Screw-on	Front-Side	2-pole	Quick connect terminals	3 digits	4301.5043
4	Standard Version	Screw-on	Rear-Side	1 pole	Quick connect terminals	-	4301.7013
4	Standard Version	Screw-on	Rear-Side	2-pole	Quick connect terminals	-	4301.7003
6	Standard Version	Screw-on	Front-Side	1 pole	Quick connect terminals	-	4301.5014
6	Standard Version	Screw-on	Front-Side	1 pole	Quick connect terminals	3 digits	4301.5054
6	Standard Version	Screw-on	Front-Side	2-pole	Quick connect terminals	-	4301.5004
6	Standard Version	Screw-on	Front-Side	2-pole	Quick connect terminals	3 digits	4301.5044
6	Standard Version	Screw-on	Rear-Side	1 pole	Quick connect terminals	-	4301.7014
6	Standard Version	Screw-on	Rear-Side	2-pole	Quick connect terminals	-	4301.7004
10	Standard Version	Screw-on	Front-Side	1 pole	Quick connect terminals	-	4301.5015
10	Standard Version	Screw-on	Front-Side	1 pole	Quick connect terminals	3 digits	4301.5055
10	Standard Version	Screw-on	Front-Side	2-pole	Quick connect terminals	-	4301.5005
10	Standard Version	Screw-on	Front-Side	2-pole	Quick connect terminals	3 digits	4301.5045
10	Standard Version	Screw-on	Rear-Side	1 pole	Quick connect terminals	-	4301.7015
10	Standard Version	Screw-on	Rear-Side	2-pole	Quick connect terminals	-	4301.7005
1	Medical Version (M5)	Snap-in	Front-Side	2-pole	Quick connect terminals	-	4301.6201
2	Medical Version (M5)	Snap-in	Front-Side	2-pole	Quick connect terminals	-	4301.6203
4	Medical Version (M5)	Snap-in	Front-Side	2-pole	Quick connect terminals	-	4301.6205
6	Medical Version (M5)	Snap-in	Front-Side	2-pole	Quick connect terminals	-	4301.6207
10	Medical Version (M5)	Snap-in	Front-Side	2-pole	Quick connect terminals	-	4301.6209
1	Medical Version (M5)	Screw-on	Front-Side	2-pole	Quick connect terminals	-	4301.5201
1	Medical Version (M5)	Screw-on	Front-Side	2-pole	Quick connect terminals	3 digits	4301.5241
1	Medical Version (M5)	Screw-on	Rear-Side	2-pole	Quick connect terminals	-	4301.7201
2	Medical Version (M5)	Screw-on	Front-Side	2-pole	Quick connect terminals	-	4301.5203
2	Medical Version (M5)	Screw-on	Front-Side	2-pole	Quick connect terminals	3 digits	4301.5243
2	Medical Version (M5)	Screw-on	Rear-Side	2-pole	Quick connect terminals	-	4301.7203
4	Medical Version (M5)	Screw-on	Front-Side	2-pole	Quick connect terminals	-	4301.5205
4	Medical Version (M5)	Screw-on	Front-Side	2-pole	Quick connect terminals	3 digits	4301.5245
4	Medical Version (M5)	Screw-on	Rear-Side	2-pole	Quick connect terminals	-	4301.7205
6	Medical Version (M5)	Screw-on	Front-Side	1 pole	Quick connect terminals	-	4301.5217
6	Medical Version (M5)	Screw-on	Front-Side	2-pole	Quick connect terminals	3 digits	4301.5247
6	Medical Version (M5)	Screw-on	Rear-Side	2-pole	Quick connect terminals	-	4301.7207
10	Medical Version (M5)	Screw-on	Front-Side	2-pole	Quick connect terminals	-	4301.5209
10	Medical Version (M5)	Screw-on	Front-Side	2-pole	Quick connect terminals	3 digits	4301.5249
10	Medical Version (M5)	Screw-on	Rear-Side	2-pole	Quick connect terminals	-	4301.7209
1	Medical Version (M80)	Screw-on	Rear-Side	2-pole	Quick connect terminals	-	4301.7202
2	Medical Version (M80)	Screw-on	Rear-Side	2-pole	Quick connect terminals	-	4301.7204
4	Medical Version (M80)	Screw-on	Rear-Side	2-pole	Quick connect terminals	-	4301.7006
6	Medical Version (M80)	Screw-on	Rear-Side	2-pole	Quick connect terminals	-	4301.7208
10	Medical Version (M80)	Screw-on	Rear-Side	2-pole	Quick connect terminals	-	4301.7000

Wire lenght: 150 mm

Packaging unit 10 Pcs

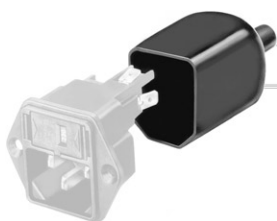
Required Accessory

Description



[Fusedrawer 2](#)
Fusedrawer with and without voltage selector insert

Accessory



[Assorted Covers](#)
Rear Cover



[Cord retaining kits](#)
Cord retaining strain relieve