

IDT HANDTOOL MODULE FOR SL 70400 & 70475 SERIES

Order No. **62100-0700**

Doc. No. 62100-0799
Release Date: 1998/09/18
Revision: Initial Release
Revision Date:



SL HANDTOOL MODULE Order No. 62100-0700

This module is designed to be used with the 63600-0478 hand tool. It inserts individual hand-loaded discrete wires into the Molex SL connector (70400 & 70475 series). The tool will accommodate 3 to 25 circuit connectors. (2 circuit connectors are always in pairs.) The module automatically indexes to the next position after termination. The module by itself measures 185mm (7.28in.) wide X 97mm (3.82in.) deep X 50mm (1.97in.) high and weights 0.41kg (0.9lb).

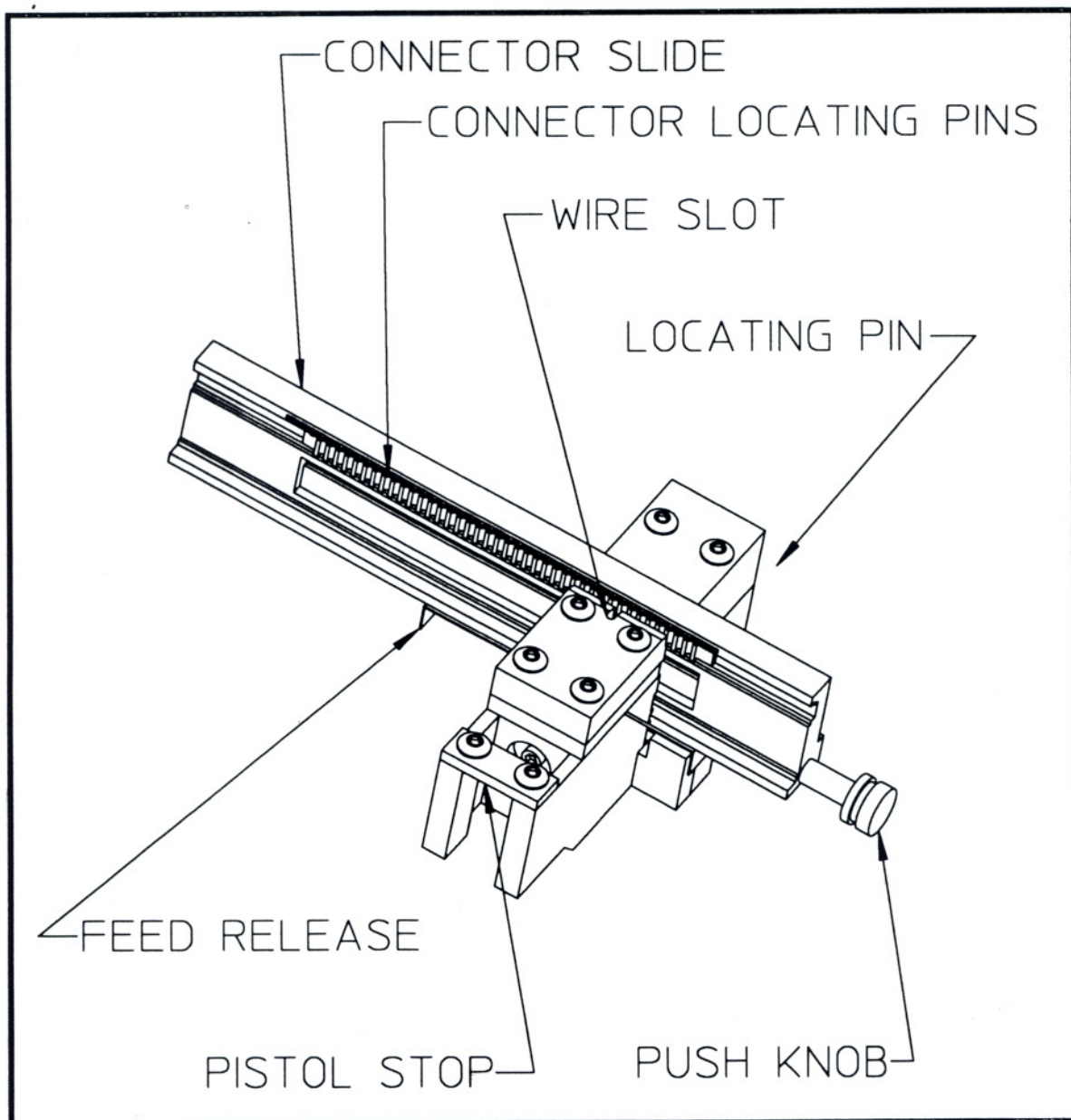


Fig. 1
OVERALL VIEW

INSTALLATION:

To install the SL Module onto the hand tool, align the module and the tool as shown in Fig. 2, and push the module down onto the hand tool until the stop on the module is firmly seated in the groove in the hand tool.

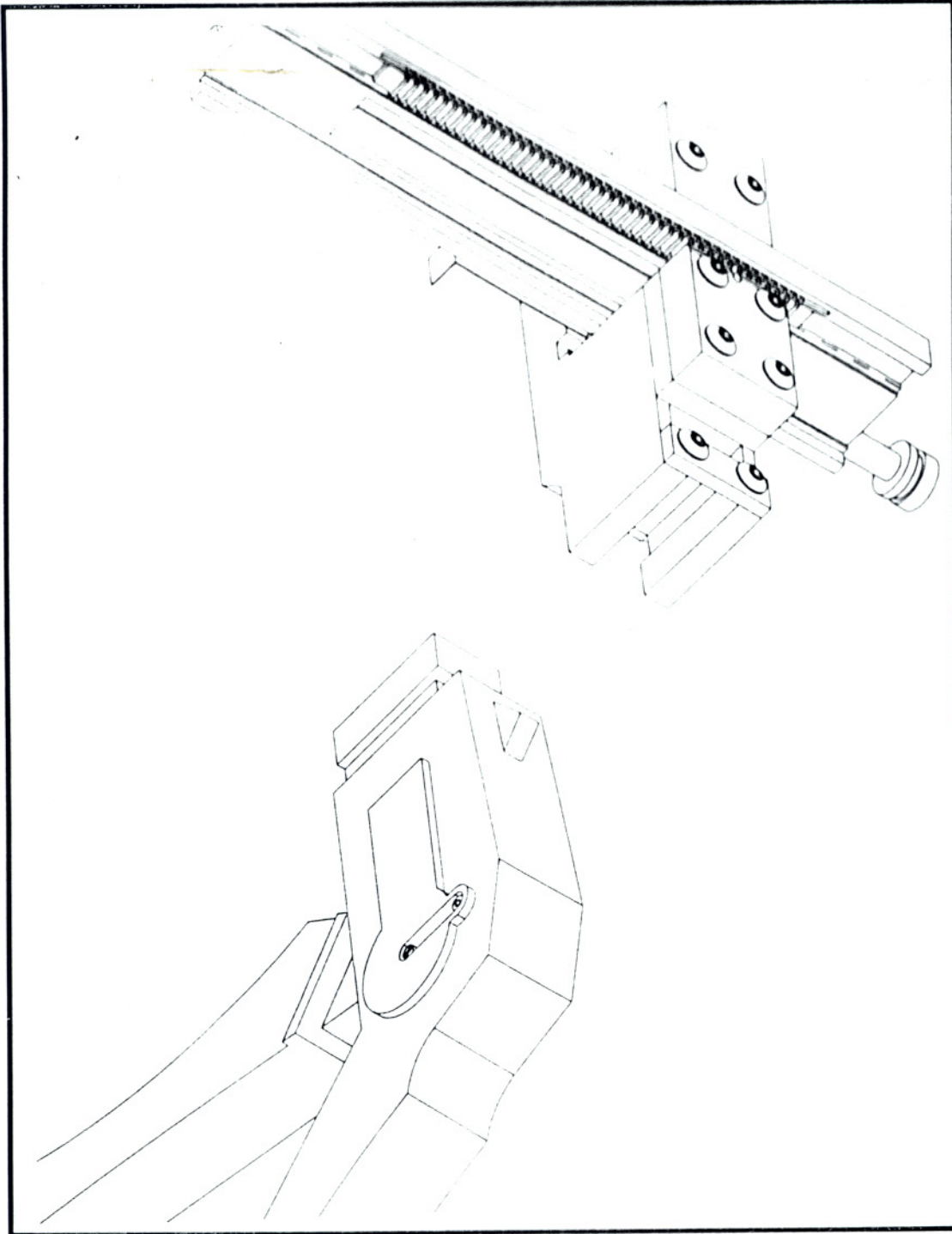


Fig. 2
INSTALLATION

TERMINATION DEPTH ADJUSTMENT

To adjust the depth of insertion of a wire into a terminal, remove the module from the hand tool and locate the adjusting screw on the back of the module (see Fig. 3). Turn this screw counterclockwise to increase the depth or clockwise to decrease the insertion depth. The termination depth can also be adjusted on the hand tool (See hand tool instruction manual Order No. 63600-0481. For proper termination depth see Fig. 4. See also product specification SDES-70400 for more information.

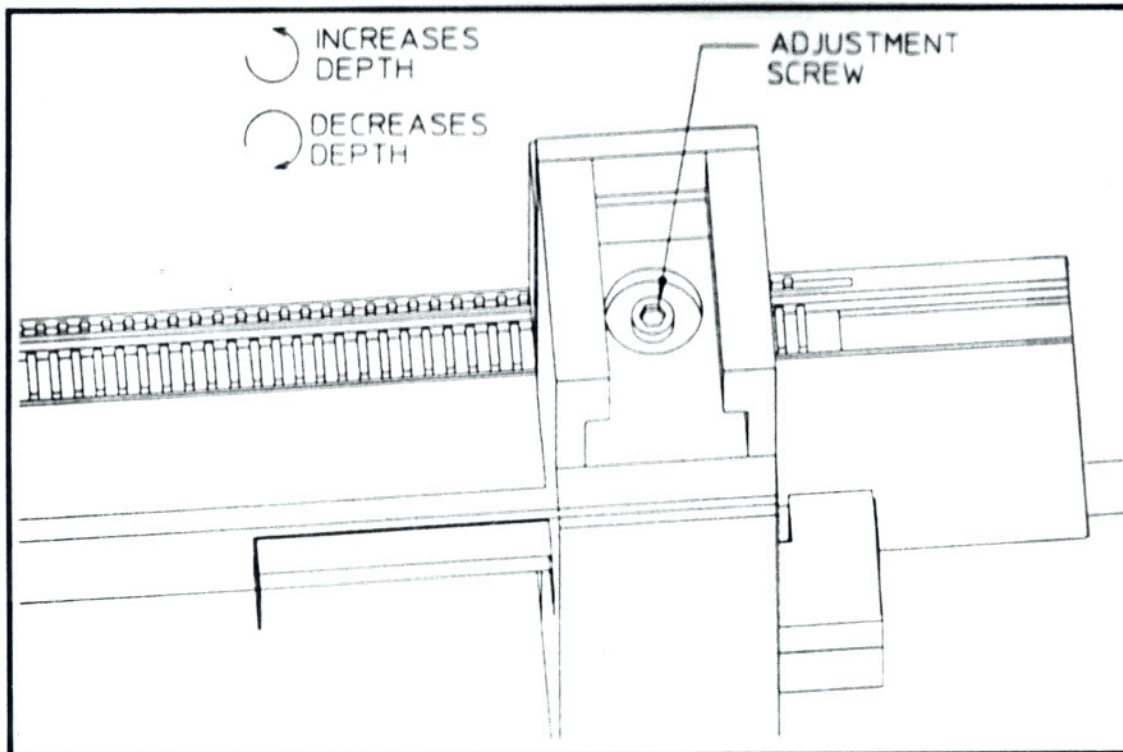


Fig. 3
TERMINATION DEPTH ADJUSTMENT

TERMINATION DEPTH SHALL BE THE WIRE DIAMETER PLUS .008". SEE FIGURE FOR MEASUREMENT METHOD.

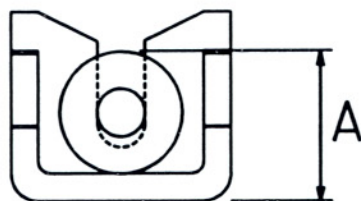


Fig. 4
TERMINATION DEPTH SPECIFICATIONS

OPERATION:

1. Push the feed release all the way to the right (See Fig. 1 & 6). This unlocks the connector slide.
2. Shift the connector slide all the way to the left using the push knob on the end of the slide. (This will push the release back to the left.) (See Fig. 6)
3. Load a connector onto the connector slide engaging the holes in the carrier strip onto the locating pins on the slide (See Fig. 5). Make sure the rightmost terminal on the connector is over the first termination position.
4. While pressing the locating pin on the front of the SL module, push the connector slide to the right until it stops. This should put the first terminal in front of the wire slot. (See Fig. 6)
5. Place a wire into the wire slot (See Fig. 7) down to the wire stop. *This is important because it determines the wire positioning in the terminal.*
6. While holding the wire in place, squeeze the hand tool trigger. This will insert the wire into the terminal.

NOTE: There is a full stroke ratchet on the hand tool to insure complete termination. If something jams, the ratchet mechanism can be released by pushing upward on the ratchet pawl at the base of the trigger. (See Fig. 8)

7. Gently release the trigger. The connector slide will automatically index to the next position.
8. Repeat steps 5, 6 & 7 until all wires are terminated.
9. Push the feed release to the right to unlock the slide.
10. Push the slide all the way to the right and remove the completed connector assembly from the slide.
11. Return to step 2 to continue.

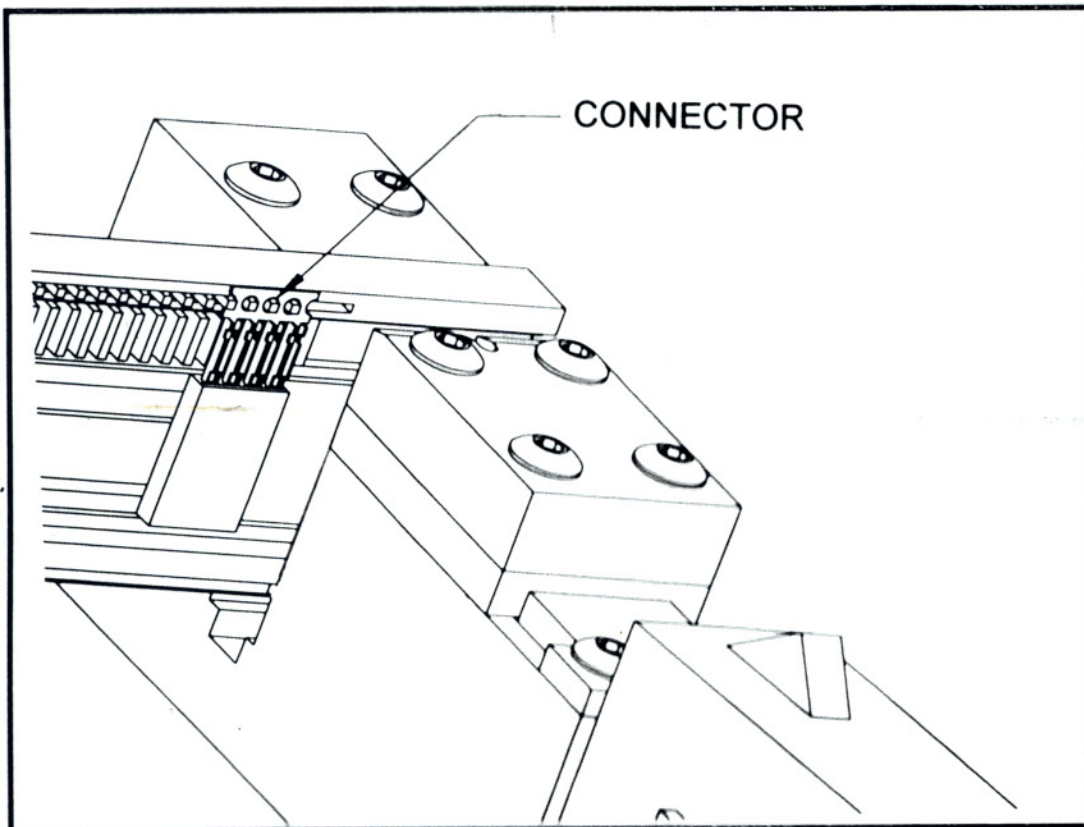


Fig. 5
CONNECTOR LOADING

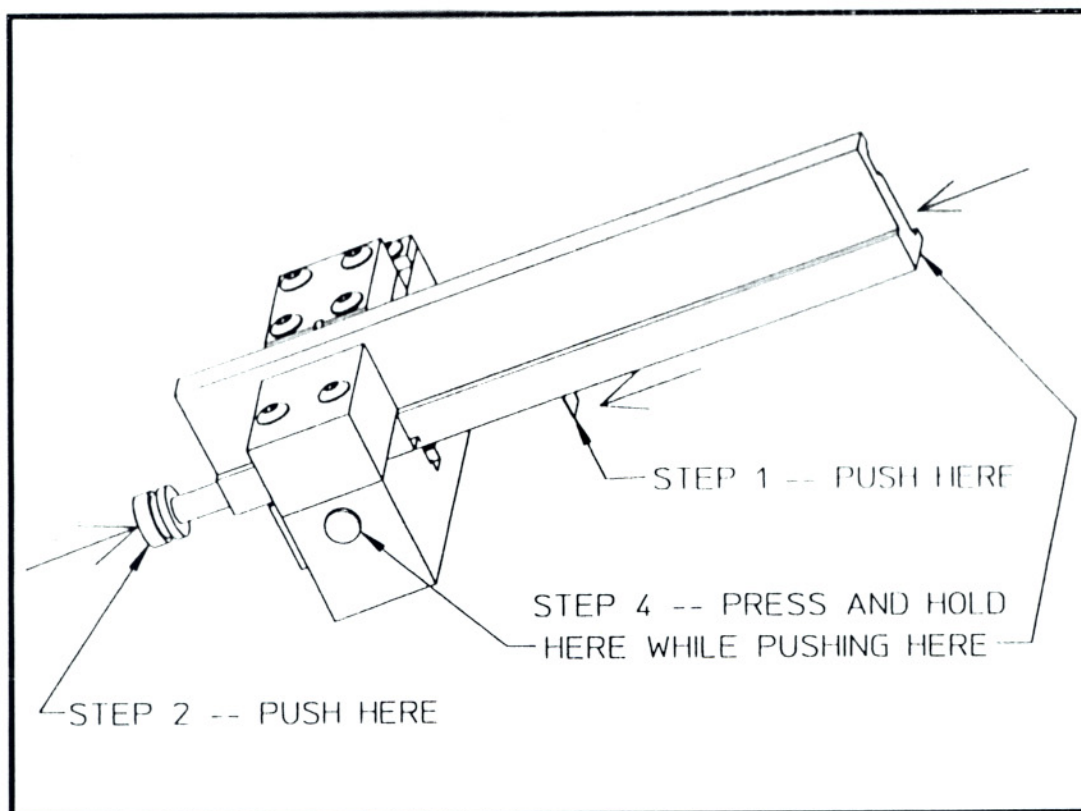


Fig. 6
SLIDE POSITIONING

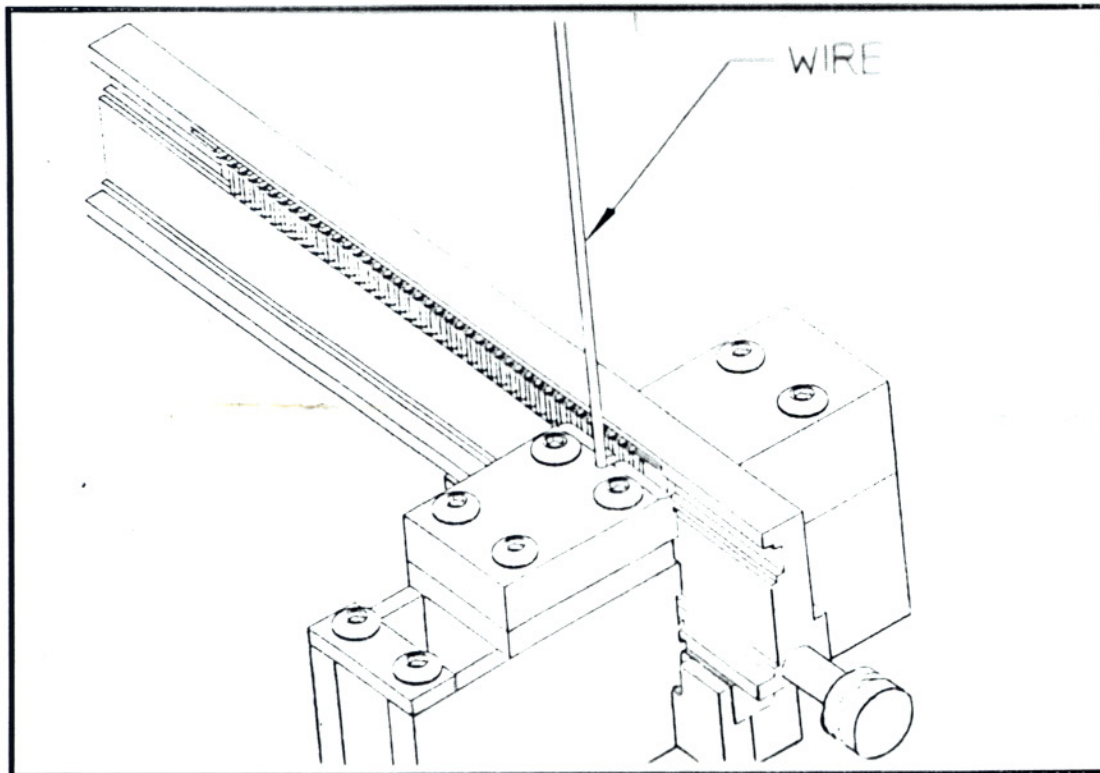


Fig. 7
WIRE POSITIONING

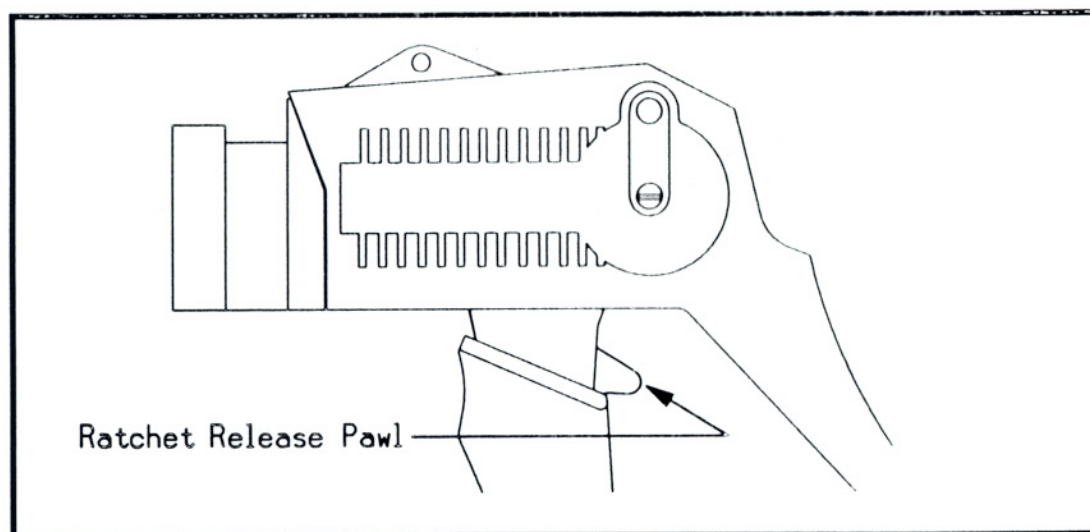


Fig. 7
RATCHET RELEASE

- REPAIR POLICY -

Molex is not in a position to repair hand tool modules. If the module becomes damaged, a new tool must be purchased. See Hand Tool Manual (Order No. 63600-0481) for replacement parts for that tool.



Bringing People & Technology Together, Worldwide

Worldwide Customer Service

US Application Tooling Group

1150 East Diehl Road
Naperville, IL 60563
Telephone: (630) 969-4550
Telefax: (630) 505-0049

Corporate Headquarters

2222 Wellington Court
Lisle, IL 60532
Telephone: (630) 969-4550
Telefax: (630) 969-1352

European Application Tooling Group

Molex UK, A Branch of Molex B.V.
Molex House, Franham Road
Bordon Hampshire GU35 0NU
England
Telephone: 44-1420-488488
Telefax: 44-1420-478185

European Headquarters

Molex Services (GmbH)
Dingolfinger Strasse 4
D-81673 Munich, Germany
Telephone: 49-89-4130920
Telefax: 49-89-401527
Video: 49-89-41309267 (plus)
49-89-41309267

Northern Asia Headquarters

Molex Japan Co. Ltd.
1-5-4 Fukami-Higashi
Yamato-City, Kanagawa, 242 Japan
Telephone: 81-462-61-4500
Telefax: 81-462-65-2366

Southeast Asia Headquarters

Molex Singapore PTE, Ltd.
110 International Road
Jurong Town, 629174 Singapore
Telephone: 65-262-3997
Telefax: 65-265-6044