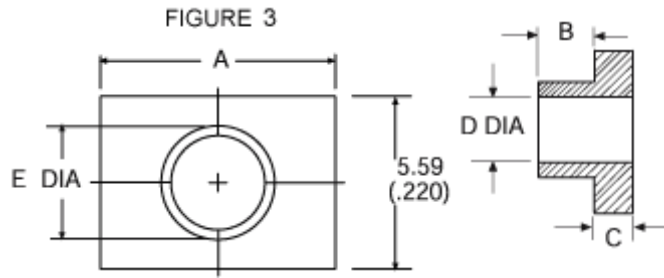


Insulating Shoulder Washers

- 40% glass filled polyphenylene sulfide (PPS).
- Chemically inert [no known solvents under 200°C (392°F)]
- Maximum recommended service temperature of 260°C (500°F)
- Recommended torque is .565Nm to .678Nm (5 to 6 inch-pounds) on all shoulder washers except -7, which has recommended torque of .452Nm (4 inch-pounds).



Polyphenylene Sulfide PPS Shoulder Washers

Note: A single gate extension, not to exceed .64mm (.025") in length, is allowable on the outside of all shoulder washers.

Model	A	B	C	D	E	Screw Size	Fig.
7721-10PPS	7.62 (.300)	2.41 (.095)	1.40 (.055)	2.97 (.117)	3.56 (.140)	4*	3

* Also for M3 Screw.