

OBE5000-18GM70-...-V1

Single path light beam switch

OBE5000-18GM70-...-V1

with M12 x 1 connector

CE

Sensors in threaded housings

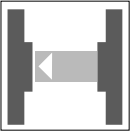


- ◆ Light/dark ON, programmable
- ◆ Protection degree IP67
- ◆ Strong metallic housing in cylindrical shape M18 x 1
- ◆ Sensitivity adjuster for optimal adaptation to the application
- ◆ LED indicating for a simple operation start

Ordering code		OBE5000-18GM70-SE4-V1	OBE5000-18GM70-SE5-V1
Effective detection range	0 ... 5 m	◆	◆
Reference target	Receiver	◆	◆
Adjustment range	500 ... 5000 mm	◆	◆
Light source	LED	◆	◆
Light type	Infrared, alternating light	◆	◆
Ambient light limit	10000 Lux	◆	◆
Standard conformity	EN 60947-5-2	◆	◆
Approvals	CE	◆	◆
Operating display	LED green (transmitter)	◆	◆
Function display	LED yellow: switching state (receiver)	◆	◆
Controls	sensitivity adjuster	◆	◆
Operating voltage	10 ... 30 V DC	◆	◆
Ripple	10 %	◆	◆
No-load supply current	≤ 20 mA (device)	◆	◆
Time delay before availability	≤ 50 ms	◆	◆
Signal output	1 switch output npn	◆	
	1 switch output pnp		◆
Switching type	light/dark switching	◆	◆
Switching voltage	max. 30 V DC	◆	◆
Switching current	max. 100 mA	◆	◆
Voltage drop	≤ 2.5 V	◆	◆
Switching frequency	≤ 300 Hz	◆	◆
Switch-on delay	1.5 ms	◆	◆
Response time	≤ 1.5 ms	◆	◆
Range hysteresis	≤ 10 %	◆	◆
Ambient temperature	-25 ... +55 °C	◆	◆
Storage temperature	-40 ... +70 °C	◆	◆
Protection degree	IP67	◆	◆
Connection type	Connector M12 x 1, 4-pin	◆	◆
Housing	brass, nickel plated	◆	◆
Light exit	PC	◆	◆
Mass	45 g (device)	◆	◆

Sensors in threaded housings

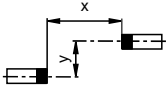
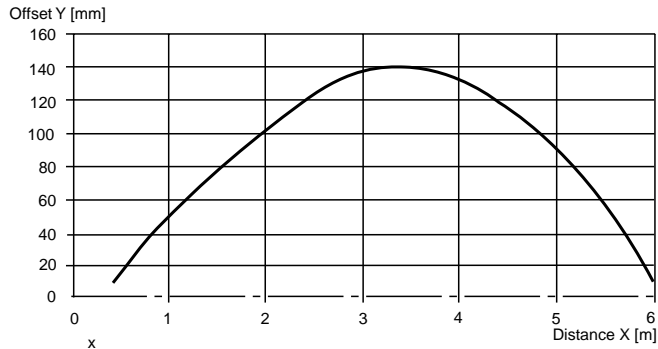




OBE5000-18GM70-...-V1

Diagrams

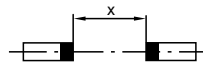
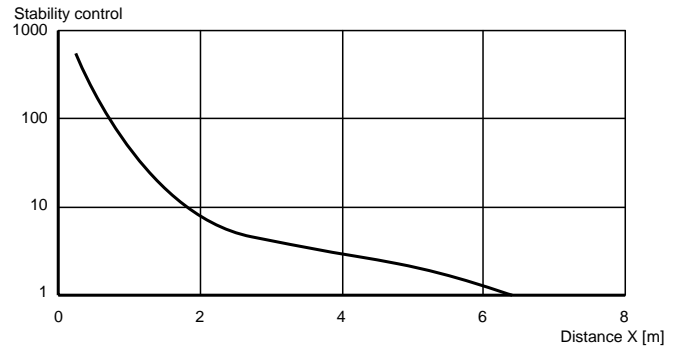
Characteristic response curve



Permissible separation (offset) between the optical axis of the emitter and receiver.

Relative received light strength

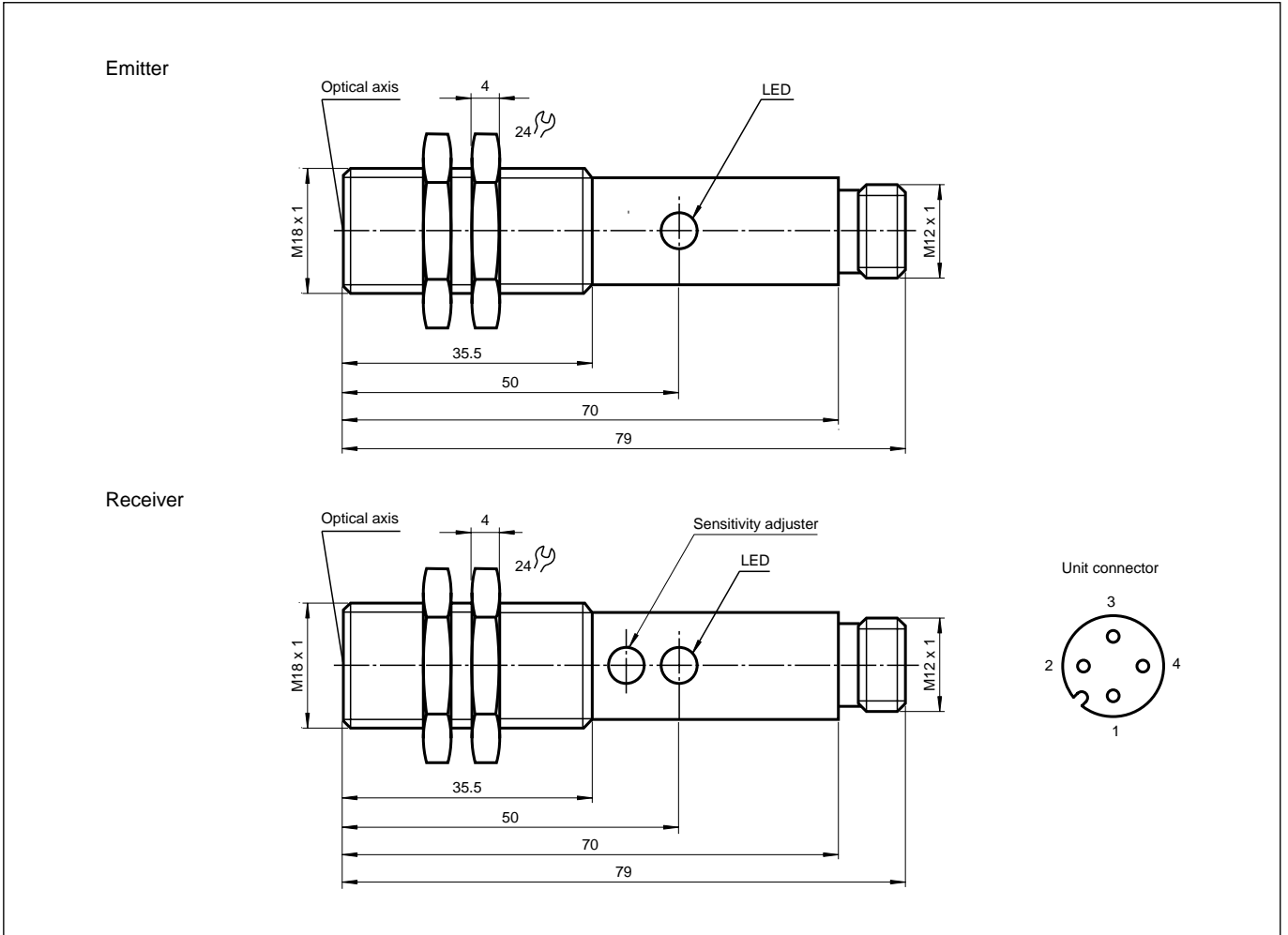
OBE 5000-18GM70



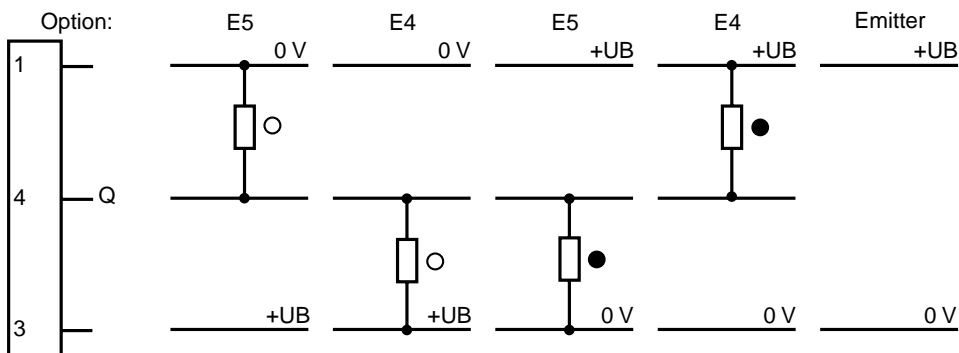
Sensors in threaded housings



Dimensions



Electrical Connection



Sensors in threaded housings

