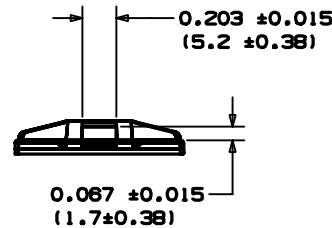
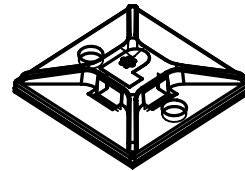
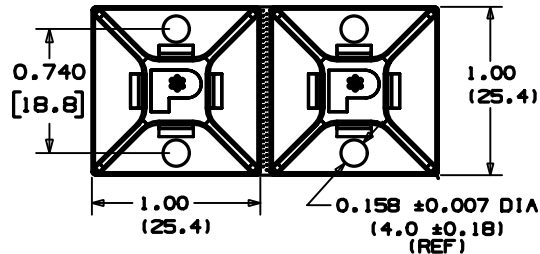


THIS COPY IS PROVIDED ON A RESTRICTED BASIS AND IS NOT TO BE USED IN ANY WAY DETRIMENTAL TO THE INTERESTS OF PANDUIT CORP.

NO WARRANTY, EXPRESSED OR IMPLIED, IS MADE BY PANDUIT WITH RESPECT TO ADHESIVE BOND PERFORMANCE. AMONG OTHER THINGS, THE CONDITIONS UNDER WHICH THESE MOUNTS MAY BE APPLIED AND/OR THE SURFACE TO WHICH THEY MAY BE APPLIED ARE BEYOND PANDUIT'S CONTROL.

| PANDUIT PART NUMBER* | REC'M FASTENER | USE WITH THESE CABLE TIE CROSS SECTIONS | WEIGHT lbs/100 pcs [g]/100 pcs |
|----------------------------|-------------------|---|--|
| ABM2S-AT | #6 (M3) SCREW | MINIATURE INTERMEDIATE STANDARD | 0.26 [119] |



ADHESIVE BACKING:
PRESSURE SENSITIVE FOAM TAPE
0.040(1.0) THICK WITH PROTECTIVE
LINER. MOUNT IS DESIGNED TO
SUPPORT 0.5lbs.(227g) MAX. WEIGHT
ON A CLEAN, DRY, SMOOTH, GREASE-
FREE SURFACE.

TO APPLY MOUNTS:

- 1) REMOVE MOUNT FROM PROTECTIVE LINER.
- 2) PLACE IN DESIRED LOCATION.
- 3) APPLY PRESSURE TO TOP SURFACE OF MOUNT.

NOTES:

- *1. SEE CURRENT PRICE SHEET FOR PART NUMBER SUFFIX DESIGNATION FOR PACKAGE SIZE & PART COLOR.
2. MOUNTS PROVIDED IN STRIPS OF TWO FOR EASY REMOVAL FROM LINER.
3. MOUNT HAS A CONTINUOUS OPERATING TEMPERATURE OF 180°F (82°C).

DIMENSIONS IN BRACKETS ARE METRIC [mm]

CAD FILENAME/LAYER#

G00239BY_PB_ABM2S-AT_05

PANDUIT

CORP.

TINLEY PARK, ILLINOIS

ABM2S-AT
ADHESIVE BACKED MOUNT

UNLESS OTHERWISE SPECIFIED,
DIMENSIONAL TOLERANCES ARE:
(.X) ±0.05 (1.3) (..XXX) ±0.010 (0.25)
(.XX) ±0.02 (0.5) ANGLES ± 5°

UNLESS OTHERWISE SPECIFIED,
ALL DIMENSIONS ARE GIVEN
IN INCHES, THIRD ANGLE PROJECTION.

DRAWN BY CJB

MAT'L:

SCALE 1 : 1

DATE 5/15/98

ABS

DRAWING NO.

G00239BY

CAD

A
SIZE

| REV | DATE | BY | CHK | DESCRIPTION | ECN | R | CUST | SUP |
|-----|----------|------|-----|---|----------|---|------|-----|
| 5 | 3/3/05 | JAD | | REMOVE ABM2S8 | G80239BY | 5 | | |
| 4 | 7/10/03 | L66 | | CHANGED TOLERANCE ON .203 AND .087 DIMENSION FROM .010 (.25) TO .015 (.38) | G80239BY | 4 | | |
| 3 | 12-1-00 | C6SM | | ADDED NEW PART# ABM2S8 FOR JAPAN PARTS | G80239BY | 3 | | |
| 2 | 10-28-00 | C6SM | | CHANGED .158 AND .167 DIMS TO REF | G80239BY | 2 | | |
| 1 | 12/18/98 | AJV | | UPDATED PART GEOMETRY AND DIMENSIONS | G80239BY | 1 | | |
| | | | | AND UPDATED NOTES. | | | | |
| R | 5/15/98 | CJB | | INITIAL RELEASE | G80239BY | R | | |