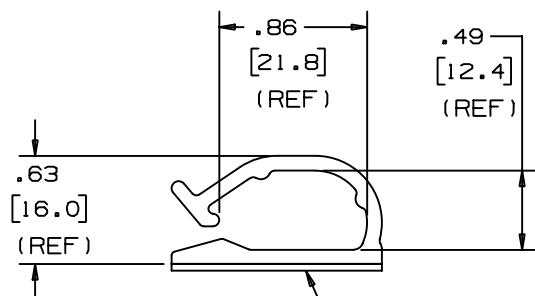
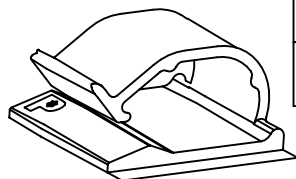
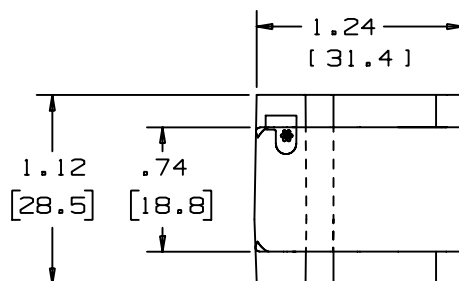


THIS COPY IS PROVIDED ON A RESTRICTED BASIS AND IS NOT TO BE USED IN ANY WAY DETRIMENTAL TO THE INTERESTS OF PANDUIT CORP.



ADHESIVE BACKING:
PRESSURE SENSITIVE FOAM 0.04 (1.0) THICK
WITH PROTECTIVE LINER. LINER TO EXTEND
BEYOND EDGE TO FORM RELEASE TAB.
MOUNT IS DESIGNED TO SUPPORT 0.7 lbs. (318g)
MAX. WEIGHT ON A CLEAN, DRY, SMOOTH SURFACE.


PANDUIT PART NUMBER*	MAXIMUM CABLE DIA. in. (mm)	WEIGHT lbs. (g) / 100 pcs	ADHESIVE BACKING
ACC62-A	0.62 (15.7)	0.96 (437)	FOAM & RUBBER
ACC62-AT			FOAM & ACRYLIC

NO WARRANTY, EXPRESSED OR IMPLIED, IS MADE BY PANDUIT WITH RESPECT TO ADHESIVE BOND PERFORMANCE. AMONG OTHER THINGS, THE CONDITIONS UNDER WHICH THESE MOUNTS MAY BE APPLIED, AND/OR THE SURFACE TO WHICH THEY MAY BE APPLIED, ARE BEYOND PANDUIT'S CONTROL.

- TO APPLY ADHESIVE CORD CLIP:
1. REMOVE PROTECTIVE LINER
 2. PLACE IN DESIRED LOCATION
 3. APPLY PRESSURE TO TOP OF CORD CLIP

NOTES:

- * SEE CURRENT PRICE SHEET FOR PART NUMBER SUFFIX DESIGNATION, FOR PACKAGE SIZE

DIMENSIONS IN PARENTHESES ARE METRIC (mm)									
CAD FILENAME/LAYERS GB0239BB_PB_ACC62_03									
 PANDUIT CORP. TINLEY PARK, ILLINOIS									
ADHESIVE CORD CLIP, ACC62-__									
UNLESS OTHERWISE SPECIFIED, DIMENSIONAL TOLERANCES ARE: (.X) ± 0.05 (1.3) (.XXX) ± 0.010 (0.25) (.XX) ± 0.02 (0.5) ANGLES ± 5.0°					UNLESS OTHERWISE SPECIFIED, ALL DIMENSIONS ARE GIVEN IN INCHES, THIRD ANGLE PROJECTION.				
3	7/18/00	JAD		DIMENSIONS, .63, .86, & .49 WERE CHANGED TO REF DIMENSIONS	GB0239BB	3			
REV	DATE	BY	CHK	DESCRIPTION	ECN	- R	CUST	SUP	

DRAWN BY JRL	MAT'L: NYLON 6/6 COLOR NATURAL	SCALE FULL
DATE 9-11-92		DWG GB0239BB
CHK'D		SIZE A