

查询AR749供应商

POSEICO SPA 捷多都 专业PCB打样工厂, 24小时加急出货



POSEICO SPA  
Power SEmiconductors Italian COporation

Via N. Lorenzi 8, 16152 Genova - ITALY  
Tel. ++ 39 010 6556234 - Fax ++ 39 010 6557519  
Sales Office:  
Tel. ++ 39 010 6556775 - Fax ++ 39 010 6442510

RECTIFIER DIODE

AR749

Repetitive voltage up to **2500 V**  
Mean forward current **4760 A**  
Surge current **70 kA**

FINAL SPECIFICATION

nov 02 - ISSUE : 03

Symbol	Characteristic	Conditions	Tj [°C]	Value	Unit
<b>BLOCKING</b>					
V <sub>RRM</sub>	Repetitive peak reverse voltage		175	2500	V
V <sub>RSM</sub>	Non-repetitive peak reverse voltage		175	2600	V
I <sub>RRM</sub>	Repetitive peak reverse current	V=VRRM	175	150	mA
<b>CONDUCTING</b>					
I <sub>F(AV)</sub>	Mean forward current	180° sin ,50 Hz, Th=55°C, double side cooled		4760	A
I <sub>F(AV)</sub>	Mean forward current	180° sin ,50 Hz, Tc=85°C, double side cooled		4520	A
I <sub>FSM</sub>	Surge forward current	Sine wave, 10 ms without reverse voltage	175	70	kA
I <sup>2</sup> t	I <sup>2</sup> t			24500 x 1E3	A <sup>2</sup> s
V <sub>FM</sub>	Forward voltage	Forward current = 3000 A	25	1.30	V
V <sub>F(TO)</sub>	Threshold voltage		175	0.65	V
r <sub>F</sub>	Forward slope resistance		175	0.140	mohm
<b>SWITCHING</b>					
t <sub>rr</sub>	Reverse recovery time		175		µs
Q <sub>rr</sub>	Reverse recovery charge				µC
I <sub>rr</sub>	Peak reverse recovery current				A
<b>MOUNTING</b>					
R <sub>th(j-h)</sub>	Thermal impedance, DC	Junction to heatsink, double side cooled		11	°C/KW
R <sub>th(c-h)</sub>	Thermal impedance	Case to heatsink, double side cooled		2	°C/KW
T <sub>j</sub>	Operating junction temperature			-30 / 175	°C
F	Mounting force			46.0 / 54.0	kN
	Mass			1700	g

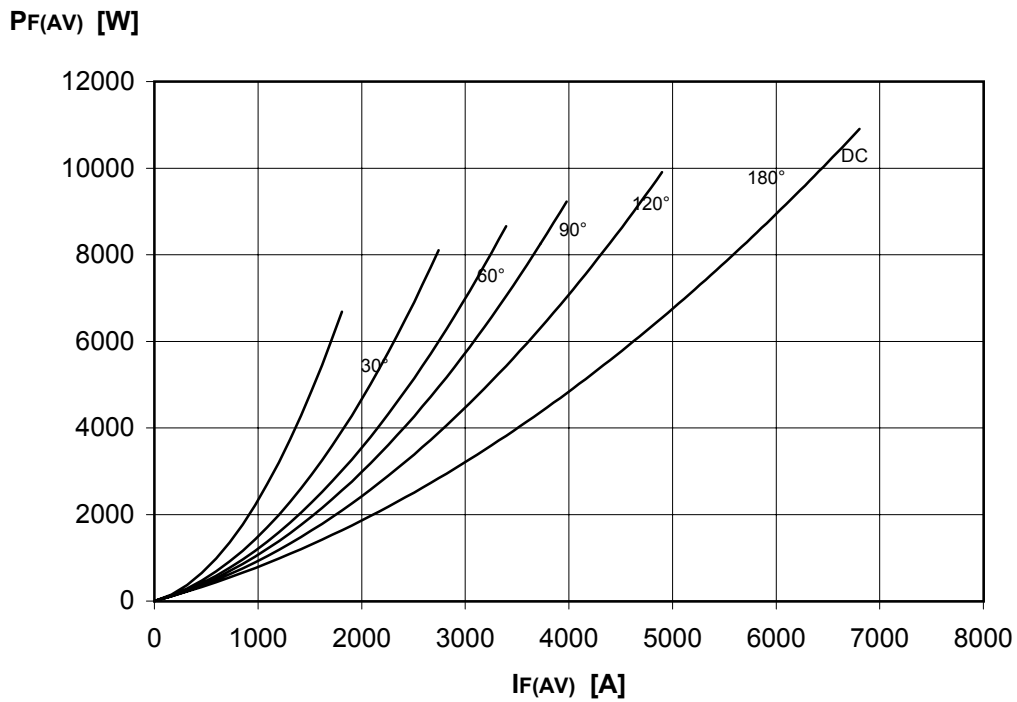
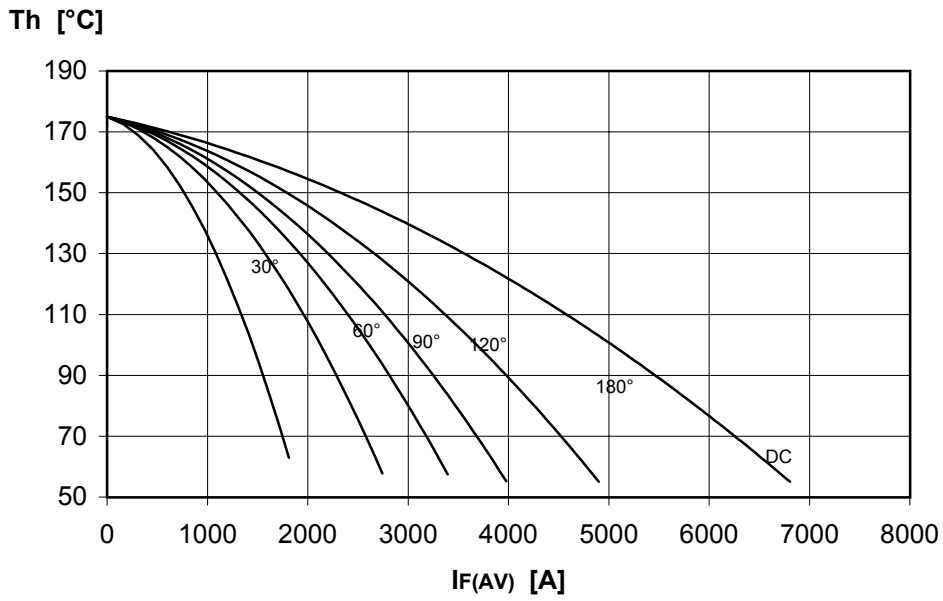
ORDERING INFORMATION : AR749 S 25

standard specification  VRRM/100



## DISSIPATION CHARACTERISTICS

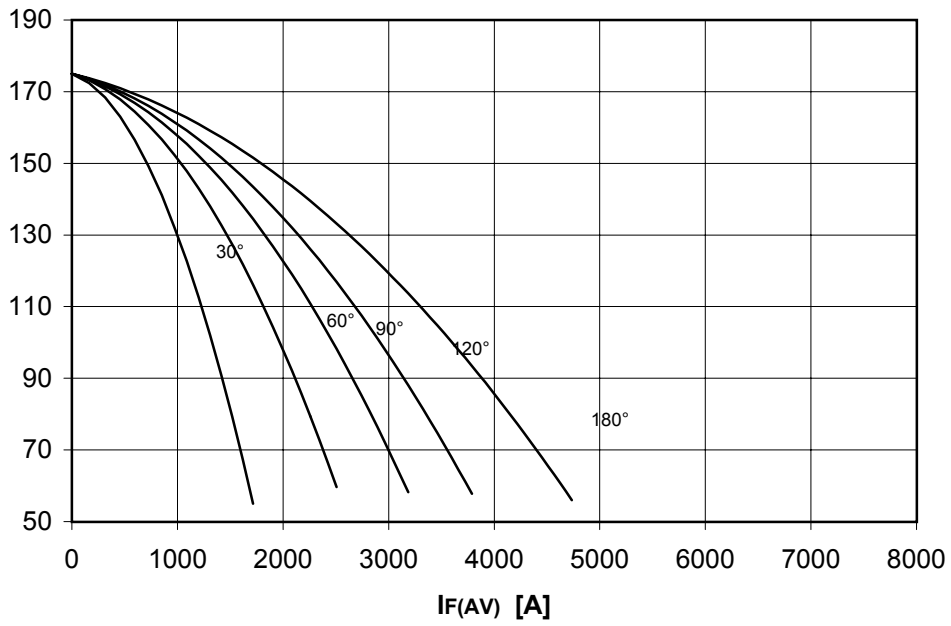
### SQUARE WAVE



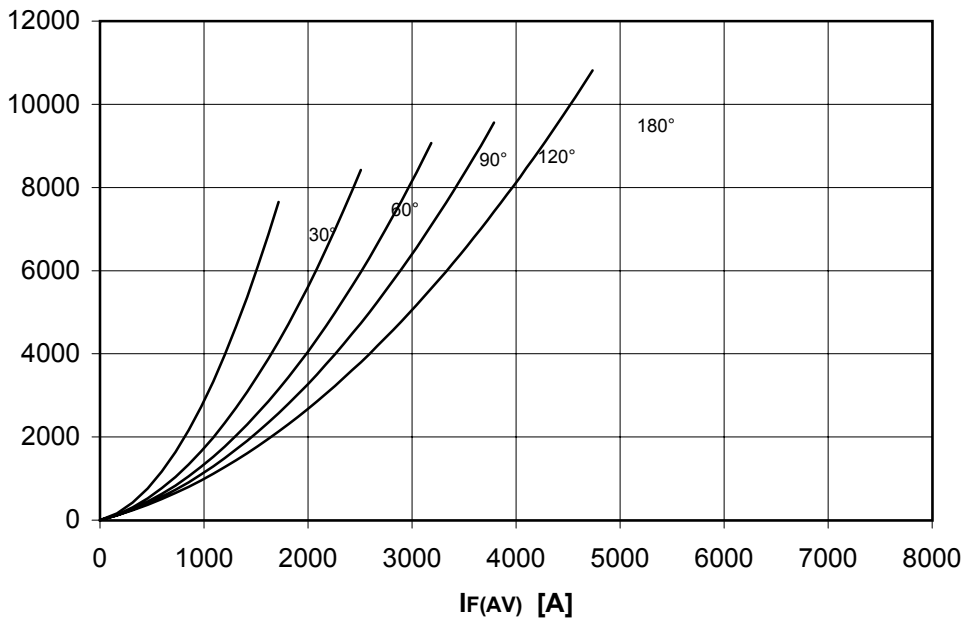
## DISSIPATION CHARACTERISTICS

SINE WAVE

Th [°C]



PF(AV) [W]

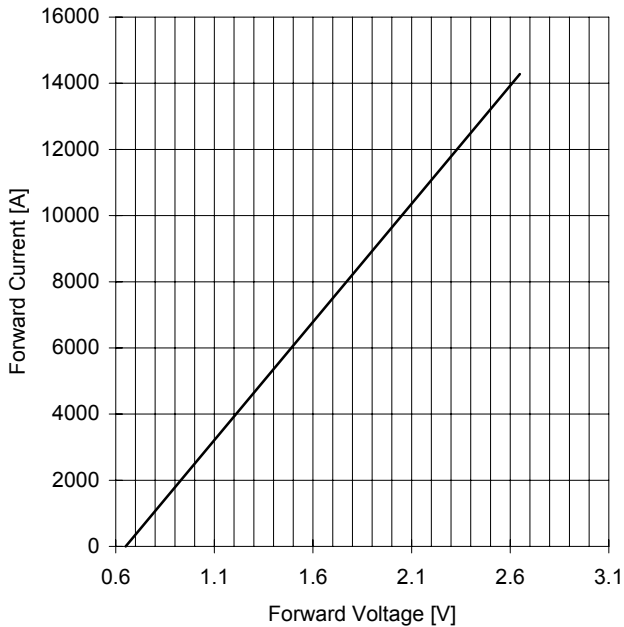


# AR749 RECTIFIER DIODE

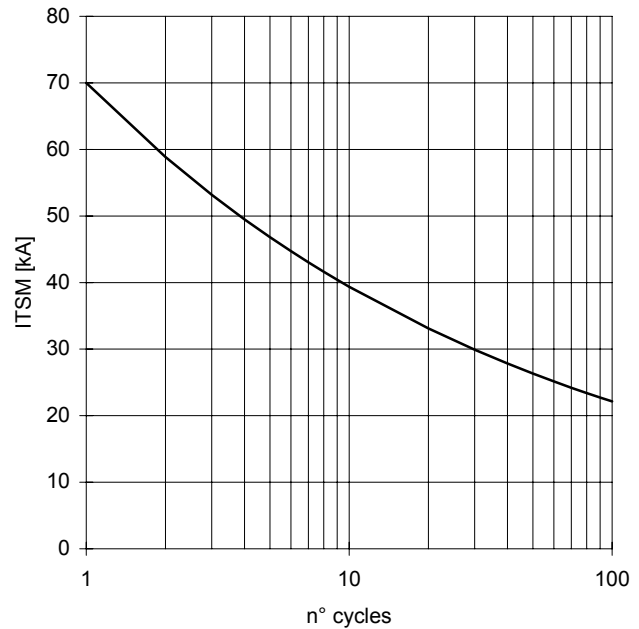


FINAL SPECIFICATION nov 02 - ISSUE : 03

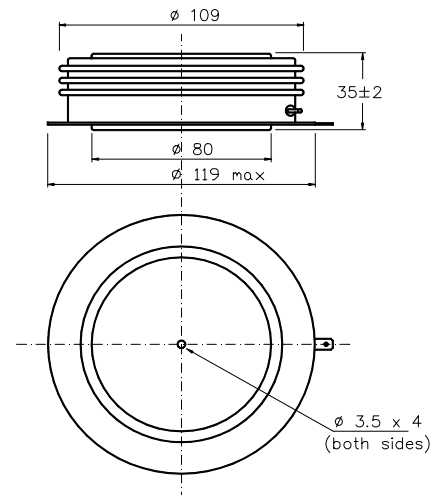
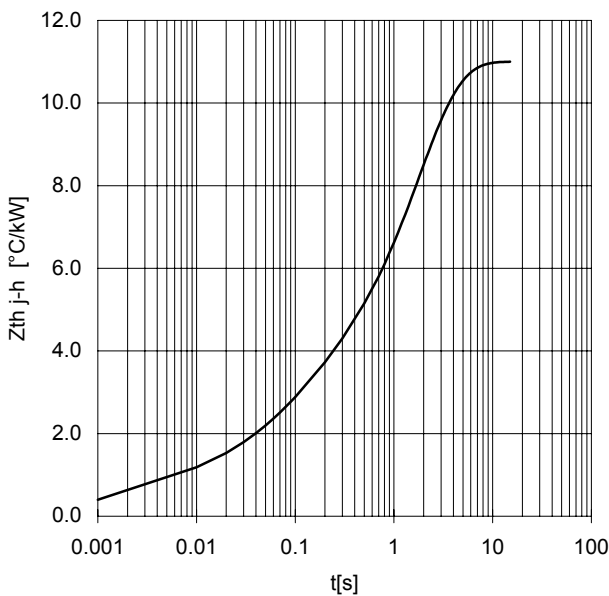
FORWARD CHARACTERISTIC  
T<sub>j</sub> = 175 °C



SURGE CHARACTERISTIC  
T<sub>j</sub> = 175 °C



TRANSIENT THERMAL IMPEDANCE  
DOUBLE SIDE COOLED



Dimensions  
in mm



All the characteristics given in this data sheet are guaranteed only with uniform clamping force, cleaned and lubricated heatsink, surfaces with flatness < .03 mm and roughness < 2 μm.

In the interest of product improvement POSEICO SpA reserves the right to change any data given in this data sheet at any time without previous notice.

If not stated otherwise the maximum value of ratings (symbols over shaded background) and characteristics is reported.

Distributed by

