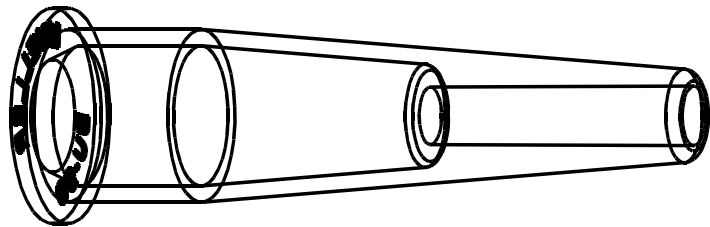


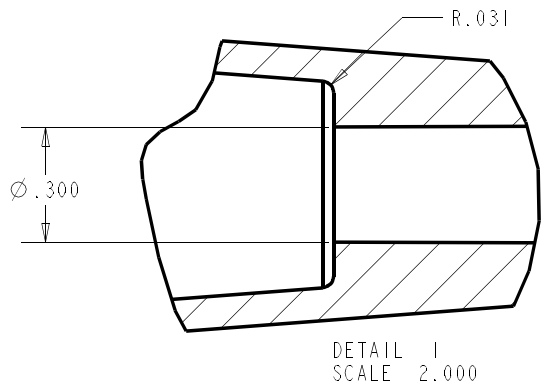
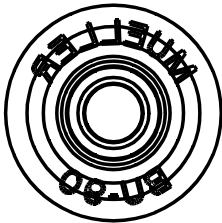
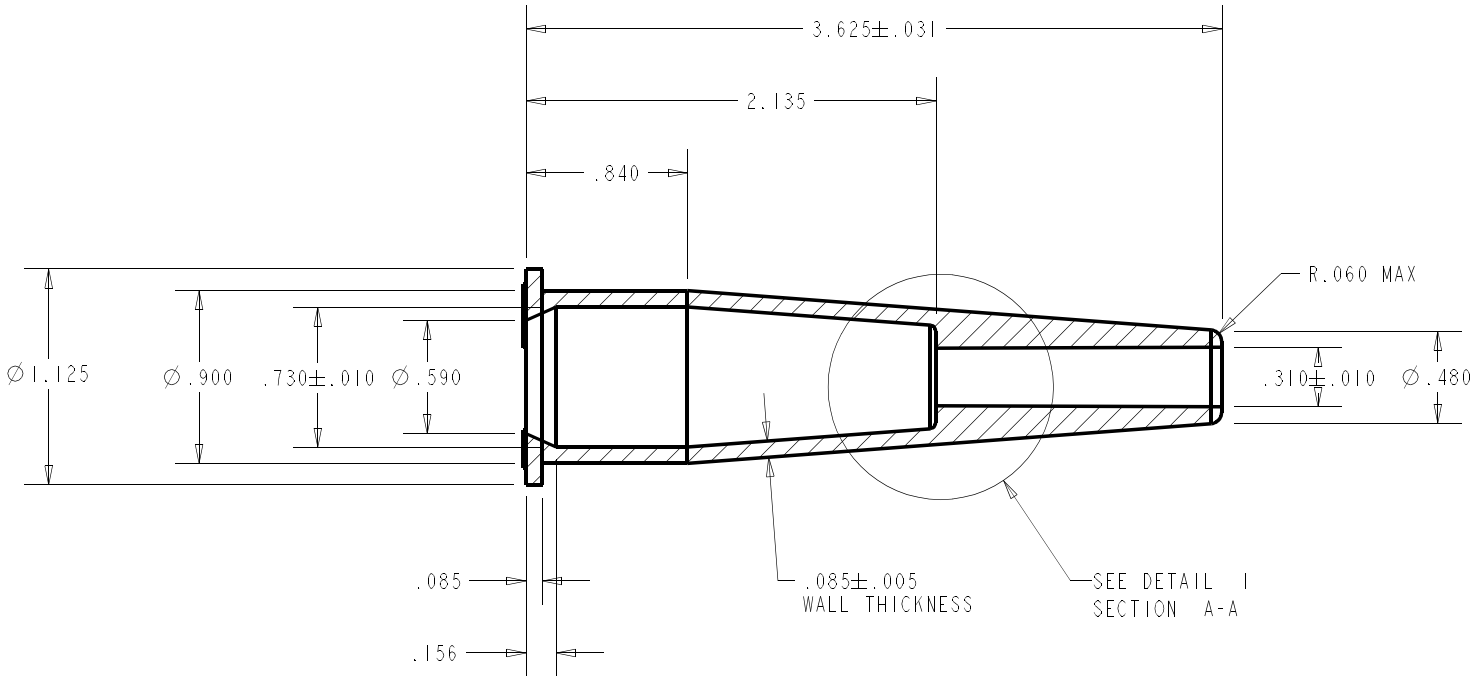
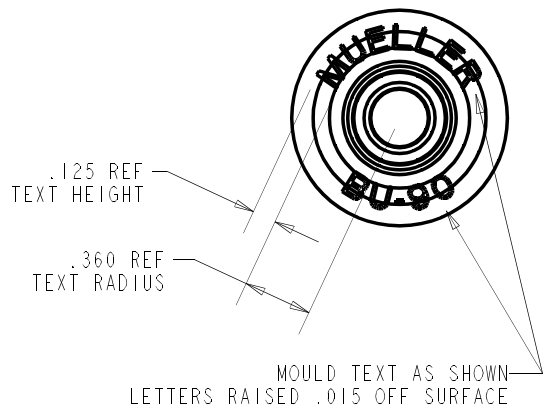
NOTES:

- 1 MATERIAL: PVC (POLYVINYL CHLORIDE)
SEE MATERIAL SPEC DWG 1000-116
- 2 COLOR: SEE DWG 1000-116 FOR COLOR INFORMATION
AVAILABLE COLORS: BU-90-0 BLACK BU-90-5 GREEN
BU-90-2 RED BU-90-6 BLUE
BU-90-4 YELLOW BU-90-9 WHITE
- 3 MFG/PROCESS: SEE DWG 1000-116 FOR ADDITIONAL
MFG/PROCESS INFORMATION
- 4 DRAFT ANGLE = 1° MAX
- 5 BREAK SHARP EDGES WITH .015 MAX RADIUS.
- 6 DIMENSIONS ARE IN INCHES


REV	ECN	DATE	DESCRIPTION
-	-	10/23/00	REPLACE DWG 127



SCALE 1.000



THIS DRAWING AND THE INFORMATION THERE IN IS THE PROPERTY OF THE MUELLER ELECTRIC COMPANY AND MAY BE USED SOLELY FOR THE PROPOSE FOR WHICH IT IS SUBMITTED. IT IS TO BE TREATED IN CONFIDENCE. IT MAY NOT BE CIRCULATED, REPRODUCED OR DIVULGE TO OTHER PARTIES WITHOUT WRITTEN CONSENT OF MUELLER ELECTRIC INC. IT MUST BE RETURNED UPON REQUEST.

VENDOR BLOCK		 MUELLER ELECTRIC CO. 1583 E. 31st ST. CLEVELAND, OH 44114			
THE VENDOR LISTED BELOW AGREES TO PROVIDE MUELLER ELECTRIC INC. WITH THE AGREED PRODUCT TO THE SPECIFICATIONS OF THIS PRINT. NO CHANGES WILL BE MADE WITHOUT THE APPROVAL OF MUELLER ELECTRIC INC.		SCALE: 1.000	DWG SIZE: B	APPROVED BY:	DRAWN BY: SER
		DWG DATE: 10/23/00			EDITED BY:
		REV DATE:			REVISION: -
COMPANY: _____		PART NUMBER: BU-90-#	BU-27 SERIES INSULATOR		
REP: _____		DESCRIPTION:			
TITLE: _____		FILE: BU-90	TOLERANCE: X.X = ±0.1 X.XX = ±0.01 X.XXX = ±0.005 X° = ±0.5°	DRAWING NUMBER:	SHEET NO. 1 / 1
DATE: _____					