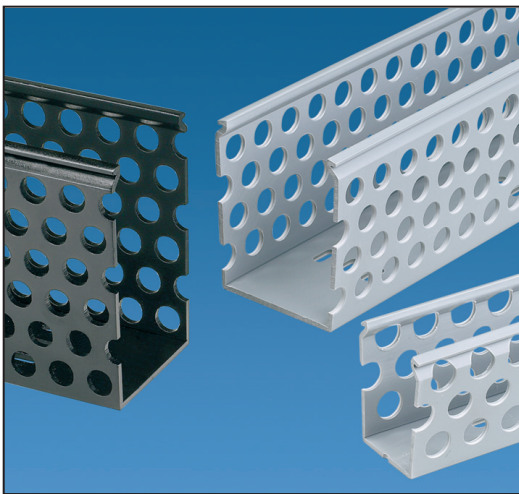


**Improved  
Design!**

## **PANDUIT® Type D - Flush Cover Round Hole Wiring Duct**



*PANDUIT® has redesigned its traditional round hole Type D Wiring Duct to provide greater wirefill capacity, improved cover retention and a sleek, flush base and cover fit. Now available in a range of sizes and colors.*



### **features, advantages and benefits**

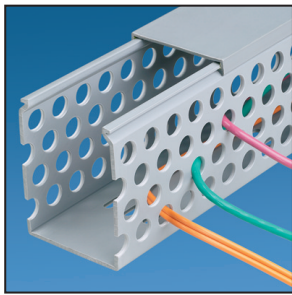
Flush cover design	Flush cover design holds 10-14% more wires than traditional D Duct designs	Improved aesthetics Greater capacity for dense panel applications Improved cover retention
Non-slip cover	Cover is held in place by co-extruded non-slip liner	Cover stays in place during shipment or other vibration
Rounded edges	<i>PANDUIT</i> exclusive feature	Will not cut installer's hands or wiring insulation
Round hole design	Retains and supports wires at variable heights	Wiring stays in place during panel fabrication when cover is removed
Base scoreline	Allows complete side wall removal	Easy installation of corner and t-junctions



**Sold exclusively through distribution to the Electrical OEM and Construction Markets**

**Everywhere you need us!**

# PANDUCT® Type D – Flush Cover Round Hole Wiring Duct



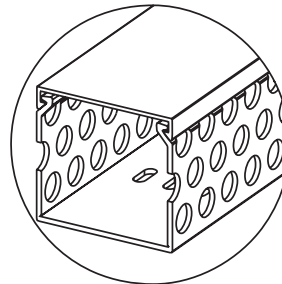
- Made of rigid PVC
- Rated for continuous use temperature up to 50°C (122°F)
- U.L. Flammability Rating: 94V-0
- Available in LG (Light Gray), BL (Black) or WH (White)
- Provided with standard mounting holes

## Colors

### Type D - Wiring Duct Standard Colors:



Colors shown are approximate.



### Flush Cover D Duct

- Greater wire capacity to facilitate large jobs and additions
- Improved aesthetics for more professional looking jobs
- Works with standard PANDUCT® Duct Cover to allow for quick transition to the improved flush cover design

## Ordering Information

Duct Part Numbers	Flush Cover D Duct External Dimensions		Cover Part Numbers	Duct Standard Carton Qty.	Cover Standard Carton Qty.	Standard Length
	W X H (in.)	W X H (mm)				
D1X2LG6	1.25 x 2.13	31.8 x 54.0	C1LG6	120 ft.	120 ft.	6 ft.
D1X3LG6	1.25 x 3.13	31.8 x 79.4		120 ft.		
D1X4LG6	1.25 x 4.08	31.8 x 103.6		60 ft.		
D1.5X2LG6	1.75 x 2.12	44.5 x 53.9	C1.5LG6	120 ft.	120 ft.	6 ft.
D1.5X3LG6	1.75 x 3.12	44.5 x 79.3		120 ft.		
D1.5X4LG6	1.75 x 4.12	44.5 x 104.5		60 ft.		
D2X2LG6	2.25 x 2.10	57.2 x 53.4	C2LG6	120 ft.	120 ft.	6 ft.
D2X3LG6	2.25 x 3.12	57.2 x 79.3		60 ft.		
D2X4LG6	2.25 x 4.09	57.2 x 103.9		60 ft.		
D2.5X3LG6	2.75 x 3.08	69.9 x 78.2	C2.5LG6	120 ft.	120 ft.	6 ft.
D3X2LG6	3.25 x 2.09	82.6 x 53.0	C3LG6	120 ft.	120 ft.	6 ft.
D3X3LG6	3.25 x 3.11	82.6 x 78.9		60 ft.		
D3X4LG6	3.25 x 4.11	82.6 x 104.3		60 ft.		
D4X2LG6	4.25 x 2.10	108.0 x 53.5	C4LG6	60 ft.	120 ft.	6 ft.
D4X3LG6	4.25 x 3.10	108.0 x 78.7		60 ft.		
D4X4LG6	4.25 x 4.10	108.0 x 104.1		60 ft.		

**ORDERING INFORMATION:** Order number of feet required in multiples of 6 ft. or standard carton quantities. All parts listed in LG (Light Gray) color. To order other colors substitute BL (Black) and WH (White).



## Flush Cover D Duct Wirefill Capacity

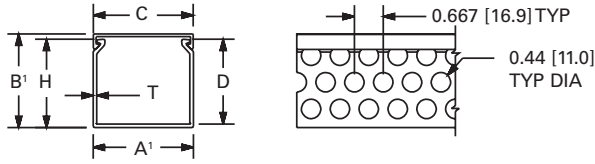
NOMINAL DUCT SIZE (WXH)	ELECTRICAL												CAT5 CABLES		
	8 AWG	10 AWG	12 AWG	14 AWG			16 AWG		18 AWG		22 AWG	24 AWG			
	0.216	0.153	0.122	0.158	0.105	0.139	0.165	0.096	0.125	0.084	0.113	0.065	0.217	0.250	0.422
	THHN	THHN	THHN	MTW	THHN	MTW	MTW	TFFN	MTW	TFFN	MTW	MTW	UTP/CM CAT5	UTP/CM CAT5	UTP/CM
1X2	24	49	77	46	104	59	42	124	73	162	90	270	24	18	6
1X3	37	73	115	69	155	89	63	186	110	243	134	406	36	27	10
1X4	49	98	154	92	207	118	84	248	146	324	179	541	49	37	13
1.5X2	37	73	115	69	155	89	63	186	110	243	134	406	36	27	10
1.5X3	55	110	173	103	233	133	94	279	165	364	201	609	55	41	14
1.5X4	73	146	230	137	311	177	126	372	219	486	269	811	73	55	19
2X2	49	98	154	92	207	118	84	248	146	324	179	541	49	37	13
2X3	73	146	230	137	311	177	126	372	219	486	269	811	73	55	19
2X4	98	195	307	183	415	237	168	496	293	648	358	1062	97	73	26
2.5X3	92	183	288	172	389	222	157	465	274	607	336	1014	91	69	24
3X2	73	146	230	137	311	177	126	372	219	486	269	811	73	55	19
3X3	110	220	346	206	466	266	189	558	329	729	403	1217	109	82	29
3X4	147	293	461	275	622	355	252	744	439	972	537	1623	146	110	39
4X2	98	195	307	183	415	237	168	496	293	648	358	1062	97	73	26
4X3	147	293	461	275	622	355	252	744	439	972	537	1623	146	110	39
4X4	196	391	614	366	829	473	336	992	585	1296	716	2164	194	146	51

Wirefill is based on 50% cross-sectional area.

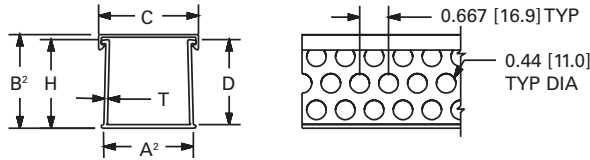
# Flush Cover vs. Traditional D Duct Dimensions

# Mounting Hole Dimensions

## Flush Cover D Duct with Cover

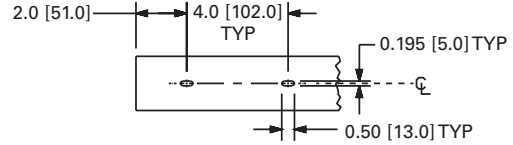


## Traditional D Duct with Cover

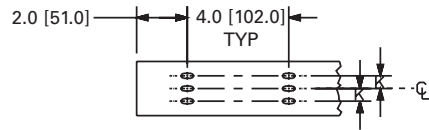


## Mounting Hole Dimensions

### For 1.0" and 1.5" Width Duct



### For 2.0", 2.5", 3.0" and 4.0" Width Duct



**NOTE:** Scoreline at base  
 A¹ and A² equal width of the base.  
 B¹ and B² equal overall height.  
 Dimensions in parenthesis are metric.

DUCT SIZE (W X H)	DIMENSIONS - Inches (mm)								K	T
	A1	A2	B1	B2	C	D	H	ON CENTERLINE		
<b>1 X 2</b> (25.4) (50.8)	1.25 (31.8)	1.14 (28.8)	2.13 (54.0)	2.06 (52.3)	1.25 (31.8)	1.94 (49.3)	2.00 (50.8)	ON CENTERLINE	0.08 (2.0)	
<b>1 X 3</b> (25.4) (76.2)	1.25 (31.8)	1.14 (28.8)	3.13 (79.4)	3.06 (77.7)	1.25 (31.8)	2.94 (74.7)	3.00 (76.2)		0.10 (2.4)	
<b>1 X 4</b> (25.4) (101.6)	1.25 (31.8)	1.14 (28.8)	4.08 (103.6)	4.06 (103.1)	1.25 (31.8)	3.90 (99.1)	4.00 (101.6)		0.11 (2.7)	
<b>1.5 X 2</b> (38.1) (50.8)	1.75 (44.5)	1.64 (41.5)	2.12 (53.9)	2.06 (52.3)	1.75 (44.5)	1.94 (49.3)	2.00 (50.8)		0.08 (2.0)	
<b>1.5 X 3</b> (38.1) (76.2)	1.75 (44.5)	1.64 (41.5)	3.12 (79.3)	3.06 (77.7)	1.75 (44.5)	2.93 (74.4)	3.00 (76.2)		0.10 (2.4)	
<b>1.5 X 4</b> (38.1) (101.6)	1.75 (44.5)	1.64 (41.5)	4.12 (104.5)	4.07 (103.3)	1.75 (44.5)	3.92 (99.6)	4.00 (101.6)		0.11 (2.7)	
<b>2 X 2</b> (50.8) (50.8)	2.25 (57.2)	2.14 (54.2)	2.10 (53.4)	2.06 (52.3)	2.25 (57.2)	1.93 (49.0)	2.00 (50.8)	0.50 (12.7)	0.08 (2.0)	
<b>2 X 3</b> (50.8) (76.2)	2.25 (57.2)	2.14 (54.2)	3.12 (79.3)	3.06 (77.8)	2.25 (57.2)	2.93 (74.4)	3.00 (76.2)	0.50 (12.7)	0.10 (2.4)	
<b>2 X 4</b> (50.8) (101.6)	2.25 (57.2)	2.14 (54.2)	4.09 (103.9)	4.06 (103.2)	2.25 (57.2)	3.92 (99.6)	4.00 (101.6)	0.50 (12.7)	0.11 (2.7)	
<b>2.5 X 3</b> (63.5) (76.2)	2.75 (69.9)	2.64 (67.1)	3.08 (78.2)	3.06 (77.7)	2.75 (69.9)	2.91 (73.9)	3.00 (76.2)	0.73 (18.4)	0.10 (2.5)	
<b>3 X 2</b> (76.2) (50.8)	3.25 (82.6)	3.14 (79.8)	2.09 (53.0)	2.07 (52.5)	3.25 (82.6)	1.92 (48.8)	2.00 (50.8)	1.00 (25.4)	0.08 (2.0)	
<b>3 X 3</b> (76.2) (76.2)	3.25 (82.6)	3.14 (79.8)	3.11 (78.9)	3.07 (77.9)	3.25 (82.6)	2.92 (74.2)	3.00 (76.2)	1.00 (25.4)	0.10 (2.4)	
<b>3 X 4</b> (76.2) (101.6)	3.25 (82.6)	3.14 (79.8)	4.11 (104.3)	4.07 (103.4)	3.25 (82.6)	3.91 (99.3)	4.00 (101.6)	1.00 (25.4)	0.11 (2.7)	
<b>4 X 2</b> (101.6) (50.8)	4.25 (108.0)	4.14 (105.2)	2.11 (53.5)	2.07 (52.5)	4.25 (108.0)	1.92 (48.8)	2.00 (50.8)	1.50 (38.1)	0.08 (2.0)	
<b>4 X 3</b> (101.6) (76.2)	4.25 (108.0)	4.14 (105.2)	3.10 (78.7)	3.07 (77.9)	4.25 (108.0)	2.91 (73.9)	3.00 (76.2)	1.50 (38.1)	0.10 (2.5)	
<b>4 X 4</b> (101.6) (101.6)	4.25 (108.0)	4.14 (105.2)	4.10 (104.1)	4.07 (103.3)	4.25 (108.0)	3.90 (99.1)	4.00 (101.6)	1.50 (38.1)	0.11 (2.7)	

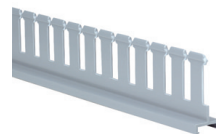
## PANDUCT® Installation Tools & Accessories



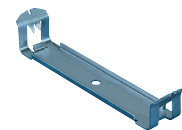
**DCT - Cutting Tool**



**TNR - Nylon Rivet Installation Tool**



**Divider Walls**



**Snap-Clip Mounting Bracket**

## Everywhere you need us!

*PANDUIT*® worldwide manufacturing and distribution give you ready access to all the products you need to bundle, route, insulate, terminate, identify and speed installation.

**Quality products. Innovative designs. World class service.**

- Cable Ties
- Wiring Accessories
- Abrasion Protection Products
- Stainless Steel Products
- Terminals
- Power Connectors
- Surface Raceway
- Wiring Duct
- Identification/Safety Products

.....The Complete *PANDUIT* Solution

All *PANDUIT* electrical products are warranted to be free from defects in material and workmanship at the time of sale but our obligation under this warranty is limited to the replacement of any product proved to be defective within 6 months (for product) or 90 days (for tools) from the date of delivery. Tool warranty is void if *PANDUIT* tools are modified, altered or misused in any way. Use of *PANDUIT* tooling with any product other than the specified *PANDUIT* products for which the tool was designed, constitutes misuse. Before using, user shall determine the suitability of the product for his intended use and user assumes all risk and liability whatsoever in connection therewith.

This warranty is made in lieu of and excludes all other warranties, expressed or implied. THE IMPLIED WARRANTIES OF MERCHANTABILITY AND FITNESS FOR A PARTICULAR USE ARE SPECIFICALLY

EXCLUDED. Neither seller nor manufacturer shall be liable for any other injury, loss or damage, whether direct or consequential, arising out of the use of, or the inability to use, the product.

The information contained in this literature is based on our experience to date and is believed to be reliable. It is intended as a guide for use by persons having technical skill at their own discretion and risk. We do not guarantee favorable results or assume any liability in connection with its use. Dimensions contained herein are for reference purposes only. For specific dimensional requirements consult the factory. This publication is not to be taken as a license to operate under, or a recommendation to infringe any existing patents. This supersedes and voids all previous literature, etc.



**For Pricing and Further Information — Contact your local *PANDUIT* Distributor or Sales Office**

**PANDUIT CORP.**  
Tinley Park, Illinois, USA

**PANDUIT CANADA**  
140 Amber Street  
Markham, Ontario L3R 3J8

**For Customer Service, contact**

Phone: 800-777-3300  
Fax: 708-532-1811

**For Technical Support, contact**

Phone: 866-405-6654  
Email: [ncginfo@panduit.com](mailto:ncginfo@panduit.com)  
Website: [www.panduit.com/eg](http://www.panduit.com/eg)

WORLDWIDE SUBSIDIARIES AND SALES OFFICES

© *PANDUIT* Corp. 2002 ALL RIGHTS RESERVED

SA-WDCB1007A  
Printed in U.S.A.