

Inlet for PCB mounting, fuse 1-/2-pole, line switch 2-pole

Standard or Medical Fuse drawer



new



C14



70° C



### Description

- Panel Mount:  
Screw-on mounting on PCB from rear-side
- 3 Functions:  
Inlet Protection class I, Line switch 2-pole, Fuseholder for fuse-links 5 x 20 mm 1- or 2-pole
- PCB solder terminals
- Alternative: version with line filter [DD22](#)
- With cover on rear-side

### Characteristics

- Ultra-compact design. Ideal for low profile designs
- All single elements are already wired
- For added safety "Extra-Safe" fuse drawers are available  
Fuse drawer meets requirements of medical standard IEC/EN 60601-1  
The fuse drawer can only be opened with the aid of a tool  
The fuseholder is accessible from the equipment front
- Ideal for application with high transient loads
- Qualified for use in equipment according IEC/EN 60950

### Other versions on request

- Fuse drawer 1-pole, plus spare fuse case
- Fuse drawer 2-pole, with shorting bar
- Other rocker marking
- Line switch 1-pole
- Protection class II, 70°C

### Weblinks

[Approvals](#), [RoHS](#), [CHINA-RoHS](#), [e-Store](#), [SCHURTER-Stock-Check](#), [Distributor-Stock-Check](#)

### Technical Data

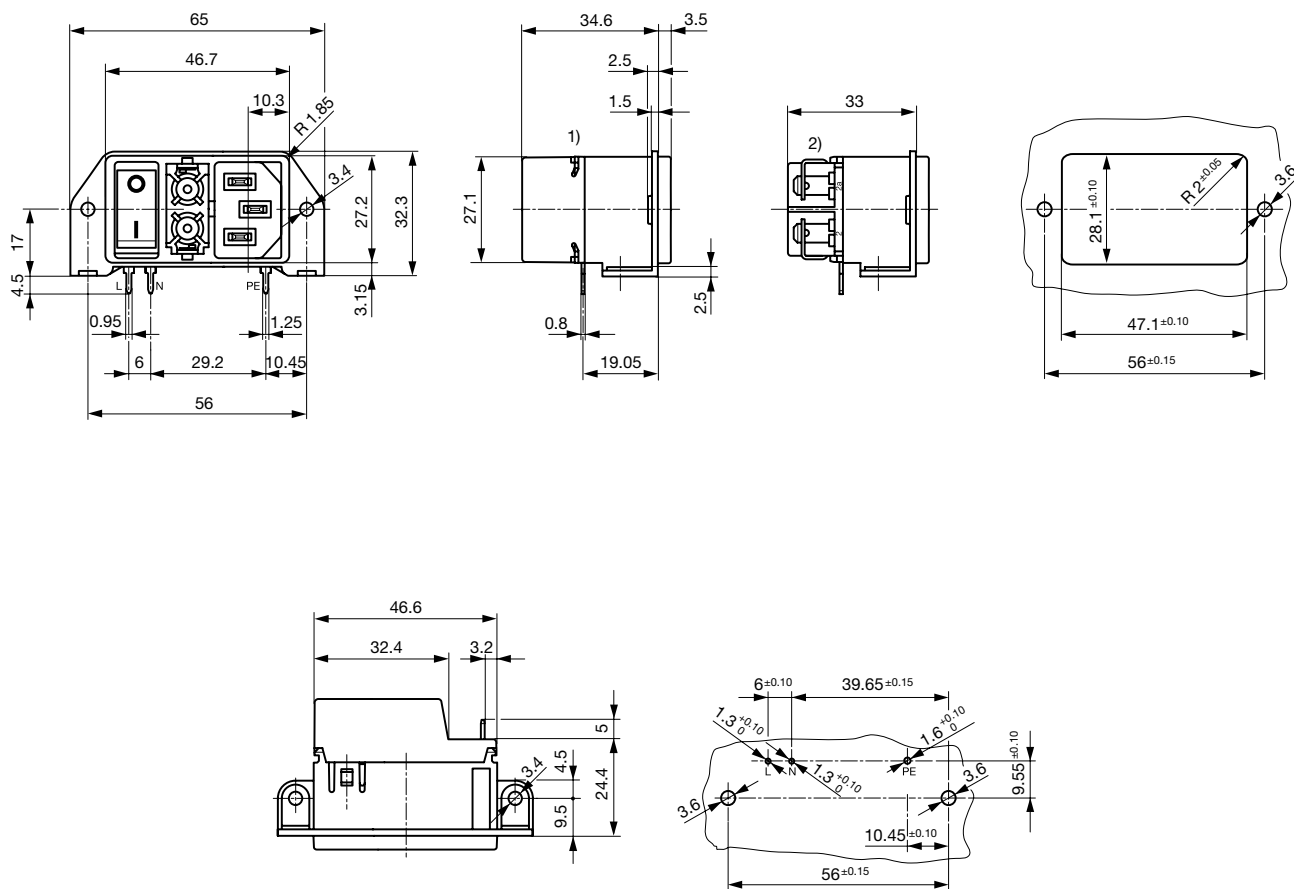
|                           |   |
|---------------------------|---|
| Ratings IEC               | 10 A / 250 VAC; 50 Hz   |
| Ratings UL/CSA            | 8 A / 125 VAC; 60 Hz  |
| Dielectric Strength       | > 2.5 kVAC between L-N<br>> 3 kVAC between L/N-PE<br>(1 min/50 Hz)            |
| Allowable Operation Temp. | -25 °C to 85 °C   |
| Degree of Protection      | from front side IP 40 acc. to IEC 60529                                       |
| Protection Class          | Suitable for appliances with protection class I or II acc. to IEC 61140       |
| Terminal                  | For PCB mounting 3 mm, Ground terminal, additional quick connect 4.8 x 0.8 mm |
| Panel Thickness s         | Screw-on: max 3 mm<br>Mounting screw torque max 0.5 Nm                        |
| Material: Housing         | Thermoplastic, black, UL 94V-0  |

|                                   |   |
|-----------------------------------|---|
| Appliance-Inlet /-Outlet          | C14 acc. to IEC/EN 60320-1<br>UL 498, CSA C22.2 no. 42 (for cold condition) pin-temperature 70 °C, 10 A, Protection class I |
| Fuseholder                        | 1 or 2 pole, Shocksafe category PC2 acc. to IEC 60127-6, for fuse-links 5 x 20 mm   |
| Rated Power Acceptance @ Ta 23 °C | 5 x 20: 2 W (1 pole)/ 1.6 W (2-pole) per pole   |
| Power Acceptance @ Ta > 23 °C     | Admissible power acceptance at higher ambient temperature see derating curves   |
| Line Switch                       | Rocker switch 2-pole, non-illuminated or illuminated, acc. to IEC 61058-1<br><a href="#">Technical details</a>              |

## Dimensions

Screw version

Length | 65 mm



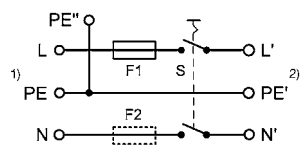
1) with cover

2) without cover

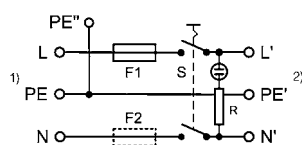
For grounding additional quick connect terminal 4.8 x 0.8 mm

## Diagrams

non illuminated

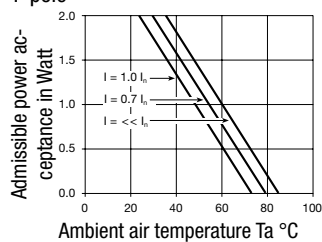
1) Line  
2) Load

illuminated

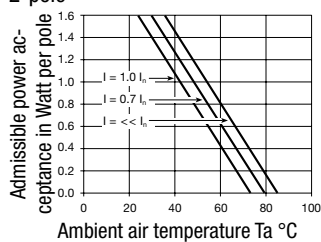
1) Line  
2) Load

## Derating Curves for Fuseholders

1-pole



2-pole



**Variants**[Distributor-Stock-Check](#) | [SCHURTER-Stock-Check](#) | [e-Store](#)

Fuse drawer must be ordered separately (see accessories).

Fingergrasp and Extra Safe. The same drawer as used by type KEA.

| Fuseholder | Line Switch | Illumination    | Color | Order Number   |
|------------|-------------|-----------------|-------|----------------|
| 1 pole     | 2-pole      | non-illuminated | -     | DD21.0111.1111 |
| 1 pole     | 2-pole      | illuminated     | red   | DD21.0113.1111 |
| 1 pole     | 2-pole      | illuminated     | green | DD21.0114.1111 |
| 2-pole     | 2-pole      | non-illuminated | -     | DD21.0121.1111 |
| 2-pole     | 2-pole      | illuminated     | red   | DD21.0123.1111 |
| 2-pole     | 2-pole      | illuminated     | green | DD21.0124.1111 |

**Packaging unit** 40 Pcs**Required Accessory****Description****Fusedrawer 2**

Fusedrawer with and without voltage selector insert