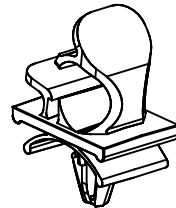
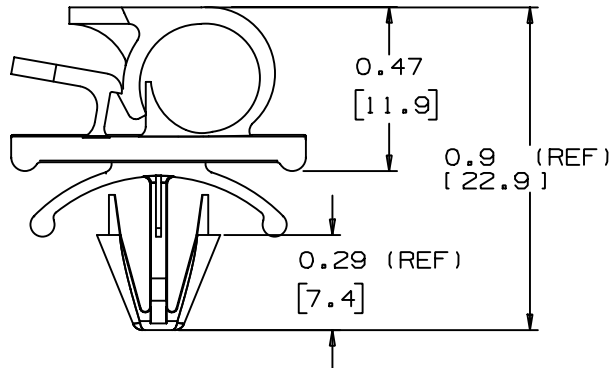
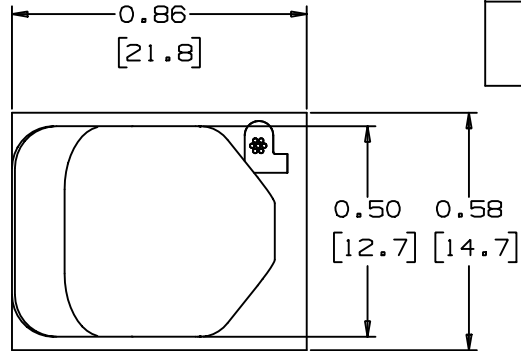


THIS COPY IS PROVIDED ON A RESTRICTED BASIS AND IS NOT TO BE USED IN ANY WAY DETRIMENTAL TO THE INTERESTS OF PANDUIT CORP.



SCALE: FULL

NOTES:
* 1) SEE CURRENT PRICE SHEET FOR PART NUMBER SUFFIX DESIGNATION, FOR PACKAGE SIZE.

PANDUIT PART NUMBER*	MAXIMUM CABLE DIA. in. (mm)	WEIGHT lbs. (g)/100pcs	HOLE SIZE DIA. RANGE	PANEL THK. RANGE
LWC25H25	0.25 [6.4]	0.41 [186]	3/16"-1/4" [5-6]	.025-.105 [0.5-3]

DIMENSIONS IN BRACKETS ARE METRIC [mm]

CAD FILENAME/LAYERS

G00165BA_DC_03

PANDUIT

CORP.

TINLEY PARK, ILLINOIS

LWC25H25, LATCHING WIRE CLIP

3	2-4-99	CGSM	ADDED REF DIMENSIONS. UPDATED FILE NAME.	GB0165BA	3				
2	10/20/95	CBJ	REVISED HOLE SIZE & PANEL THICKNESS RANGE	GB0165BA	2				
1	2/21/95	KLN	CORRECTED WEIGHT, WAS 1.88g NOW 186g	GB0165BA	1				
R	7/26/93	KLN	INITIAL RELEASE	GB0165BA	R				
REV	DATE	BY	CHK	DESCRIPTION	ECN - R	CUST	SUP		

UNLESS OTHERWISE SPECIFIED,
DIMENSIONAL TOLERANCES ARE:
(.X) ±0.05 (1.3) (.XXX) ±0.010 (0.25)
(.XX) ±0.02 (0.5) ANGLES ± 5°

UNLESS OTHERWISE SPECIFIED,
ALL DIMENSIONS ARE GIVEN
IN INCHES, THIRD ANGLE PROJECTION.

DRAWN BY KLN

MAT'L:

SCALE

2X

DATE 7/26/93

NYLON 6/6

DRAWING NO.

GB0165BA

DWG

A

SIZE