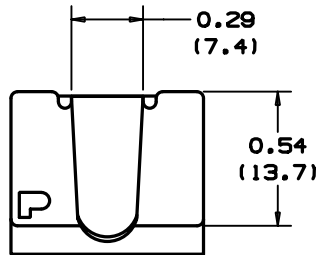


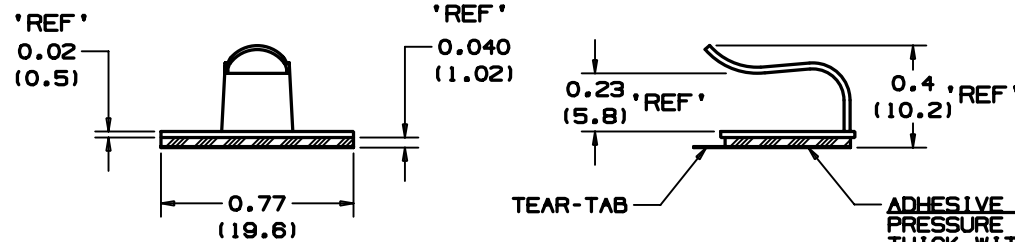
THIS COPY IS PROVIDED ON A RESTRICTED BASIS AND IS NOT TO BE USED IN ANY WAY DETRIMENTAL TO THE INTERESTS OF PANDUIT CORP.

NO WARRANTY, EXPRESSED OR IMPLIED, IS MADE BY PANDUIT WITH RESPECT TO ADHESIVE BOND PERFORMANCE. AMONG OTHER THINGS, THE CONDITIONS UNDER WHICH THESE MOUNTS MAY BE APPLIED AND/OR THE SURFACE TO WHICH THEY MAY BE APPLIED ARE BEYOND PANDUIT'S CONTROL.



ACTUAL SIZE

PANDUIT * PART NO.	MAX. BUNDLE DIAMETER inches (mm)	WEIGHT lb(g)/100 pcs.
MACC25-A	0.25 (6.3)	0.40 (178)



TEAR-TAB

ADHESIVE BACKING

PRESSURE SENSITIVE FOAM TAPE 0.040 (1.02) THICK WITH RUBBER ADHESIVE AND PROTECTIVE LINER. MOUNT IS DESIGNED TO SUPPORT 0.21 lb. (95.3g) MAXIMUM WEIGHT ON A CLEAN, DRY, SMOOTH, GREASE-FREE SURFACE.

NOTES:

- * 1) SEE CURRENT PRICE SHEET FOR PART NUMBER SUFFIX DESIGNATION AND PACKAGE SIZE.
- 2) TO APPLY MOUNT: a) REMOVE PROTECTIVE LINER, b) PLACE IN DESIRED LOCATION, c) APPLY PRESSURE TO MOUNT.
- 3) MATERIAL:
G-90 PRE-GALVANIZED COMMERCIAL GRADE LOW CARBON STEEL -- PER ASTM A 653 STEEL SHEET, ZINC COATED (GALVANIZED) BY THE HOT DIP PROCESS.

(DIMENSIONS IN PARENTHESES ARE IN METRIC.)

CHG FILENAME/LAYERS

GB0239HH_PB_MACC25_02

PANDUIT

CORP.

TINLEY PARK, ILLINOIS

MACC25-A
METAL ADHESIVE CORD CLIP

REV	DATE	BY	CHK	DESCRIPTION	ECN	R	CUST	SUP	UNLESS OTHERWISE SPECIFIED, DIMENSIONAL TOLERANCES ARE: (.X) ±0.1(2.5) (.XX) ±0.02(0.5) (.XX) ±0.05(1.3) ANGLES ± 5°	UNLESS OTHERWISE SPECIFIED, ALL DIMENSIONS ARE GIVEN IN INCHES, THIRD ANGLE PROJECTION.
2	2/19/03	JAD		REVISED MATERIAL CALLOUT, ADDED NOTE 3	GB0239HH	2			DRAWN BY LGG	SCALE NOT TO SCALE
1	5/10/02	LGG		CHG TAPE NOTE FOR SUPPORT, WAS .19(98g).	GB0239HH	1			DATE 6/07/01	DRAWING NO. GB0239HH
R	6/07/01	LGG		REPLACING ORIGINAL SS-20007	GB0239HH	R			CHK'D	DWG A SIZE
REV	DATE	BY	CHK	DESCRIPTION	ECN	R	CUST	SUP	DATE	CHK'D

SEE NOTE 3