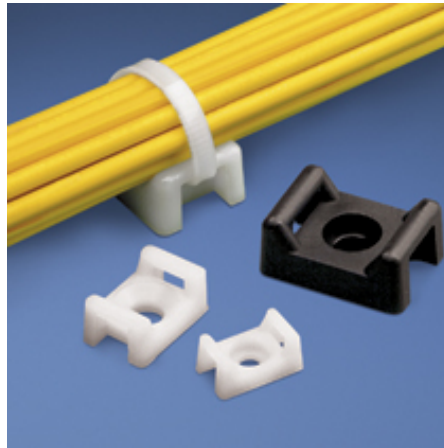




TM2S6-C



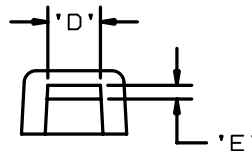
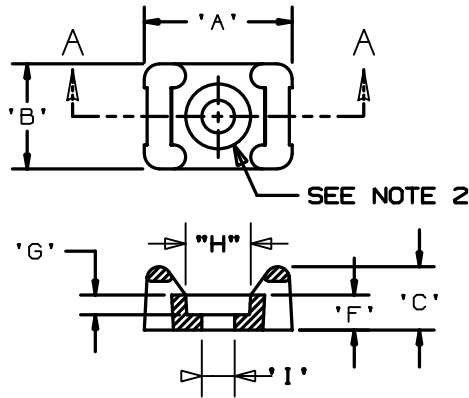
- Unique cradle design provides maximum stability for cable bundle
- Low profile design keeps bundle close to mounting surface where overhead space is limited
- ‡Cable tie cross section sizes: M = Miniature, I = Intermediate, S = Standard, HS = Heavy Standard, LH = Light-Heavy

■ Part Number	TM2S6-C
■ RoHS Compliancy Status	Compliant
■ Part Description	Cable Tie Mount - Screw Applied
■ Product Type	Cable Tie Mounts - Screw / Rivet Mounted
■ Material	Nylon 6.6
■ Color	Natural
■ UL Recognized	E136577
■ Height (In.)	.28
■ Height (mm)	7.0
■ Length (In.)	.63
■ Length (mm)	16.0
■ Width (In.)	.43
■ Width (mm)	10.8
■ CE Compliant	CT-ACC2 / 10.96
■ Environment	Indoors
■ Flammability Rating	UL94 V-2
■ Hole Diameter (In.)	.15
■ Hole Diameter (mm)	3.8
■ Max. Bundle Diameter (mm)	4.8
■ Mounting Method	#6 (M3) screw
■ Pricing Description	Cable Tie Mount, .43" (10.9mm)W, #6 Screw (M3), Nylon
■ Screw Size	#6 (M3)
■ Screw Size Metric	M3
■ Used With Cable Ties	M, I, S
■ Min. Order UOM	PC
■ Min. Order Qty.	100

THIS COPY IS PROVIDED ON A RESTRICTED BASIS AND IS NOT TO BE USED IN ANY WAY DETRIMENTAL TO THE INTERESTS OF PANDUIT CORP.

PANDUIT PART NO.*	MAT'L SUFFIX	RECOMMENDED FASTENER	'A'	'B'	'C'	'D'	'E'	'F'	'G' (REF)	'H' (REF)	'I' (REF)	USE WITH THESE CABLE TIE CROSS SECTIONS	WEIGHT (g) lbs/100 pcs.
TM2S6	NONE -0 -30 -69 -120	#6 (M3) SCREW							0.090 [2.3]	0.286	0.151	MINIATURE INTERMEDIATE STANDARD	0.126 (57.0)
TM2S8	NONE -0 -30 -69	#8 (M4) SCREW	0.630 [16.000]	0.425 [10.795]	0.275 [6.985]	0.215 [5.460]	0.060 [1.525]	0.155 [3.937]	0.105 [2.7]	0.332	0.176		0.113 (51.5)

MAT'L SUFFIX	MATERIAL
NONE	NYLON 6/6
-0	WEATHER RESISTANT NYLON
-30	HEAT STABILIZED NYLON
-69	FLAME RETARDANT NYLON
-120	NYLON 12



SECTION A-A

- NOTES:
 *1. SEE CURRENT PRICE SHEET FOR PART NUMBER SUFFIX DESIGNATION FOR PACKAGE SIZE.
 2. HOLE DIMENSIONS SHOULD ACCOMMODATE SPECIFIED RECOMMENDED FASTENER.

DIMENSIONS IN BRACKETS ARE METRIC [mm]	
ORD FILENAME/LAYERS	G00239EM_PB_TM2S_A_06
PANDUIT CORP. TINLEY PARK, ILLINOIS	
TM2S - TIE MOUNT	
UNLESS OTHERWISE SPECIFIED, DIMENSIONAL TOLERANCES ARE: (.X) ±0.05 [1.3] (.XXX) ±0.010 [0.25] (.XX) ±0.02 [0.5] ANGLES ± 5°	UNLESS OTHERWISE SPECIFIED, ALL DIMENSIONS ARE GIVEN IN INCHES, THIRD ANGLE PROJECTION.
DRAWN BY: AJV	MAT'L: NONE
DATE: 12-17-86	SCALE: NONE
CHK'D:	DRAWING NO. G00239EM
	SIZE: A

REV	DATE	BY	CHK	DESCRIPTION	ECN	R	CUST	SUP
6	12-19-02	LGG		ADDED 120 MATERIAL BACK TO DRAWING	G00239EM	6		