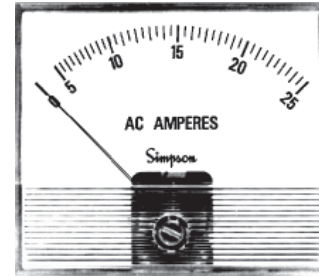




AC Current

True-View Style

- Clear, Acrylic Windows
- Optional Bezel Kits
- Special Colored Scales or Logos Available
- 62% Full Scale Accuracy
- Two Popular Sizes: 3-1/2" and 4-1/2"



Model Number	Meter Size	Movement
953	3-1/2"	Iron-Vane
954	4-1/2"	Iron-Vane

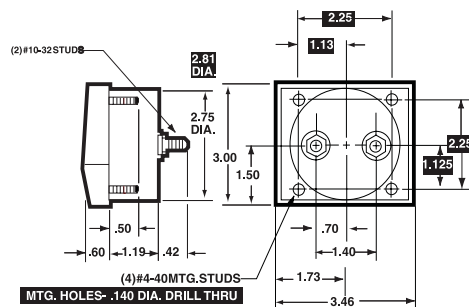
Simpson's Tru-View family of analog panel meters offers a modern, clear acrylic front lens, and a clean, open scale to update your panel design. Tru-View panel meters provide reliable measurement of AC current ranges between 1 and 300 amps or 10 and 500 millamps, and are available in 3-1/2 and 4-1/2 inch sizes. Simpson AC meters measuring current inputs between 5 and 50 amps can be ordered as self-contained units or as 5 amp panel meters to be used with an optional external transformer. Current inputs above

50 amps must be used with an external transformer. All units are guaranteed to $\pm 2\%$ full scale (F.S.) accuracy and meet American National Standards Institute specification ANSI C39.1. Attractive black satin, die cast bezels are available in both 3-1/2 and 4-1/2 inch sizes for behind-panel mounting. The iron-vane (magnetic damping) movement provides excellent readability under severe conditions where shock and vibration would destroy or limit the life of a standard movement.

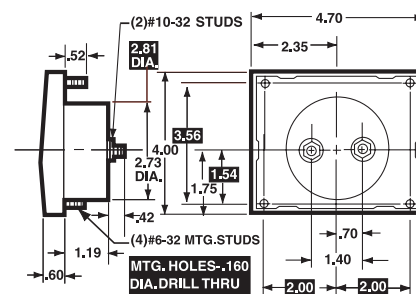
Dimensions and Compatibility

3-1/2"-Model 953

1 = Panel Meter Cut-out Dimensions



4-1/2"-Model 954



Compatibility Reference Table

Manufacturer	Size/Model	
	3-1/2"	4-1/2"
Crompton	225	227
Celebrity	363	364
Challenge	235	237
Clearvu		
Hoyt	3136	3146
3100	2036	2046
Custom	3136W	3146W
Window		
Modutec	3S-	4S-
S Series	3PB*	4PB
PB Series*		

Manufacturer	Size/Model	
	3-1/2"	4-1/2"
Triplett	330-G	430-G
G Series		
Weston	2034	2044
2000 Series		
Yokogawa	251-310	251-410
Horizon		

* Modutec uses a three-stud mount.

Specifications

Accuracy:	±2% F.S. (at 25° C 60 Hz sine wave)
Movement:	Iron-vane, magnetically damped
Suspension:	Pivot and jewel
Tracking:	±3%
Repeatability:	2%
Shielding:	Calibration is unaffected by stray magnetic field or panel mounting.
Response Time:	1.5 seconds maximum above 10mA.
Overload (1 sec.):	10 times F.S.
Overload (Continuous):	1.5 times F.S.

Dial:	Sharp clear scale. Each dial arc is calibrated to track the specific type of movement used.
Operating Temperature:	-4°F to +149°F (-20°C to +65°C)
Resistance:	± 15%
Case:	Clear plastic
Pointer:	Knife edge, black matte finish
Scale Length:	Model 953: 2.94" (74.68mm) Model 954: 3.53" (89.66mm)
Net Weight:	Model 953: 6oz (.17kg) Model 954: 8oz (.23kg)

Ordering Information

TV				
Size		Function		Range ≈ ohms
3	3-1/2"			
4	4-1/2"			
AC Milliamps (Iron-Vane Movement)	AMA	010	0-10 ACmA	1650
	AMA	050	0-50 ACmA	80
	AMA	100	0-100 ACmA	17.2
	AMA	150	0-150 ACmA	7.16
	AMA	250	0-250 ACmA	3.15
	AMA	500	0-500 ACmA	0.9
AC Amps (Iron-Vane Movement)	AAA	001	0-1 ACA	0.213
	AAA	1R5	0-1.5 ACA	0.105
	AAA	002	0-2 ACA	0.065
	AAA	003	0-3 ACA	0.028
	AAA	005	0-5 ACA	0.008
	AAA	010	0-10 ACA	0.004
	AAA	015	0-15 ACA	0.0025
	AAA	025	0-25 ACA	0.002
	AAA	030	0-30 ACA	0.0015
	AAA	050	0-50 ACA	0.001
	AAA	075	0-75 ACA	0.008
	AAA	100	0-100 ACA	0.008
	AAA	150	0-150 ACA	0.008
	AAA	200	0-200 ACA	0.008
	AAA	300	0-300 ACA	0.008

NOTE: AC current meters above 50 amps are 5 amp meters to be used with external current transformers. AC current meters between 5 and 50 amps can be supplied as self contained units (standard) or as 5 amp meters to be used with external current transformers (optional) from factory. See Accessory panel to the right.

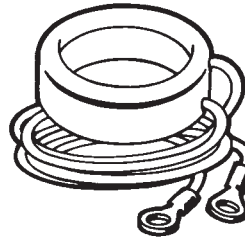
Function Reference Table

For your convenience, the table below lists Tru-View models for other electrical monitoring functions and page reference.

Function	Section	Page
AC Voltage	E	33
DC Current	E	53
DC Voltage	E	73

Accessories

Donut Transformer

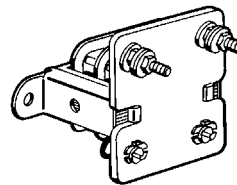


A Donut Current Transformer enables these current meters to monitor AC current up to 1000 amps. The Donut (also known as a "Toroid") is placed around one of the legs of the device being monitored, and emits up to a 5 amp signal. Each Donut Transformer, rated at 2 volt amps, comes with 2' long secondary leads.

Ordering Information

Range/Amps		Catalog Number
Primary	Secondary	
50	5	01293
75	5	01306
100	5	01297
150	5	01298
200	5	01299
250	5	01313
300	5	01300
400	5	01305
500	5	01301
600	5	02303
750	5	02459
1000	5	02304

Model 186 Current Transformer



Model 186 Current Transformers easily convert a current signal (up to 50 A) into a 0-10 AC volt signal and transmit the signal over a long distance. This allows remote monitoring of a process or application. These units can be coupled with a Donut Current Transformer if a high current rating (up to 1000 amps) is to be monitored at a remote location.

Ordering Information

Range	VA	Catalog Number
0-5 amp	0.75	01312
0-10 amp	1.45	01314
0-15 amp	1.05	01315
0-20 amp	1.04	01316
0-25 amp	1.50	01317
0-30 amp	1.10	01318
0-40 amp	1.09	01319
0-50 amp	1.90	01321
0-100mA	0.50	01295
0-500mA	0.53	01304