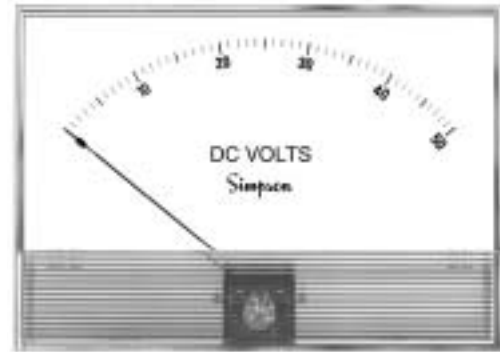




DC Voltage

True-View Style

- Clear, Acrylic Windows
- Optional Bezel Kits
- Special Colored Scales or Logos Available
- $\pm 2\%$ Full Scale Accuracy
- Five Popular Sizes: 1-1/2", 2-1/2", 3-1/2", 4-1/2", 4x6"



Model Number	Size	Meter Movement
921	1-1/2"	Small Core Magnet
922	2-1/2"	Annular, Self-Shielding
923	3-1/2"	Annular, Self-Shielding
924	4-1/2"	Annular, Self-Shielding
926	4x6"	Annular, Self-Shielding

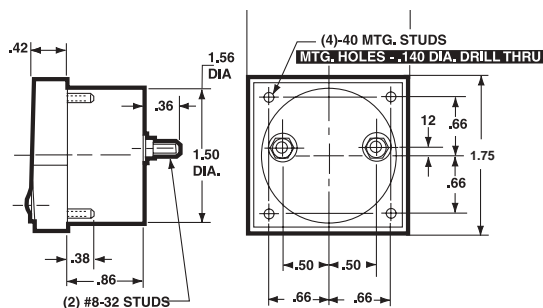
Simpson's Tru-View family of analog panel meters offers a modern, clear acrylic front lens, and a clean, open scale to update your panel design. Tru-View panel meters provide reliable measurement of DC volts from 1 to 1000 volts or 50 to 500 millivolts, and are available in five popular sizes including: 1-1/2", 2-1/2", 3-1/2", 4-1/2", and 4x6". Higher range inputs require a Model 183 external multiplier (see Accessory Section). All meters are guaranteed to $\pm 2\%$ full scale (F.S.)

accuracy and meet American National Standards Institute specification ANSI C39.1. Attractive black satin, die cast bezels are available in both 3-1/2 and 4-1/2 inch sizes for behind panel mounting. The annular movement with rugged spring-backed pivot and jewel suspension is self-shielded from stray magnetic fields. This style meter is ideal for many other electrical functions. See the "Function Reference Table."

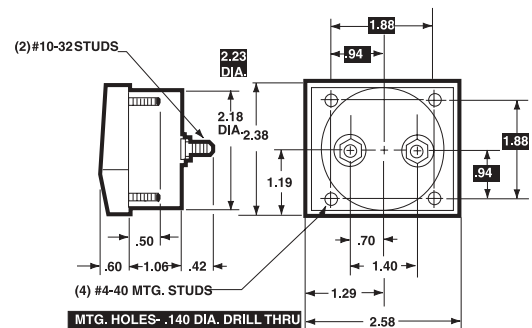
Dimensions and Compatibility

1 = Panel Meter Cut-out Dimensions

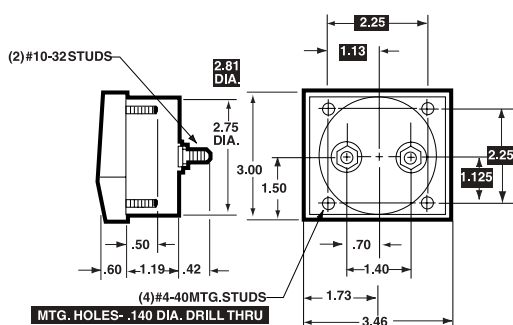
1-1/2"-Model 921



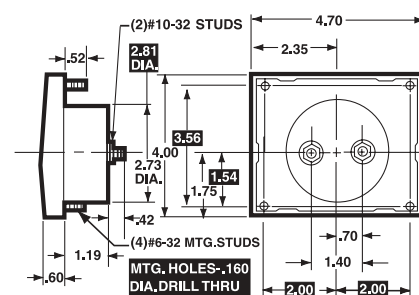
2-1/2"-Model 922



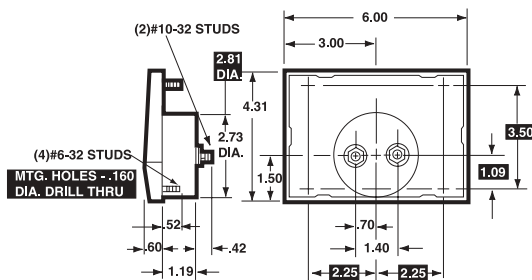
3-1/2"-Models 923



4-1/2"-Model 924



4x6"-Models 926



Compatibility Reference Table

Manufacturer	Size/Model		
	2-1/2"	3-1/2"	4-1/2"
Crompton			
Celebrity	213	215	217
Challenger	362	363	364
Clearvu	223	225	227
Hoyt			
3100	3125	3135	3145
Custom	2025	2035	2044
Window	3125W	3135W	3145W
Modutec			
S Series	2S-	3S-	4S-
PB Series	2PB*	3PB*	4PB
Triplett G Series	220-G	320-G	420-G
Weston 2000 Series	2021	2031	2041
Yokogawa Horizon	251-210	251-310	251-410

*Modutec uses a three-stud mount.

Specifications

Accuracy:	±2% F.S.
Movement:	Annular, self-shielding
Suspension:	Pivot and jewel
Tracking:	±3%
Repeatability:	2%
Shielding:	Simpson's Self Shielding movement; calibration is unaffected by stray magnetic field or mounting.

Response Time: 1.5 seconds maximum above 10mA

Overload

(1 sec.): 10 times F.S.

**Overload
(Continuous):** 1.5 times F.S.

Dial: Sharp clear scale. Each dial arc is calibrated to track the specific type of movement used.

Operating

Temperature: -4°F to +149°F (-20°C to +65°C)

Resistance: $\pm 15\%$

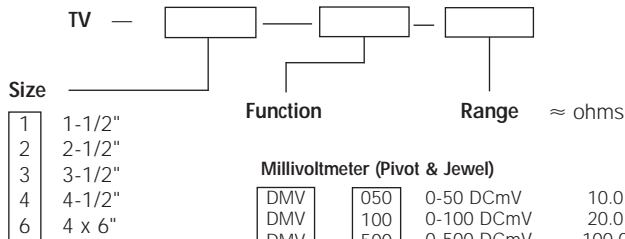
Case: Plastic

Pointer: Knife-edge, black finish

Scale Length: Model 921: 1.56" (39.62mm); Model 922: 2.40" (60.96mm)
Model 923: 3.27" (83.06mm); Model 923: 2.94" (74.68mm)
Model 924: 3.92" (99.57mm); Model 924: 3.53" (89.66mm)
Model 926: 5.45" (138.43mm)

Net Weight: Model 921: 1.5oz (0.04kg); Model 942: 4oz (0.11kg)
Model 923 & 923: 6oz (0.17kg)
Models 924 & 924: 8oz (0.23kg); Model 926: 12oz (0.34kg)

Ordering Information



External multipliers (not included), Model 183 required with 1-1/2" DC meters 500 volts or higher; on 2-1/2" DC meters, 750 volts or higher; and on 3-1/2", 4-1/2" and 4 x 6" meters, 1000 volts or higher.

Voltmeter (Pivot & Jewel)

DVV	001	0-1 DCV	
DVV	005	0-5 DCV	
DVV	008	0-8 DCV	
DVV	010	0-10 DCV	
DVV	015	0-15 DCV	
DVV	020	0-20 DCV	
DVV	025	0-25 DCV	All
DVV	030	0-30 DCV	1000
DVV	050	0-50 DCV	ohms
DVV	100	0-100 DCV	per
DVV	150	0-150 DCV	volt
DVV	200	0-200 DCV	
DVV	250	0-250 DCV	
DVV	300	0-300 DCV	
DVV	500	0-500 DCV	2000 W/V
DVV	750	0-750 DCV	2000 W/V
DVV	11TH	0-1000 DCV	2000 W/V

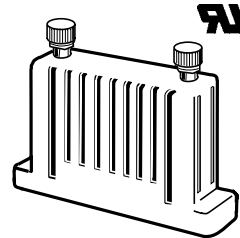
Function Reference Table

For your convenience, the table below lists Tru-View models for other electrical monitoring functions with page number reference.

Function	Section	Page
AC Current	E	13
AC Voltage	E	33
DC Current	E	53

Accessories

Model 183 Multiplier



The Model 183 external multiplier enables a voltage meter to monitor up to 5000 DC volts. An external multiplier is used with a 500 μA instrument that is scaled proportionally to your measurement range. The model 183 is included with all 1-1/2" meters 500 volts or higher, with all 2-1/2" DC voltage meters 750 volts or higher; and with 3-1/2" and 4-1/2" DC voltage meters 1000 volts or higher. All others are self-contained. Simpson's external multipliers are available for immediate delivery from your local distributor. Other intermediate ranges are available at minimum quantities on special order.

Ordering Information

DC Volts 200 Ohms/Volt

Range	Multiplier Resistance Megohms	Meter Sensitivity DC μ A	Catalog Number
0-500	1	500	08552
0-1000	2	500	08554
0-2000	4	500	08557
0-4000	8	500	08560
0-5000	10	500	08561