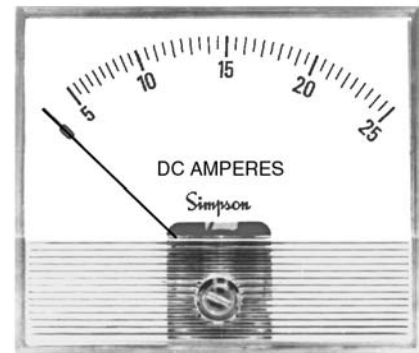




- Clear, Acrylic Windows
- Optional Bezel Kits
- Special Colored Scales or Logos Available
- $\pm 2\%$  Full Scale Accuracy
- Five Popular Sizes: 1-1/2", 2-1/2", 3-1/2", 4-1/2", and 4x6"



Model Number	Size	Meter Movement
921	1-1/2"	Annular
922	2-1/2"	Annular
923	3-1/2"	Annular
924	4-1/2"	Annular
926	4" x 6"	Annular

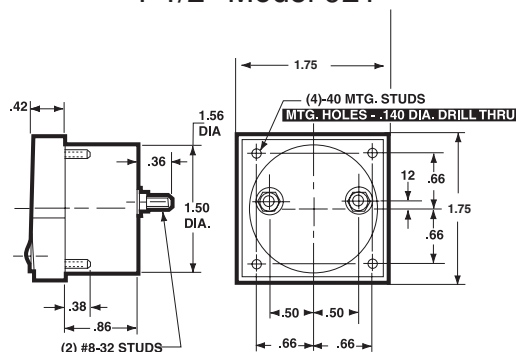
Simpson's Tru-View family of analog panel meters offers a modern, clear acrylic front lens, and a clean, open scale to update your panel design. Tru-View panel meters provide reliable measurement of DC current up through 500 amps and are available in five popular sizes including: 1-1/2", 2-1/2", 3-1/2", 4-1/2", and 4x6" sizes. High range inputs require external current shunts (see Accessory Section). All meters are guaranteed to  $\pm 2\%$  full scale (F.S.) accuracy and meet

American National Standards Institute specification ANSI C39.1. Attractive black satin, die cast bezels are available in 3-1/2 and 4-1/2 inch sizes for behind panel mounting. The annular movement with rugged spring-backed pivot and jewel or taut band suspensions is self-shielded from stray magnetic fields. This style meter is ideal for many other electrical functions. See the "Function Reference Table."

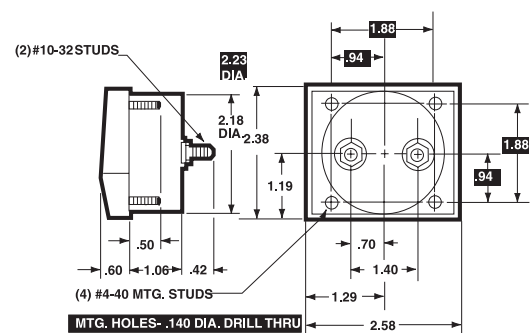
### Dimensions and Compatibility

1 = Panel Meter Cut-out Dimensions

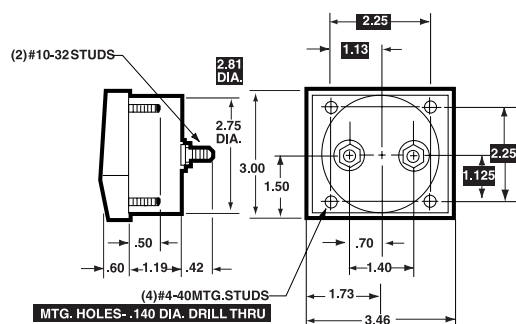
1-1/2"-Model 921



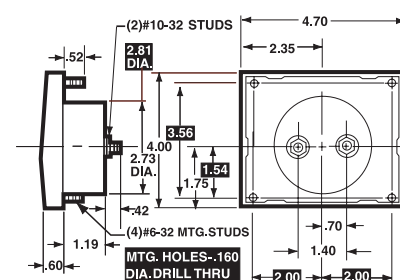
2-1/2"-Model 922



3-1/2"-Models 923

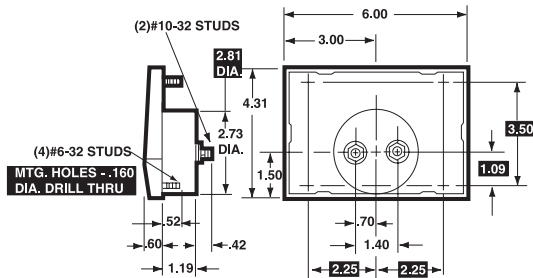


4-1/2"-Model 924



## Dimensions and Compatibility cont.

### 4x6"-Models 926



### Compatibility Reference Table

Manufacturer	Size/Model			
	1-1/2"	2-1/2"	3-1/2"	4-1/2"
Beede		2-PL	3-01	14
Crompton Celebrity		223	225	227
Challenger	361	362	363	364
Clearvu		233	235	237
Hoyt 3100	3115	3125	3135	3145
Custom	2015	2025	203	2045
Window	3115W	3125W	3135W	5
Modutec S Series	1S-	2S-	3S-	4S-
PB Series	1PB-	2PB-*	3PB-*	4PB
Triplett G Series	120-G	220-G	320-G	420-G
Weston 2000 Series		2021	2031	2041
Yokogawa Horizon	251-1XX	251-2XX	251-3XX	251-4XX

\*Modutec uses a three-stud mount.

## Specifications

Accuracy:	±2% F.S.
Movement:	Annular, self-shielding
Suspension:	Pivot and jewel or taut band
Tracking:	±3%
Response Time:	1.5 seconds maximum above 10mA.
Overload (1 sec.)	10 times F.S.
Overload (Continuous):	1.5 times F.S.
Shielding:	Calibration is unaffected by stray magnetic field or panel mounting.
Repeatability:	2% Pivot and jewel; 0.5% Taut band
Dial:	Sharp clear scale. Each dial arc is calibrated to track the specific type of movement used.
Operating Temperature:	-4°F to +149°F (-20°C to +65°C)

Resistance:	±15%
Case:	High density clear plastic
Pointer:	Knife-edge, black matte finish

Scale Length:	Model 921: 1.56" (39.62mm)
	Model 922: 2.40" (60.96mm)
	Model 923: 3.27" (83.06mm)
	Model 924: 3.92" (99.67mm)
	Model 926: 5.45" (138.43mm)

Net Weight:	Model 921: 1.5oz (.04kg)
	Model 922: 4oz (.11kg)
	Model 923: 6oz (.17kg)
	Model 924: 8oz (.22kg)
	Model 926: 12oz (.34kg)

## Ordering Information

TV	1	DMA	050
Size		Function	Range
1	1-1/2"		
2	2-1/2"		
3	3-1/2"		
4	4-1/2"		
6	4 x 6"		

### Microammeter (Taut Band)

Range	≈ ohms
TUA010 0-10 DCμA	4900
TUA015 0-15 DCμA	1960 (5500)*
TUA025 0-25 DCμA	1960
TUA050 0-50 DCμA	960
TUA100 0-100 DCμA	500
TUA200 0-200 DCμA	234

DCμA, T.B.: 1-1/2" size only available for ranges 50μA and above, 4x6" size only available for ranges 100μA and above.

\*Resistance for 1-1/2" sizes shown in ( )

### Milliammeter (Pivot and Jewel)

Range	≈ ohms
DMA001 0-1 DCmA	43
DMA003 0-3 DCmA	2.0
DMA005 0-5 DCmA	2.0 (20)*
DMA010 0-10 DCmA	10.0 (2.2)*
DMA015 0-15 DCmA	6.6 (2.2)*
DMA020 0-20 DCmA	5.0
DMA025 0-25 DCmA	4.0 (6.0)*
DMA050 0-50 DCmA	2.0 (3.0)*
DMA100 0-100 DCmA	1.0 (1.5)*
DMA150 0-150 DCmA	0.66(1.0)*
DMA200 0-200 DCmA	0.50 (.75)*
DMA250 0-250 DCmA	0.40 (.60)*
DMA300 0-300 DCmA	0.33 (.50)*
DMA500 0-500 DCmA	0.20 (.30)*
DMA750 0-750 DCmA	0.13

\*Resistance for 1-1/2" sizes shown in ( )

### Microammeter (Pivot and Jewel)

Range	≈ ohms
DUA100 0-100 DCμA	1800
DUA200 0-200 DCμA	1100
DUA500 0-500 DCμA	90 (190)*
DUA1H1 100-0-100 DCμA	1100
DUA5H5 500-0-500 DCμA	43

\*Resistance for 1-1/2" sizes shown in ( )  
DCμA, P&J: 0-50 DCμA range not available in 4x6" size.

\*1-1/2" sizes only - 10 ohms  
External current shunts (not included), 50mV drop, are required with 1-1/2" DC meters, above 10 amps; and on 2-1/2", 3-1/2", 4-1/2" and 4x6" DC meters above 50 amps.

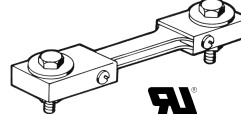
### Current meter (Pivot and Jewel)

Range	≈ ohms
DAA001 0-1 DCA	0.050
DAA002 0-2 DCA	0.025
DAA003 0-3 DCA	0.0166
DAA005 0-5 DCA	0.010
DAA010 0-10 DCA	0.005
DAA015 0-15 DCA	0.0033*
DAA020 0-20 DCA	0.0025*
DAA025 0-25 DCA	0.0020*
DAA030 0-30 DCA	0.0017*
DAA050 0-50 DCA	0.001*
DAA100 0-100 DCA	10.0*
DAA150 0-150 DCA	10.0*
DAA200 0-200 DCA	10.0*
DAA300 0-300 DCA	10.0*
DAA500 0-500 DCA	10.0*
DAA5T5 50-0-50 DCA	0.001

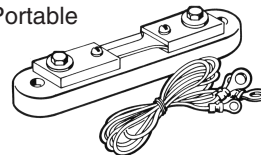
## Accessories

### External Portable and Switchboard Shunts

#### Switchboard



#### Portable



External shunts enable Tru-Vue style panel instruments to indicate higher DC current ranges. Either a portable or switchboard shunt is installed in series with the load and the source. They provide a DCmV drop which is sent to the Tru-Vue instrument. Simpson's external shunts are available for immediate delivery from your local distributor. Other intermediate ranges are available at minimum quantities on special order.

Each shunt includes 5' leads (0.065 V Resistance).

#### Switchboard Shunts ( 50mV )

Amps	Cat. Number
100	06500
150	06503
200	06504
250	06505
300	06506
400	06507
500	06508

#### Portable Shunts (50mV)

Amps	Cat. Number
1	06700
5	06703
10	06704
15	06705
25	06707
30	06708
50	06709
75	06711
100	06713
150	06714
200	06715

#### Portable Shunts (100mV)

Amps	Cat. Number
10	06716
100	06717

NOTE: 5' leads not included

## Function Reference Table

For your convenience, the table below lists Tru-Vue models for other electrical monitoring functions with page number reference.

Function	Section	Page
AC Current	E	13
AC Voltage	E	33
DC Voltage	E	73