

AMPHENOL PART NUMBER: U E 2 7 - A S 4 - X X X

SERIES  
UE27=RECEPTACLE

TYPE  
A=SERIES A

STYLE  
S=STACKED RIGHT ANGLE PCB TAIL

CONTACT & SHIELD PLATING OPTION

5=30 MICROINCHES [0.76 MICRONS] GOLD OVER NICKEL ON CONTACT MATING AREA.  
100 MICROINCHES [2.54 MICRONS] TIN PLATING ON CONTACT TAILS.  
7=GOLD FLASH OVER NICKEL ON CONTACT MATING AREA.  
100 MICROINCHES [2.54 MICRONS] TIN PLATING ON CONTACT TAILS.

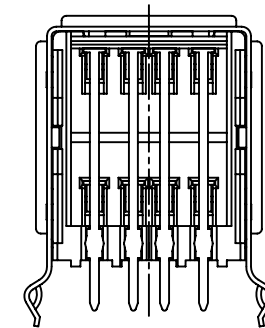
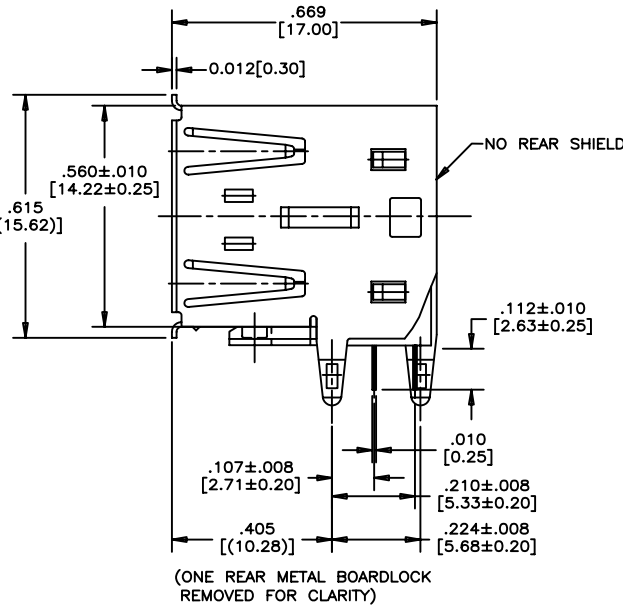
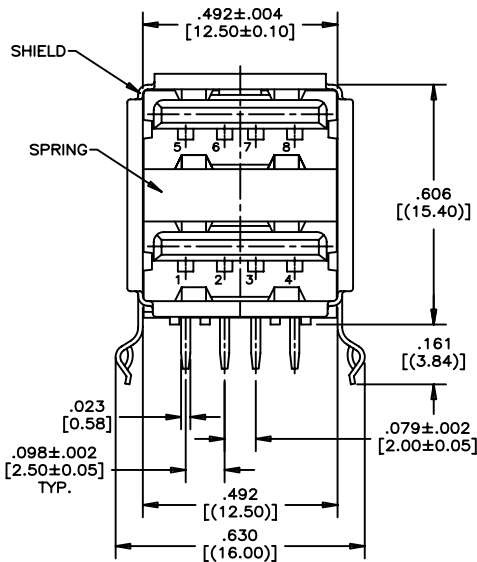
REVISIONS			
SYM	ZONE	ECN, ERN NO.	DATE APPRD.
B		PROPOSAL	DEC05/05 LCHAN

0= PBT HOUSING  
H=HIGH TEMP HOUSING

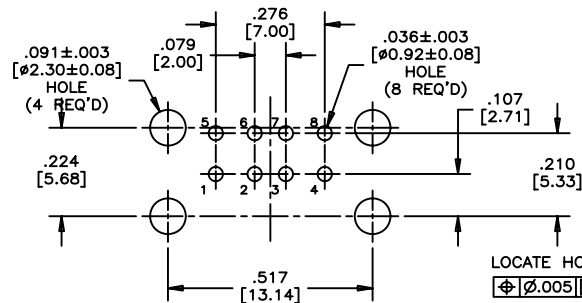
SHIELDING OPTION  
0=NO REAR SHIELD  
3=WITH REAR SHIELD (SEE SHEET 2 OF 2)

HOUSING COLOUR:  
1=BLACK  
2=BEIGE (AVAILABLE IS STANDARD TEMP ONLY)

NUMBER OF CONTACTS  
4=4 CONTACTS



SHIELDING OPTION #0  
WITHOUT REAR SHIELD



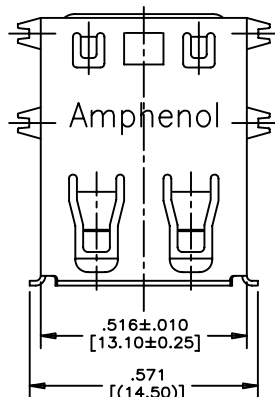
RECOMMENDED P.C.B. LAYOUT  
COMPONENT SIDE OF BOARD

LOCATE HOLES  
[Φ] 0.005 [0.13]  
POSITION DIMENSIONS  
ARE BASIC

THIS DOCUMENT CONTAINS PROPRIETARY INFORMATION AND SUCH INFORMATION  
MAY NOT BE DISCLOSED TO OTHERS FOR ANY PURPOSE OR USED FOR MANUFACTURING  
PURPOSES WITHOUT WRITTEN PERMISSION FROM AMPHENOL CANADA CORP.

MATERIAL -----	DRAWN Chigow	DATE DEC05/06	Amphenol Canada Corp.	
	DESIGNED			
	CHECKED LCHAN	DEC05/06		
	I. E. APPRD.			
FINISH -----	Q. A. APPRD.		TITLE UNIVERSAL SERIAL BUS (SERIES A) RECEPTACLE, STACKED, 4 CONTACTS PER PORT, RIGHT ANGLE PCB TAIL RoHS COMPLIANT	
	DWG. APPRD.			
	ENG. REL. NO.			
	REF. EAR12884			
	DIMENSIONS ARE IN mm	CODE ID. NO. 03554	DWG C	DRAWING NO. P-UE27-ASX4-XXX
			SCALE 4/1	WT. ----- SURF. ----- SHEET 1 OF 2

REV.  
B



# NOTES:

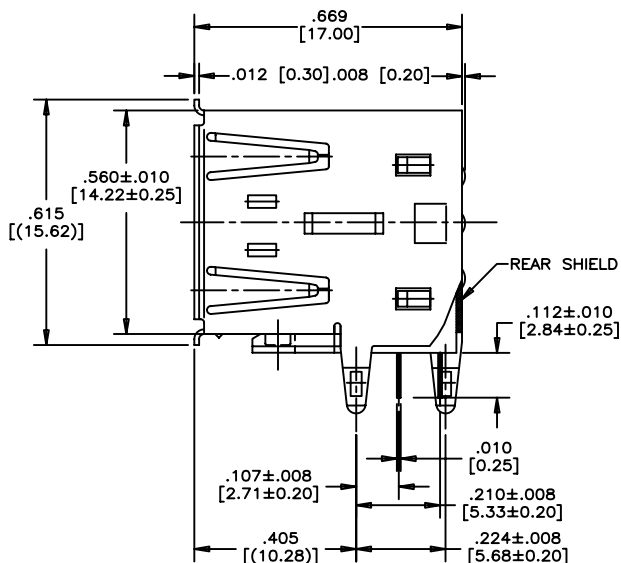
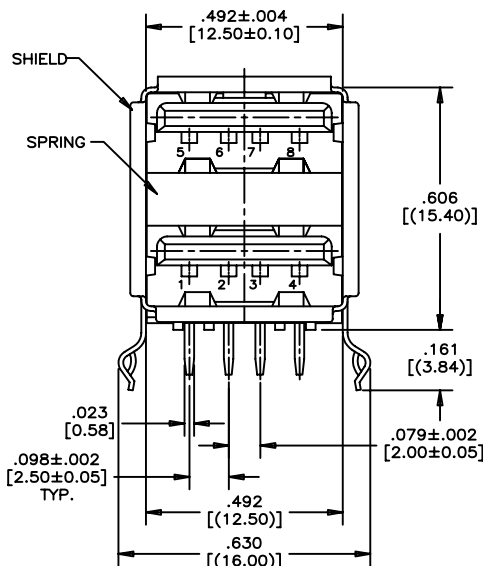
HOUSING: ENGINEERING THERMOPLASTIC,  
FLAMMABILITY UL94V-0.

CONTACTS: COPPER ALLOY.  
CONTACT PLATING AS FOLLOW: SEE AMPHENOL  
PART NUMBER SYSTEM FOR PLATING OPTIONS.

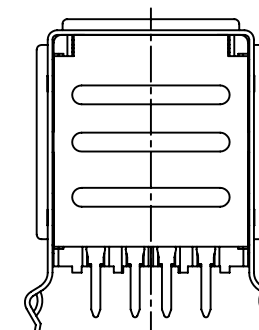
SHELL: COPPER ALLOY.  
PLATING: NICKEL OVER COPPER UNDERPLATE.

REAR SHELL: STEEL, NICKEL PLATED.

SPRING: PHOSPHOR BRONZE, NICKEL PLATED.



(ONE REAR METAL BOARDLOCK  
REMOVED FOR CLARITY)



**SHIELDING OPTION #3  
WITH REAR SHIELD**

THIS DOCUMENT CONTAINS PROPRIETARY INFORMATION AND SUCH INFORMATION  
MAY NOT BE DISCLOSED TO OTHERS FOR ANY PURPOSE OR USED FOR MANUFACTURING  
PURPOSES WITHOUT WRITTEN PERMISSION FROM AMPHENOL CANADA CORP.

MATERIAL	DRAWN	Chigow	DATE	DEC05/06	Amphenol Canada Corp.		
	DESIGNED						
FINISH	CHECKED	LCHAN	DATE	DEC05/06	TITLE		
	I. E. APPRD.						
	Q. A. APPRD.				UNIVERSAL SERIAL BUS (SERIES A) RECEPTACLE, STACKED, 4 CONTACTS PER PORT, RIGHT ANGLE PCB TAIL RoHS COMPLIANT		
	DWG. APPRD.						
	ENG. REL. NO.				DWG	DRAWING NO.	REV.
	REF. EAR12884						
	DIMENSIONS ARE IN	mm	CODE ID. NO.	03554	SCALE	4/1	WT. -----
					SURF. -----	SHEET	2 OF 2