

# RECTIFIERS

## High Efficiency, 2A

UES1104-1 供应商

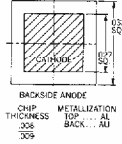
捷多邦, 专业 UES1104 厂, 24小时加急出货

UES1105  
UES1106

2

### FEATURES

- Very Low Forward Voltage (1.15V)
- Very Fast Recovery Times (50nSec)
- Small Size
- Convenient Package



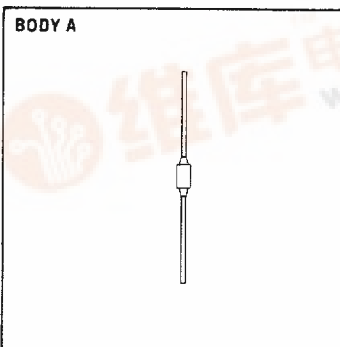
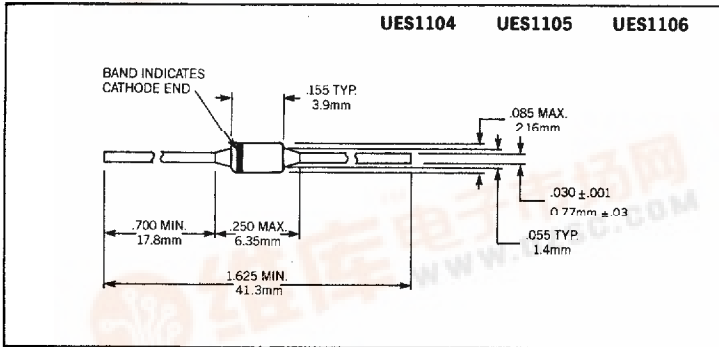
### DESCRIPTION

The UES1104 series is specifically designed for operation in power switching circuits operating at frequencies of at least 20 KHz.

### ABSOLUTE MAXIMUM RATINGS

Peak Inverse Voltage, UES1104	200V
Peak Inverse Voltage, UES1105	300V
Peak Inverse Voltage, UES1106	400V
Maximum Average DC Output Current, $I_O$	
@ $T_A = 25^\circ\text{C}$ (Free Air)	1A
@ $T_L = 50^\circ\text{C}$ , $L = \frac{3}{8}"$	.2A
Surge Current, 8.3mSec	20A
Thermal Resistance @ $L = \frac{3}{8}"$	38°C/W
Operating and Storage Temperature Range	-55°C to +150°C

### MECHANICAL SPECIFICATIONS



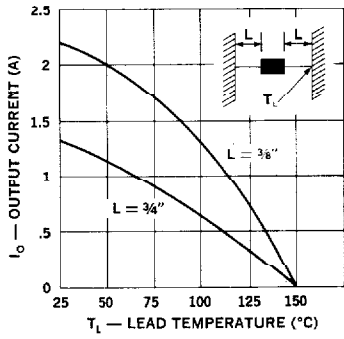
THESE DEVICES ALSO AVAILABLE IN SURFACE MOUNT PACKAGE. SEE SECTION 10

**ELECTRICAL SPECIFICATIONS**

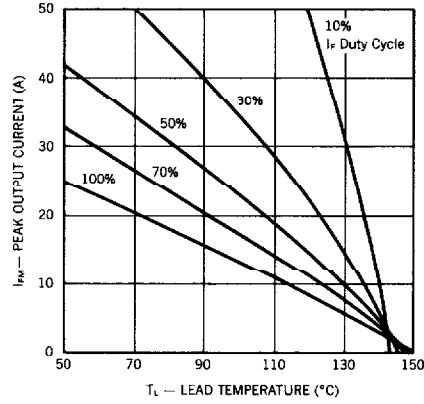
Type	PIV	Maximum Forward Voltage		Maximum Reverse Current		Maximum Reverse Recovery Time*
		T <sub>J</sub> = 25°C	T <sub>J</sub> = 100°C	@ PIV, T <sub>J</sub> = 25°C	T <sub>J</sub> = 100°C	
UES1104/1104HR	200V	1.25V @ 1A tp = 300μS	1.15V @ 1A tp = 300μS	10μA	200μA	50nS
UES1105/1105HR	300V					
UES1106/1106HR	400V					

\* Measured in circuit I<sub>F</sub> = 0.5A, I<sub>R</sub> = 1A, I<sub>REC</sub> = 0.25A

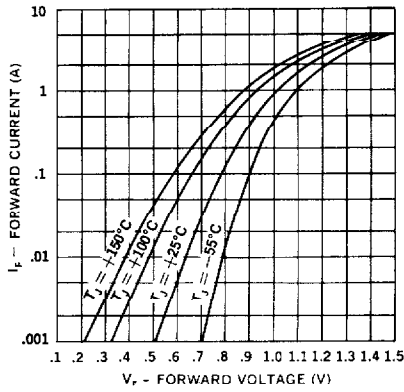
**Output Current vs. Lead Temperature**



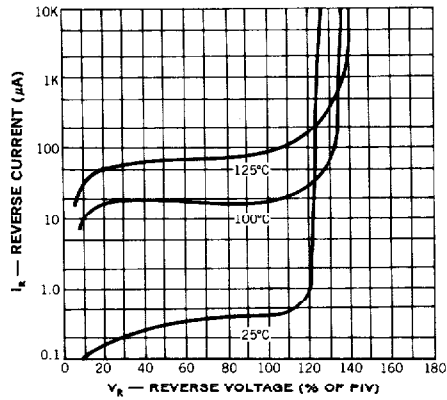
**Peak Output Current vs. Lead Temperature**



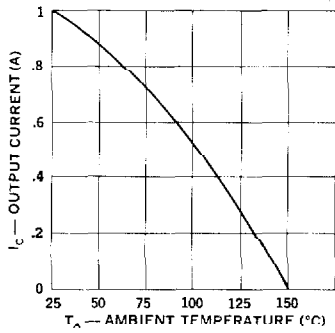
**Typical Forward Current vs. Forward Voltage**



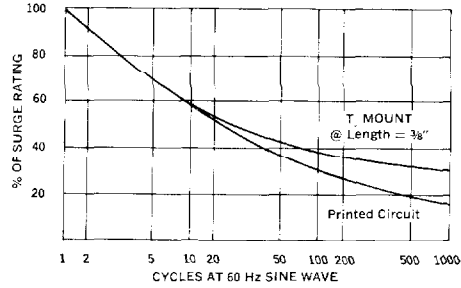
**Typical Reverse Current vs. Reverse Voltage**



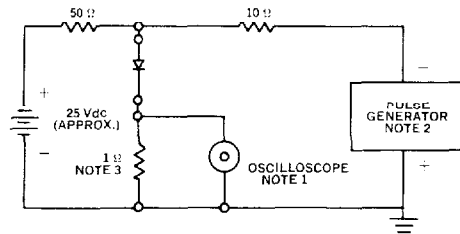
**Output Current vs. Ambient Temperature.**



**Multiple Surge Current vs. Duration**



**Reverse-Recovery Circuit**



- NOTES:**
1. Oscilloscope: Rise time  $\leq 3\text{ns}$ ; input impedance =  $50\Omega$ .
  2. Pulse Generator: Rise time  $\leq 8\text{ns}$ ; source impedance  $10\Omega$ .
  3. Current viewing resistor, non-inductive, coaxial recommended.

• OPTIONAL HIGH RELIABILITY (HR2) SCREENING (See 1N6620-1N6625)