

MVSTBR 2,5/ST

Plug-in direction vertical to the conductor axis,
connection point facing the **smooth** wall (R)
of the header

Pitch 5.0 or 5.08

(IEC)	rigid	flexible	I	U
[mm ²]	solid	stranded	AWG	[A]
Connection data	0.2-2.5	0.2-2.5	24-12	12
				250



Description	No. of positions	Dim. a [mm]	Type	Order No.	Pcs. Pkt.
Plugs, 5.0 mm pitch, color: green	2	5	MVSTBR 2,5/2-ST	17 92 01 6	50
	3	10	MVSTBR 2,5/3-ST	17 92 02 9	
	4	15	MVSTBR 2,5/4-ST	17 92 03 2	
	5	20	MVSTBR 2,5/5-ST	17 92 04 5	
	6	25	MVSTBR 2,5/6-ST	17 92 05 8	
	7	30	MVSTBR 2,5/7-ST	17 92 06 1	
	8	35	MVSTBR 2,5/8-ST	17 92 07 4	
	9	40	MVSTBR 2,5/9-ST	17 92 08 7	
	10	45	MVSTBR 2,5/10-ST	17 92 09 0	
	11	50	MVSTBR 2,5/11-ST	17 92 10 0	
	12	55	MVSTBR 2,5/12-ST	17 92 11 3	
	13	60	MVSTBR 2,5/13-ST	17 92 12 6	
	14	65	MVSTBR 2,5/14-ST	17 92 13 9	
	15	70	MVSTBR 2,5/15-ST	17 92 14 2	
	16	75	MVSTBR 2,5/16-ST	17 92 15 5	
	17	80	MVSTBR 2,5/17-ST	17 92 16 8	
	18	85	MVSTBR 2,5/18-ST	17 92 17 1	
	19	90	MVSTBR 2,5/19-ST	17 92 18 4	
	20	95	MVSTBR 2,5/20-ST	17 92 19 7	
	21	100	MVSTBR 2,5/21-ST	17 92 20 7	
	22	105	MVSTBR 2,5/22-ST	17 92 21 0	
	23	110	MVSTBR 2,5/23-ST	17 92 22 3	
	24	115	MVSTBR 2,5/24-ST	17 92 23 6	
	Plugs, 5.08 mm pitch, color: green	2	5.08	MVSTBR 2,5/2-ST-5,08	
3		10.16	MVSTBR 2,5/3-ST-5,08	17 92 25 2	
4		15.24	MVSTBR 2,5/4-ST-5,08	17 92 26 5	
5		20.32	MVSTBR 2,5/5-ST-5,08	17 92 27 8	
6		25.40	MVSTBR 2,5/6-ST-5,08	17 92 28 1	

查询"1792249"供应商	7	30.48	MVSTBR 2,5/7-ST-5,08	17 92 29 4
	8	35.56	MVSTBR 2,5/8-ST-5,08	17 92 30 4
	9	40.64	MVSTBR 2,5/9-ST-5,08	17 92 31 7
	10	45.72	MVSTBR 2,5/10-ST-5,08	17 92 32 0
	11	50.80	MVSTBR 2,5/11-ST-5,08	17 92 33 3
	12	55.88	MVSTBR 2,5/12-ST-5,08	17 92 34 6
	13	60.96	MVSTBR 2,5/13-ST-5,08	17 92 35 9
	14	66.04	MVSTBR 2,5/14-ST-5,08	17 92 36 2
	15	71.12	MVSTBR 2,5/15-ST-5,08	17 92 37 5
	16	76.20	MVSTBR 2,5/16-ST-5,08	17 92 38 8
	17	81.28	MVSTBR 2,5/17-ST-5,08	17 92 39 1
	18	86.36	MVSTBR 2,5/18-ST-5,08	17 92 40 1
	19	91.44	MVSTBR 2,5/19-ST-5,08	17 92 41 4
	20	96.52	MVSTBR 2,5/20-ST-5,08	17 92 42 7
	21	101.60	MVSTBR 2,5/21-ST-5,08	17 92 43 0
	22	106.68	MVSTBR 2,5/22-ST-5,08	17 92 44 3
	23	111.76	MVSTBR 2,5/23-ST-5,08	17 92 45 6
	24	116.84	MVSTBR 2,5/24-ST-5,08	17 92 46 9

Technical data

Dimensions

Pitch [mm] see description 5.0 / 5.08

Technical data in accordance with IEC / DIN VDE

Insulation material group	–		I	
Surge voltage category / contamination class	–/–	III / 3	III / 2	II / 2
Rated voltage	[V]	250	320	630
Rated surge voltage	[kV]	4	4	4
Nominal current / cross section	[A]/[mm ²]		12 / 2.5	
Maximum load current / cross section	[A]/[mm ²]		12 / 2.5	

Connection capacity

solid / stranded / conductor sizes	[mm ²]/[mm ²]/AWG	0.2 - 2.5 / 0.2 - 2.5 / 24 - 12
stranded with ferrules without / with plastic collar	[mm ²]	0.25 - 2.5 / 0.25 - 2.5

Multiple connection (2 conductors with same cross section)

solid / stranded	[mm ²]	0.2 - 1 / 0.2 - 1.5
stranded with ferrules without plastic collar	[mm ²]	0.25 - 1
stranded with TWIN ferrules with plastic collar	[mm ²]	0.5 - 1.5

Stripping length	[mm]	7
Internal cylindrical gage (IEC 947-1:1988)	–	A 3
Thread	–	M 3
Torque	[Nm]	0.5 - 0.6
Insulation material		PA
Inflammability class acc. to UL 94		V0
Temperature indices RTI/Ti		130/120

Temperature marked in mm

100/120

Approval data (UL and CSA) [查询"1792016"供应商](#)

Nominal voltage / current / conductor sizes

UL: [V] / [A] / AWG

300 / 10 / 30 - 12

CSA: [V] / [A] / AWG

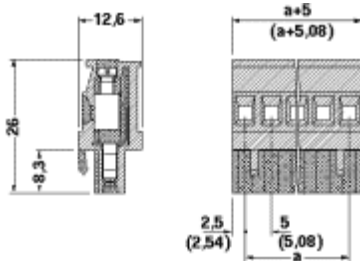
300 / 10 / 28 - 12

Articles printed in bold can be delivered at short notice.
 Products with black or gray housing available on request.

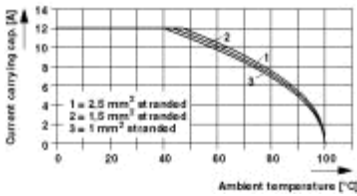
Note:

Only actuate COMBICON plug connectors when under no load condition. If for operating reasons small loads must be switched, experimental values are available upon request.

Dimensional drawing



Diagram



Current carrying capacity depending on ambient temperature

Plug : MVSTBR(W) 2,5/2-ST(F)(-5,08)

Header : MSTB(V)(A) 2,5/2-G(F)(-5,08)

