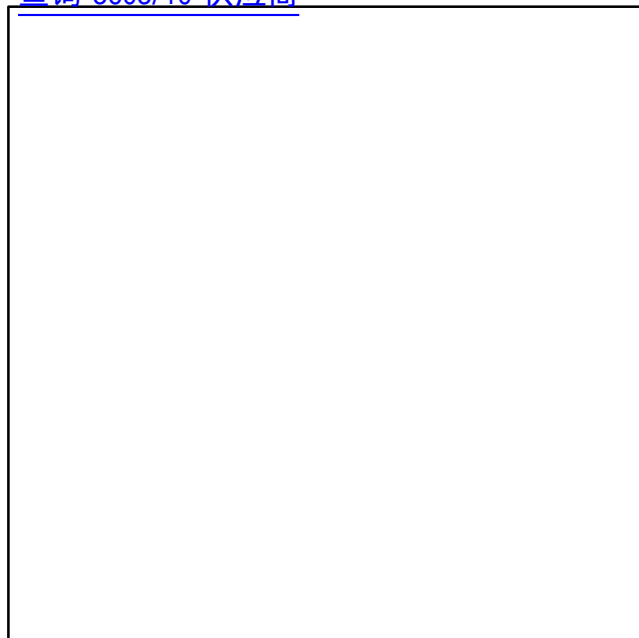


# .050" Jacketed, Flat Cable

28 AWG Stranded, PVC/PVC

3603 Series

[查询"3603/10"供应商](#)



- Meets external wiring requirements of National Electrical Code, Article 725 (CL2)
- UL listed for USA and Canadian markets
- 28 AWG stranded wire on .050 inch centers permits mass termination to broad line of IDC connectors
- PVC outer jacket prevents damage to cable
- Primary cable is zippable for branching or discrete terminations

Date Modified: April 24, 2001

TS-0060-15  
Sheet 1 of 2

90

## Physical

### Jacket


Material: Polyvinyl Chloride (PVC)

Color: Black

Primary Material: PVC

Color: Gray

### Marking

Standard: (UL) CL2 75C 28 AWG or AWM 20879 3M NU  AWM IIA/B 80C 300V FT1

EU <50V

Conductors: 28 AWG 7 × 36 [ 7 × 0.127 ] Tinned Stranded Copper

## Electrical

Voltage Rating:	USA: N.E.C. 725, CL2 or AWM 300V	Canada: 300V	EU: <50V
Insulation Resistance:	(Primary Cable) > 1 × 10 <sup>10</sup> Ω/10 ft. [ 3m ]		
	Unbalanced	Balanced	
Characteristic Impedance:	95 Ω	160 Ω	
Capacitance:	15.5 pF/ft (50.9 pF/m)	9.4 pF/ft (30.8 pF/m)	
Inductance:	.14 μH/ft (0.46 μH/m)	.24 μH/ft (0.79 μH/m)	
Propagation Delay:	1.47 ns/ft (4.82 ns/m)	1.50 ns/ft (4.92 ns/m)	
Velocity of Propagation:	69%	68%	

Note: Unbalanced is measured between ground-signal-ground conductors. Balanced is measured between signal conductors within a pair.

## Environmental

Temperature Rating: USA: CL2; 75°C or AWM; -20°C to +80°C Canada: 80°C

Flammability Rating: USA: N.E.C. 725, CL2 Canada: FT1

UL File No.: E118773, Power Limited Circuit Cable: CL2 (or AWM Style 20879)

### 3M Interconnect Solutions Division

6801 River Place Blvd.  
Austin, TX 78726-9000

For technical, sales or ordering information call  
**800-225-5373**

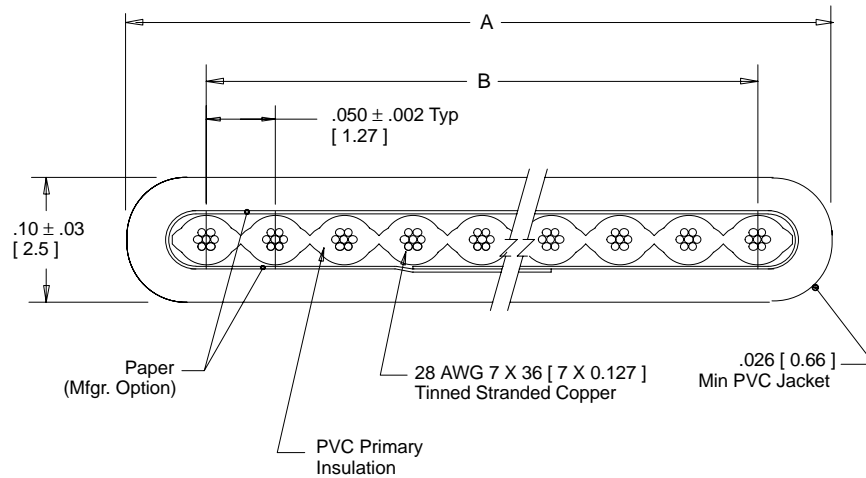
# .050" Jacketed, Flat Cable

## 28 AWG Stranded, PVC/PVC

3603 Series

[查询"3603/10"供应商](#)

Number of Conductors	3M Part Number	Dimension A ± .04	Dimension B
10	<b>3603/10</b>	.58 [ 14.70 ]	0.450 ± .007 [ 11.43 ]
16	<b>3603/16</b>	.88 [ 22.40 ]	0.750 ± .011 [ 19.05 ]
20	<b>3603/20</b>	1.08 [ 27.40 ]	0.950 ± .011 [ 24.13 ]
25	<b>3603/25</b>	1.33 [ 33.80 ]	1.200 ± .011 [ 30.48 ]
26	<b>3603/26</b>	1.38 [ 35.10 ]	1.250 ± .011 [ 31.75 ]
34	<b>3603/34</b>	1.78 [ 45.20 ]	1.650 ± .015 [ 41.91 ]
36	<b>3603/36</b>	1.88 [ 47.80 ]	1.750 ± .015 [ 44.45 ]
37	<b>3603/37</b>	1.93 [ 49.02 ]	1.800 ± .015 [ 45.72 ]
40	<b>3603/40</b>	2.08 [ 52.83 ]	1.950 ± .015 [ 49.53 ]
50	<b>3603/50</b>	2.58 [ 65.53 ]	2.450 ± .015 [ 62.23 ]
60	<b>3603/60</b>	3.08 [ 78.20 ]	2.950 ± .015 [ 74.93 ]
64	<b>3603/64</b>	3.28 [ 83.30 ]	3.150 ± .015 [ 80.01 ]



Inch  
[mm]

Tolerance Unless Noted			
	.0	.00	.000
Inch	±.1	±.05	±.010

[ ] Dimensions for Reference only

Note: Red marking on one edge of primary cable designates wire #1.

### Ordering Information

**3603/XX**

Number of Conductors  
(See Table)

Note: Standard length is 100 ft/roll.

TS-0060-15  
Sheet 2 of 2

### 3M Interconnect Solutions Division

6801 River Place Blvd.  
Austin, TX 78726-9000

For technical, sales or ordering information call  
**800-225-5373**