

Series 801 "Mighty Mouse"
Double-Start ACME Thread



Series 801 Hermetic Receptacles



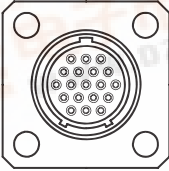
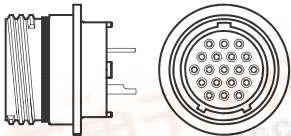
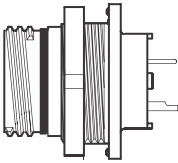
Series 801 Hermetic Receptacles feature 304L stainless steel shells, fused vitreous glass insulators and Alloy 52 iron alloy contacts.

1 X 10⁻⁶ cc/second maximum Helium leak rate.

Three Shell Styles: solder mount, jam nut or square flange.

Solder Cup Contacts or PC Tail Contacts for attachment to flexible or rigid circuits or rigid boards.

Series 801 Solder Mount Hermetic

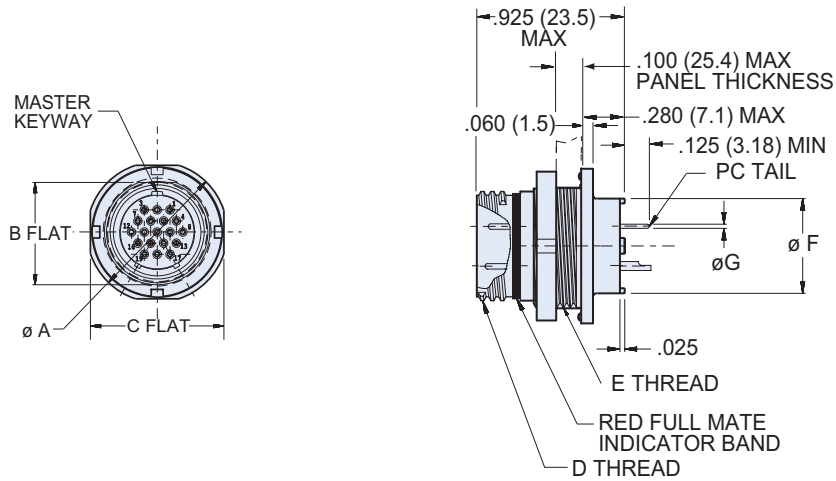
| HOW TO ORDER | | | | | | |
|--|--|--|---|---|--|--------------------|
| Sample Part Number | | | | | | |
| 801-012 | -03 | Z1 | 7-10 | P | A | |
| Series | Shell Style | Shell Material / Finish | Shell Size/Insert Arrangement | | Contact Type | Shell Key Position |
| 801-012 Double-Start Hermetic Receptacles with Printed Circuit Board Contacts or Solder Cup Contacts |  <p>-02 Square Flange</p>  <p>-03 Solder Mount</p>  <p>-07 Jam Nut</p> | Z1 Stainless Steel / Passivated ZB Stainless Steel with Olive Drab Cadmium Finish | 5-3 3 #23 6-1 1 #16 6-4 4 #23 6-7 7 #23 7-1 1 #12 7-10 10 #23 8-13 13 #23 9-4 4 #16 9-19 19 #23 10-26 26 #23 13-2 2 #12 13-37 37 #23 16-55 55 #23 17-85 85 #23 | P Pin, Solder Cup C Pin, PC Tail | A Normal B Pos. B C Pos. C D Pos. C | |





Series 801 "Mighty Mouse"
Double-Start ACME Thread

Series 801 Hermetic Jam Nut Receptacles



DIMENSIONS

| Shell Size | Ø A | | B Flat | | C Flat | | D Thread | E Thread UN-2A | Ø F | | Ø G Tail Dia. |
|------------|-------|-------|--------|-------|--------|-------|-------------------|----------------|------|-------|--------------------------|
| | In. | mm. | In. | mm. | In. | mm. | | | In. | mm. | |
| 5 | .575 | 14.61 | .350 | 8.89 | .545 | 13.84 | .3125-.05P-.1L-2A | .375-28 | .244 | 6.20 | #23 |
| 6 | .635 | 16.13 | .410 | 10.41 | .595 | 15.11 | .375-.05P-.1L-2A | .4375-28 | .330 | 8.38 | .018/.022 (0.46/0.56) |
| 7 | .755 | 19.18 | .536 | 13.61 | .723 | 18.36 | .4375-.05P-1L2A | .5625-32 | .432 | 10.97 | #16 |
| 8 | .755 | 19.18 | .536 | 13.61 | .723 | 18.36 | .5000-.05P-1L-2A | .5625-32 | .493 | 12.52 | #16 |
| 9 | .830 | 21.08 | .596 | 15.14 | .790 | 20.07 | .5625-.05P-.1L-2A | .625-28 | .551 | 14.00 | .060/.064 (1.52/1.63) |
| 10 | .890 | 22.61 | .658 | 16.71 | .855 | 21.72 | .6250-.05P-1L-2A | .6875-28 | .620 | 15.75 | #16 |
| 13 | 1.078 | 27.38 | .845 | 21.46 | 1.044 | 26.52 | .8125-.1P-.2L-2a | .875-28 | .703 | 17.86 | #12 |
| 16 | 1.264 | 32.11 | 1.022 | 25.96 | 1.230 | 31.24 | 1.000-.1P-.2L-2A | 1.0625-20 | .863 | 21.92 | .092/.096 (2.34/2.44) |
| 17 | 1.325 | 33.66 | 1.096 | 27.84 | 1.290 | 32.77 | 1.062-.1P-.2L-2A | 1.125-28 | .912 | 23.16 | #12 |

PANEL CUTOUT

| Shell Size | A Flat | | Ø B | |
|------------|---------------|---------------|-------|-------|
| | In. ± .002 | mm. ± 0.05 | In. | mm. |
| 5 | .360 | 9.14 | .385 | 9.78 |
| 6 | .420 | 10.67 | .448 | 11.37 |
| 7 | .551 | 14.00 | .573 | 14.55 |
| 8 | .551 | 14.00 | .573 | 14.55 |
| 9 | .609 | 15.47 | .635 | 16.13 |
| 10 | .671 | 17.04 | .698 | 17.73 |
| 13 | .859 | 21.82 | .885 | 22.48 |
| 16 | 1.038 | 26.37 | 1.075 | 27.31 |
| 17 | 1.111 | 28.22 | 1.135 | 28.83 |

KEY POSITIONS

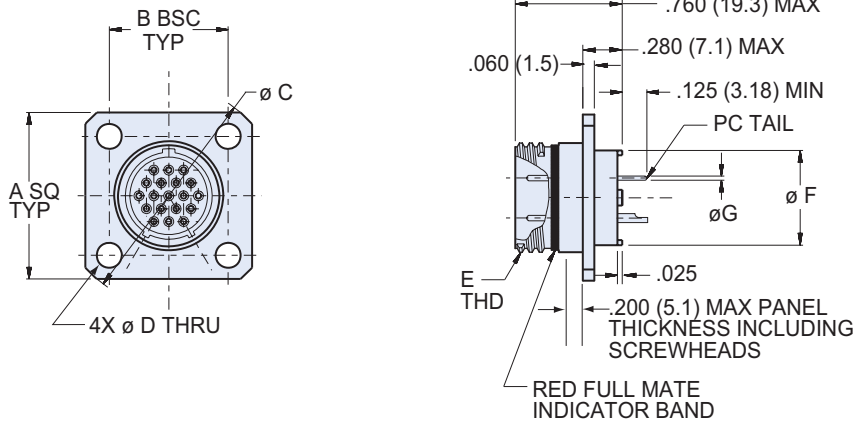
Receptacle Key Positions

| | A° | B° |
|---|------|------|
| A | 150° | 210° |
| B | 75° | 210° |
| C | 95° | 230° |
| D | 140° | 275° |



**Series 801 "Mighty Mouse"
Double-Start ACME Thread**

Series 801 Hermetic Square Flange Receptacles



| DIMENSIONS | | | | | | | | | | | | |
|------------|-------|-------|-------|-------|-------|-------|-----------|------------|-------------------|------|-------|--------------------------|
| Shell Size | A Max | | B BSC | | Ø C | | Ø D | | E Thread | Ø F | | Ø G Tail Dia |
| | In. | mm. | In. | mm. | In. | mm. | In. ±.003 | mm. ± 0.08 | | In. | mm. | |
| 5 | .530 | 13.46 | .363 | 9.22 | .680 | 17.27 | .093 | 2.36 | .3125-.05P-.1L-2A | .244 | 6.20 | #23 |
| 6 | .590 | 14.99 | .423 | 10.74 | .750 | 19.05 | .093 | 2.36 | .375-.05P-1L-2A | .330 | 8.38 | .018/.022 (0.46/0.56) |
| 7 | .650 | 16.51 | .483 | 12.27 | .850 | 21.59 | .093 | 2.36 | .4375-.05P-1L2A | .432 | 10.97 | |
| 8 | .712 | 18.08 | .545 | 13.84 | .938 | 23.83 | .093 | 2.36 | .5000-.05P-1L2A | .493 | 12.52 | #16 |
| 9 | .850 | 21.59 | .607 | 15.42 | 1.125 | 28.58 | .128 | 3.25 | .5625-.05P-.1L-2A | .551 | 14.00 | .060/.064 (1.52/1.63) |
| 10 | .890 | 22.61 | .670 | 17.02 | 1.188 | 30.18 | .128 | 3.25 | .6250-.05P-1L2A | .620 | 15.75 | |
| 13 | 1.030 | 26.16 | .812 | 20.62 | 1.375 | 34.93 | .128 | 3.25 | .8125-.1P-.2L-2A | .703 | 17.86 | #12 |
| 16 | 1.219 | 31.96 | .981 | 24.92 | 1.625 | 41.28 | .128 | 3.25 | 1.000-.1P-.2L-2A | .863 | 21.92 | .092/.096 (2.34/2.44) |
| 17 | 1.280 | 32.51 | 1.060 | 26.92 | 1.700 | 43.18 | .128 | 3.25 | 1.062-.1P-.2L-2A | .912 | 23.16 | |

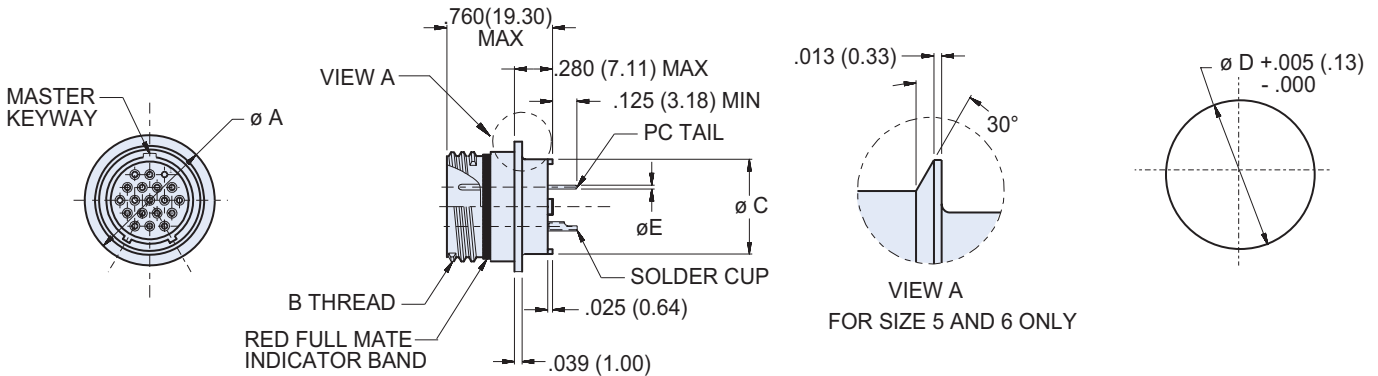
| PANEL CUTOUT | | | | | | | |
|--------------|-------|-------|-------|-------|------|------|--|
| Shell Size | Ø A | | Ø B | | Ø C | | |
| | In. | mm. | In. | mm. | In. | mm. | |
| 5 | .330 | 8.38 | .363 | 9.22 | .093 | 2.36 | |
| 6 | .390 | 9.91 | .423 | 10.74 | .093 | 2.36 | |
| 7 | .450 | 11.43 | .483 | 12.27 | .093 | 2.36 | |
| 8 | .510 | 12.95 | .545 | 13.84 | .093 | 2.36 | |
| 9 | .575 | 14.61 | .607 | 15.42 | .128 | 3.25 | |
| 10 | .640 | 16.26 | .670 | 17.02 | .128 | 3.25 | |
| 13 | .825 | 20.96 | .812 | 20.65 | .128 | 3.25 | |
| 16 | 1.015 | 25.78 | .981 | 24.92 | .128 | 3.25 | |
| 17 | 1.075 | 27.31 | 1.060 | 26.92 | .128 | 3.25 | |

| KEY POSITIONS | | |
|--------------------------|------|------|
| Receptacle Key Positions | | |
| | A° | B° |
| A | 150° | 210° |
| B | 75° | 210° |
| C | 95° | 230° |
| D | 140° | 275° |



**Series 801 "Mighty Mouse"
Double-Start ACME Thread**

Series 801 Hermetic Solder Mount Receptacle

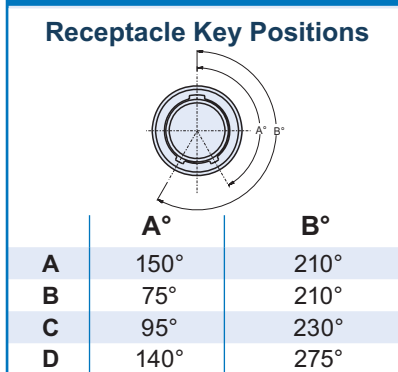


Solder Mount Hermetic
801-012-03

DIMENSIONS

| Shell Size | Ø A | | B Thread | Ø C | | Ø D Panel Cutout | | Ø L Tail Dia. |
|------------|-------|-------|-------------------|------|-------|------------------|-------|--------------------------|
| | In. | mm. | | In. | mm. | In. | mm. | |
| 5 | .395 | 10.03 | .3125-.05P-.1L-2A | .244 | 6.20 | .319 | 8.10 | #23 |
| 6 | .455 | 11.56 | .375-.05P-.1L-2A | .330 | 8.38 | .376 | 9.55 | .018/.022 (0.46/0.56) |
| 7 | .520 | 13.21 | .4375-.05P-.1L-2A | .432 | 11.97 | .438 | 11.13 | |
| 8 | .580 | 14.73 | .5000-.05P-.1L-2A | .493 | 12.52 | .438 | 11.13 | #16 |
| 9 | .645 | 16.38 | .5625-.05P-.1L-2A | .551 | 14.00 | .563 | 14.30 | .060/.064 |
| 10 | .705 | 18.01 | .6250-.05P-.1L-2A | .620 | 15.75 | .438 | 11.13 | (1.52/1.63) |
| 13 | .895 | 22.73 | .8125-.1P-.2L-2A | .703 | 17.86 | .814 | 20.68 | |
| 16 | 1.080 | 27.43 | 1.000-.1P-.2L-2A | .863 | 21.92 | 1.007 | 25.58 | #12 |
| 17 | 1.145 | 29.08 | 1.062-.1P-.2L-2A | .912 | 23.16 | 1.067 | 27.10 | .092/.096 (2.34/2.44) |

KEY POSITIONS



This datasheet has been downloaded from:

www.EEworld.com.cn

Free Download

Daily Updated Database

100% Free Datasheet Search Site

100% Free IC Replacement Search Site

Convenient Electronic Dictionary

Fast Search System

www.EEworld.com.cn