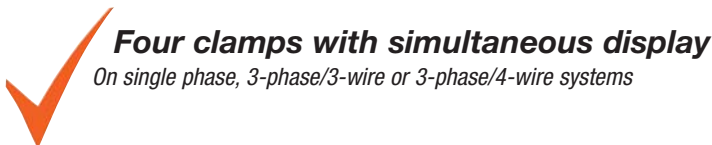


1000A 3-Phase Power Analyzer/Datalogger

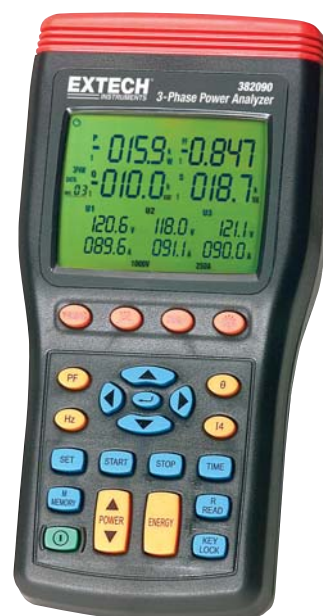


Four clamps with simultaneous display

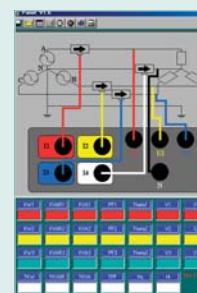
On single phase, 3-phase/3-wire or 3-phase/4-wire systems

Features:

- Large backlighting LCD displays 10 parameters simultaneously (kW, kVAR, kVA, PF plus the voltage and current of the 3 phases)
- Up to four current probes can be connected to the analyzer
- Clamp-on True RMS power measurements with software for Harmonics analysis
- Displays Active Power (kW), Apparent Power (kVA), Reactive Power (kVAR) and Power Factor
- Current measurements to 1000A and Voltage measurements to 600V
- kWh, kVARh and kVAh energy measurements
- Automatically logs up to 20,000 sets of measurements and manually logs up to 99 sets
- Programmable Start/Stop datalogging times
- PC interface with Windows® 95/98/NT/2000/ME/XP compatible software for single and three phase voltage/current Waveform display and Harmonic analysis
- Phase sequence measurements
- Auto power off with disable feature
- CAT III-1000V, UL Listed; CE approved; 1yr warranty



Complete with 4 current clamps, 4 voltage leads with alligator clips, 8 AA batteries, AC adaptor, software, PC interface cable, and case



Software included to download, store data, and display on a PC



Software included for Harmonics Analysis

Applications:

- AC Power Quality Evaluation
- Harmonic Analysis
- Motor/Generator Installation
- Energy Audits

Ordering Information:

382090.....1000A 3-Phase Power Analyzer/Datalogger (60Hz)
382091.....1000A 3-Phase Power Analyzer/Datalogger (50Hz)
382099.....Voltage Test Leads with Alligator Clips (4 leads)
USB100RS-232 to USB Adaptor

Specifications	Range	Basic Accuracy
ACV (True rms)	999.9V	±(0.5%rdg+10d)
ACA	1000A	±(2%rdg+20d)
Active Power (kW)	999.9kW	±(1.5%rdg+20d)
Apparent Power (kVA)	999.9kVA	±(1.5%rdg+20d)
Reactive Power (kVAR)	999.9kVAR	±(1.5%rdg+20d)
Power Factor	-1.000 to +1.000	±(3%rdg+30d)
Frequency	60Hz to 100Hz	±(0.5%rdg+1d)
Phase	+90.0°~ 11°~ -90.0°	±(3°+30d)
Active Power Energy (kWh)	0.0kWh to 119.3MWh	±(1.5%rdg+20d)
Apparent Power Energy (kVAh)	0.0kVAh to 119.3MVAh	±(1.5%rdg+20d)
Reactive Power Energy (kVARh)	0.0kVARh to 119.3MVARh	±(1.5%rdg+20d)
Harmonics	1 to 31 (with the software)	±(1.5%rdg+20d)
Datalogging	20,000 reading	
Dimensions	9.25 x 4.5 x 2.1" (235 x 116 x 54mm)	
Weight	Meter: 25.8oz (730g); Clamp: 11.8oz (333g)	