

[查询"3142W103P"供应商](#)

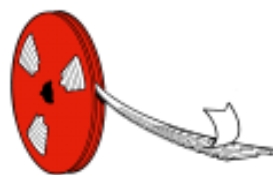
SMD Trimmers

type 3142 series

A range of small single turn trimmers suited to reflow soldering and attractively priced for volume application. The 3142 is supplied on 12mm tape on 178mm diameter reels. This product is long established, having an excellent reputation for long term stability. It is readily available from our network of distributors.

Key features

- stable cermet element
- 0.15W power rating
- packed in standard 12mm tape
- attractively priced
- suited to automatic placement
- range of terminal layouts
- temperature range -25°C to +85°C
- excellent vacuum pick up on head



Specification

Electrical

Resistance Range:	100R to 1M (1, 2, 5 in each decade)
Resistance Tolerance:	± 25%
Temperature Coefficient:	± 250ppm/°C at -20°C to +80°C
Operating Voltage:	50V DC or AC RMS; maximum
Contact Resistance Variation:	5% of nominal maximum
Power Rating:	0.15 watts at 70°C
Effective Electrical Angle:	270° ± 20°

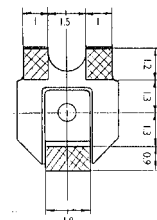
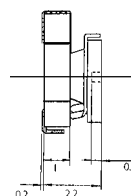
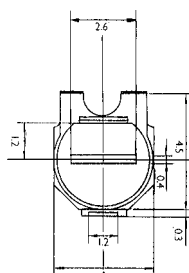
Mechanical

Rotational Torque:	2 - 25mNm
Mechanical Adjustment:	Continuous

Environmental

Temperature Range:	- 25°C to + 85°C
Rotational Life:	After 20 cycles ΔR < 5%
Load Life:	ΔR < 5% after 500 hours
Soldering Heat:	250°C 10 seconds, 260°C 5 seconds

Dimensions



Packaging:
800 Pieces (7" Reel)

How To Order

3142	X	102	P
Common Part	Orientation	Resistance Value	Tolerance
3142 - 4mm Single Turn Trimmer (Delta Terminals)	X - Terminals 1 & 3 away from terminal holes	The first two digits are significant figures of resistance value and the third one denotes the number of zeros following Example 1K : 102 10K : 103 100K : 104	P - ± 25%

Please Request Full Data
Sheet F0714

sales action desk (01793) 611666
sales fax line (01793) 611777