

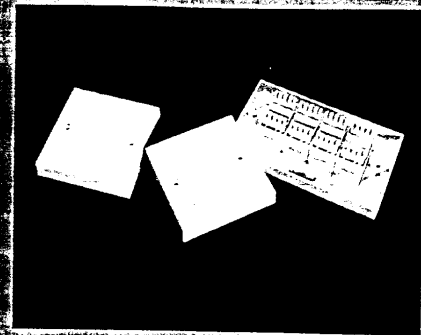
Enhanced Net 5 UTP Faceplates

Compliant with Gigabit Ethernet environments, the level and integrity of transmission is very specific- applicable only to a network made up exclusively of Enhanced components.

Features:

- Manufactured and assembled in the U.K with Enhanced Stewart RJ45 sockets & standard industry IDCs for accurate terminations
- Quality tested with extended PowerSum performance characteristics - conforms to proposed TIA/EIA-568-A Enhanced Cat.5 specification (SP 4195-A)

STOCK NO.	DESCRIPTION
4295	Enhanced Cat.5 UTP Single Faceplate
4296	Enhanced Cat.5 UTP Dual Faceplate
4297	Enhanced Cat.5 UTP Quad Faceplate



4295/4296/4297

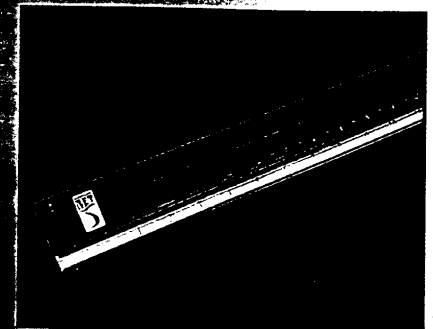
Enhanced Net 5 UTP Patch Panels

The Enhanced PCB Cat.5 patch panels are appropriate for high speed networks requirements including Giga Ethernet. They are ideally suited to advanced networks and will operate in excess of the proposed Enhanced Cat.5 specification.

Features:

- Manufactured in the UK using high quality component sockets and IDCs
- Extended Powersum performance characteristics and specification that exceeds proposed TIA/EIA-568-A Enhanced Cat.5 specifications
- Individually QA tested with hook and loop retainers for cable management

STOCK NO.	DESCRIPTION
5267	1u 16 x Enhanced RJ45 Patch Panel
5259	1u 24 x Enhanced RJ45 Patch Panel
5268	2u 32 x Enhanced RJ45 Patch Panel
5269	3u 48 x Enhanced RJ45 Patch Panel



5267

Cat.6 UTP System

The development of Cat.6 is slowly taking shape. Data transmission at very high speeds with bandwidths of 200 MHz will develop and eventually become the norm. Fast Ethernet systems will move on to Cat.6 - taking in Gigabit Ethernet and then leap-frogging into the future. However, at present, due to the lack of clear ratification of standards, we are merely listing a number of component parts that have been tested by individual manufacturers who are satisfied they will be compliant with proposed Cat.6 specifications.

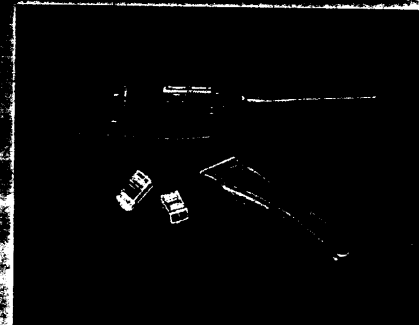
Features:

- Cat.6 UTP RJ45 plug and high quality crimp tool manufactured by Stewart
- Building (premise) solid core Cat.6 cable made in the UK by Draka - supplied in boxed 305m reels
- Cat.6 UTP patch panels and faceplates are manufactured by Net6
- Call our sales desk for further technical details

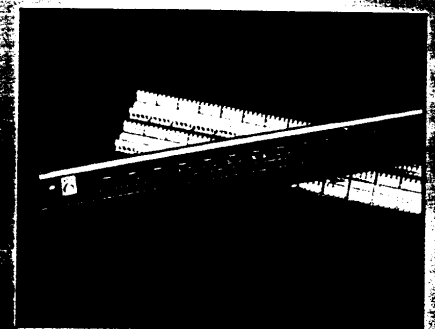
STOCK NO.	DESCRIPTION
<i>Cat.6 Plugs, Cable & Crimp Tool</i>	
6390	Cat.6 UTP RJ45 Plugs - solid (pk of 50)
6390-10	Cat.6 UTP RJ45 Plugs - solid (pk of 10)
6955	Professional Cat.6 UTP RJ45 Crimp Tool
9065	4 Pair UTP Cable - Solid Core Cat.6 (305m)

<i>Patch Panels</i>	
6229	1u 16 x Cat.6 RJ45 Patch Panel
6230	2u 32 x Cat.6 RJ45 Patch Panel
6231	2u 48 x Cat.6 RJ45 Patch Panel

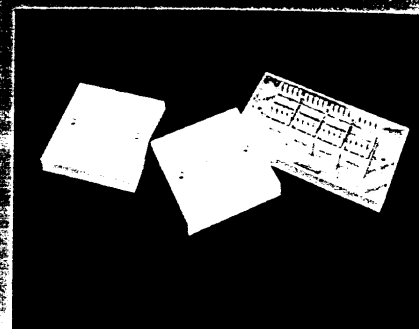
<i>Faceplates</i>	
6226	Cat.6 UTP Single Faceplate
6227	Cat.6 UTP Dual Faceplate
6228	Cat.6 UTP Quad Faceplate



6390/6955



6229/6230



6226/6227/6228