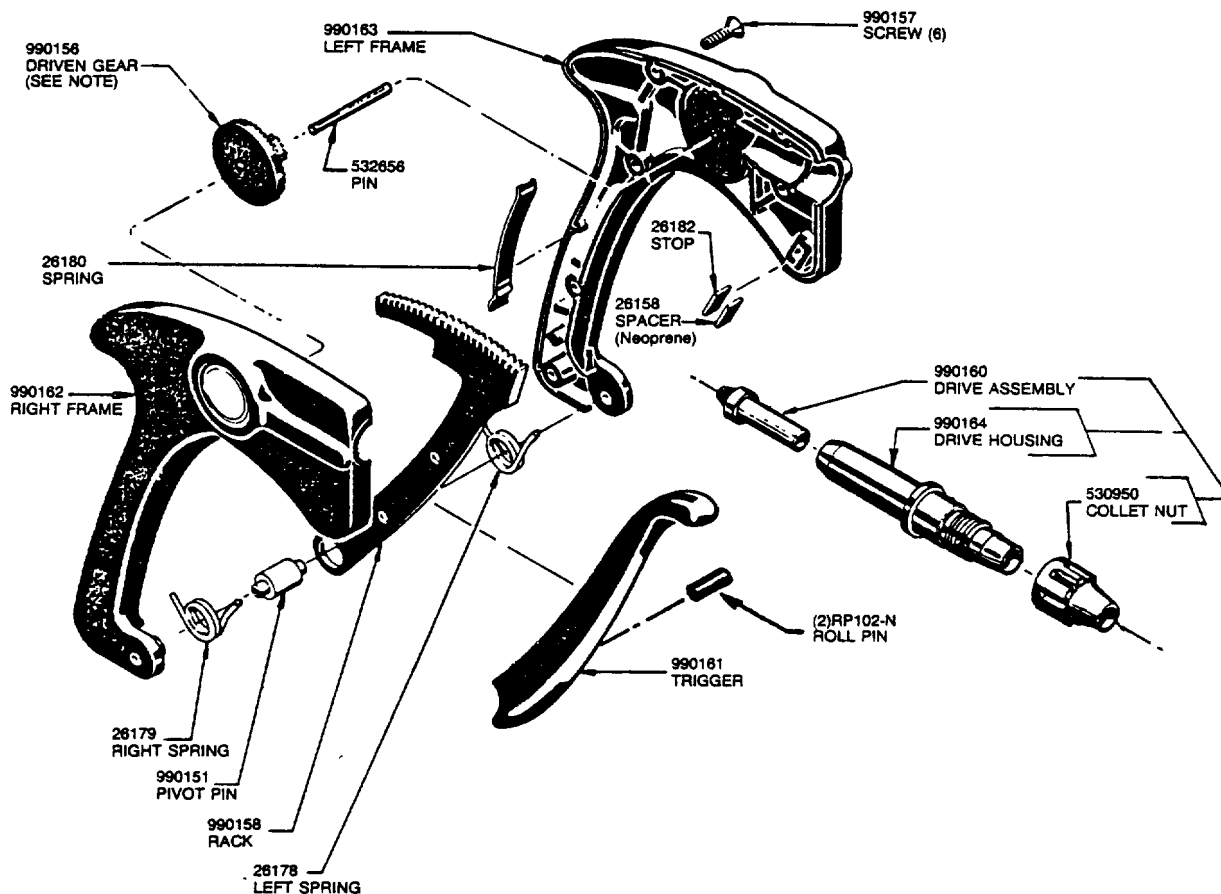


**PARTS LIST**  
**HAND SQUEEZE WIRE-WRAP® TOOL**  
**14 HP-2 (MODEL 28000AC1 & 28010AB2)**

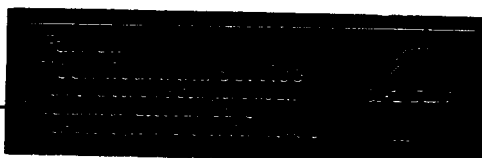


**NOTE:**  
 FOR LEFT HAND ROTATION  
 REVERSE 990158 DRIVEN  
 GEAR.

**NOTE:** FRAMES ARE A POLYCARBONATE PLASTIC  
 DO NOT USE SOLVENTS OR OILS WHICH ARE  
 NOT COMPATIBLE WITH POLYCARBONATE.  
 CLEAN WITH WHITE KEROSENE.

**HOW TO ORDER  
 REPLACEMENT PARTS**

**SPECIFY:**  
 1. QUANTITY  
 2. PART NUMBER  
 3. PART NAME



# 14HP-2 MANUALLY OPERATED WIRE-WRAP® TOOL

Models: 28000AB1 (RH) & 28010AB2 (LH ROTATION)

PARTS LIST PL 14-250  
6th Edition

## INSTALLATION

Proper installation of wrapping bit in tool is important. The following procedure should be utilized.

1. Place wrapping bit into hole in collet at front of tool, turn bit until it engages to tool drive shaft.
2. Place sleeve over bit and into collet bore and rotate sleeve until sleeve slot engages with collet pin, seat sleeve against bit tang face.
3. Activate tool and tighten collet finger tight while tool is rotating.

This procedure prevents drag or friction between rear of sleeve and tang face of bit and extends life of tool, bit and sleeve.

## LUBRICATION

Lubricate pivot pin with light machine oil. Grease pinion gear, bevel and spur gear, and gear rack.

## DISASSEMBLY

1. Loosen the collet nut and remove the stationary sleeve and wrapping bit.
2. Remove the six screws securing the left frame to the right frame.
3. Remove the drive assembly, trigger and gear rack assembly, 26178 and 26179 springs.
4. Remove the driven gear and 26180 spring.
5. Remove the drive assembly.

## REASSEMBLY

1. Position the 26180 spring as shown in Figure 1.
2. Insert the driven gear, 990156, with the teeth facing upwards onto the pin 532656 for the right hand tool. For the left hand tool, position the gear teeth facing down. Position index mark as shown in Figure 1.
3. Insert the 26179 spring into the slot of the trigger and assemble over the pivot pin (See Figure 1).
4. Squeeze the trigger until the gears mesh and insert the 26182 stop and 26158 neoprene spacer. Be sure index mark on driven gear is positioned as shown.
5. Using T-79013, radially locate the drive assembly to the wire loading position required and place in the right frame.
6. Position the 26178 spring over the pivot pin with the end inserted in the trigger slot.
7. Place the left frame over the pivot pin with the end of the spring over the round lug. Move the left frame into position with the right frame and secure in place. Before tightening the screws, check radial position of the locating pin so the drive housing will align properly with the right frame. Check the trigger springs to make sure they are not "pinched" between the pivot pin and frames.

## ADJUSTMENT

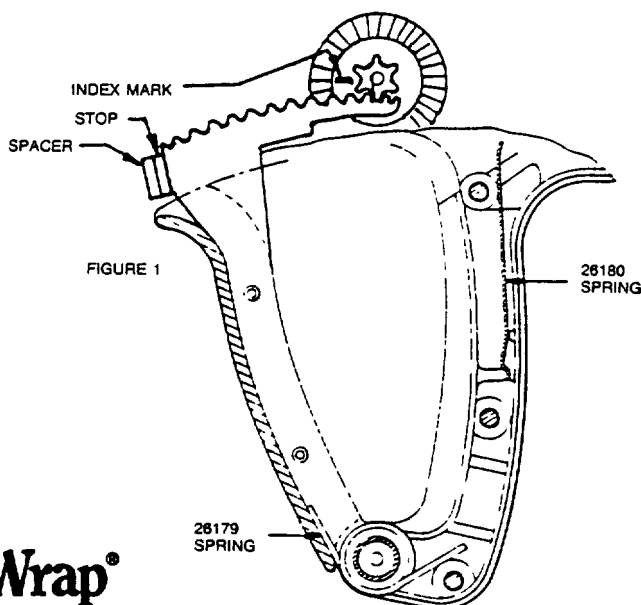
1. Rotate pivot pin by inserted 7/64 Allen wrench into the end of the pivot pin.
2. Rotate clockwise until gear rack runs rough or jams. Back off until gear rack begins to work freely.

## TOOLING REQUIRED FOR REPAIR

T-79013 - Index position fixture.

## FOR REPAIR SEND TO:

Weller/Wire-Wrap Plant  
Attn: Wire-Wrap Repair Dept.  
P.O. Box 868  
State Road  
Cheraw, SC 29520



**Wire-Wrap®**

Cooper Tools  
PO Box 728 Apex NC, 27502