



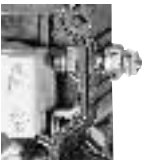


## Selection chart

Illustrations	Description	Order no.
	<b>Fixing nut</b> M 30 to fix the actuating elements in the mounting wall of enclosure	05-1138-0009
	<b>Printed pushbutton labels</b> 6 loose pushbutton labels 1 x green marked START, ON, I 1 x red marked STOP, OFF, O	05-0091-0019
	<b>Spanner</b>	05-1191-0001
	<b>Label holder</b> Label holder for actuating elements with label insert	05-0044-0001
	<b>Contrast label</b> for Emergency Stop NOT-AUS yellow Ø 90 mm	03-5412-0057
	<b>Label</b> unmarked, for device information	03-3600-0021
	<b>Marking tag</b> for an additional label, for all actuating elements	05-1105-0020
	<b>Label</b> for tag for your notes	03-5412-0060

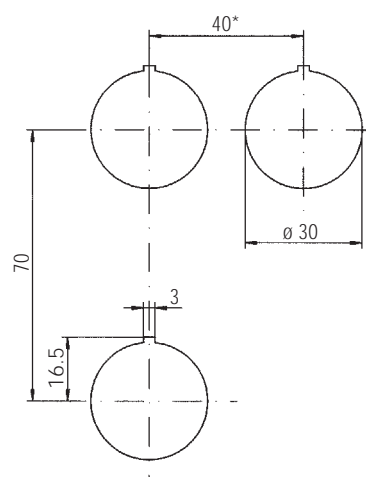


## Selection chart

Illustrations	Description	➔ Order no.
	<b>ComEx flange set</b> for the connection of two ComEx enclosures includes 1 threaded sleeve, 1 lock nut and 1 O-ring	<b>05-0091-0046</b>
	<b>Locking device</b> (without padlock) for ComEx enclosure NIRO frame, transparent hood of high-quality thermoplast	<b>05-0037-0007</b>
	<b>Locking device</b> (without padlock) for control boxes NIRO frame, transparent hood of high-quality thermoplast	<b>05-0037-0006</b>
	<b>Protective metal shroud</b> for emergency stop actuating element to prevent accidental switching	<b>05-0032-0009</b>
	<b>External Earth Stud</b> for outside-connection	<b>05-0012-0124</b>

## Mounting dimensions

for switching and light elements according to EN 60947-5-1



\* recommended distance for mushroom  
pushbutton and emergency switch 100 mm