



### FEATURES

- RoHS compliant
- Up to 4.6A I<sub>DC</sub>
- 3.3μH to 680μH
- Optional integral EMI shield
- Low R<sub>DC</sub>
- Surface mount
- Compact size
- Tape and reel packaging
- J-STD-020C reflow
- Backward compatible with Sn/Pb soldering systems

### DESCRIPTION

The 2600 series is a range of bobbin-wound, surface-mount inductors designed for use in switching power supply, and power line filter circuits. The parts are suitable for any application requiring a high saturation current in a miniature surface-mount footprint. Where EMI is a critical factor, the devices are available with an integral ferrite EMI shield.

### SELECTION GUIDE (UNSHIELDED TYPES)

| Order Code | Inductance      | Inductance Range | DC                   | DC         | SRF        |
|------------|-----------------|------------------|----------------------|------------|------------|
|            | (1kHz, 100mVAc) | (1kHz, 100mVAc)  | Current <sup>1</sup> | Resistance | (100mVrms) |
|            | Nom.            | Min. - Max.      | Max.                 | Max.       | Nom.       |
|            | μH              | μH               | A                    | mΩ         | MHz        |
| 263R3C     | 3.3             | 2.13-3.95        | 4.40                 | 35         | 53.0       |
| 264R7C     | 4.7             | 3.41-6.34        | 3.60                 | 45         | 37.0       |
| 266R8C     | 6.8             | 5.00-9.28        | 3.10                 | 54         | 31.0       |
| 26100C     | 10              | 8.00-12.0        | 2.60                 | 60         | 24.8       |
| 26120C     | 12              | 7.95-14.8        | 2.42                 | 68         | 24.0       |
| 26150C     | 15              | 12.0-18.0        | 2.27                 | 90         | 20.2       |
| 26180C     | 18              | 12.9-24.0        | 2.10                 | 87         | 19.0       |
| 26220C     | 22              | 17.6-26.4        | 1.95                 | 100        | 16.9       |
| 26330C     | 33              | 26.4-39.6        | 1.50                 | 120        | 12.8       |
| 26470C     | 47              | 42.3-51.7        | 1.28                 | 170        | 10.2       |
| 26680C     | 68              | 61.2-74.8        | 1.11                 | 220        | 8.37       |
| 26101C     | 100             | 90.0-110         | 0.97                 | 350        | 6.56       |
| 26151C     | 150             | 135-165          | 0.78                 | 470        | 5.20       |
| 26221C     | 220             | 198-242          | 0.66                 | 730        | 4.00       |
| 26331C     | 330             | 297-363          | 0.52                 | 1150       | 3.14       |
| 26471C     | 470             | 423-517          | 0.42                 | 1480       | 2.54       |
| 26681C     | 680             | 612-748          | 0.28                 | 2250       | 1.97       |

### SELECTION GUIDE (SHIELDED TYPES)

| Order Code | Inductance      | Inductance Range | DC                   | DC         | SRF        |
|------------|-----------------|------------------|----------------------|------------|------------|
|            | (1kHz, 100mVAc) | (1kHz, 100mVAc)  | Current <sup>1</sup> | Resistance | (100mVrms) |
|            | Nom.            | Min. - Max.      | Max.                 | Max.       | Nom.       |
|            | μH              | μH               | A                    | mΩ         | MHz        |
| 26S3R3C    | 3.3             | 2.69-5.46        | 4.60                 | 33         | 46.0       |
| 26S4R7C    | 4.7             | 3.58-7.15        | 3.80                 | 38         | 38.0       |
| 26S6R8C    | 6.8             | 4.60-8.97        | 3.21                 | 43         | 30.0       |
| 26S100C    | 10              | 8.00-12.0        | 2.65                 | 50         | 22.9       |
| 26S120C    | 12              | 8.42-15.9        | 2.55                 | 58         | 21.0       |
| 26S150C    | 15              | 12.0-18.0        | 2.45                 | 60         | 19.7       |
| 26S180C    | 18              | 13.4-25.6        | 2.32                 | 74         | 16.0       |
| 26S220C    | 22              | 18.7-26.4        | 2.20                 | 70         | 15.5       |
| 26S330C    | 33              | 28.1-39.6        | 1.80                 | 100        | 11.5       |
| 26S470C    | 47              | 40.0-56.4        | 1.50                 | 120        | 9.44       |
| 26S680C    | 68              | 57.8-81.6        | 1.26                 | 170        | 7.47       |
| 26S101C    | 100             | 85.0-120         | 1.05                 | 250        | 6.04       |
| 26S151C    | 150             | 128-180          | 0.85                 | 400        | 4.67       |
| 26S221C    | 220             | 187-264          | 0.70                 | 520        | 3.75       |
| 26S331C    | 330             | 281-396          | 0.57                 | 800        | 2.87       |
| 26S471C    | 470             | 400-564          | 0.48                 | 1200       | 2.33       |
| 26S681C    | 680             | 578-816          | 0.40                 | 1780       | 1.83       |

### ABSOLUTE MAXIMUM RATINGS

|                                      |                |
|--------------------------------------|----------------|
| Operating free air temperature range | -40°C to 85°C  |
| Storage temperature range            | -40°C to 125°C |

### SOLDERING INFORMATION<sup>2</sup>

|                         |                |
|-------------------------|----------------|
| Peak reflow temperature | 245°C          |
| Pin finish              | Hot dipped tin |

Specifications typical at T<sub>a</sub> = 25°C

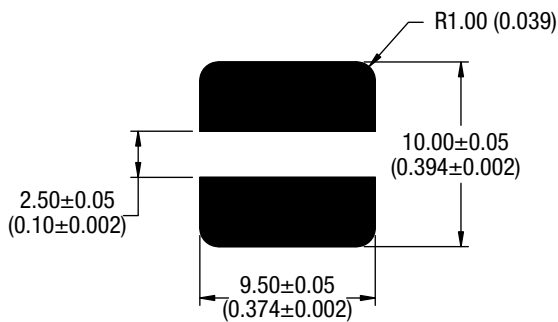
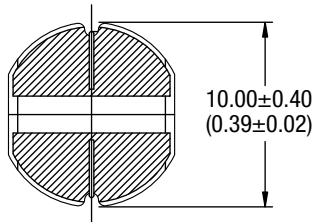
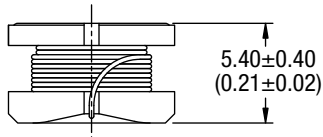
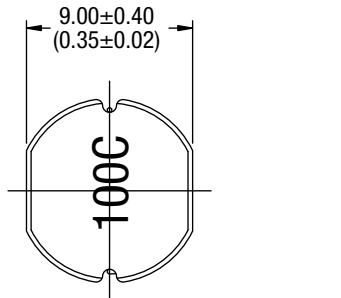
- 1 The maximum DC current is the value at which the inductance falls to 80% of its nominal value or when its temperature rise reaches 40°C, whichever is sooner.
- 2 For further information, please visit [www.murata-ps.com/rohs](http://www.murata-ps.com/rohs)

Technical enquiries - email: [mk@murata-ps.com](mailto:mk@murata-ps.com), tel: +44 (0)1908 615232



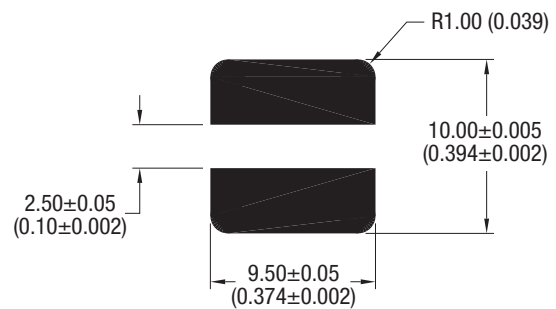
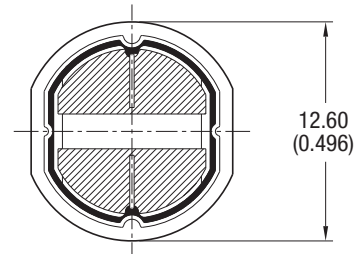
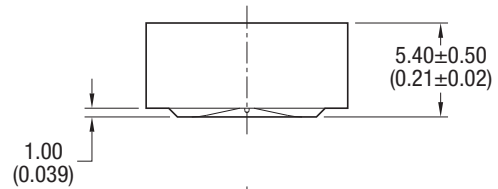
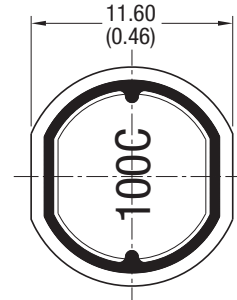
**MECHANICAL DIMENSIONS**

**UNSHIELDED TYPES**



Unless otherwise stated all dimensions in mm (inches) ±0.25 (0.01). Package Weight 1.54g Typ.

**SHIELDED TYPES**

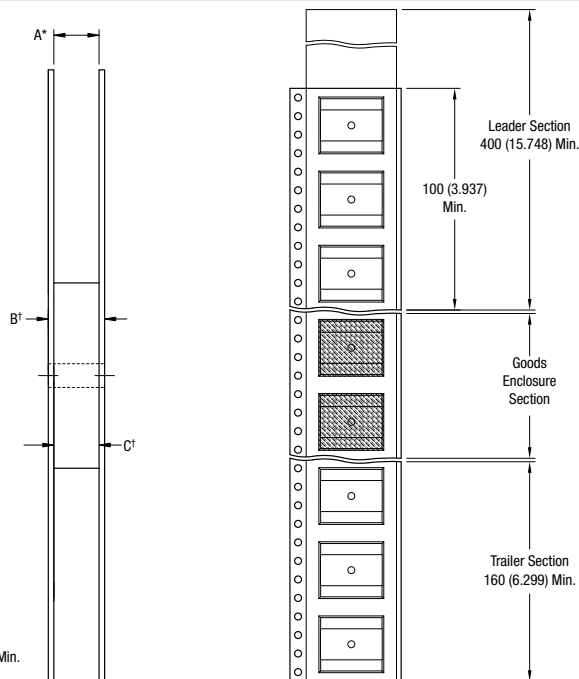
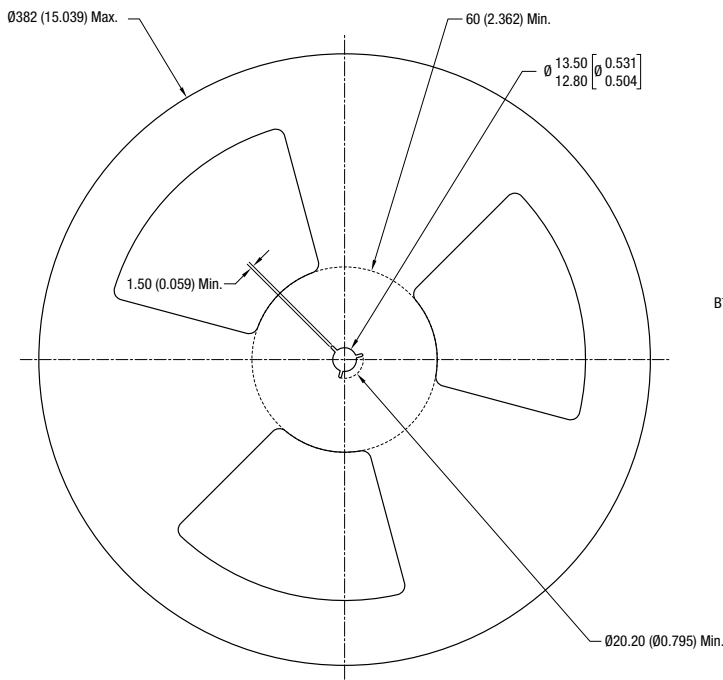


Unless otherwise stated all dimensions in mm (inches) ±0.25 (0.01). Package Weight 2.34g Typ.



**TAPE & REEL SPECIFICATIONS**

**REEL OUTLINE DIMENSIONS**



All dimension in mm [inches]  
 \* Includes flange distortion at outer edge  
 † Measured at hub

|                  | A                     | B (Max.)     | C                     |
|------------------|-----------------------|--------------|-----------------------|
| Unshielded Types | 23.9-27.4 (0.94-1.08) | 30.4 (1.197) | 24.4-26.4 (0.96-1.04) |
| Shielded Types   | 23.9-27.4 (0.94-1.08) | 30.4 (1.197) | 24.4-26.4 (0.96-1.04) |