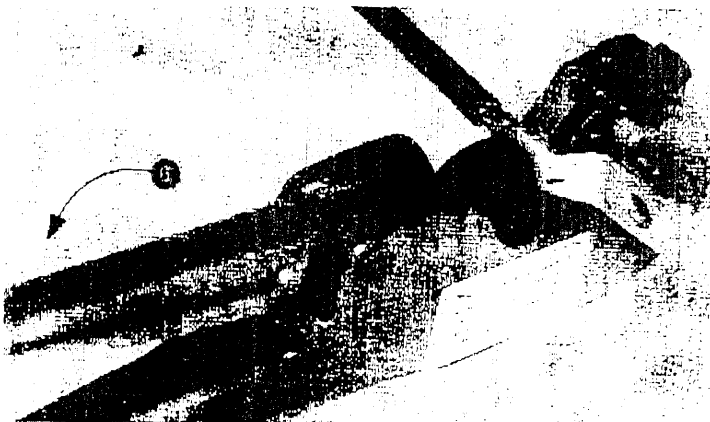
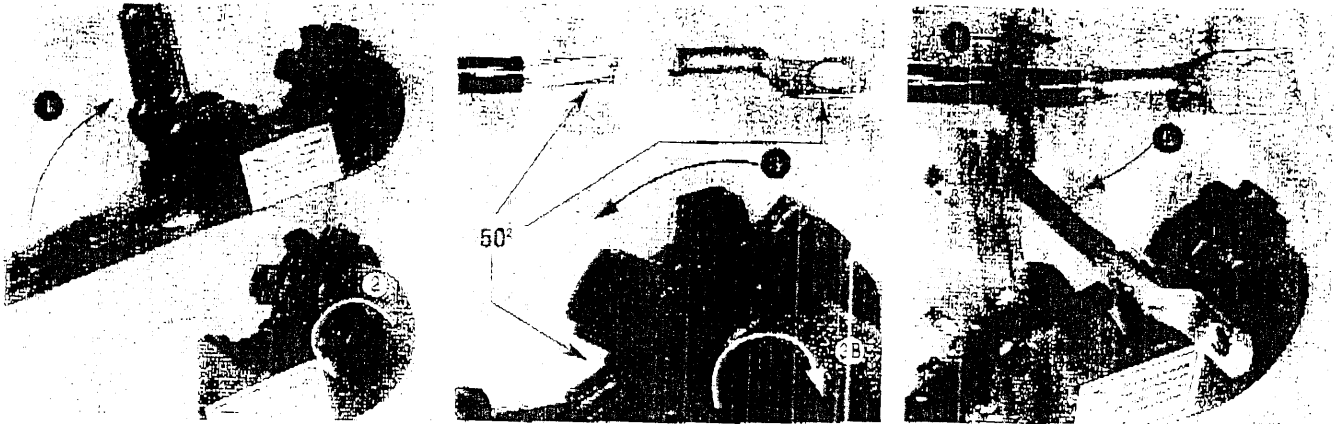


Equipment and tooling

Notice 1242417

Created 02/98

UNILEC : Mechanical handtool with built-in dies



In case of errors during crimping :
unlock the Unilec.



查询"708777-4"供应商

AMP**SIMEL**

Equipment and tooling

Notice 1242417

Created 02/98

UNILEC AMPOWER III : Mechanical handtool with built in dies**FUNCTION**

Crimps :

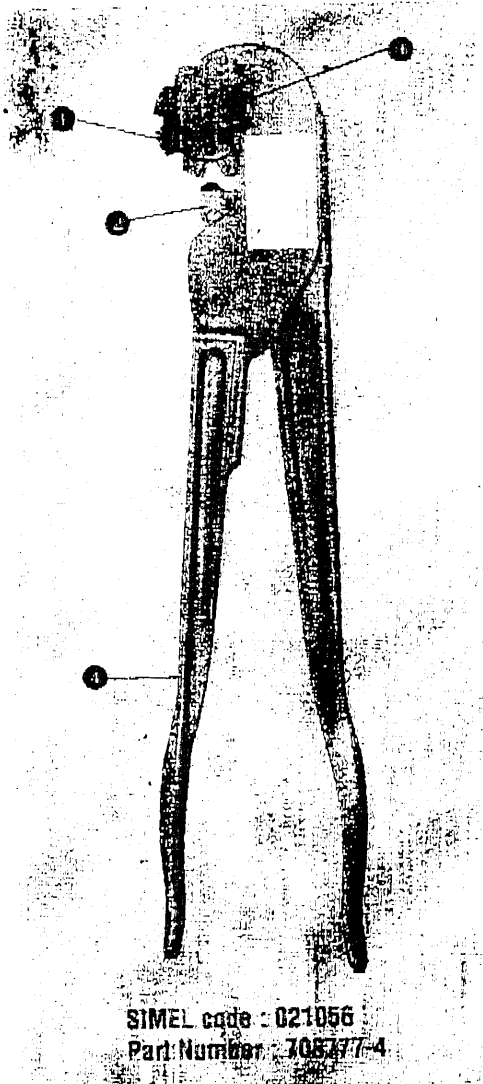
- Ampower III terminals and splices.
- 10 to 70 mm² rigid cable.
- 10 to 50 mm² flexible cable.

DESCRIPTION

Ruggedly built, this tool has proven over the years that it is reliable and easy to use.

It is equipped with :

- a recess turret **1** for crimping various barrel diameters ;
- a single punch **2** ;
- a button **3** to select the groove to be used ;
- a moving arm **4** ;
- a non-return system ensures high quality crimping.



SIMEL code : 021056
Part Number : 708777-4

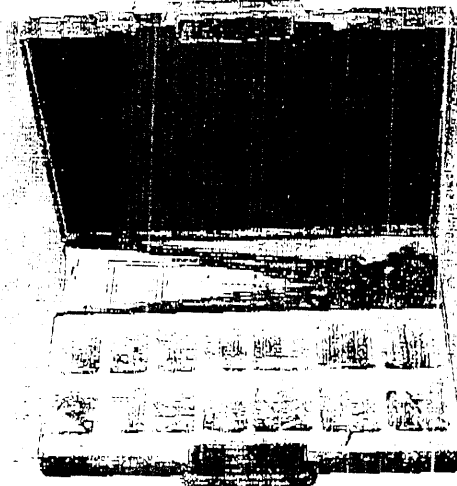


Tool weight : 2.5 kg.

L x W : 420 x 85 mm.

Packaged individually or in a case (option).

AMP-SIMEL provides after-sales service.

**UNILEC kit**

This small plastic case provides an easy way of carrying and protecting the UNILEC tool.

It has various compartments for storing the most widely used connectors.

Weight : 2.150 kg.

L x W x H :

450 x 300 x 90 mm.

SIMEL code :

Part Number :

} Consult us.