

查询“CS1213AGF260”供应商

SPECIFICATIONS

Electrical Ratings	50mA @ 50VDC
Electrical Life	200,000 cycles typical
Contact Resistance	< 50 mΩ initial
Actuation Force	160 +/- 50gF 260 +/- 50gF
Actuator Travel	.15 +/- .05mm
Dielectric Strength	250Vrms min
Insulation Resistance	> 100MΩ min
Operating Temperature	-40°C to 85°C
Storage Temperature	-40°C to 85°C



MATERIALS ←RoHS COMPLIANT

Actuator	4/6 Nylon
Housing	4/6 Nylon
Cover	Stainless Steel
Contacts	Stainless Steel, Silver Plated
Terminals	Brass, Silver Plated

ORDERING INFORMATION

1. Series:	CS1213	A	J	F160
CS1213				
2. Locating Boss Option:				
A = Without Boss				
B = With Boss				
3. Terminal Option:				
G = Gull Wing				
J = J Lead				
L = 4 terminal Gull Wing				
LE = 4 terminal Gull Wing, with earth ground **Not available with boss				
4. Actuation Force:				
F160 = 160gF				
F260 = 260gF				

DIMENSIONS

SCHEMATIC & PC LAYOUTS

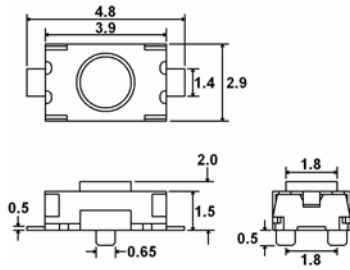
CS1213AG

CS1213AJ

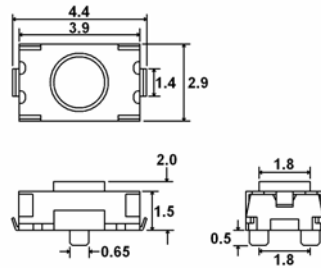


DIMENSIONS

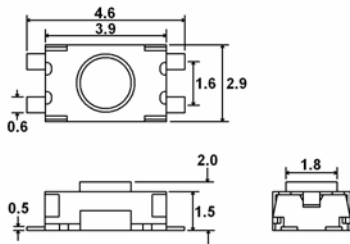
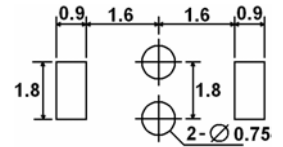
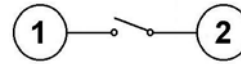
SCHEMATIC & PC LAYOUTS



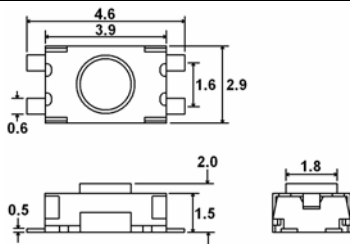
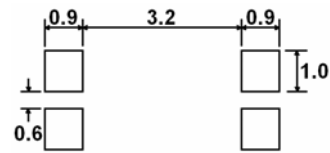
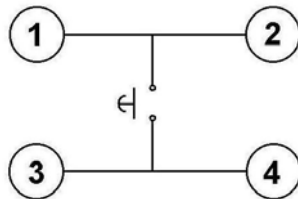
CS1213BG



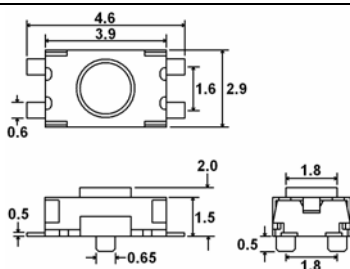
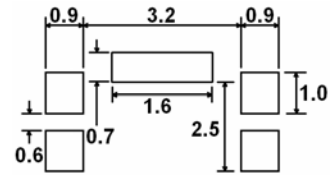
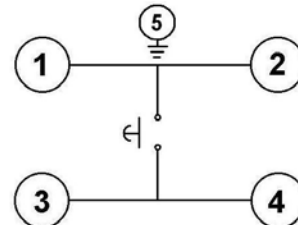
CS1213BJ



CS1213AL



CS1213ALE



CS1213BL

