

KR Series 2389 Bandpass Filters

General Description

KR 2389 is an elliptic type bandpass filters supplied in a pcb mountable case. Connectorized versions are available on request. Other center frequencies and bandwidths can be designed. Consult the factory for other options.

Features

- Elliptic bandpass filter
- PCB mount package
- Center frequency 70 MHz
- 1 dB Bandwidth > 8 MHz

Typical Performance

Passband Response & Group Delay
(1 dB/div & 20 nsec/div)

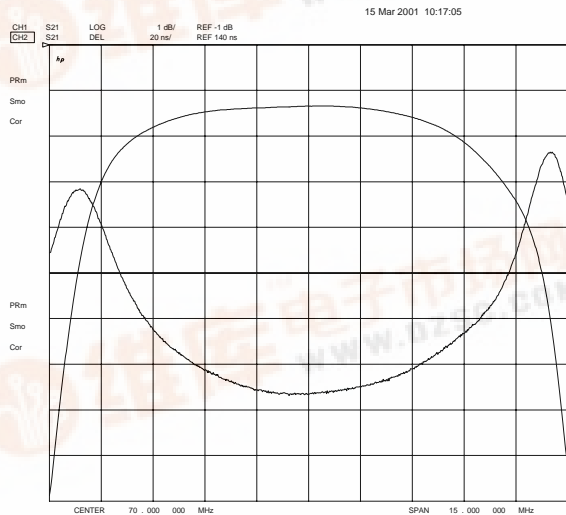


Figure 1

Overall Response
(10 dB/div) 20 MHz to 120 MHz

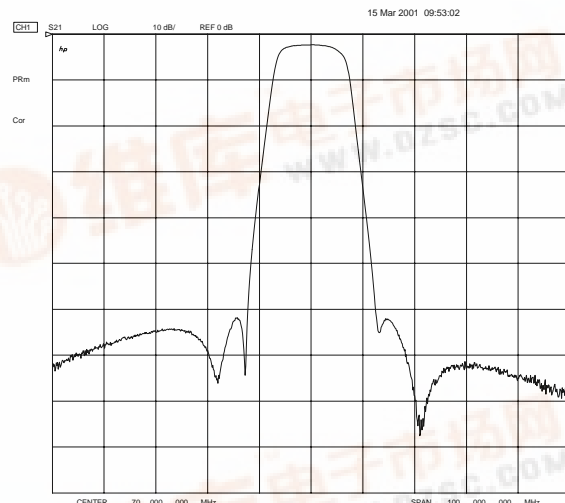


Figure 2

KR Electronics, Inc.
91 Avenel Street
Avenel, NJ 07001

Web www.krfilters.com
Email sales@krfilters.com
Phone (732) 636-1900
Fax (732) 636-1982

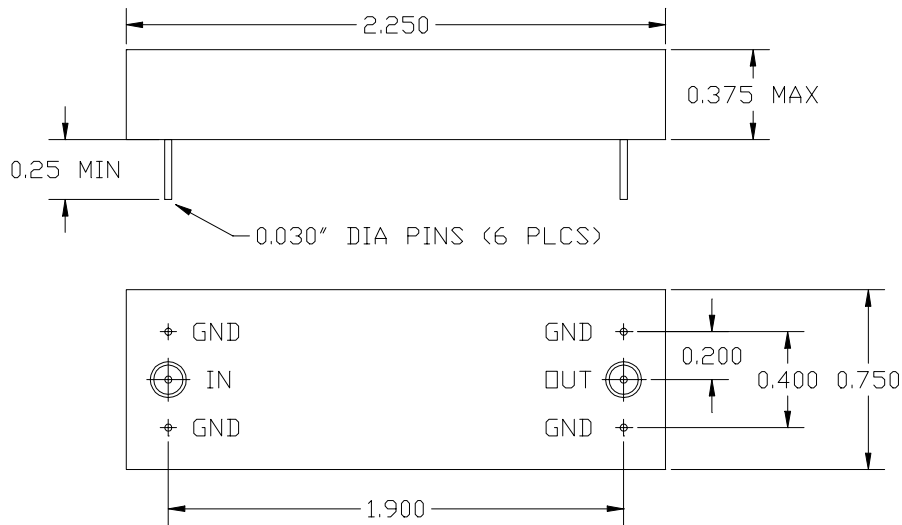


KR 2389 Bandpass Filter

Specifications

Parameter	Specification	
Filter type	Bandpass	
Center Frequency (fc)	70 MHz	Consult factory for other
1 dB Bandwidth (BW _{1dB})	> 8 MHz	Consult factory for other
55 dB Bandwidth (BW _{55dB})	< 26 MHz	
Impedance	50 Ω	Consult factory for other

Physical Dimensions



Dimensions in inches
Metal Case