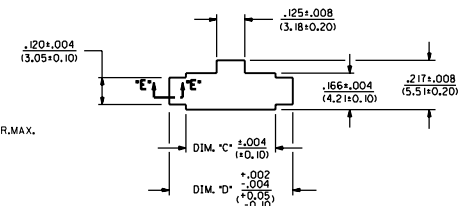
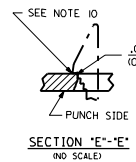
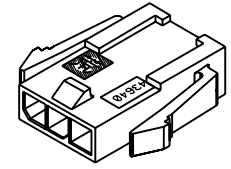


ASSEMBLY ITEM NUMBER	PART CHARACTERISTICS NUMBER OF POSITION
43640-0200	02
43640-0300	03
43640-0400	04
43640-0500	05
43640-0600	06
43640-0700	07
43640-0800	08
43640-0900	09
43640-1000	10
43640-1100	11
43640-1200	12

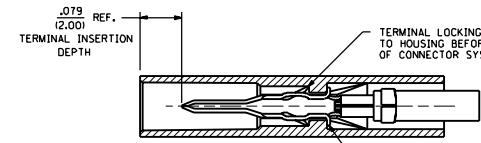
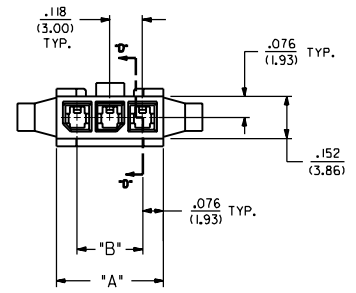
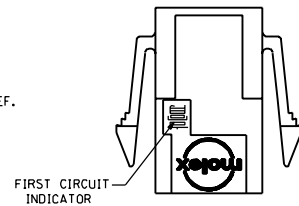
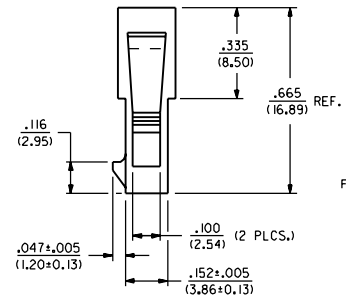
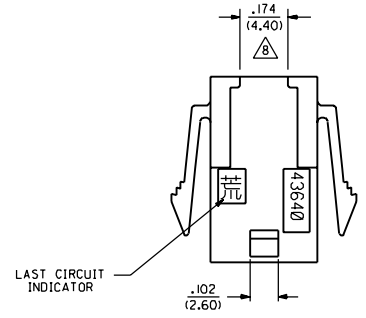
CKT. NO.	DIM. "A"	DIM. "B"	DIM. "C"	DIM. "D"
2	.270/(6.85)	.118/(3.00)	.284/(7.21)	.429/(10.90)
3	.388/(9.85)	.236/(6.00)	.402/(10.21)	.547/(13.89)
4	.506/(12.85)	.354/(9.00)	.520/(13.21)	.665/(16.89)
5	.624/(15.85)	.472/(12.00)	.638/(16.21)	.783/(19.89)
6	.742/(18.85)	.591/(15.00)	.756/(19.21)	.901/(22.89)
7	.860/(21.85)	.709/(18.00)	.874/(22.21)	1.019/(25.88)
8	.978/(24.85)	.827/(21.00)	.992/(25.21)	1.137/(28.88)
9	1.096/(27.85)	.945/(24.00)	1.110/(28.21)	1.255/(31.88)
10	1.215/(30.85)	1.063/(27.00)	1.229/(31.22)	1.373/(34.87)
11	1.333/(33.85)	1.181/(30.00)	1.347/(34.22)	1.491/(37.87)
12	1.451/(36.85)	1.299/(33.00)	1.465/(37.22)	1.609/(40.87)



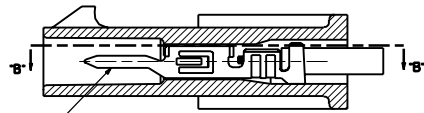
- NOTES:**
- HOUSING MATERIAL: UNFILLED POLYESTER, RATED U.L. 94V-0, COLOR IS BLACK.
 - THIS HOUSING MATES WITH MICRO-FIT RECEPTACLE *43645-*****.
 - THIS HOUSING IS DESIGNED IN METRIC.
 - THIS HOUSING TO BE USED WITH MOLEX MALE TERMINAL *43031-*****.
 - PLUG DESIGNED FOR .062/(1.57) TO .090/(2.3) THICK STAMPED PANEL OR P.C.BOARD.
 - SEE SECTION "D"- "D" FOR TERMINAL ORIENTATION IN HOUSING.
 - ALL CONNECTORS MUST MEET THE PERFORMANCE REQUIREMENTS OF MOLEX PRODUCT SPECIFICATION *PS-43650.
 - THIS DIMENSION APPLIES TO PLUG CKT. SIZES 3 THRU 12 ONLY.
 - SEE SHEET 2 FOR PLUG WITHOUT PANEL MOUNTS.
 - PANEL MOUNT FEATURES MUST LOCK ON SIDE OPPOSITE PUNCH SIDE FOR OPTIMUM RETENTION.



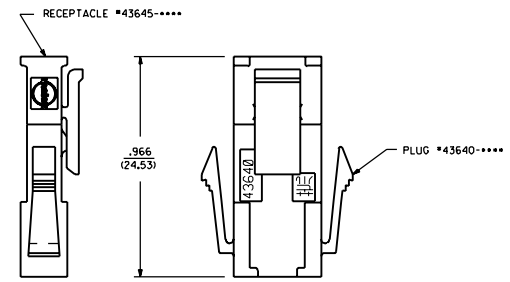
PLUG WITH PANEL MOUNTS ISO VIEW



SECTION "B"- "B" (SCALE: 8X)



SECTION "D"- "D" WITH TERMINAL (SCALE: 8X)



MATED MICRO-FIT CONNECTOR

D4	REVISED PER EON 98-084
D3	REVISED PER EON #41-1945
D2	REVISED PER EON #41-0171
D1	REVISED PER EON #41-0560
D	REVISED PER EON #41-082
C	REVISED PER EON #41-0027
B	REVISED PER EON #48-174
A	FINAL RELEASE EON #48-1949
2	ADDED SHEET 2 EON #48-1949
1	RELEASE EON #48-0601
D2	REVISED PER EON #48-1949
D3	REVISED PER EON #48-1949

CONNECTIONS SHOWN METRIC (INCH) ± 0 ± 0 ± 0 **REVISE ONLY ON CAD SYSTEM**

TITLE: MICRO-FIT (3.0) IN-LINE 2 THRU 12 CIRCUIT PLUG WITH PANEL MOUNTS

DATE: 10/14/98

SCALE: 1:1

MOLEX INCORPORATED

SEE CHART SD-43640-*****

DATE: 10/14/98

BY: AFG

CHK: BAF

APP: PLF

REV: 4.1

FOR ASSEMBLY CONSULTING INFORMATION VISIT US AT WWW.MOLEX.COM

MOLEX INCORPORATED

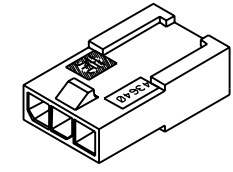
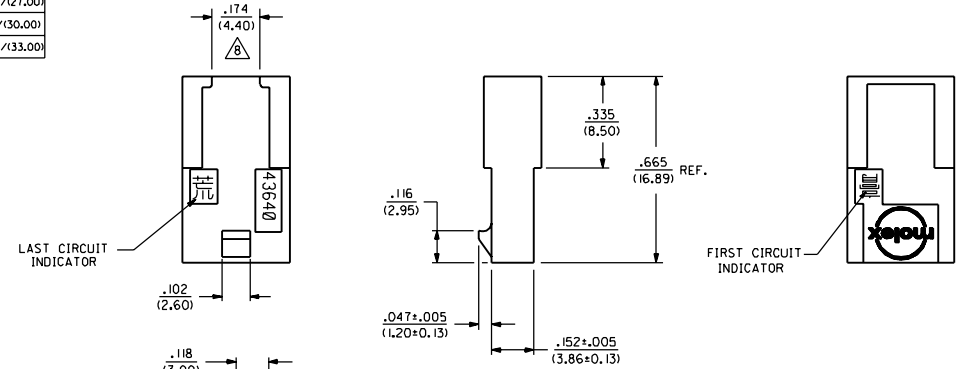
1000 S. GARDEN AVENUE, P.O. BOX 128, MOLEX CITY, IL 61850

ASSEMBLY ITEM NUMBER	PART CHARACTERISTICS NUMBER OF POSITION
43640-020	02
43640-030	03
43640-040	04
43640-050	05
43640-060	06
X 43640-070	07
X 43640-080	08
X 43640-090	09
X 43640-100	10
X 43640-110	11
X 43640-120	12

CKT. NO.	DIM. "A"	DIM. "B"
2	.270/(6.85)	.118/(3.00)
3	.388/(9.85)	.236/(6.00)
4	.506/(12.85)	.354/(9.00)
5	.624/(15.85)	.472/(12.00)
6	.742/(18.85)	.591/(15.00)
7	.860/(21.85)	.709/(18.00)
8	.978/(24.85)	.827/(21.00)
9	1.096/(27.85)	.945/(24.00)
10	1.215/(30.85)	1.063/(27.00)
11	1.333/(33.85)	1.181/(30.00)
12	1.451/(36.85)	1.299/(33.00)

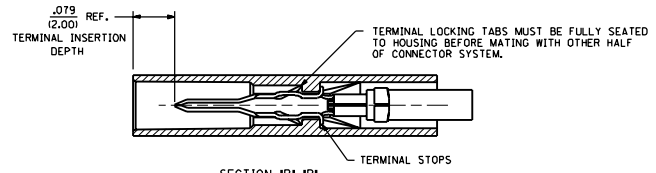
NOTES:

- HOUSING MATERIAL: UNFILLED POLYESTER, RATED U.L. 94V-0. COLOR IS BLACK.
- THIS HOUSING MATES WITH MICRO-FIT RECEPTACLE *43645-****.
- THIS HOUSING IS DESIGNED IN METRIC.
- THIS HOUSING TO BE USED WITH MOLEX MALE TERMINAL *43031-****.
- PLUG HAS BEEN DESIGNED FOR .062/(1.57) TO .090/(2.3) THICK P.C. BOARDS.
- SEE SECTION "D"-D' FOR TERMINAL ORIENTATION IN HOUSING.
- ALL CONNECTORS MUST MEET THE PERFORMANCE REQUIREMENTS OF MOLEX PRODUCT SPECIFICATION *PS-43650.
- THIS DIMENSION APPLIES TO PLUG CKT. SIZES 3 THRU 12 ONLY.
- SEE SHEET 1 FOR PLUG WITH PANEL MOUNTS.

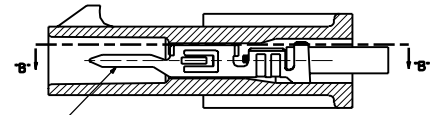


**PLUG WITHOUT PANEL MOUNTS
ISO VIEW**

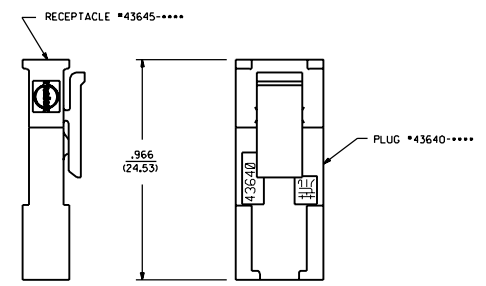
TERMINAL LOCKING TABS MUST BE FULLY SEATED TO HOUSING BEFORE MATING WITH OTHER HALF OF CONNECTOR SYSTEM.



**SECTION "B"-B"
SCALE: 8X1**



**SECTION "D"-D"
WITH TERMINAL
SCALE: 8X1**



MATED MICRO-FIT CONNECTOR

REVISIONS	REV. 1	DATE	1/19
REV. 2	DATE		
REV. 3	DATE		
REV. 4	DATE		
REV. 5	DATE		
REV. 6	DATE		
REV. 7	DATE		
REV. 8	DATE		
REV. 9	DATE		
REV. 10	DATE		
REV. 11	DATE		
REV. 12	DATE		
REV. 13	DATE		
REV. 14	DATE		
REV. 15	DATE		
REV. 16	DATE		
REV. 17	DATE		
REV. 18	DATE		
REV. 19	DATE		
REV. 20	DATE		

MOLEX INCORPORATED
SEE CHART SD-43640-****
SCALE: 4:1